

UNIVERSITY OF LOUISVILLE®

PROCUREMENT SERVICES ADDENDUM

Date of Notice:	2/21/2025
Solicitation No.:	IB-014-25
Title:	Steam Plant Surplus Equipment For Sale
Addendum No.:	1

The following pages shall clarify and/or modify the original bid document(s) as issued by the University of Louisville.

The due date has been extended to 3/11/2025 at 12:00PM, EST.

Proposer must acknowledge receipt of this and any addenda either with proposal or by separate letter. Acknowledgement must be received in the Department of Procurement Services, Service Complex Building, University of Louisville no later than **3/11/2025 at 12:00PM, EST**. If by separate letter, the following information must be placed in the lower left-hand corner of the envelope:

Solicitation No.:	IB-014-25
Title:	Steam Plant Surplus Equipment For Sale
Due Date:	3/11/2025 at 12:00PM, EST.

Authorized By:

Procurement Services	
----------------------	--

Receipt Acknowledged:

Company	
Signature	
Name (print)	
Date	



2215 S. BROOK STREET
LOUISVILLE, KENTUCKY 40208

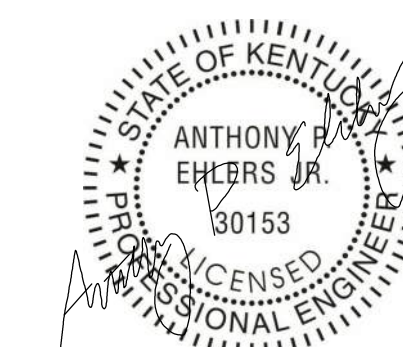
HAFER
architects • designers • engineers
101 E Second Street,
Suite 101
Owensboro, KY 42303
T: 270.926.1331
F: 270.684.4455
www.hafersdesign.com



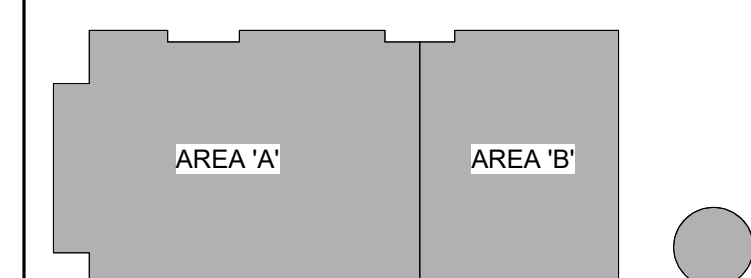
12700 PLANTSIDE DR.
LOUISVILLE, KY 40299
PH. (502) 499-7000



101 NORTH 7TH STREET
LOUISVILLE, KY 40202
PH. (502) 589-2212
WWW.RAIENGINEERING.COM



BID SET



KEY PLAN

#	Description	Date

Designed By: AE Drawn By: AE Checked By: AE

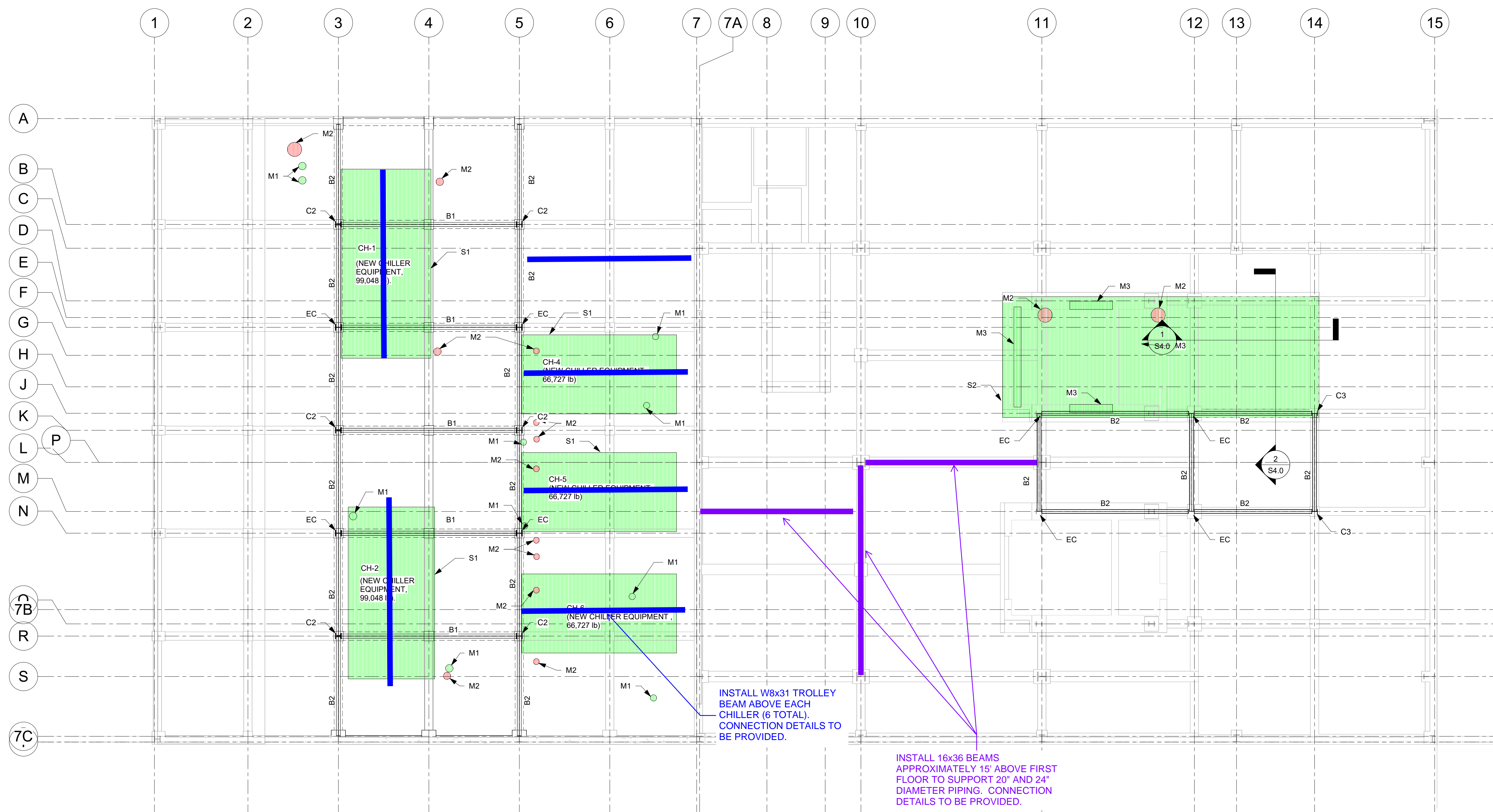
The drawings, specifications and other documents, including those in electronic form prepared by Hafer for this project are instruments of Service, and may be used solely with respect to this project. The documents may not be reproduced or modified by a third party without first obtaining the express written consent of Hafer. Authorized use of electronic media or file does not guarantee that these files contain complete and accurate information. In order to insure the accuracy of the information contained and that no changes or modifications have been made, these files must be compared to the project's contract documents with stamped and sealed certification and applicable approved modifications.

Sheet title:

FIRST FLOOR FRAMING PLAN

RAI Project No: 2024033 Date: January 27, 2025

Drawing No: **S2.0**



1 FIRST FLOOR FRAMING PLAN
S2.0 1/8" = 1'-0"

NOTE:
THE FIRST FLOOR SHALL BE COVERED WITH 1" (MIN.) THICK STEEL ROAD PLATES DURING THE REMOVAL AND INSTALLATION OF CHILLERS.

SHORING IN THE BASEMENT IS NOT EXPECTED. HOWEVER, PLEASE PROVIDE STRUCTURAL ENGINEER WITH CHILLER REMOVAL/INSTALLATION METHOD SO THAT WE CAN VERIFY THE ROLLER POINT LOADS ARE ACCEPTABLE.

PLAN NOTES

- M1 = INFILL EXISTING HOLES IN SLAB, REF. DETAIL 1/S3.0
- M2 = INFILL PIPE PENETRATION HOLES, REF. DETAIL 1/S3.0
- M3 = INFILL EXISTING HOLES IN SLAB AND WALL, REF. DETAIL 1/S3.0
- S1 = 6" THICK CONCRETE EQUIPMENT PAD REF. DETAIL 4/S3.0
- S2 = 12" THICK CONCRETE EQUIPMENT PAD W/ #6 @ 6" O.C., E.W., E.F. REF. DETAIL 4/S3.0

FRAMING LEGEND

- C2 = W10X49 STEEL COLUMN, BASE PLATE : BP1 - REF. 9/S5.0
- C3 = W10X33 STEEL COLUMN, BASE PLATE : BP1 - REF. 9/S5.0
- EC = EXISTING STEEL COLUMN
- B1 = W16X36 (T.O.S. EL. 20'-0")
- B2 = W12X26 (T.O.S. EL. 12'-0")

NOTES:

1. CONTRACTOR TO VERIFY ALL EXISTING DIMENSIONS & FRAMING MEMBER SIZES IN FIELD.
2. ALL EXISTING & NEW PIPE PENETRATIONS/OPENINGS, FLOOR DRAINS MAY NOT BE SHOWN. COORDINATE EXACT LOCATIONS AND QUANTITIES WITH THE PLUMBING & EQUIPMENT SUPPLIER DRAWINGS. PROVIDE POSITIVE SLOPES /WARPS TO THE FLOOR SLAB IN ORDER TO PROVIDE REQUIRED DRAINAGE.