

Course Description

This course will focus on the non-motor aspects of Parkinson's disease. While motor aspects are being better controlled pharmacologically and with deep brain stimulation, cognitive, psychiatric, autonomic aspects are quite challenging to diagnose and treat. Experts in the field will discuss each of the aspects and current management approaches.

Target Audience

This course is designed for neurologists, physicians, physician assistants and other health professionals serving in the neurology practice setting.

Continuing Education Credit

Physician Credit - University of Louisville Continuing Health Sciences Education designates this educational activity for a maximum of 3.75 *AMA PRA Category 1 Credits*TM. Physicians should only claim credit commensurate with the extent of their participation in the activity.

Nursing Credit - This program has been approved by the Kentucky Board of Nursing for 4.5 contact hours provider number 3-0046-01-2013-104 through the University of Louisville School of Nursing, expiration date January 31, 2013. The Kentucky Board of Nursing approval of an individual nursing education provider does not constitute endorsement of program content. Participants must attend entire session, provide license and SS#, and complete evaluation to receive contact hours.

AAFP Credit - Application for AAFP credit has been filed with the American Academy of Family Physicians. **Determination of credit is pending.**

Special Services

To request disability arrangements, contact Continuing Health Sciences Education at chse@louisville.edu at least 10 days prior to the conference. Continuing Health Sciences Education fully complies with the legal requirements of the ADA and the rules and regulations thereof.

Agenda

7:30 AM	Registration & Continental Breakfast
8:00 AM	Premotor Features of Parkinson's Disease Irene Litvan, M.D.
8:25 AM	Non-Motor Fluctuations David Houghton, MD
8:50 AM	Cognitive Aspects Kate Voorhees, Psy.D
9:15 AM	Autonomic Problems Jay Ferrara, MD
9:40 AM	Anxiety and Depression in Parkinson's Disease David Moore, M.D.
10:05 AM	15-minute break
10:20 AM	Gait Problems and Falls Kathy Paper, PT
10:45 AM	Speech Problems Katie Flerlage, MS, CCC-SLP
11:10 AM	Quality of Life Colleen Knoop, ARNP Marie Schneider, OT Diane Stretz-Thurmond, M.ED
11:40 AM	New Clinical Trials Annette Robinson, RN

Accreditation

The University of Louisville School of Medicine is accredited by the Accreditation Council for Continuing Medical Education (ACCME) to provide continuing medical education for physicians.

First Symposium on the Non-Motor Aspects of Parkinson's Disease

REGISTRATION FORM

THIS IS A FREE PROGRAM, BUT ADVANCE REGISTRATION IS REQUIRED

Name _____

Address _____

City _____ State ____ Zip _____

Telephone _____

Email Address _____

Fax _____

License # _____

Last four digits of SS# (for cont. ed. credit) _____

M.D. Specialty _____

Nurse

Other (please specify) _____

Mail to: UofL HSC Cont. Ed./511 S. Floyd MDR Bldg., Rm. 111/Louisville, KY 40202

Or **fax** form to (502) 852-6300

Or **call** (502) 852-5329

Or **register online** at

<http://tinyurl.com/mj2o9j>

Faculty

Jay Ferrara, M.D.

University of Louisville Neurology
Division of Movement Disorders
Louisville, Kentucky

David Houghton, M.D., MPH

University of Louisville Neurology
Division of Movement Disorders
Louisville, Kentucky

David Moore, MD

Gratis Faculty
University of Louisville
School of Medicine
Louisville, Kentucky

Colleen Knoop, MSN, ARNP, FNP, NP-C

University of Louisville Neurology
Louisville, Kentucky

Katie Flerlage, M.S., CCC-SLP

Frazier Rehab and Neuroscience Institute
Louisville, Kentucky

Kathryn Voorhees, Psy.D.

Frazier Rehab and Neuroscience Institute
Louisville, Kentucky

Diane Stretz-Thurmond, MED, CRC, CBIS

Frazier Rehab and Neuroscience Institute
Louisville, Kentucky

Kathy Paper, PT

Frazier Rehab and Neuroscience Institute
Louisville, Kentucky

Marie Schneider, OT

Frazier Rehab and Neuroscience Institute
Louisville, Kentucky

Annette Robinson, RN

University of Louisville Neurology
Division of Movement Disorders
Louisville, Kentucky

Course Director

Irene Litvan, M.D.

Course Director
University of Louisville Neurology
Raymond Lee Leiby Professor of Neurology
Director, Division of Movement Disorders
Louisville, Kentucky

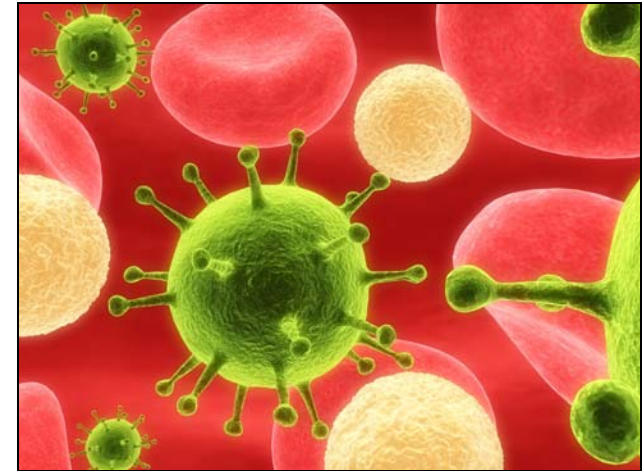
Objectives

- Identify the scope of autonomic symptoms seen in idiopathic Parkinson's disease, including urinary bladder dysfunction, orthostatic hypotension, constipation and excessive sweating.
- Recognize which autonomic symptoms are impacted (for better or worse) by dopaminergic drugs, such as carbidopa-levodopa, and which symptoms are unaffected.
- Manage common autonomic symptoms with pharmacotherapies.
- Recognize cognitive aspects of Parkinson's disease.
- Identify three common characteristics of the typical Parkinson's disease gait pattern.
- Describe two common strategies used to help decrease freezing episodes.
- Demonstrate two fall prevention techniques that can be used in the home.
- Identify the premotor features of Parkinson's disease.
- Evaluate which features may better predict Parkinson's disease.

First Symposium on the Non-Motor Aspects of Parkinson's Disease

Monday, December 7, 2009

Rudd Heart & Lung Center
201 Abraham Flexner Way
Conference Center
Louisville, Kentucky



Register Online At:
<http://tinyurl.com/mj2o9j>

