

Community in Crisis Events: *This Time It's Personal!*

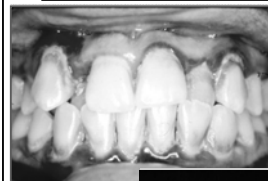
Nicholas G. Mosca, DDS
State Dental Director,
Mississippi Department of Health;
Clinical Professor, Pediatric and Public Health Dentistry,
University of Mississippi School of Dentistry

Learning Objectives

- 1) Discuss why oral health matters in state and community crisis planning, response and recovery.
- 2) Identify ways to mitigate prolonged recovery of oral health care systems in crisis events.
- 3) Describe goals and objectives to improve the accessibility and availability of oral health care in crisis response and recovery.

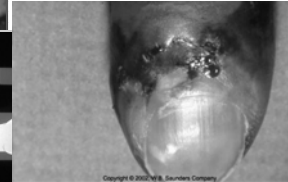
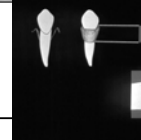


Magnitude of the Oral Infection



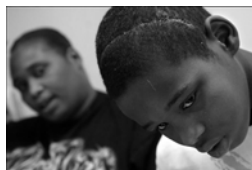
Surface area of infected periodontal pockets can approach size of palm of hand.

In a pregnant or diabetic patient this size skin lesion would be treated aggressively.



Consequences of Untreated Oral Disease

- Pain & swelling
- Impaired chewing & nutrition
- ER visits, hospitalizations, surgeries
- Lost productivity
 - 52 million school hours lost/yr.
 - 164 million work hours lost/yr.
- Systemic health complications



12-year-old Deamonte Driver (courtesy Washington Post)

Systemic Complications from Oral Infections



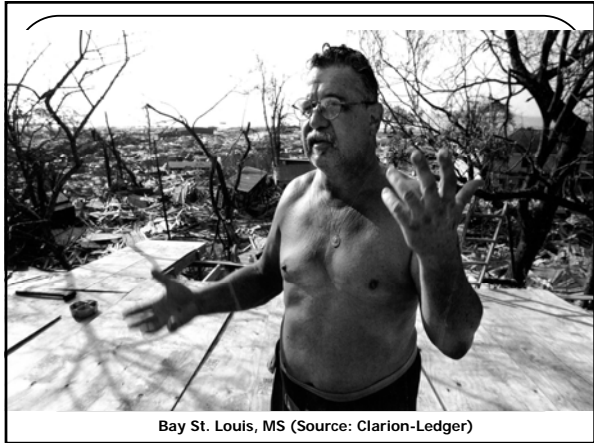
- Cardiovascular and cerebrovascular diseases
- Diabetes complications
- Respiratory infections
- Septicemia and shock

Disaster Preparedness

- What happens if we lose the oral health care infrastructure?
- How will damaged dental offices contribute to any environmental hazards?

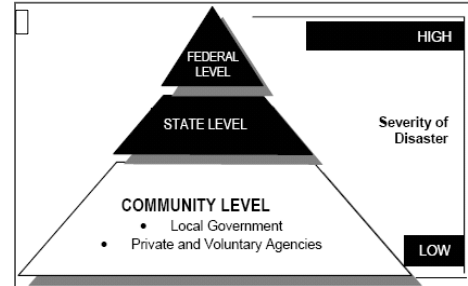


Is Access to Oral Health Care Important to Your Community?



Bay St. Louis, MS (Source: Clarion-Ledger)

"Unfortunately, some communities learn how to prepare for a disaster and reduce its effects only after experiencing one."



Key Steps in Mitigation

- Anticipate risks to life and property
- Reduce or eliminate risk from hazards
- Develop a personal mitigation plan for you and your practice (business)
 - What will you do to protect your patients?
 - Plan a local community response

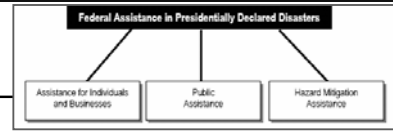


Anticipate and Plan Ahead

- Loss of **home (displacement)**
 - Consider mitigation factors such as flood maps when building a home or office
- Loss of **office, equipment and patients**
- Loss of **staff**
- **Other consequences of devastation**

Key Events:
Disaster Declaration

- Governor activates the state's *Emergency Operation Command (EOC)* and *Emergency Operations Plan*, and declares a *state emergency or disaster*.
- A preliminary damage assessment (PDA) of impact and magnitude of damage incurred is prepared.



- **State Response Plan** establishes **Priorities**
 - Ensure public order and security
 - Assure vital services
 - Clean water, shelter, food
 - Communications, gas
 - Medical care, search and rescue
 - **Urgent oral health care???**
 - Debris removal, transportation
 - Assess extent and severity of damage
 - Prevent spread of disease

Federal Response - Historical Role

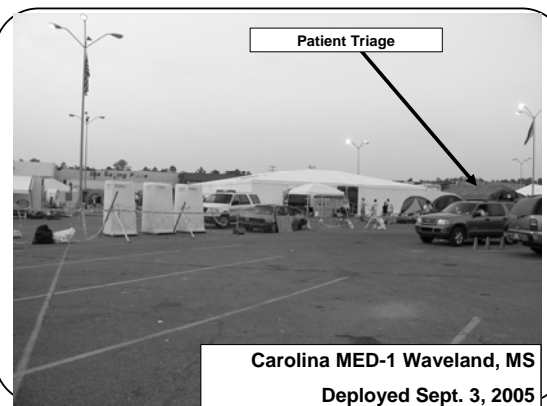
- In **1988**, Congress enacted the Robert T. **Stafford** Disaster Relief and Emergency Assistance **Act**
- Disaster relief funded by cost sharing
 - 75% Federal and 25% non-Federal
- Gives the Federal government authority to provide assistance in a major disaster

Emergency Support Function (ESF)

- One of 12 areas in which the federal government is organized to provide support to state and local responders in a disaster.
- Each ESF is assigned to a primary agency.
- **ESF-8** is Health and Medical

ESF-8

- **Stafford Act** allows Department of Health and Human Services to provide assistance to carry out emergency health and sanitation measures during disaster
- **SERT** - Secretary's Emergency Response Team is deployed
- Stafford Act allows FEMA to "**task**" the agency for these activities





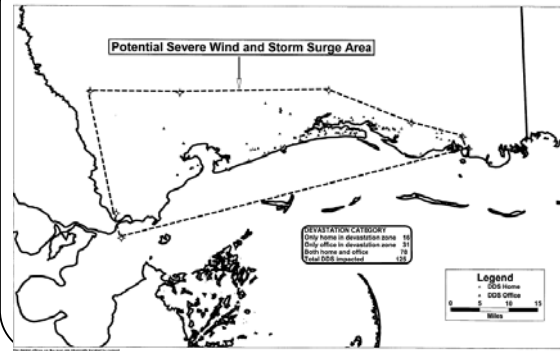
“Missing in Action”

- Oral Health - Dentistry
- Vision - Ophthalmology / Optometry
- “Grief Relief” – Mental Health
- Were these needs **under-valued, under-funded, or under-reported?**

State Dental Director’s Role

- “What can I do to help?” Coordinate Volunteers
- Develop **situation report** that describes the victim’s needs
- Prepare the **local (action) request** for assistance
- Communicate request to EOC & SERT

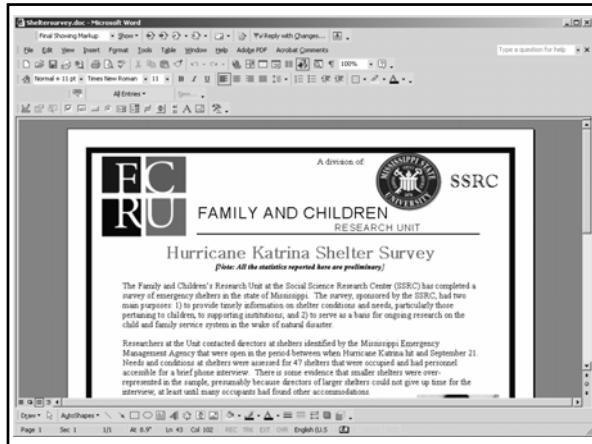
Location of Dentist Homes and Offices in Gulf Coast Areas with Potentially Severe Wind and Storm Surge Affects



Coastal Dentist Status Report - 12/08/2005 - IQH Ridgeland MS 601-957-1575						
Hancock County						
Last Name	First Name	Address	City	Phone	Status	
AKIN	RICHARD	1013 HWY 90	BAY ST LOUIS	228-467-4229	Closed - Destroyed will rebuild	
CONWAY JR	FRANK	202 HANCOCK SQUARE	BAY ST LOUIS	228-467-4070	Closed - Destroyed will rebuild	
CRITTENDEN	DAVID	1001 BENOING LANE	BAY ST LOUIS	228-255-5430	No Contact	
FRIGO	CHRISTOPHER	503 ULAMA AVENUE	BAY ST LOUIS	228-896-6071	Closed - Destroyed will rebuild	
NETDMANN	SCOTT	0457 COAST ORAL AND FACIAL SURG	BAY ST LOUIS	228-389-9505	Closed - Destroyed will not rebuild	
JONES	DANA	110 AUDERER BOULEVARD	WAVELAND	228-467-8440	Closed - Will open date unknown	
JONES	DANA	1704 HIGHWAY 603	XULN	228-467-6440	Open - Fully Operational	
KEEL JR	M	304 NORTH SECOND ST	BAY ST LOUIS	228-467-5677	Closed - Destroyed will rebuild	
LEDOUX	WILLIAM	1009 HIGHWAY 90	BAY ST LOUIS	228-467-5293	Open - Fully Operational	
MATHESON III	DUNCAN	5404 INDIAN HILL BOULEVARD	DIAMONDHEAD	228-255-2543	Closed - Will open date unknown	
MATHESON IV	DUNCAN	5404 INDIAN HILL BOULEVARD	DIAMONDHEAD	228-255-2543	Closed - Will open date unknown	
MURPHREE	MARTIN	110 AUDERER BOULEVARD	WAVELAND	228-467-8440	Closed - Will open date unknown	
MURPHREE	MARTIN	1704 HIGHWAY 603	XULN	228-467-6440	Open - Fully Operational	
MURPHREE JR	THOMAS	110 AUDERER BOULEVARD	WAVELAND	228-467-8440	Closed - Will open date unknown	
MURPHREE JR	THOMAS	1704 HIGHWAY 603	XULN	228-467-6440	Open - Fully Operational	
TUMNELLO	DAVID	700 DUNBAR AVENUE	BAY ST LOUIS	228-467-6044	Closed - Will open date unknown	

Oral Health Care Infrastructure Needs Assessment

- Estimated pre-disaster population in coastal counties - 369,000 people
- Pre-disaster assessment in 6 affected counties
 - 189 dentists
- Post-disaster assessment
 - 85 dentists with damaged offices
 - 45 dentists who lost their residence



Local and State Response

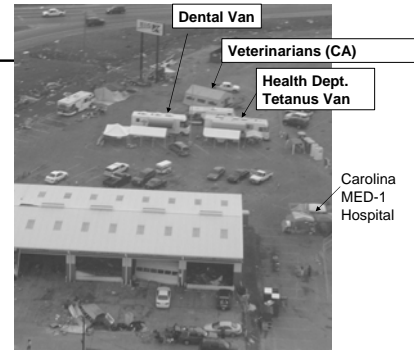
Implement temporary direct dental services

- Plan and position facilities
- Obtain equipment and supplies
- Recruit workforce - use volunteers
 - State licensure issues??
- Ensure workforce safety and security
- Plan accommodations and meals (logistics)
- Malpractice coverage and workman's compensation (requires Federalization!)

Emergency Management Assistance Compact (EMAC)

- A national disaster relief agreement among 48 states, District of Columbia, Puerto Rico, and the Virgin Islands
- Requires **declaration of emergency**
- Provides **assistance** across state lines for search and rescue, law enforcement, *even managing state oral health programs!*

Smile of Grace Mobile Dental Van
Dr. Mark and Beth Buckner, Alabama Deployed September 11, 2005



US Public Health Service





Tomorrow's Dental Office
Today
Deployed September 21, 2005

Nevada-1 Gulfport, MS



Two volunteer dental
vans and portable
equipment
Deployed September 21,
2005

Victim Dental Services

- Waveland, MS - 975 patients seen; 1077 encounters
- Gulfport, MS - 290 patients seen; 323 encounters
 - 73 children seen
 - 193 patients had high blood pressure
 - 83 patients had diabetes
 - 28 patients had liver disease
 - 15 patients had abnormal bleeding disorders
 - 7 patients had tuberculosis
 - 10 patients were pregnant
- Many others received counseling and supplies
- Oral health data was reported to the SERT



Important Values Learned

- Americans believe oral health services is routine health care.
- **COMMUNICATION** and participation in disaster preparedness planning and response is essential to motivate and facilitate support.
- **Be much better prepared** - assure a plan for to recover the **oral health care infrastructure** as part of your state's emergency response plan

Critical Objectives

- Participate in state response plan – volunteer!
- Improve strategic *positioning* and *integration* of dental USPHS officers
- **Cultivate** interprofessional partners (Mutual Aid Agreements)
- Engage in local community planning
 - Needs assessments (include oral health!)
 - Engage the local dental health providers

6 Months Later.....



Coastal Family
Dental Clinic
Biloxi, MS



AmeriCorp
Pass Christian, MS

6-Months After.....

Hurricane Recovery - Survey of Dentists

Total Respondents: 88

1. What is the status of your practice?



6. If closed and you plan to reopen, please indicate the timeframe:



Waveland, MS

Build "Preparedness" Leaders

- Review the operational plans for national, state, and local readiness and response.
- Understand the capabilities of dental workforce in planning and executing a crisis response.
- Utilize dental workforce in crisis events

Coordinate roles for dental workforce in disaster response:

- **Direct Care**
- Forensic odontology – Disaster Mortuary Operational Response Teams (**DMORT**)
 - Locate and retrieve anti-mortum dental records
- Disease epidemiology – **Surveillance**
- **Immunizations and Triage**
- **Administrative** (i.e. "Find Family Center")

CONSIDER THESE GOALS:

- Train **dental response teams**
- Develop educational curriculum for students and existing health workforce
- Build resource "stockpiles" for time of threat (Mutual Aid Agreements)
- Promote dental professionals role in distribution of medications, immunizations, and other essential needs

Support for Oral Health?

- **Needs Assistance** – FEMA/State cooperative venture that assists disaster victims with disaster-related serious needs and necessary expenses
- **Cora Brown Fund** – used to assist victims with disaster-related needs not available elsewhere to alleviate human suffering and promote well-being

Are You Ready?

Acknowledgements:

- Dr. William Buchanan (Faculty)
Dr. Francis Serio (Chair)
 - Department of Periodontal and Preventive Dentistry at the University of Mississippi School of Dentistry.

