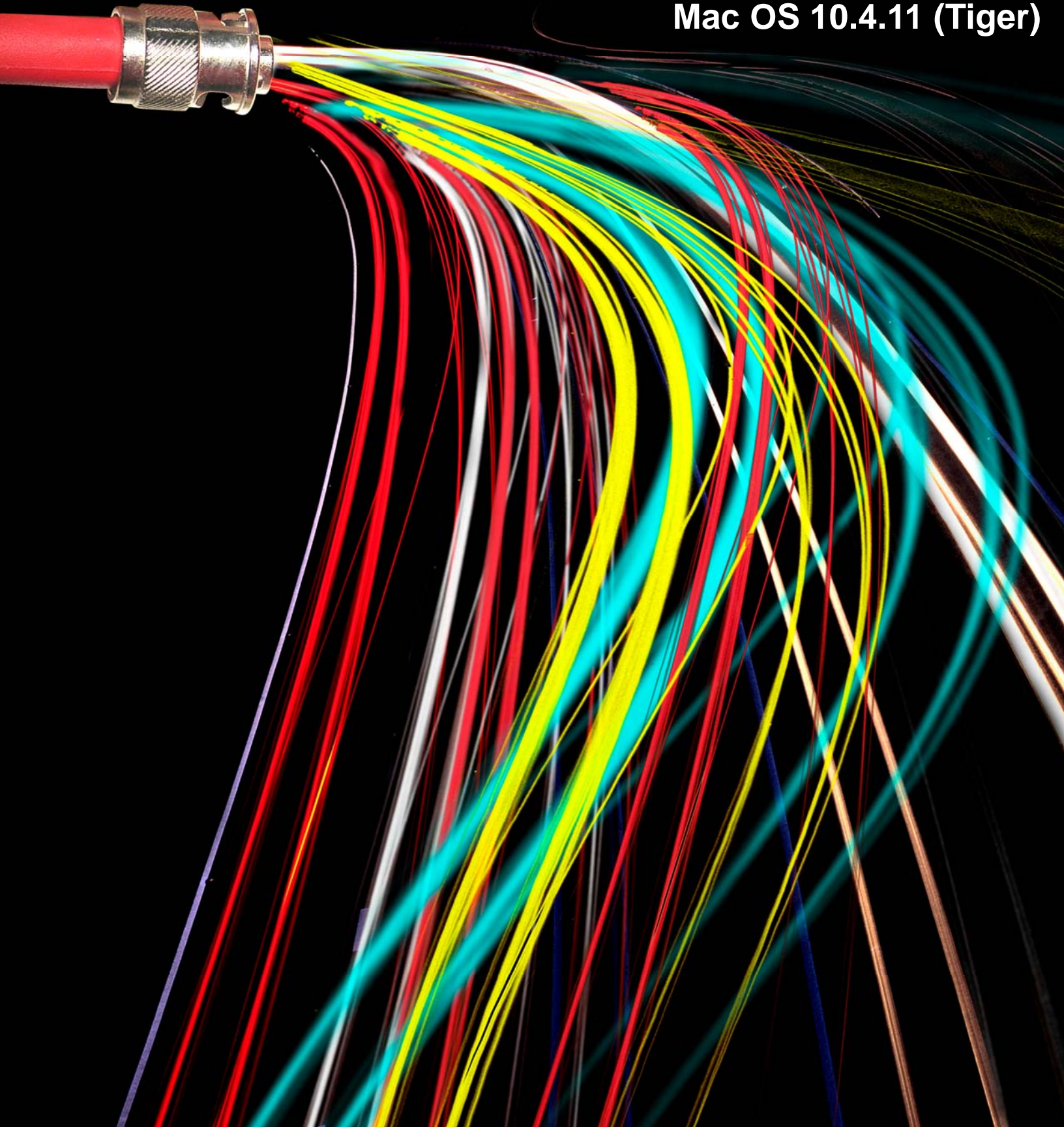


# Configuring your Wireless to WPA2 Encryption

Mac OS 10.4.11 (Tiger)



# Table of Contents

- 1 ABOUT THIS GUIDE .....3
  - 1.1 WHO SHOULD USE IT .....3
  - 1.2 TYPOGRAPHICAL CONVENTIONS .....3
- 2 INTRODUCTION.....4
  - 2.1 PURPOSE .....4
  - 2.2 SCOPE .....4
- 3 CONFIGURING THE WIRELESS CONNECTION .....5
  - 3.1 CONFIGURING YOUR WIRELESS ENCRYPTION .....5
  - 3.2 CONNECTING TO ULSECURE WIRELESS .....8

# 1 About this guide

This document will show you step- by-step how to configure your Wireless system to the University of Louisville's wireless authentication system.

Chapter 1, "About this Guide."

Chapter 2, "Introduction" gives an overview of the purpose and scope of the University of Louisville's wireless authentication system

Chapter 3, "Configuring the Wireless Connection", gives step-by-step instructions for configuring your wireless encryption as well as configuring your wireless connection for on-campus use

Chapter 4, "Frequently Asked Questions" provides answers to common questions about the configuring your software

---

## 1.1 Who Should Use It

This guide is intended for users connecting to the University of Louisville's on-campus wireless network using a Mac running Mac OS X 10.4.11 (Tiger) operating system.

---

## 1.2 Typographical Conventions

This document uses the following typographical conventions:

Command and option names appear in bold type in definitions and examples. The names of directories, files, machines, partitions, and volumes also appear in bold.

Variable information appears in italic type. This includes user-supplied information on command lines.

## 2 Introduction

---

### 2.1 Purpose

The purpose of this document is to provide step-by-step instructions for the configuration of UofL\_Wireless 2.1:

- UofL\_Wireless 2.1 is wireless registration system available to faculty, staff, and students for on-campus connection. It is a secure network that encrypts traffic on the network to prevent intrusions and interception of traffic
- All users of the UofL\_Wireless 2.1 connection must have their local machines set to WPA2/AES encryption in order to forge a connection to the wireless infrastructure on-campus
- The intended audience of UofL Wireless 2.1 are faculty, staff, or students who use a wireless connection to link to the Internet

### 2.2 Scope

---

This guide is intended for users connecting to the University of Louisville's on-campus wireless network using a Mac running Mac OS X 10.4.11 (Tiger) operating system.

---

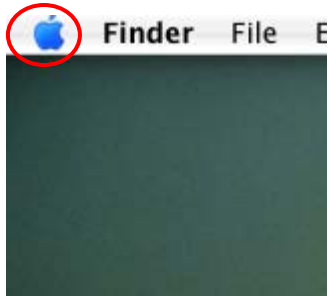
## 3 Configuring the Wireless Connection

---

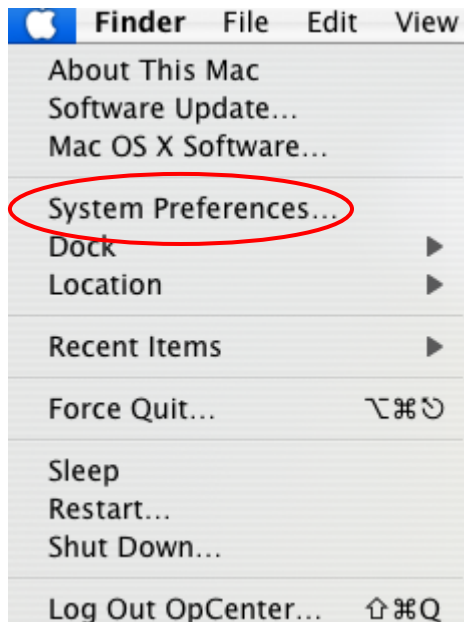
### 3.1 Configuring your Wireless Encryption

---

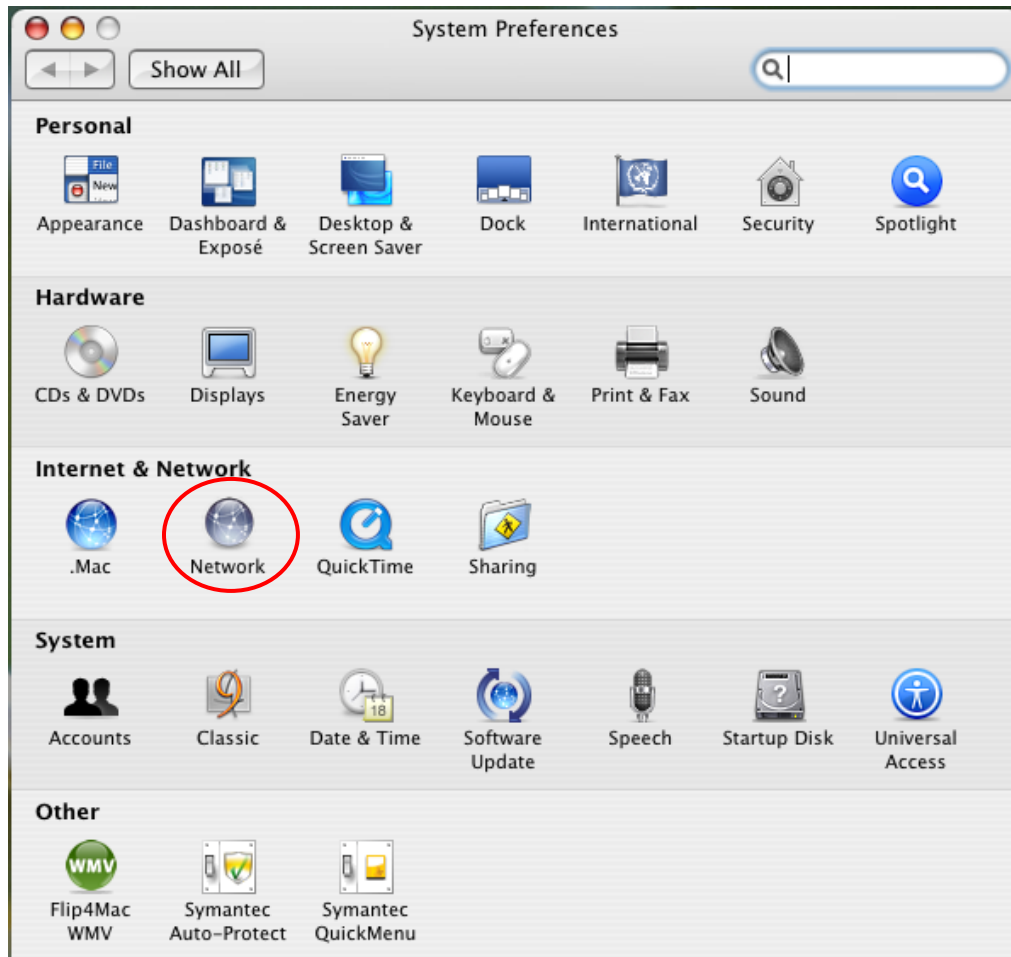
1. Click on the **Apple** icon.



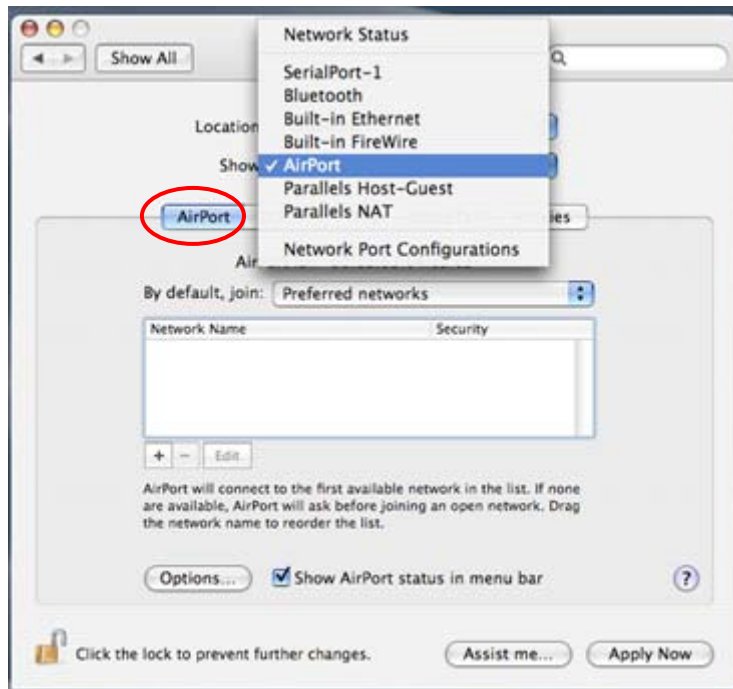
2. Select **System Preferences**.



3. Click the **Network** icon.



4. Click the **Airport** icon.




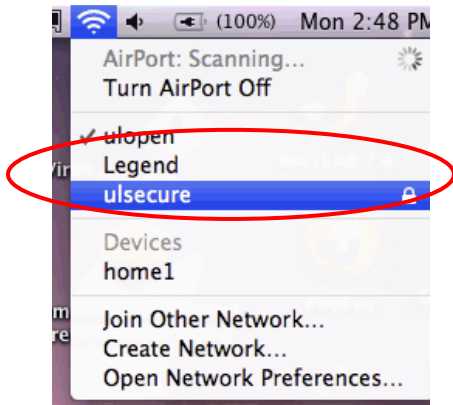
5. Ensure that **WPA2 Enterprise** is the selected encryption option.



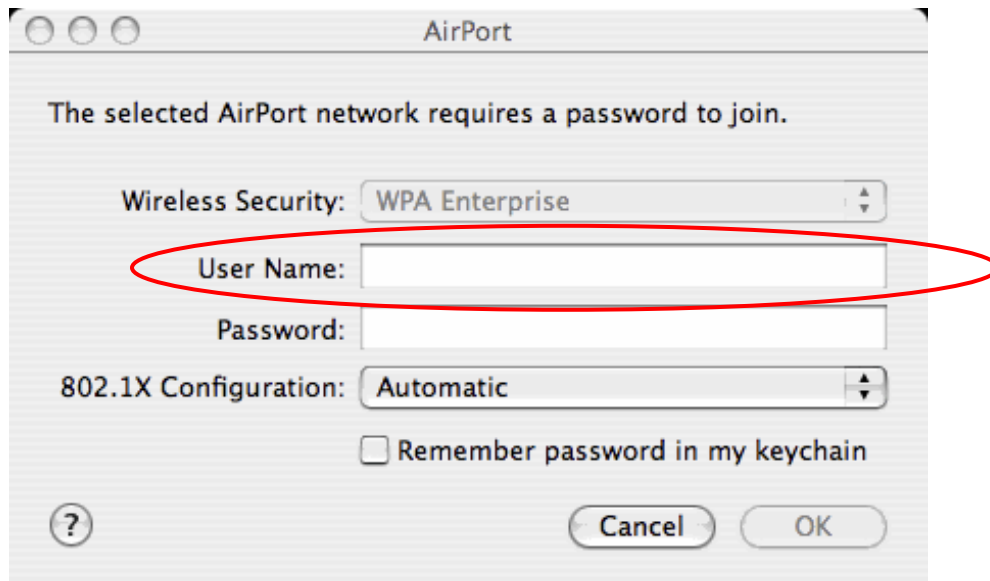
6. If **WPA2 Enterprise** is NOT selected, click the **Wireless Security** dropdown and select **WPA2 Enterprise**.
7. Click **OK**.
8. Click **Apply Now**.
9. Close the **System Preferences** window.

## 3.2 Connecting to ulsecure Wireless

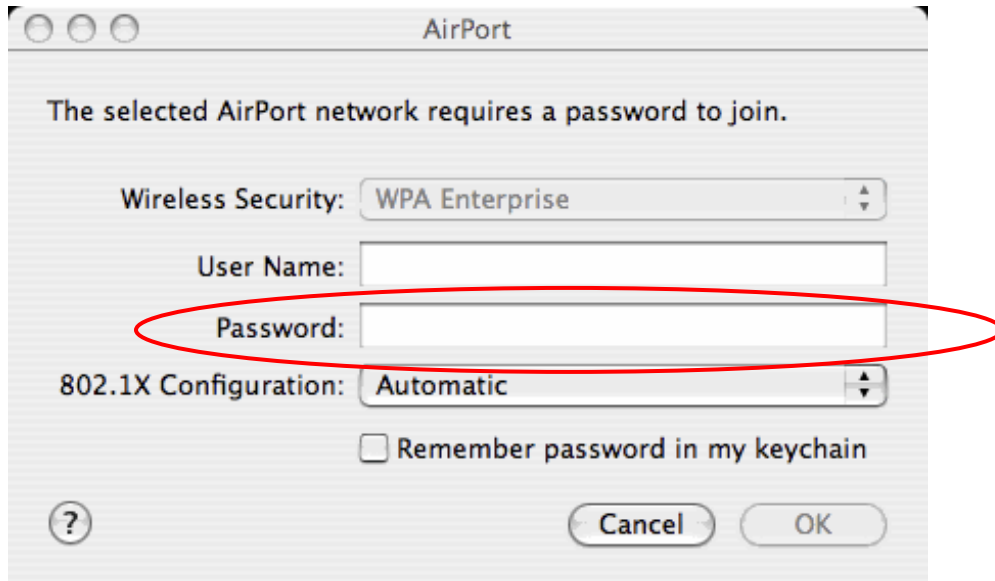
1. Click on the **AirPort icon** in the upper right corner of the screen .
2. Click **ulsecure**.



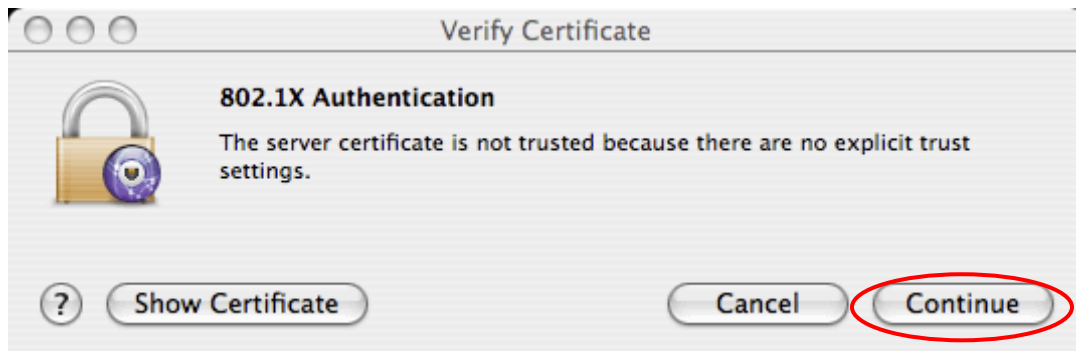
3. The **AirPort** window will appear. In the **User Name** field, enter your **ULink userid**.



- 4. In the **Password** field, enter your **ULink password**.

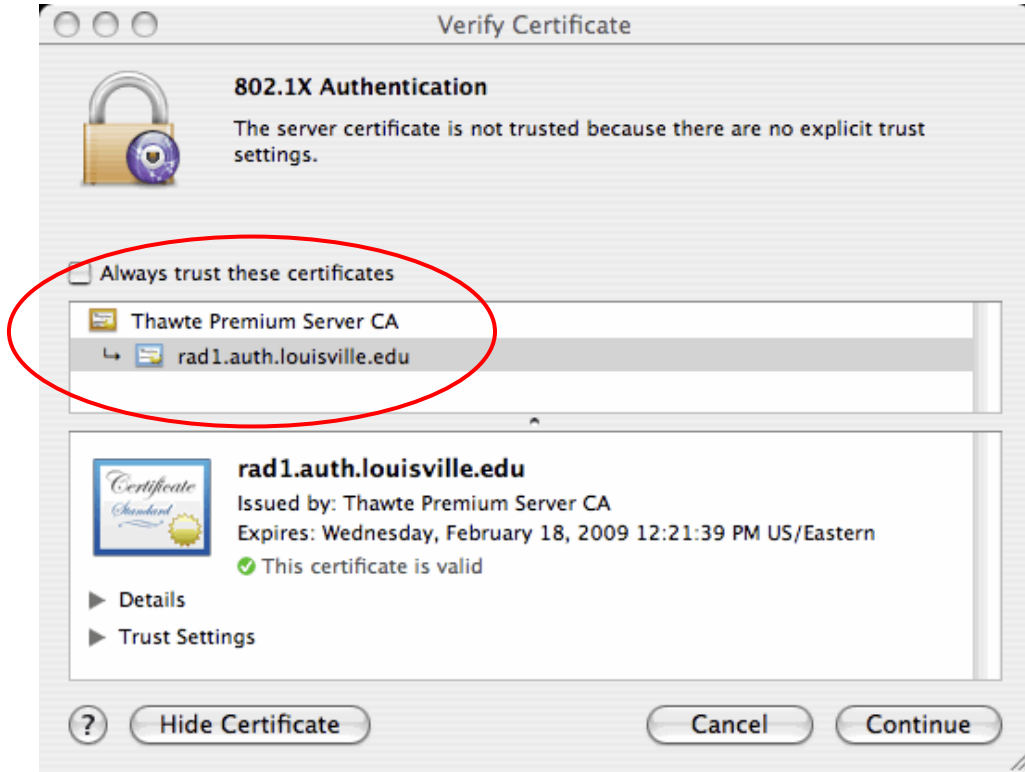


- 5. Click **OK**.
- 6. The **Verify Certificate** window will appear. Click **Continue**.

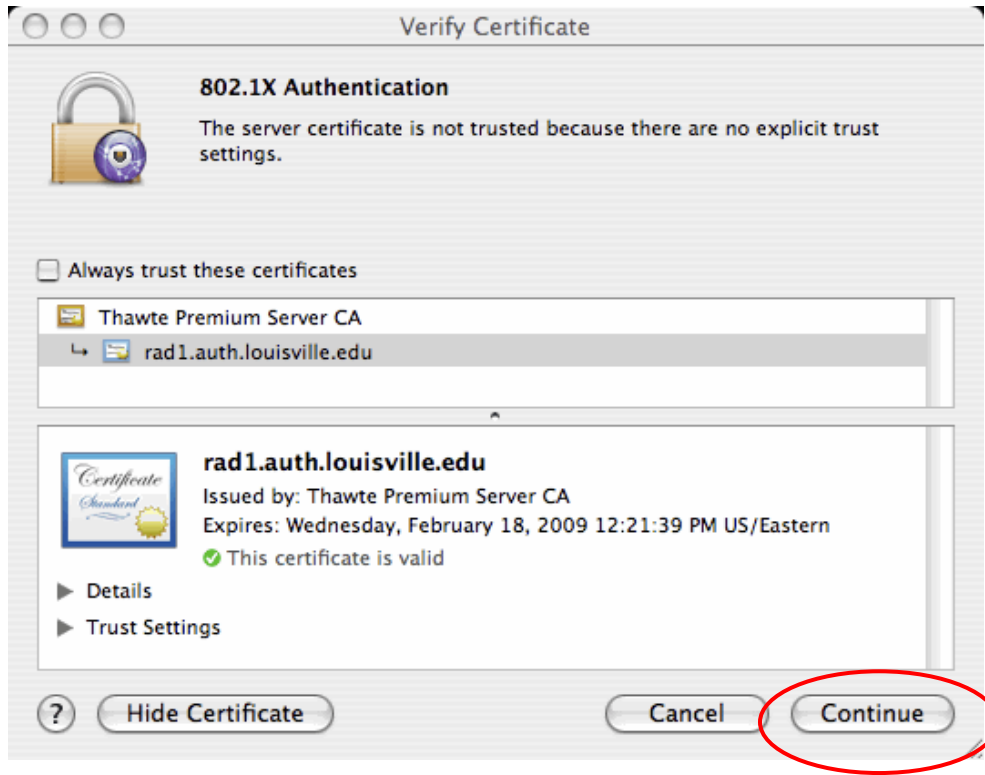


7. The **View Certificate** details window will appear. Verify that this certificate includes the following information:

**rad1.auth.louisville.edu**



- 8. Click **Continue**.



- 9. The **802.1X** window will appear. In the **User Name** field, enter your **ULink** *userid*.



10. In the **Password** field, enter your **ULink password**.



11. Click **OK**.