

Configuring your Wireless for WPA2 Encryption

Mac OS 10.5.2 (Leopard)

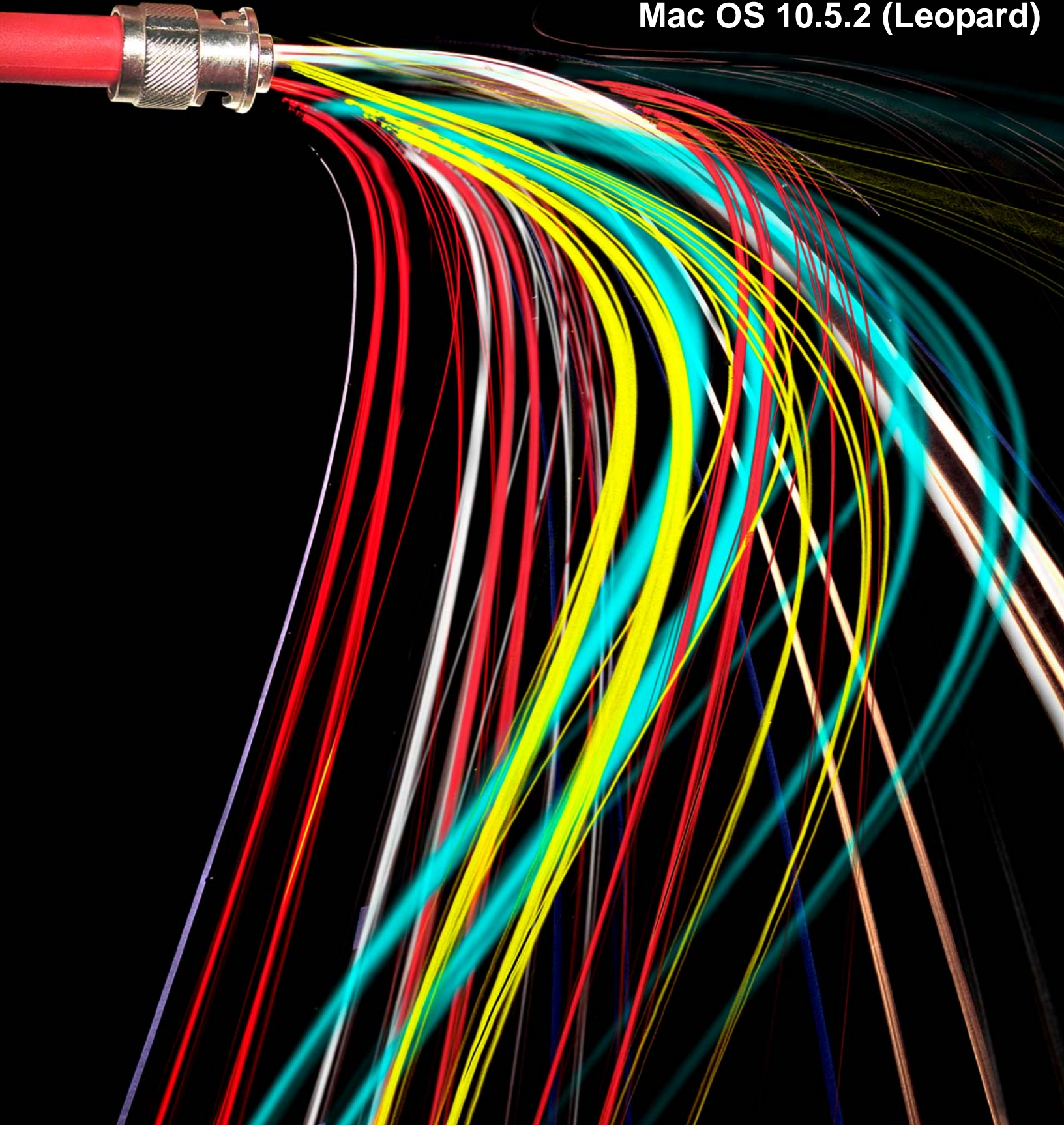


Table of Contents

- 1 ABOUT THIS GUIDE3
 - 1.1 WHO SHOULD USE IT3
 - 1.2 TYPOGRAPHICAL CONVENTIONS3
- 2 INTRODUCTION.....4
 - 2.1 PURPOSE4
 - 2.2 SCOPE4
- 3 WIRELESS ENCRYPTION CONFIGURATION.....5
 - 3.1 CONFIGURING YOUR WIRELESS ENCRYPTION.....5
 - 3.2 CONNECTING TO ULSECURE WIRELESS13
 - 3.3 TO AUTO CONNECT WHEN ON CAMPUS.....16

1 About this guide

This document will show you step- by-step how to configure your Wireless system to the University of Louisville's wireless authentication system.

Chapter 1, "About this Guide."

Chapter 2, "Introduction" gives an overview of the purpose and scope of the University of Louisville's wireless authentication system

Chapter 3, "Configuring the Wireless Connection", gives step-by-step instructions for configuring your wireless encryption as well as configuring your wireless connection for on-campus use

Chapter 4, "Frequently Asked Questions" provides answers to common questions about configuring your software

1.1 Who Should Use It

This guide is intended for users connecting to the University of Louisville's on-campus wireless network using a laptop or PC running Mac OS 10.5.2 (Leopard) operating system.

1.2 Typographical Conventions

This document uses the following typographical conventions:

Command and option names appear in bold type in definitions and examples. The names of directories, files, machines, partitions, and volumes also appear in bold.

Variable information appears in italic type. This includes user-supplied information on command lines.

2 Introduction

2.1 Purpose

The purpose of this document is to provide step-by-step instructions for the configuration of UofL_Wireless 2.1:

- UofL_Wireless 2.1 is wireless registration system available to faculty, staff, and students for on-campus connection. It is a secure network that encrypts traffic on the network to prevent intrusions and interception of traffic
- All users of the UofL_Wireless 2.1 connection must have their local machines set to WPA2 Enterprise (AES) encryption in order to forge a connection to the wireless infrastructure on-campus
- The intended audience is faculty, staff, or students who use a wireless connection to link to the Internet on campus

2.2 Scope

This guide is intended for users connecting to the University of Louisville's on-campus wireless network using a laptop or PC running Mac OS 10.5.2 (Leopard) operating system.

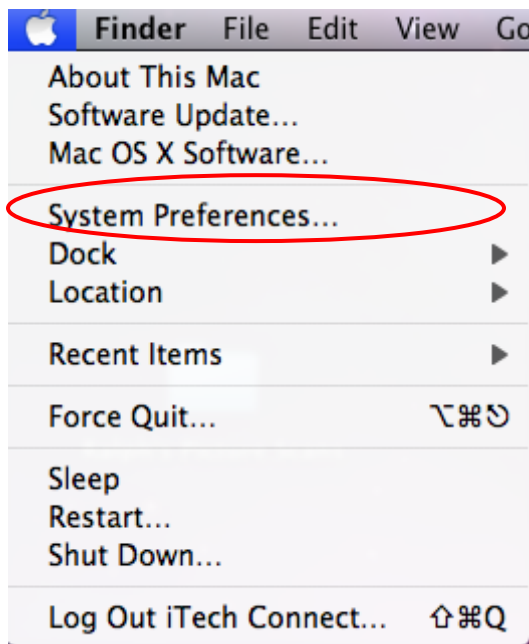
3 Wireless Encryption Configuration

3.1 Configuring your Wireless Encryption

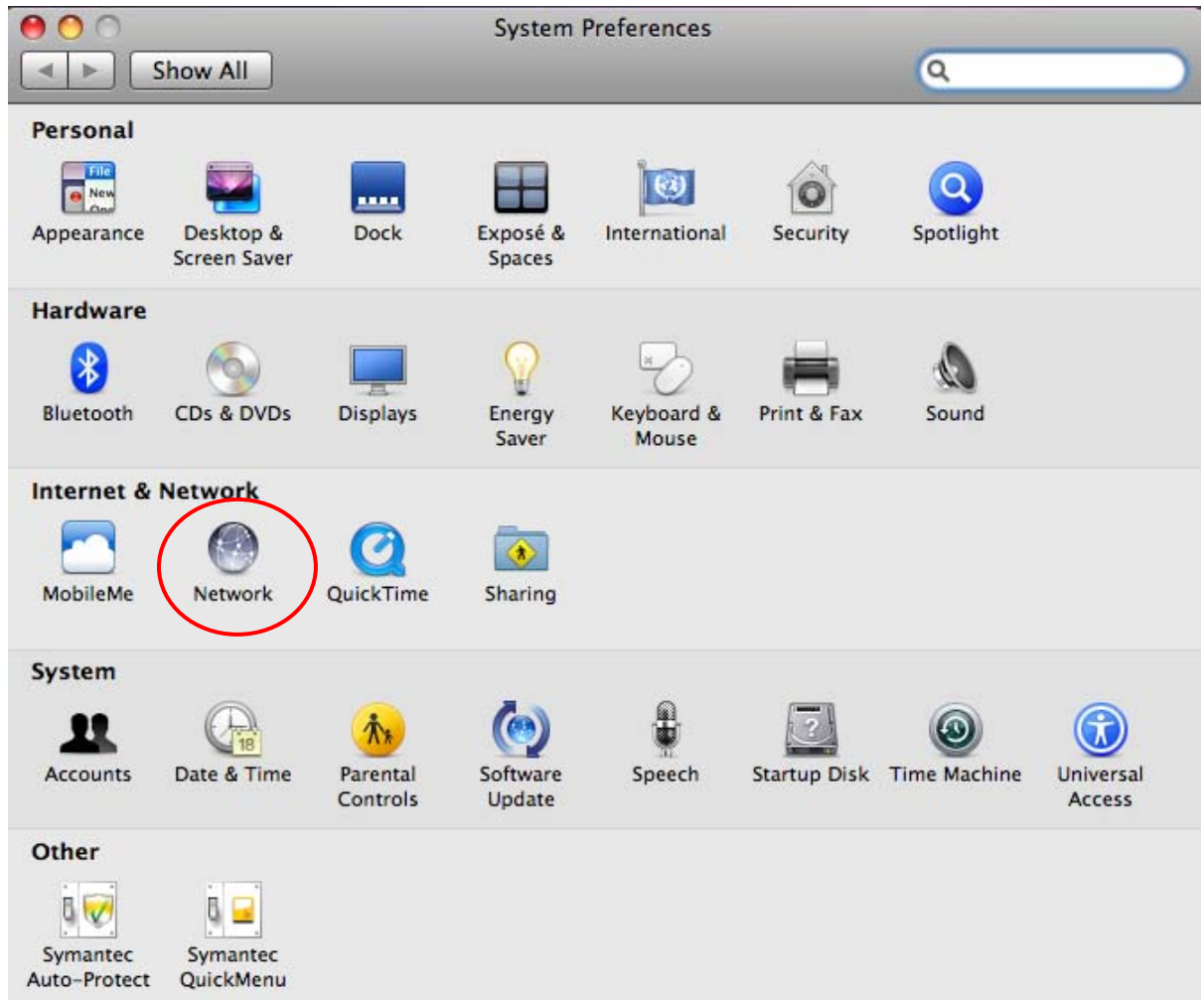
1. Click on the **Apple** icon at the top of your screen.



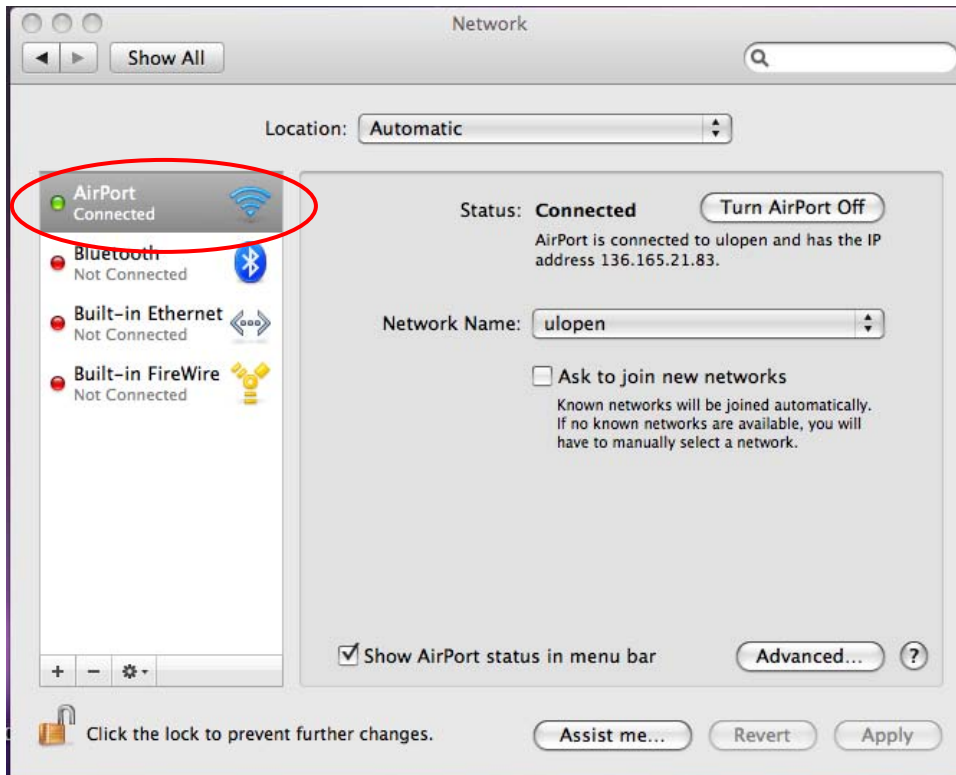
2. Choose **System Preferences**.



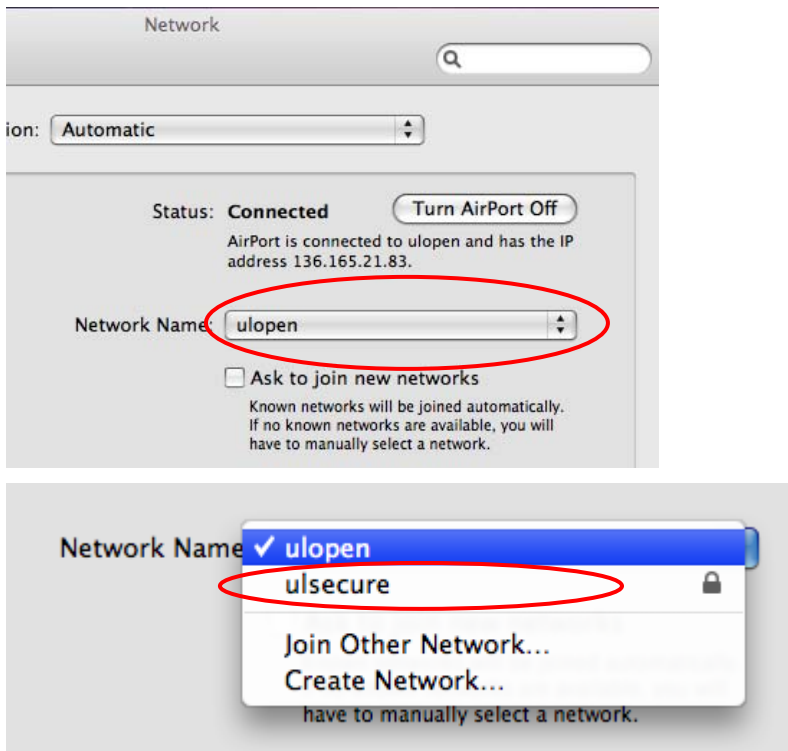
3. Click on **Network**.



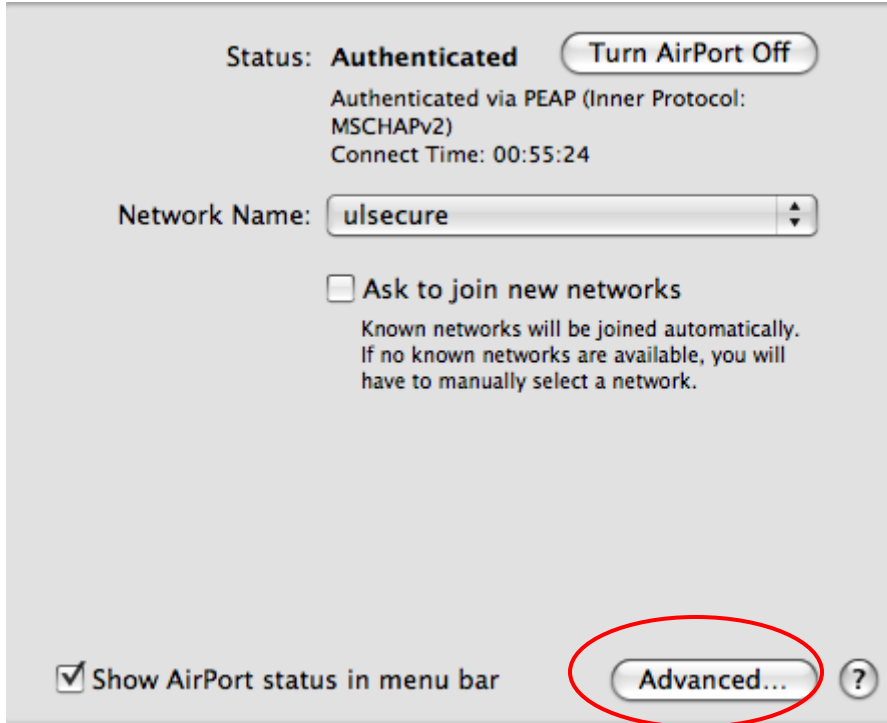
- 4. Click on **Airport**.



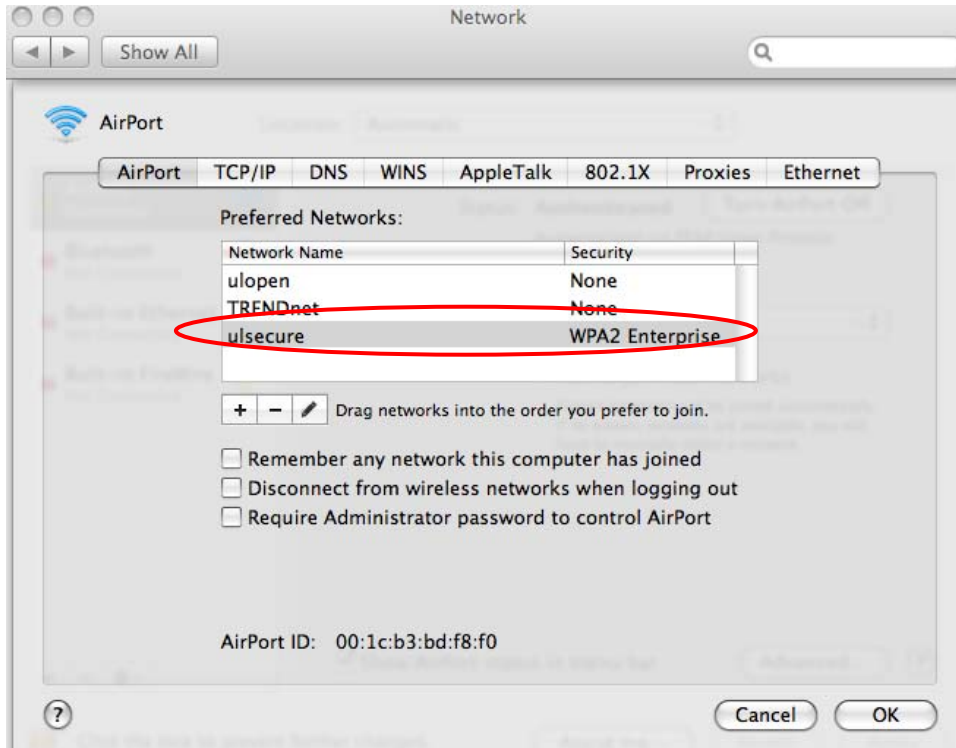
- 5. Select **ulsecure** from the **Network Name** dropdown.



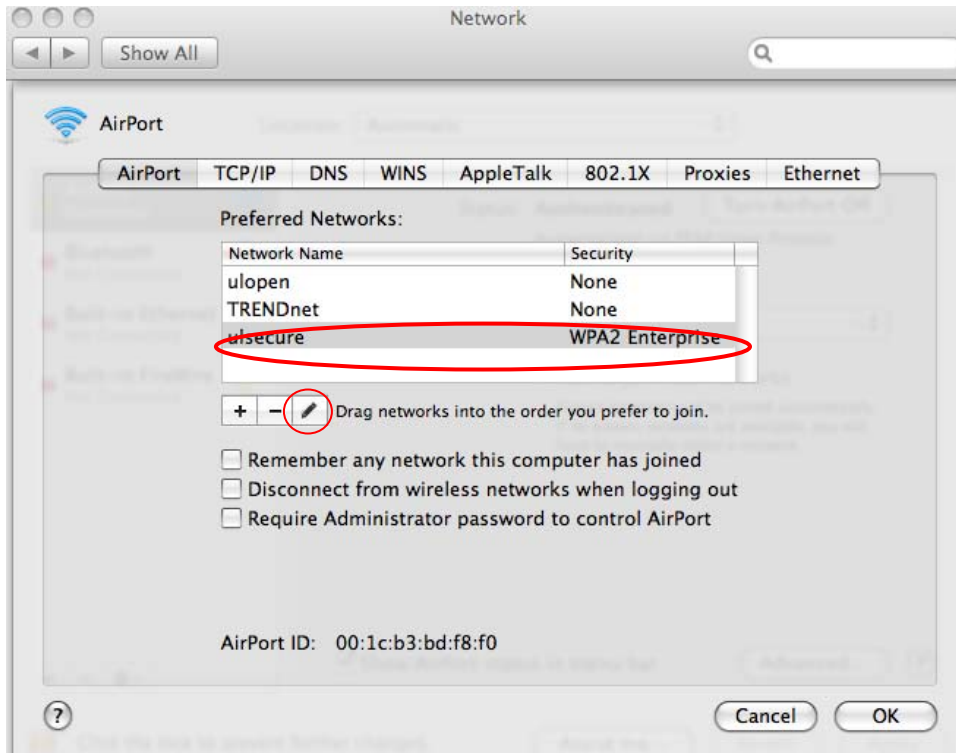
- 6. Click the **Advanced** button at the bottom of the **Network** window.



- 7. Verify that the **Security** is **WPA2 Enterprise**.



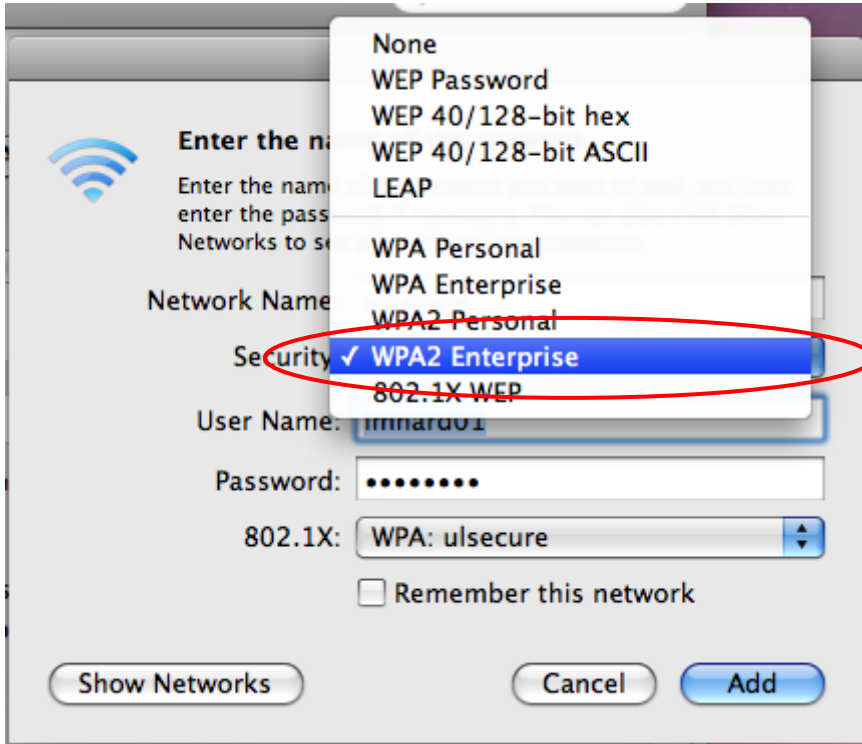
8. In the **Network** window click the **Edit**  button.



9. Click the **Security** drop-down arrow. Select **WPA2 Enterprise**.



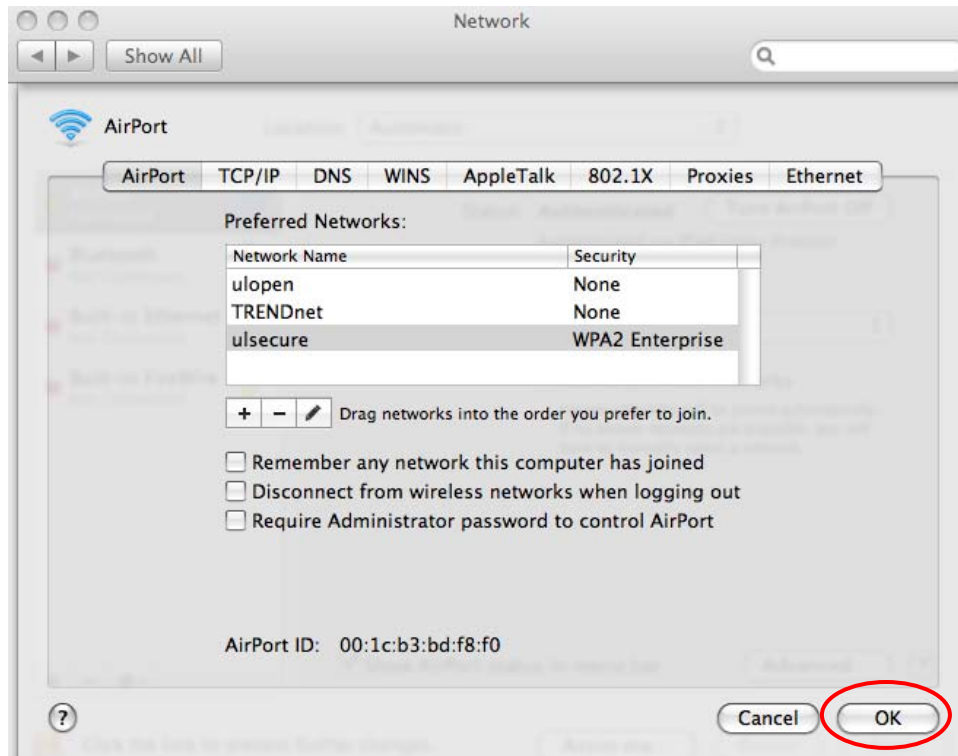
10. Select **WPA2 Enterprise**.



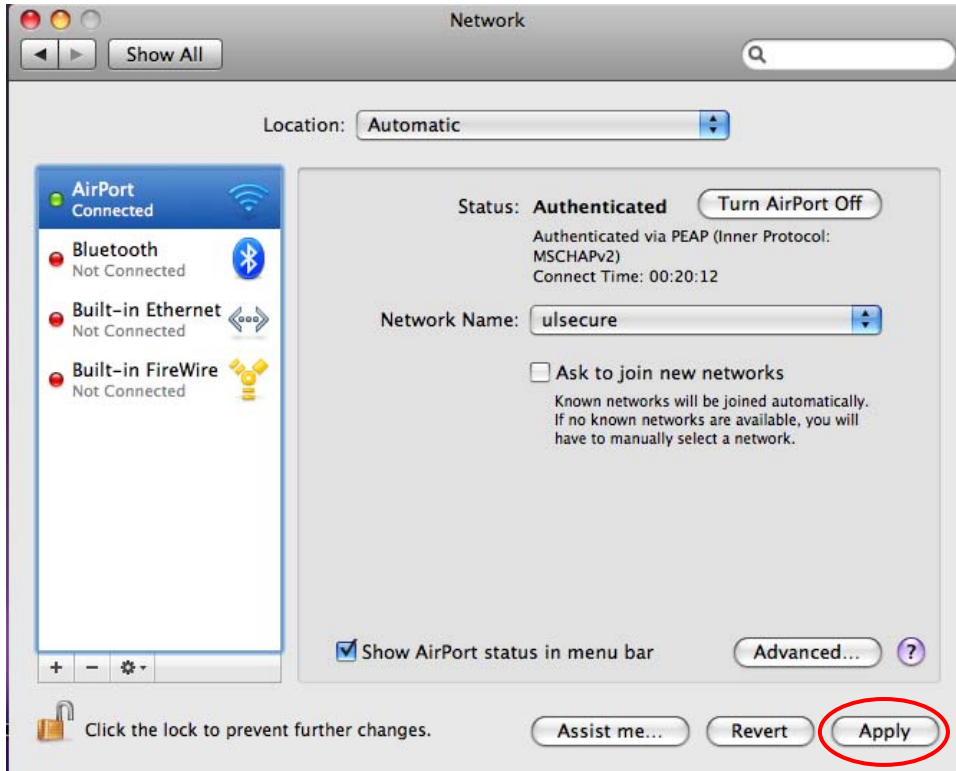
11. Click the **Add** button.



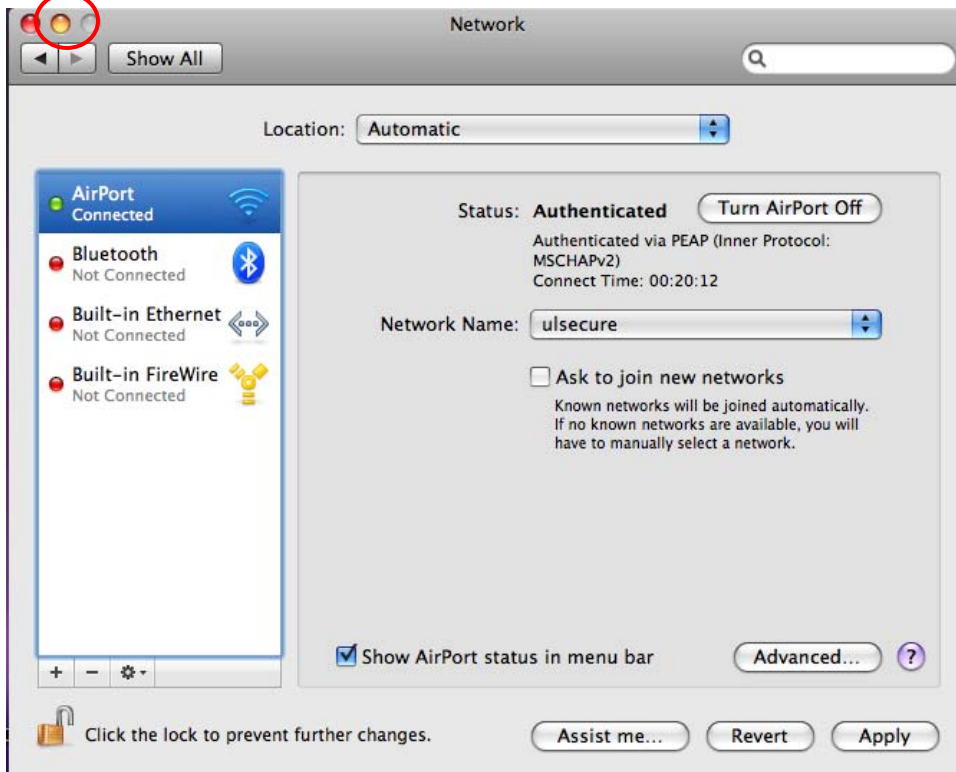
12. Click **OK**.




13. Click **Apply**.

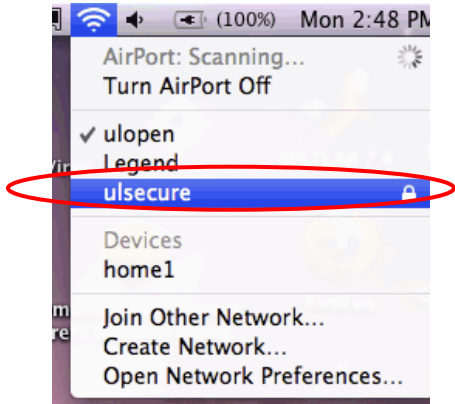


14. Click the **Network Close** button.



3.2 Connecting to ulsecure Wireless

1. Click on the **AirPort icon** in the upper right corner of the screen .
2. Click on **ulsecure**.



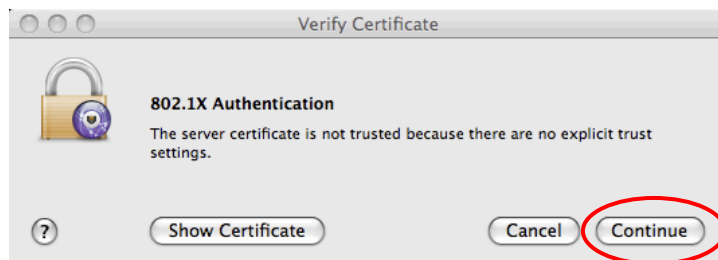
3. The **802.1X Authentication** window will appear. In the **User Name** field, enter your **ULink userid**.



4. In the **Password** field, enter your **ULink password**.

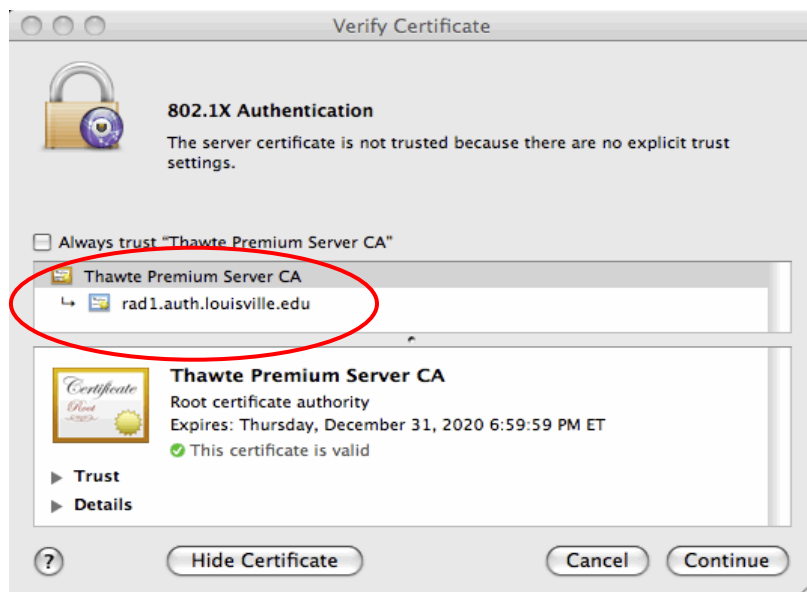


5. Click **OK**.
6. The **Verify Certificate** window will appear. Click **Continue**.




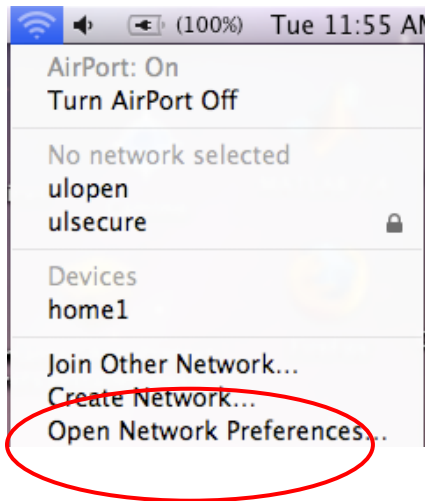
7. The **View Certificate** details window will appear. Verify that this certificate includes the following information:

rad1.auth.louisville.edu

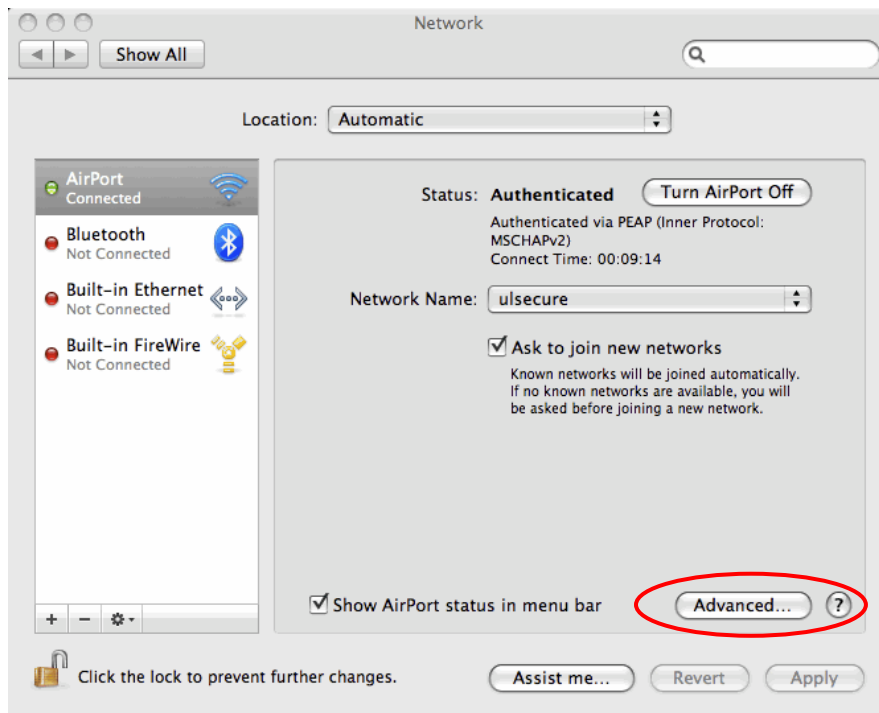


3.3 To Auto Connect when on Campus

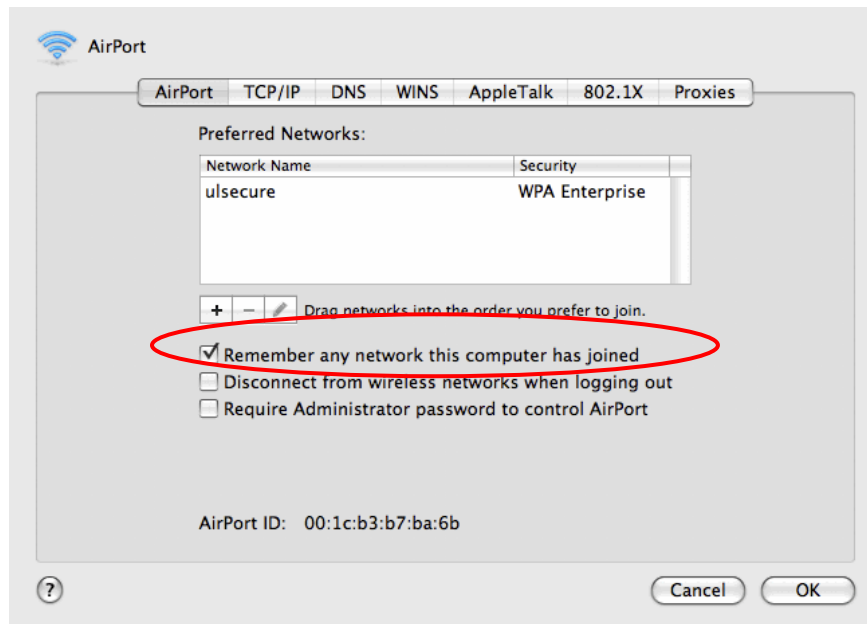
1. Click on the **AirPort icon** in the upper right corner of the screen .
2. Click **Open Network Preferences**.



3. The **Network** window will appear. Click **Advanced**.

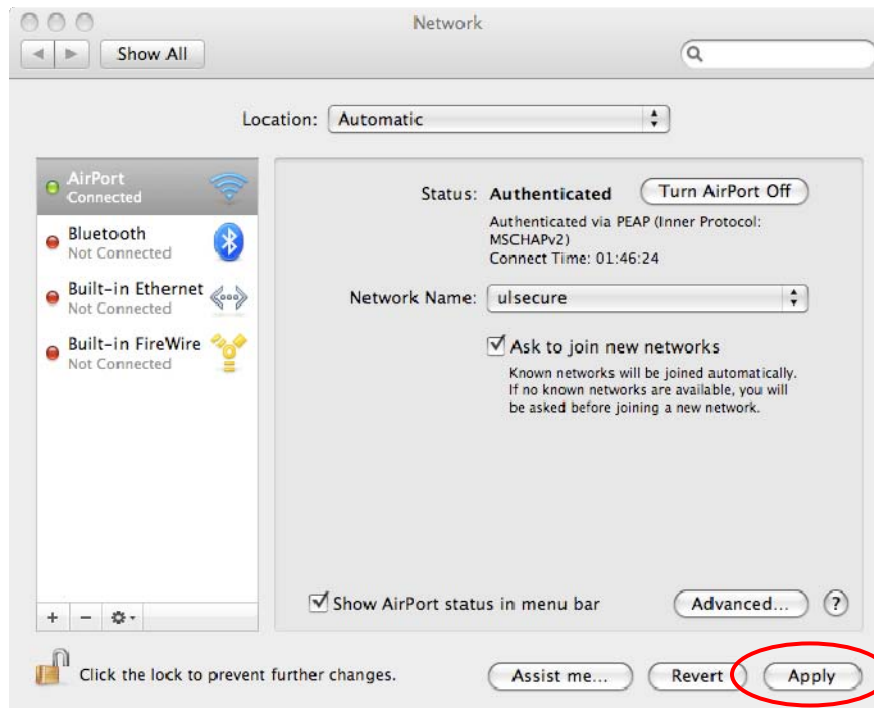


4. The **AirPort** window will appear. Click the checkbox next to **Remember any network this computer has joined**.



5. Click **OK**.

- The **Network** window will appear. Click **Apply**.



- Close the window.