

# STRATEGIC PLAN 2023–2025

---

Approved by Dental Leadership Committee April 7, 2023  
Approved by ULSD Faculty Assembly April 7, 2023

# UNIVERSITY OF LOUISVILLE

## STRATEGIC PRIORITIES



**UofL is a vital ecosystem that creates thriving futures for students, our community and society. We are the change agents for a better tomorrow. Over the next five to 10 years, here's how we'll get there:**

### LEARN

We unleash students' potential and prepare them for the careers, workplaces and complex challenges of tomorrow. We are committed to closing the opportunity gap for all students and radically altering the paths of generations by providing resources and support to students from a variety of socio-economic backgrounds. We expand learning beyond the classroom by collaborating with campus, community and industry partners to provide students engaged learning experiences, resulting in a better educated workforce to drive the economic growth of our region.

### DISCOVER

We concentrate our research, scholarship, innovation and partnership efforts toward solving global problems that will affect the human condition for years to come. We empower our communities by focusing on improving educational access and attainment, preventing violence and trauma and confronting inequities to reduce social, educational, economic and health disparities. We advance human health by leading a transformative shift that will help people live longer, healthier and more resilient lives. We engineer a future economy by developing and harnessing technological advancements to transform the workforce; and advancing manufacturing for a new energy economy.

### CONNECT

We are not just located *in* Louisville, we are of Louisville. As we succeed so does our city, our state and our world. Residents and businesses benefit from UofL's commitment to serving the community and spurring progress through research, innovation and entrepreneurialism. We encourage a purpose-driven, service mindset, empowering students to make a positive impact on the economic, social and cultural health of our community. Our Signature Partnership, an effort to enhance the quality of life and economic opportunity in a historically underserved area, is considered a national model for community engagement.

### WORK

Our people are the lifeblood of our shared higher purpose, driving our institution forward by living our Cardinal Principles and transforming our mission into reality. We provide opportunities for professional development and career growth, and offer a generous, competitive benefits package. We foster a culture of collaboration and work-life balance rooted in the spirit of always looking for ways to say "yes" to our employees. We come from different backgrounds, with a multiplicity of expertise, skills, beliefs and interests. This dynamic tapestry of strengths and diverse perspectives make UofL a place where potential is unleashed and positive change for humankind is fueled.

# SCHOOL OF DENTISTRY

## GUIDING PRINCIPLES

### VISION

To be the benchmark for dental education, patient-centered care, and groundbreaking research.

### MISSION

We will improve the oral and overall health of those whom we serve; transforming lives by educating oral health care professionals to provide patient-centered treatment through innovative pedagogical approaches, community engagement, and research. Woven through these activities is a dedicated commitment to diversity, equity, and inclusion (DEI).

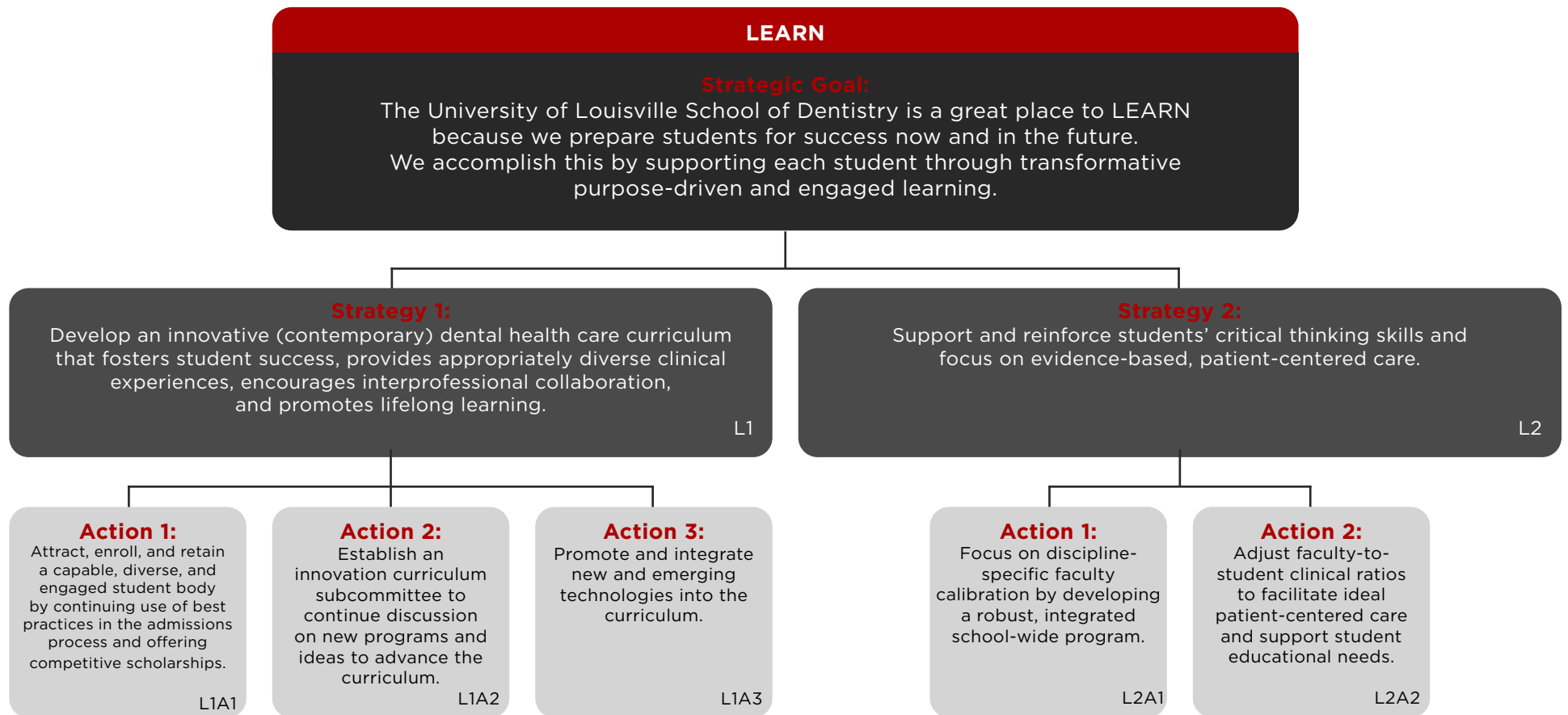
To foster an engaged community of oral health care providers through:

### CORE VALUES

- Humanism
- Diversity
- Life-long learning
- Evidence-based patient care
- Compassion
- Ethics
- Excellence
- Innovation
- Discovery
- Service
- Critical thinking
- Leadership
- Collaboration



# SCHOOL OF DENTISTRY STRATEGIC PLAN



# SCHOOL OF DENTISTRY STRATEGIC PLAN



**DISCOVER**

**Strategic Goal:**  
The University of Louisville School of Dentistry is a great place to DISCOVER new knowledge that improves lives. We accomplish this through impactful research, innovation, scholarship, and creative activity.

**Strategy 1:**  
Increase productivity and innovation in research, scholarship and creative activities to bolster our prominence among Research 1 universities.

D1

**Strategy 2:**  
Develop an infrastructure (e.g., faculty development activities, additional funding opportunities, training programs) that supports faculty development and reinforces evidence-based learning in the curriculum.

D2

**Action 1:**  
Support current faculty and recruit tenured and/or tenure track faculty to increase research productivity and strengthen and expand research activities and opportunities.

D1A1

**Action 2:**  
Invest in the recruitment, development, and retention of high level productive faculty researchers and staff, providing long term pathways for postdoctoral and graduate students.

D1A2

**Action 3:**  
Expand areas of interest, particularly in the clinical and translational research.

D1A3

**Action 1:**  
Fund an endowed chair position in research.

D2A1

**Action 2:**  
Provide initiation funds and training opportunities for faculty participating in and/or establishing research programs.

D2A2

**Action 3:**  
Expand innovation and translational research opportunities for students embedded with the predoctoral dental, dental hygiene and graduate programs that support clinical research and may lead to clinical trials.

D2A3

# SCHOOL OF DENTISTRY STRATEGIC PLAN



## CONNECT

### Strategic Goal:

The University of Louisville School of Dentistry is a great place with which to CONNECT because of our impact on the oral health of the community and the economic, social, and cultural aspects that contribute to the well-being of people living in Louisville, the Commonwealth, and beyond. We accomplish this through establishing outreach satellite dental clinics across the Commonwealth, and providing education, principled leadership, responsible stewardship, research, and engaged partnerships.

### Strategy 1:

Increase the presence of University of Louisville School of Dentistry in the metro Louisville area and the Commonwealth through direct patient care, research, community engagement, and partnerships with the community, industry, government, and alumni.

C1

### Strategy 2:

Increase internal, community, and alumni engagement.

C2

#### Action 1:

Recognize and celebrate works that empower our communities and strategic partnerships through oral health care services, education, and research.

C1A1

#### Action 2:

Expand clinical outreach sites in Louisville and the Commonwealth (minimum of 2 during the current three-year strategic plan).

C1A2

#### Action 3:

Strengthen the institutional relationship between ULSD and other units internally and externally with our alumni and partners.

C1A3

#### Action 1:

Create social, cultural, and learning opportunities within ULSD. Bring people to campus or bring the campus to people (virtual and external partnerships) by leveraging clinician, faculty, staff, and student expertise and talent.

C2A1

#### Action 2:

Develop and implement a comprehensive alumni engagement plan.

C2A2

# SCHOOL OF DENTISTRY STRATEGIC PLAN

