



Winter
2012
Vol. 20, Issue 2



The Women's Center

www.louisville.edu/womenscenter

News

UofL Women's Center Celebrates ECS Empowerment Luncheon and 20th Anniversary Celebration

by Phyllis M. Webb, Program Coordinator, UofL Women's Center

This past November was a busy time for staff and students of the UofL Women's Center as they sponsored two events in one day—the 10th annual Elizabeth Cady Stanton Empowerment Luncheon and 20th Anniversary Celebration. Class Act Federal Credit Union was the presenting sponsor of both events.

The featured keynote speaker for the luncheon was Crit Luallen, former Kentucky State Auditor, who spoke on "Accountability in Leadership," which she explained means holding our leaders accountable and also being accountable ourselves as fully engaged citizens.

She talked about all the negative campaign messages leading up to the recent elections with "over one billion dollars spent just by outside groups in the presidential campaign, much of it without any accountability or transparency."

As we follow the public debates in Frankfort, Ky. (with the upcoming legislative session in January), and in



Crit Luallen

Washington, D.C. ("the fiscal cliff"), she says "that all of this demands that our leaders show a commitment to be accountable to all those they serve by working for the greater good."

She added, "To secure our future, Kentucky desperately needs accountability from leaders at every level" and that "the private sector and private citizens are the key to holding public leaders accountable."

After serving two 4-year terms as Kentucky's Auditor of Public Accounts, Luallen says that from audits conducted by her office, "we learned that our citizens in every county must expect more and demand

more of their elected leaders. They must become positive forces for change at the grassroots level when they suspect abuse of the public trust and why they are choosing their elected leaders."

The state of Kentucky is faced with some "long-term challenges, according to Luallen, and the state needs every public leader to be committed to the highest levels of integrity and vision to move us forward. "The bottom line is Kentucky simply has too few resources and so many critical needs, we simply must have leadership grounded in integrity and committed to

progress." She also says that it is important that citizens become engaged in the democratic progress.

In her talk, she also discussed the importance of education and how "we desperately need more women involved in the public arena as active participants and candidates themselves; not just for what they can do for women but also what that can do for all of our future."

She pointed out that the statistics for women in



Mary Karen Powers, immediate past director of the UofL Women's Center is presented an award from the office. Pictured is Phyllis M. Webb and Valerie Casey.



Kentucky are alarming in terms of political participation, employment and earnings, and health and well-being. She says that we need to reach those Kentuckians who have historically been left out of our education and economic progress—those women who are disenfranchised and who feel their voices won't be heard; "those women without a voice—women struggling for more job skills, for quality child care, for affordable health care..."

In closing, she urged all of those in attendance to become more fully engaged in the public arena by "following the issues; reading and understanding the record and positions of candidates; supporting those who reflect your interests and most importantly holding their feet to the fire on all issues important to you. In addition, follow the spending; read and watch as legislation and the budget are debated during legislative sessions; let your elected leaders hear from you personally and let them know you are holding them accountable."

(*See sidebar on some of the long-term challenges facing Kentucky & some statistics on women in Kentucky.)

In addition to Luallen's talk, the Women's Center presented its annual Mary K. Tachau Gender Equity Award (sponsored by the Commission on the Status of Women) and the Dr. M.

Celeste Nichols Professional Development Award (sponsored by the UofL Commission on Racial Equality, the Dennis C. Golden Torchbearer Endowment through Student Affairs, and the Women's Center).

The Tachau Gender Equity Award, which recognizes a member of the UofL community who has done significant work toward gender equity, was given to Shelly Santry, Assistant Professor and Director of the Brandeis School of Law Domestic Violence Clinic.

The Nichols Award was presented to three UofL graduate students for professional development. They are Erin Ruth McCoy (Humanities); Laneshia R. McCord (Social Work) and Erica Caton (Social Work).

(More details about awards and recipients are on the Women's Center web site, <http://www.louisville.edu/womenscenter>).

The anniversary celebration included comments from the Women's Center interim director, Valerie Casey. There were also comments from former and current UofL students who spoke about the impact the office has had on their lives. They included former and current members of the UofL Women 4 Women student group: Gabby Maxedon; Blair Bowman Hayes; Emma Chapman, current president of the W4W student chapter; Jennifer Frieders, (student veteran); Amanda Denton-Hobbs (2011 Nichols Award winner); and Kathryn Williams, (Student Parent Association/ Moms Support Group). Robin R. Harris, co-chair and long-

Shelly Santry (center) is the recipient of the 2012 Mary K. Tachau Gender Equity Award. She is pictured with (left to right): Valerie Casey, Interim Director, UofL Women's Center; Susan Duncan, Interim Dean, Brandeis School of Law; Phyllis Webb, Program Coordinator, UofL Women's Center; Ann Larson, Vice Dean, UofL College of Education & Human Development; and Brenda Hart, Director of Student Affairs, UofL Department of Engineering Fundamentals.



Left: Erica Caton, one of the recipients of the 2012 Dr. M. Celeste Nichols Professional Development Award, talks about her professional development plans for the award. Right: Mary Jackey accepts an award on behalf of the Class Act Federal Credit Union. Class Act was the major sponsor of the ECS Empowerment Luncheon and Anniversary Celebration held on Nov. 14. (Additional photos of the luncheon and anniversary are on the Women's Center's web site, <http://www.louisville.edu/womencenter> and Facebook page.)

time member of the Kentucky Women's Book Festival, spoke about its beginnings and the continuous support of the office. Ashley Wimsett, a graduate student in the office, talked about some of the upcoming spring programs.

Those honored at the celebration included Mary Jackey, (Class Act Federal Credit Union); Dr. Judi Jennings, (founding director of the

UofL Women's Center), Mary Karen Powers (immediate past director of the Women's Center); Eleanor Jordan (Executive Director of the Kentucky Commission on Women) and Dr. Mordean Taylor-Archer (UofL Vice Provost for Diversity & International Affairs).

Music entertainment was provided by the Jerry Tolson Quartet.

Message from the Interim Director



Valerie M. Casey,
Interim Director

Have you heard about the Women's Center? We are producing remarkable programs, taking exciting trips and engaging students, employees, sponsors, and community members. The past few months have

taken the Women's Center to a new level of involvement and sponsorship and we have given ourselves a new look with our newsletter and a banner which hangs outside the Administrative Annex where we are located. It reads: "Welcome," and we hope you will accept the invitation and visit us at the Women's Center when you're on campus or participate in one of our many exciting programs.

Our staff would love to share with everyone the enthusiasm and positive comments we received from our ECS

Women's Empowerment Luncheon and Anniversary Celebration in November. Thanks to our presenting sponsor, Class Act Federal Credit Union; our speaker, Crit Luallen, for her comments and challenge to us to hold leaders accountable; and to our many returning and first-time attendees who made the program such a huge success! Congratulations to our remarkable group of women who were nominated for the Tachau Gender Equity Award and congratulations to the winners of our Nichols Award who competed against the strongest competitors to date. Congratulations also to our honorees at the Women's Center Anniversary Celebration: Dr. Judi Jennings, Mary Karen Powers, Eleanor Jordan and Dr. Mordean Taylor-Archer and Class Act Federal Credit Union. Please read about all of our honorees and winners in this newsletter and view all the pictures online at <http://www.louisville.edu/womenscenter>

The Women's Center extends a huge thank you to the students, graduates and staff of the University who spoke so highly of the Women's Center at our anniversary celebration. You are the reason we love our jobs and show up for work every day. Thanks to you for your energy, your insights and your inspiration which enhance our programs and allow us to be of service and to support you.

As we move into the next calendar year, the Women's Center is looking forward to the annual Kentucky Women's Book Festival which we co-sponsor with UofL Libraries, the Transformation Tea for Women of Color and our Allies, our College Women's Leadership Conference, our Human Trafficking Awareness Conference, and our trip to Peru. We appreciate your support and as the banner says, we "Welcome" your involvement with the UofL Women's Center.

Margaret Pentecost: Educator, Mother and Wife, Volunteer...*SUPERWOMAN*

by Prafula P. Sheth, Ed.D., UofL Student Advocate & Women's Center Board Member



Margaret Pentecost

Do you know someone who is a mentor, an advisor, an administrator, a supervisor, an educator, a former stay-

at-home mom, a Ph.D., a volunteer in her faith-based missionary work, a woman who grew up in a West Tennessee rural farming community with limited opportunities for higher education? Do you know someone who holds a college position where she helps make a difference in her students' lives, someone who travels to far-away lands; and above all, who enjoys her work?

Meet Margaret Pentecost, Ph.D., Assistant Dean, College of Education and Human Development (CEHD) at UofL. Read her life story and get a

glimpse of her world-view in her own words.

Please share a brief overview of who you are.

Pentecost: I spent the first 14 years of my marriage as a stay-at-home mom of three sons. I came to UofL in 1987 to finish my degree when my youngest son started first grade. I earned a B.S. in Physical Education and Health, and then a Master's of the Art of Teaching (MAT) degree.

I began working as an instructor and later became the first director of the Physical Education Activity Program

in Health and Sport Studies. I worked on the Health Sciences campus from 1995 to 2000 in the Area Health Education Center (AHEC).

In 2000, I returned to the College of Education and Human Development (CEHD) to teach and work with CEHD faculty to develop grant proposals and sponsored projects. I completed my Ph.D. in Education Administration in the Department of Leadership, Foundations, and Human Resource Education in May 2003. In 2005 I was selected as the Assistant Dean of Education Student Services



in the Education Advising and Student Services offices. I continue to serve in that position.

What is your philosophy about working with students, staff, and faculty?

Pentecost: I love working in an environment that helps make a difference in people's lives. My job is one of the best because of the rewards of seeing the growth and development of so many others. I encourage students to find something that suits them, and to also develop a passion for their career choices.

My service on university-wide committees has given me opportunities to mentor other women and minorities. For the past five years, I have served on the Commission on the Status of Women (COSW). I also worked on the task force for the development of campus-based early child development center for children aged six weeks to four years. After decades of the hard work of many and support of the University, in 2008 the ELC became a reality as a thriving, healthy, growing entity serving the campus.

I work to provide opportunities for meaningful service learning

opportunities for our students. Growing up as a farm girl in West Tennessee, I never dreamed that I would travel to Central America, Africa, Europe, and the Philippines. Through education and service, I have traveled and developed relationships with people all over the world

I found through my travels that we have more in common than differences. All of us want safe communities, homes, good health, stable government, education for our children, and work that allows us to support our families. There is hope and encouragement when these communities see that others care about them.

Briefly, what are those non-tangible moments in your work life – those “a ha” moments?

Pentecost: I love experiencing the buzz of activity on campus when all the students come back in the fall through Orientation and Welcome Weekend, but participation in Commencement and graduation is one of my favorite days of the year. Seeing a traditional or a non-traditional student fulfill his or her goal of a college degree gives me goose bumps.

Describe your volunteer efforts in Louisville, Belize and other places.

Pentecost: As a full-time mom, I spent many years volunteering in my children's

schools, PTA, Home of the Innocence, coaching youth teams, and working with community groups. For the past 13 years through UofL, the South Louisville Rotary, and my church, we have made about 40 trips to Belize working mostly in the Red Bank Village, a very poor and remote Mayan village in the southern part of the country.

In Belize, we work with a local church to support schools and to teach women in the village to sew. We have delivered school supplies, several thousand books, clothes, carpentry tools, musical instruments, technology, and nearly 100 sewing machines to help their local schools and, particularly, women.

Last year, through the support of CEHD Dean Blake Haselton, I started an International Teaching Experience (ITE) in Belize. In the first year, 17 students participated in the program. Another 19 registered to participate next spring. One of the students who went on the ITE trip in 2012 had never been out of the country. Following the experience, she has applied for a Fulbright English Teaching Assistantship this fall.

When we began working in the Red Bank School in 2002, the classroom walls were almost bare. The teachers had books related to each subject, but the only resources they had

were a blackboard and chalk. Today, the classrooms are filled with learning resources, classroom libraries, and teaching materials. Belizean teachers have participated in professional development activities at UofL and returned to Belize to implement in their classrooms what they learned.

I am an active member of the Sojourn Community Church and participate in many volunteer activities in the community, including tutoring elementary children in reading or mathematics. We recently adopted a Burmese refugee family in Louisville. We work with them to get them acclimated to living in the United States and to learn to read and speak English.

Please tell us about your family, grandchildren, and how you envision your life 10 years from today.

Pentecost: I have been married for 37 years to my husband, Thomas Mayo Pentecost. He has been my partner in many of the projects listed above and supportive of the others. He is also an active volunteer. We have three sons and four grandchildren. I plan to retire at 65, but I certainly don't plan to stop working. I hope to be active in volunteer work, gardening, sewing, traveling around the world, and spending time with my family and friends.



A free, open-to-the-public event

UofL Women 4 Women Student Chapter & Women's Center Hosts Human Trafficking Conference on Jan. 16, 2013

The University of Louisville Women 4 Women student group, in conjunction with the UofL Women's Center, is hosting a conference to raise awareness on human trafficking on Wednesday, Jan. 16. The event, "Modern Day Slavery: Breaking the Chains," is free and open to the public and will take place at 6 p.m. in the Red Barn on the U of L Belknap Campus.

The guest speakers will be Toshia Kimbler, a victim of human trafficking and a member of S.O.A.P. and Colleen Clines, co-founder and director of the Anchal Project. Theresa Flores, a victim of

human trafficking who has been featured on The Today Show and MSNBC will make a special appearance. Come and enjoy an informative event about the importance of stopping this tragic epidemic. Coordinators of the program want to raise awareness and also take action against the atrocity of human trafficking in our community, our nation, and our world. To find out more information about the event go to <https://www.facebook.com/event/446563392048347>. There is limited space available. To register in advance, go to <http://uoflhtc.eventbrite.com>. For



additional details, call the Women's Center at (502) 852-8976.

(Submitted by Ashley Wimsett, Graduate Assistant, UofL Women's Center)

Scholarship Information

The University of Louisville Financial Aid Office maintains the following lists & more:

<http://louisville.edu/financialaid/scholarships/outside-scholarships.html>

<http://louisville.edu/financialaid/scholarships/university-departmental-scholarships.html>

<http://louisville.edu/financialaid/scholarships/admission-based-scholarships.html>

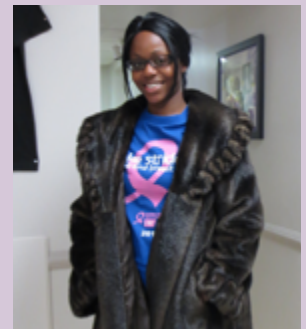
<http://louisville.edu/financialaid>

OTHERS:

<http://www.maldef.org/leadership/scholarships/index.html>



Stay Fit in College Scholarship Program: scholarships available to all students who have been accepted or who already attend a post-secondary institution. For more details, visit: <http://www.StayFitInCollege.org>.



Ashley Williams is the recipient of a door prize given at the Student-Parent Visibility Day held this past November.



Women's Center Seeks to Form Support Group for Women Student-Veterans

The UofL Women's Center's mission is to educate, advocate and build diverse communities. We are seeking UofL women student-veterans (Army/Navy/Air Force/Marines/Coast Guard) or women serving on Active Duty, Reserves, or the National Guard to help start an on-campus Women Veterans Support Group.

If you are interested and have ideas to share, email the Women's Center at womenctr@louisville.edu or contact Phyllis M. Webb at phyllis.webb@louisville.edu. You can also call the Women's Center at (502) 852-8976. Leave your name, contact information and the best time to reach you.

We hope to hear from you.

(Note: If you are calling from outside the Louisville, Ky., area, use "502" area code.)



UofL Women's Center Announces Jan. 25 Deadline for 2013 WHM Calendar Listing

The National Women's History Project Announces Theme for Women's History Month

by Phyllis M. Webb

The National Women's History project, a nonprofit, nonpartisan, educational organization committed to recognizing and celebrating the diverse and historic accomplishments of women by providing information and educational materials, has announced the theme for Women's History Month 2013.

The theme is **"Women Inspiring Innovation through Imagination: Celebrating Women in Science, Technology, Engineering and Mathematics."** The sub-heading was added to emphasize women in the fields of Science, Technology, Engineering, and Mathematics (STEM).

Congratulations to Debra Kolsrud of Johnstown, N.Y., who created the theme.

Source: *NWHP*, <http://www.nwhp.org>


In March of each year, the UofL Women's Center publishes a calendar of events listing "happenings" on campus and in the local community. The calendar is included in the spring issue of the **Women's Center News** and is a major source of information in the Louisville area. Individuals interested in activities and events concerning women's issues can find the calendar on the Women's Center web site, Facebook, and also posted in various areas on campus.

If your organization plans to sponsor a program concerning women's issues for

the month of March and would like to have it listed, please do one of the following:

1. Complete the Women's History Month events form online at <http://www.louisville.edu/womencenter> and save before sending;
2. download, complete and fax (with cover page) to the Attn: of Phyllis M. Webb to 852-4389, or
3. email the form to the UofL Women's Center service account, womenctr@louisville.edu.

The deadline to receive information is January 25, 2013. For more details, call (502) 852-8976.



Inspirational Quotes

Who or What Inspires You?

The UofL Women's Center is collecting "favorite words of wisdom" from our readers and supporters to be assembled for the upcoming spring edition and/or put on our Facebook page. Send us your favorite words of wisdom you received that inspired you, along with your name, whether you are a student, staff, faculty or community individual. (If you are a student, please include your hometown, major and classification (i.e. freshman).

Email information to the Women Center Service account, <http://www.womenctr@louisville.edu> by January 25, 2013.

CHALLENGES FACING THE STATE OF KENTUCKY

- > 5th highest poverty rate in the nation
- > Roughly 1 in 8 families and 1 in 4 children live in poverty.
- > Kentucky led the nation last year in deaths from child abuse and neglect.
- > Fastest rates of growth for our inmate population
- in America, largely driven by an epidemic drug abuse problem
- > We are one of the worst states in the nation for heart disease, lung disease and cancer.
- > Kentucky now has the highest mortality rate for cancer in America.
- > More citizens receiving Medicaid and health care for the poor and disabled than there are in the public school system and the higher education system combined
- > In Kentucky, for every 20 kids who enter the 9th grade, 3 graduate from college.

ALARMING STATISTICS FOR WOMEN

- > Recent rankings have put Kentucky among the worst states to be a woman. That is based on factors including political participation, employment and earnings, and health and well-being.
- > We are in the bottom third of women serving in the legislature where less than 11% are women.
- > Thirteen percent of our mayors are women; 8% of our county judges are women.
- > Kentucky ranks in the bottom third of the nation in: percentage of college educated women; women's business ownership, and the percentage of women above the poverty level.

(Source: Speech by Crit Luallen at the UofL Women's Center ECS Empowerment Luncheon, Nov. 14, 2012.)



SPOTLIGHT— Susan Hanley Duncan

by Robin R. Harris Brandeis School of Law



Susan Hanley Duncan

When Professor Susan Duncan took over as interim dean of the Brandeis School of Law on July 1, 2012, following the resignation of Dean Jim Chen, she began a two-year appointment that will require all of her considerable leadership talent and people skills. A 1991 graduate of the law school she now leads, Duncan pledged to foster a culture of participation, respect, and shared responsibility. So far, she has certainly lived up to that pledge. A new energy and sense of purpose are evident at the law school.

Many longtime law faculty and staff remember Susan Duncan from her days as a confident young law student—days that included honors and awards, as well as appointments to the School’s law review and the Brandeis Honor Society. She was encouraged to succeed by her mom and her aunts who “were a huge inspiration--they believed in me and encouraged me to follow my dreams.” She spent her summers during law school working as a law clerk at the Jefferson County Attorney’s Office. Her many accomplishments in the competitive environment of the law school and her experiences in the working world predicted the successful academic career that was to come.

After a year-and-a-half in private practice, Duncan returned to Brandeis in 1997 as an adjunct professor and received a full-time appointment in 2000. She has taught a wide range of

courses, including Basic Legal Skills, Negotiable Instruments, Criminal Law, Education Law, Restorative Justice, and Juvenile Justice. Her recent scholarship focuses on the use of restorative practices in schools, universities and in the workplace.

While teaching and writing, Duncan also found time for service. She credits the “Ursuline sisters who educated me and reinforced the values of leadership, service, reverence and community.” She has volunteered for Kentucky Refugee Ministries, the Healing Place, and Habitat for Humanity, and co-chaired the Citizens of Louisville Organized and United Together (CLOUT) Healthcare Research Planning Committee (addressing children’s healthcare issues). She has also worked with numerous UofL groups, including the Community Engagement Committee and the Great Places to Work

Advisory Committee. She even served as chair of the President’s Commission on the Status of Women during 2009-2011.

As she leads the law school through the next two years, Duncan has made clear her key initiatives: to reimagine the curriculum to meet the changing needs of the legal profession and the world’s global nature; to expand and integrate the law school with the university, the legal community, and the city; to attract and retain a broadly diverse and highly talented student body, faculty and staff; and to ensure that the law school maintains a strong physical and financial infrastructure. She will take her inspiration from the women who came before her. In her words, “My female colleagues at the law school inspired me. I had great women deans and women professors to mentor me and be role models for me.”

Lactation Stations on Campus

The University of Louisville has a number of lactation stations on campus for nursing mothers.

See the UofL Commission on the Status of Women web site, <http://www.louisville.edu/cosw>, for a complete listing. In addition, to learn more about laws enacted at the state level, visit the National Conference of State Legislatures, <http://www.ncsl.org> or the United States Breastfeeding organization, <http://www.usbreastfeeding.org>.

Pictured is the lactation room in the UofL Women’s Center. For more information, call 852-8976.

Photo courtesy of the UofL Women’s Center/Precious Turner



2012 NCAA Women's Volleyball National Championship Hosted in Louisville

by Amy Seng, Director of Student-Athlete Development, University of Louisville Athletics

For the very first time, the NCAA 2012 Division I Women's National Volleyball Championship was held in Louisville at the KFC YUM! Center, Dec. 13-15.

Between Nov. 25 and Dec. 8, a 64-team bracket was selected and condensed to four teams that advanced to compete in the national championship. The NCAA Women's Volleyball semifinal matches were played on Dec. 13 followed by the crowning of the national champion on Dec. 15.

Hosting the NCAA 2012 DI Women's National Volleyball Championship was not just exciting for UofL, but good news for the city as well. Louisville benefitted as being the volleyball hot spot in December, and in the spotlight as the championship welcomed big names and new talent to Derby City.

Before the championship, UofL launched a countdown by welcoming three-time Olympic gold medalist and former Stanford back-to-back NCAA National Champion Kerri Walsh Jennings to Louisville.

Jennings was the featured guest during an open house in November at the Brown and Williamson Club at Papa John's Cardinal Stadium. Over 300 fans attended the event, which included autographs, fan photos, and appearances by the 10th-ranked University of Louisville Volleyball team.

One of the 64 teams competing for the national title was the nationally ranked Louisville Cardinals. Their 2012 regular season conference champion title marked the team's fourth in eight years. The Cardinals earned a spot in the BIG EAST Championship every year since

joining the league in 2005. They made it to the final in six of the last seven BIG EAST Championship matches. The Cardinals have also won five BIG EAST Championship titles; the third most of any BIG EAST program.

Anne Kordes, a Louisville native and former UofL Cardinal volleyball standout, was named the head volleyball coach at the University of Louisville in January of 2011. She is the sixth head coach in the program's history.

Kordes, like one-fourth of our current volleyball roster, attended high school locally in Louisville.

Under Kordes,

the Cardinals are presently 25-3, ranked No. 10 in the AVCA rankings, and the BIG EAST Regular Season Champions. This means the Cardinals went into the conference as the No. 1 seed.

The weekend also included youth clinics, the AVCA National Coaches' Convention, and many fun events for fans. For more information on the NCAA Division I Women's Volleyball Championship, visit www.ncaa.com/volleyball.



Wrap-up of Semester Activities and Events

by Mary Alice Endicott, Junior English Major

The fall semester has been full of events and opportunities. Recently, I had the opportunity to attend the **Women 4 Women Luncheon**. As a new student worker in the Women's Center, it was amazing to see women from all different walks of life sharing ideas and experiences—especially the advice of the featured speaker, author and financial editor for NBC, Jean Chatzky. She gave tips on how to set achievable financial goals, and proposed

that the ever-elusive “balance” between career and family life may never be stable. It is not that successful women must sacrifice some of one or the other in order to have both, but that trying to achieve a perfect balance between the two might only increase stress. She further stated, “If you spend all of your time trying to anticipate every problem that you may face in work or in life, what time is left over to enjoy things?”

During a time of extreme anti-women rhetoric from politicians, **Take Back the Night** (TBTN) offered students and community members the opportunity to show solidarity for women and for women to share their own stories and experiences. Some voices were loud, some were tearful—but they were all passionate and genuine. TBTN empowers women by giving them a platform for their voices, but participation in events like this

is also important in order to keep a dialogue going about rape culture on campuses and violence against women. Men also have a stake in these issues because they disrupt the ability of men to have healthy, meaningful relationships with women. When you hear about an event addressing rape or domestic violence, participate and show solidarity for all the amazing women in our lives.

In addition to these wonderful events, I attended a discussion at the School of Law with a panel of community and campus members relating to **Mayor Greg Fischer's Task Force** which was organized as a response to the recent fatal shootings in West Louisville. The panel consisted of Susan Duncan, Dean of the Law School; Dr. LaQuandra Nesbitt, Professor at the School of Public Health; Judge Brian Edwards; and Christopher 2X, antiviolence advocate. It was moderated by Ben Richmond, President/CEO, Louisville Urban League.

Mayor Fischer sought to organize the task force

in response to violence disproportionately affecting African Americans in the west end. Panelists discussed many issues regarding the social and historical backdrop where the violence is occurring. Christopher 2X reminded the audience that "it is not within our power to stop every aggression" and that change in individuals comes from within. He also emphasized how individuals in the community can change, and the fact that some resources in the community are not known or broadcasted to community members. Other panel members pointed out that systemic changes need to be made in order to decrease the violence. Dr. Nesbitt also responded to the question of why the rest of Louisville should care by citing high costs of

gunshot wound medical care, the dampening of business because businesses are scared to move to the area, and joblessness decreasing the tax revenue. The group also discussed how young people doing the right thing don't get nearly as much attention as stories about violence, and the fact that most



The west entrance to the Belknap Campus off Third & Eastern Parkway. Photo Courtesy Nick Dawson, MastPics.

children don't act out violently. Christopher 2X brought up the fact that social networking sites such as Facebook are used to communicate threats and instill fear in the community. The panel was open for questions after the talk, and the audience was encouraged to visit www.LUL.org and call local councilpersons to find out about community programs.

The conversation started at this event was so successful that a follow-up event "**Stopping the Violence: How Can We Help?**" was held on Nov. 20 with a different panel. The panel included Dana Jackson, Executive Director of the Network Center for Community Change (NC3); UofL graduate and Youth Advocate, Kristen Williams; and Anthony D. Smith, Director of Network Organizing, Network Center for Community Change, Youth Opportunities Unlimited Program. The program was moderated by President of the Black Law Students Association, Aaron Marcus. Jackson emphasized the importance of grassroots organizing which her organization utilizes, and

Williams made a powerful statement about individuals participating in social change: "If you're sitting in school and learning about social justice, you have to apply it." There were many different opinions voiced, including systematic disenfranchisement and the fact that contractors working east of Ninth Street get favors and perks that are not available to those building in the west end. The panelists also discussed how diversity is vital to groups moving for social change.

I also had the opportunity to help out with the **Student Parent Association clothing exchange/visibility day**. It was good to see the amount and quality of the donations, and no one left empty-handed. As the semester draws to an end, I look forward to the holiday season and also to all of the events and opportunities of the New Year; 2013's planning for the Kentucky Women's Book Festival is already exciting. I wish everyone a restorative holiday break so we can approach coming-year tasks with renewed vigor.

(Mary Alice Endicott is a student worker in the UofL Women's Center)



The front entrance to the Administrative Annex Building, where the UofL Women's Center is housed. The building is located to the right of the west Information Center. Photo courtesy of the UofL Women's Center/Precious Turner

*Educating, Advocating,
and Building Diverse
Communities*

The Women's Center News

A publication of the Women's Center at the University of Louisville Editorial Board: Valerie Casey, Brenda D. Gunn, Robin Harris, Prafula P. Sheth, and Phyllis Webb. The Women's Center News is a free, quarterly newsletter.

It is available online at www.louisville.edu/womenscenter. To receive a hard copy of the newsletter or to sign up for email announcements, write to: Women's Center, University of Louisville, Louisville, KY 40292; 502-852-8976; or send an email to: womenctr@louisville.edu.

The University of Louisville is an equal opportunity institution.

This publication was prepared by the University of Louisville with state funds KRS 57.375.

