

# The Women's Center News

Spring 2011

Check out the Women's Center at: <http://www.louisville.edu/womenscenter>

Volume 18, Issue 3

## An Interview with Lilly Ledbetter, Gender Equity and Fair Pay Activist

by Phyllis M. Webb, Women's Center

Lilly Ledbetter spoke at the University of Louisville on January 25 in conjunction with her keynote address at the Louisville Metro Human Relations Commission's 15th Annual Race and Relations Conference. The interview took place prior to her talk in the Chao Auditorium of the Ekstrom Library. U of L's College of Arts & Sciences and its Office of International, Diversity, and Outreach Programs sponsored her visit.

On the cold, brisk afternoon of January 25, Robin R. Harris of the University of Louisville's Law Library and I met in the Rare Books collection area of the Ekstrom Library to await the arrival of Lilly Ledbetter, a champion of gender pay equity who is still the subject of various newspaper and magazine articles, as well as many radio and TV talk shows. I had a chance to meet her briefly on her arrival at a campus reception the night before in the Hite Art Gallery, where she addressed labor unions, community activists, political folks and various organizations and groups.

She arrived with a warm smile and cordial southern charm, eager to tell us about the tireless work she had done to publicize her story throughout the country. She shared copies of numerous articles and interviews, including those in publications such as *The New Yorker*, *The Washington Lawyer*, *O--The Oprah Magazine*, *AARP--The Magazine*, and *AAUW Outlook*. She talked about dancing with President Obama, making Oprah's first ever "Power List" (August 2009), and winning a 2010 "Inspire" award from AARP (along with Clint Eastwood and Raquel Welch). She talked about the many people she met



— Photo by Amy Purcell

*Lilly Ledbetter discusses her work on pay equity with Robin R. Harris, U of L Law School (left), and Phyllis M. Webb, Women's Center (right), prior to her talk in the Ekstrom Library on January 25, 2011.*

in her travels. She spoke excitedly about traveling to Rome, Italy, where she met the Italian ministers who gave her a statue, which she calls her "claim to fame." She recounted her travels campaigning for then-Senator Barack Obama during his run for president, including her appearance at the Democratic National Convention. Ledbetter spoke fondly of President and Mrs. Obama whom she considers "real special folk," and had kind words to say about Vice President Joe Biden and his wife, Jill.

Lilly, as she prefers to be called, will turn 73 in April, but seems far younger. She spoke proudly of her son and daughter and of her 12-year-old grandson, who told his teacher and classmates his grandmother's story. She also talked about her lawyer, John Goldfarb, who worked so hard and helped her tremendously in her long court battle for pay equity. "I never paid him a dime."

Lilly considers her Alabama home a museum of sorts, as it houses the many newspaper clippings, magazine articles and memorabilia depicting her in the role of women's rights champion. A book about Lilly's life is currently in the works. "Grace and Grit: The Lilly Ledbetter Story" will be published by Random House in 2012. Author Lanier Isom wrote a popular article about Lilly a few years ago, and the two are now collaborating on the book. A movie deal is in negotiations, but details are not yet available. And who would Lilly most like to see play her in the movie? Meryl Streep, of course! "She can do just about anything!"

Lilly's "all-time lifelong dream" of meeting U.S. Supreme Court Justice Ruth Bader Ginsburg came true a few

*(continued on next page)*

Lilly Ledbetter, a production supervisor at a Goodyear tire plant in Alabama, filed an equal-pay lawsuit under Title VII of the Civil Rights Act of 1964, six months before early retirement in 1998. She had discovered a large gap between her salary and that of her male colleagues going back several years. She won the case and was awarded \$360,000 in back pay, but Goodyear appealed the case all the way to the U.S. Supreme Court. The 2007 ruling rejected the award in back pay. A 5 to 4 majority went against Ledbetter on the grounds that she had not sued in time.

The discrepancy cost Ledbetter lost wages and also lowered her retirement earnings because her Social Security and 401(k) contributions were based on her salary. But the Supreme Court ruled that Ledbetter's case was not allowed under the 1964 Civil Rights Act because the statute of limitations on claims was 180 days after the alleged discrimination took place.

(Source: The Washington Post, 1/23/09)

# Wages: The Disparity Continues

According to the National Committee on Pay Equity (NCPA), Equal Pay Day 2011 is Tuesday, April 12. “This date symbolizes how far into 2011 women must work to earn what men earned in 2010.” The date is a measure of the “wage gap” – i.e.–the pay differential between the median annual salaries of female workers and white male workers. The gap exists for women across all occupations and income levels, regardless of race and ethnicity, and is most severe for women of color. Thus, using data from the U.S. Bureau of Labor Statistics and the 2000 Census, NCPA calculates: “In one year, the average black woman earns approximately \$12,000 less than the average white man... [that is, she earns only 64% of his salary]... Over a 35-year ca-



Mary Karen Powers  
Director, Women's Center

reer... a difference of \$420,000!... [Meanwhile, the] median full-time earnings of female Hispanic workers [are] \$17,837 less than those of their white male counterparts... [that is, these women earn only 52% of a white male's salary]... Over a 30-year career, a difference of \$510,000"! In addition, using census data released in 2010, the American Association of University Women calculates that female college graduates in Kentucky earn a median wage of \$45,000 compared to a median wage of \$60,000 earned by their male counterparts. Thus, female college graduates in the Commonwealth earn only 75% of the wages earned by their male counterparts. Elsewhere in this newsletter, pay equity heroine Lilly Ledbetter challenges us to understand that the gap impacts not only women's salaries during our working lives, but also the circumstances of our retirement. That is, the wage gap impacts social security and pension benefits, as well as the employer's contribution to employee retirement accounts.

Equal Pay Day challenges us to remember women's history is living history, and we have work to do!

## Interview with Lilly Ledbetter *(continued from page 1)*

months ago. Lilly considers Justice Ginsburg her “inspiration” because she feels Justice Ginsburg truly understands that “men don't understand what it's like in the real world.” Ginsburg encouraged Congress to “pick up the ball” on the Equal Pay legislation that had seen so many changes and amendments since the initial claim.

Lilly strongly encourages women to become involved in organizations such as the American Association of University Women, the National Women's Law Center, and the ACLU (American Civil Liberties Union). These organizations played a crucial role in her fight, and she believes that women should mobilize. “It's very important. Everyone needs to get involved.” She spoke highly of Rutgers University where young women are taught how to get involved in politics, and also of Auburn University which runs an excellent Women's Leadership Program. Lilly finds that many people are unaware of unjust situations that exist, such as pay disparity, so conferences such as the Annual Race and Relations Conference in Louisville takes on added significance.

Lilly Ledbetter spent almost 20 years at Goodyear, so her retirement income and social security income should fairly reflect her work. Sadly, that is not the case. Due to the lower pay she received while working, her current retirement income also lags behind those of her male counterparts. Widowed,

Ledbetter lives in Jacksonville, Ala., on a small pension and like many Americans worries about losing her home. While she may never see restitution from Goodyear, she has seen the day when her own daughter and grandchildren can demand fair pay in the workplace.

(Source: Lahle Wolde, Lahle's Women in Business Blog)

In the closing of our interview she said “A lot of life depends on ‘happiness.’ Find something that you like to do.” Her tenacity, perseverance and strength finally paid off when President Obama signed into law the Lilly Ledbetter Fair Pay Act Bill on January 29, 2009.

*Note: Robin R. Harris, School of Law, also contributed to this article.*

In signing the Lilly Ledbetter Fair Pay Act bill, President Obama said at the briefing:

“Signing this bill will affect more than just women, but families as well.”

“Lilly knows this story isn't about her. It's the story of women across this country still earning just 78 cents for every dollar men earn—women of color even less—which means that today, in the year 2009, countless women are still losing thousands of dollars in salary, income and retirement savings over the course of a lifetime.

So in signing this bill, I intend to send a clear message. That making our economy work means making sure it works for everyone. That there are no second-class citizens in our workplaces, and that it's not just unfair and illegal—but bad business—to pay someone less because of their gender, age, race, ethnicity, religion or disability. And that justice isn't about some abstract legal theory, or footnote in a casebook—it's about how our laws affect the daily realities of people's lives: their ability to make a living and care for their families and achieve their goals.”

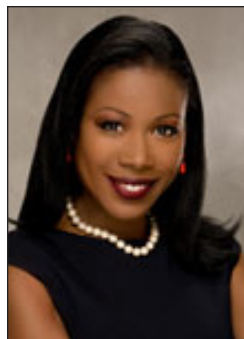


# 2011 Minx Auerbach Lecture to Feature Isabel Wilkerson

by Jan Rayburn, Administrative Specialist  
Women's & Gender Studies

The University of Louisville Women's & Gender Studies Department proudly presents Isabel Wilkerson for the 2011 Minx Auerbach Lecture. The lecture, book signing and reception will be on Thursday, March 24, at 6 p.m., at the Speed Art Museum Auditorium adjacent to the U of L campus. She will speak on gender in her book "The Warmth of Other Suns." The event is free and open to the public.

Isabel Wilkerson, who spent most of her career as a national correspondent and bureau chief at The New York Times, is the first black woman to win a Pulitzer Prize in the history of American journalism, and was the first black American to win for individual reporting. She has also won the George Polk Award and a John Simon Guggenheim Fellowship. She has lectured on narrative at the Nieman Foundation at Harvard University and has served as Ferris Professor of Journalism at Princeton University, and as the James M. Cox Jr. Professor of Journalism at Emory University. She is currently Professor of Journalism and Director of Narrative Nonfiction at Boston University. During the Great Migration, her parents journeyed from Georgia and southern Virginia to Washington, D.C., where she was born and reared. Inspired by her own parents' migration, she devoted 15 years to the research and writing of this book. She interviewed more than 1,200 people, unearthed archival works and gathered the voices of the famous and the unknown to tell the epic story of the relocation of an entire people in "The Warmth of Other Suns."



Isabel Wilkerson



Codi Singleton, a work study student in the Women's Center is shown with the "Wall of Shame" display she created as part of the office's co-sponsorship of U of L's BABA (Body Awareness, Body Appreciation) Week.

## Mark your calendar: Saturday, May 21 5<sup>th</sup> Annual Kentucky Women's Book Festival, William F. Ekstrom Library, U of L Belknap Campus, 9 a.m-4 p.m.

The Kentucky Women's Book Festival is designed to bring together writers and readers from Kentucky and adjacent states interested in writings by and about Kentucky Women authors. Featured keynote luncheon speaker will be filmmaker and author Tania James. Her debut novel, *Atlas of Unknowns*, is about sisterhood and deals with the pressures of cultural experiences played out in family life. Sponsored in part by the U of L Women's Center, University Libraries, the U of L Commission on Diversity & Racial Equality (CODRE), the Commission on the Status of Women (COSW), Class Act Federal Credit Union, and Women Who Write, Inc.

The festival is free; however, there is a cost to attend the luncheon. For KWBF updates, visit, <http://www.louisville.edu/womenscenter/kwbf> or call the Women's Center, 852-8976 to register.

# TRIO Student Support Services

by Jacqueline Ford, Student Development Specialist  
TRIO Student Support Services, Counseling Center

University of Louisville's newly-established TRIO Student Support Services (SSS) program is excited to work with U of L's Women's Center in an effort to empower women to reach their greatest potential as students, mothers, professionals and leaders.

Who are we?

TRIO SSS is a comprehensive, federally-funded program. The goal is to further U of L's mission of educational excellence and equal access by providing first generation college students with limited income and/or disabilities a multiplicity of academic and personal support services. Included in the services are study skills development to achieve academic success, tutoring to master course content, and intensive academic and personal advisement to build confidence and promote student success. The program also offers a limited amount of grant aid to award to students.

SSS provides assistance at every stage of undergraduate education, whether deciding which courses to take in the first semester or wondering how to prepare for graduation and the continuation of studies in Graduate school. The main purpose is to increase the retention and graduation rates of students by offering support services in a nurturing environment. If a student is committed to achieving academic goals, then there are great benefits in becoming a part of U of L's SSS program.

SSS is located in the Counseling Center between the Houchens Building and the Student Activities Center.

For additional information or to obtain an application, please visit the website at [www.Louisville.edu/trio](http://www.Louisville.edu/trio); call 852-1406, or send an email to [trio@louisville.edu](mailto:trio@louisville.edu). We look forward to hearing from you soon!

Spread the word!

# Great Places to Work

by Mary Karen Powers, Director, Women's Center

In November 2009, Provost Shirley Willihnganz commissioned The Great Places to Work Committee, charged with "identify[ing] ways to make UofL a better workplace." Subcommittees focus on the areas of "health and wellness, family friendly policies, campus climate, professional development and rewards." Melissa Laning, 2009 Faculty Senate Chair, noted at the time that GPTW "reflects a strategic commitment by the university administration not only to recruitment of new talent, but to retaining the excellent faculty and staff who are already here.... Investment in quality-of-work-life issues will produce benefits for everyone at the university." More than 100 faculty and staff serve on GPTW.

Women's Center Director Mary Karen Powers serves on the Family Friendly Work Places Subcommittee. Over the past year, the subcommittee has made a number of policy recommendations to the GPTW Steering Committee. These include: extending the tenure clock due to childbearing, dependent care, or extenuating circumstances; increasing paid leave for child-bearing/adoption for faculty and staff from 3 to 6 weeks; and adjusting the timing of UofL fall break to coincide with the Monday and Tuesday that JCPS does not hold classes. Currently the committee is focusing on two issues: creating a document to share some of the flexible work schedules which have already been implemented across the university; and drafting a part-time professional option policy for tenure-stream faculty.

The subcommittee's recommendations regarding the tenure clock, and increasing paid parental to six weeks have already been implemented by the university. The recommendation regarding the timing of fall break is more problematic because UofL's academic schedule is not compatible with the JCPS schedule. However, in view of the large number of university faculty, staff, and students, who are parents of JCPS students, university administration has agreed to continue examining the proposal.

## Women 4 Women Makeover Event



Pictured above are Women 4 Women Student Chapter members and volunteers at the February 2011 Makeover Event at Wayside Mission.



Special Thanks to all the University of Louisville and community volunteers who assisted in the preparation and distribution of items at the event.

# Scholarship Opportunities

With dwindling state and federal aid, lower endowments and drops in fund-raising, scholarship monies are still available for U of L students and others.

Listed below is a partial listing of the hundreds available through organizations and agencies. (Please note that scholarships listed are not endorsed by the U of L Women's Center. The listing is for informational purposes only.)



- **Talbots Women's Scholarship Fund**, for women seeking an undergraduate degree from an accredited two- or four-year college or university, or vocational-technical school. There are six \$10,000 scholarships and 60 \$1,000 scholarships. Awards are based on financial need and previous achievements for women who earned their high school diploma or GED at least 10 years ago.
- **Jeannette Rankin Foundation Scholarships**, for females age 35 or older who are enrolled in or accepted to a regionally or ACICS accredited school, or are pursuing a technical or vocational education. The scholarship is need-based and students must be U.S. citizens.

- **Selected Professions Fellowships**—sponsored by the **American Association of University Women (AAUW)**, are given to women who intend to pursue a full-time course of study at accredited U.S. institutions. Students must be pursuing a degree where women's participation has been traditionally low, like architecture, computer science, engineering, or math. Applicants must be U.S. citizens or permanent residents.
- **NWSA Women of Color Caucus Awards**, will award four \$500 scholarships to candidates in the following categories: graduate students of African descent, graduate students of Latina descent, graduate students of Asian/Asian-American/Pacific Islander/Arab/Middle East Asian descent, and graduate students of African Native American/American Indian/Alaskan Native descent.
- **Dorothy Harris Endowed Scholarship**, for female graduate students pursuing a full-time course of study at an accredited graduate school and majoring in a sports related field. Acceptable majors include sports psychology, physical education, sports administration, sports sociology, and kinesiology. The awards are \$1,500 to \$3,000.
- **College Scholarships Foundation Women's Scholarship**, gives \$1,000 scholarships to female students each year. Students must be U.S. citizens, have at least a 3.0 GPA, and be currently enrolled.

(Source: "A List of 50 Scholarships for Women" at <http://www.guidetoonlineschools.com/financial-aid/scholarships/women>)

U of L's Commission on Diversity & Racial Equality (CODRE) has grant opportunities for both graduate and undergraduate students. This request for funding initiative will be focused on support of U of L undergraduate or graduate student research that targets populations which are the focus of the commission—diverse, underserved, under-represented and/or vulnerable populations. For specific deadline dates and/or more details, visit the CODRE web site at <http://www.louisville.edu/codre>

## Going Green

Due to budget cuts – and the desire to go green – we are working to use our resources wisely.

Please sign up today for the electronic version of *The Women's Center News* by going to the Women's Center service account at [womenctr@louisville.edu](mailto:womenctr@louisville.edu). We may have to discontinue hard copy printing . . . and we'd hate to lose our connection with you. We welcome your comments and suggestions.

Write to us at: Women's Center  
#4 Administrative Annex Bldg.  
University of Louisville  
Louisville, Kentucky 40292

UNIVERSITY OF  
**LOUISVILLE**®



WOMEN'S CENTER

## The Women's Center News

A publication of the Women's Center at the University of Louisville

Editorial Board: Valerie Casey, Brenda D. Gunn,  
Robin Harris, Kathy Pendleton,  
Mary Karen Powers, and Phyllis Webb.

*The Women's Center News* is a free, quarterly newsletter. It is available on-line at [www.louisville.edu/womenctr](http://www.louisville.edu/womenctr).

To receive a hard copy of the newsletter or to sign up for email announcements, contact us at: Women's Center, University of Louisville, Louisville, KY 40292; 502-852-8976; or [womenctr@louisville.edu](mailto:womenctr@louisville.edu).

The University of Louisville is an equal opportunity institution.

This publication was prepared by the University of Louisville and printed with state funds KRS 57.375.

# 2011 Women's History Month Calendar

## March 2011

National Theme: "Our History is Our Strength" – Source: The National Women History Project, <http://www.nwhp.org>

This listing of campus and community events linked to the University of Louisville is provided by the U of L Women's Center. **Unless noted**, all events are free, open to the public, and take place on U of L's Belknap campus. (Dates are subject to change without written notice. For more information, contact the person listed with each event.)

Thanks to all the event sponsors for their commitment to women's equality.

### \* *All Month (starting, Tuesday, March 1, and continuing through Thursday, March 31)*

#### \*\*"Converging In-Sight: Photographs of Pilgrimages from Four Continents" Exhibit, William F. Ekstrom Library, main floor (Media Resources area), regular library hours

For 20 years, photographers Carole Elchert, Phyllis Banis and Andrea Van Vorhis have photographed the land and cultural aspects of the American West, Asia, Europe and Africa. They bring together images from their separate journeys into this joint effort.

This exhibit concludes with the artists presenting a free, public talk Friday, April 1, at noon in the library's Chao Auditorium.

*(This is a Women's History Month event sponsored by the Women's Center, Ekstrom Library, and the Women 4 Women student chapter.)*

#### \*Women's History Month Display including the permanent "Kentucky Women Remembered" Exhibit, Kentucky State Capitol, Frankfort, Ky., Monday-Friday, 8 a.m.-4:30 p.m.

The "Kentucky Women Remembered" exhibit honors Kentucky women who have made a difference in Kentucky history. The Kentucky Commission on Women will profile a woman from the KWR Exhibit each day in March on its listserv. (If you would like to subscribe to the listserv, send an e-mail request to [Kentuckywomen@listserv.ky.gov](mailto:Kentuckywomen@listserv.ky.gov) or Glenda McCoy at [Glenda.mccoy@ky.gov](mailto:Glenda.mccoy@ky.gov).)

Eleanor Jordan, Director of the Kentucky Commission on Women, will also speak at various Women's History Month celebrations during the month. In addition, the Commission will announce the names of those invited to serve on the Kentucky Women's History Project Consortium. For more information, visit: <http://www.women.ky.gov/> or call (502) 564-2611.

#### \*Family Scholar House "Sheroes" Project

As Women's History Month is celebrated, it is probable that a great number of women have one or more sheroes to look to as formative in the women's movement and as current inspiration. The single mothers at Family Scholar House could use your thoughts on these wonderful women and their impact.

During March, you are invited to write a note identifying one of your sheroes and explaining her significance to you. The goal is to get 100 notes so that every resident who is a single mother and college student finds herself with a new role model whose story she can appreciate and share with others. Please join in celebrating special women of history by sharing their stories.

Send notes to: Family Scholar House, ATTN: Sheroes Project, 403 Reg Smith Circle, Louisville, KY 40208. For questions or more information, call Jenny at (502) 584-8090.

#### \*Pre-Spring Break Goodies

The staff of the U of L PEACC (Prevention, Education & Advocacy on Campus and in the Community) will distribute freebies all month and present discussions about safety and healthy decision-making. To schedule a presentation for your organization or group, e-mail Sharon Larue at [sdlaru01@louisville.edu](mailto:sdlaru01@louisville.edu) or call 852-2663 for more details.

## Tuesday, March 1

### Legal Aid Society Foreclosure Clinic, Legal Aid Society Office, 416 West Muhammad Ali Blvd., 11 a.m.

Attorneys will be on hand to answer questions about foreclosures and provide alternatives to foreclosure. (Note: The Foreclosure Clinic will be held every Tuesday in March on these dates: March 8, 15, 22, and 29 at 11 a.m.) A reservation for each clinic is required. Call 584-1254 to register and find out about other clinics offered by Legal Aid.

## Tuesday, March 1

### The 5<sup>TH</sup> Annual International Film Series continues with these two films, Ekstrom Library (Chao Auditorium), 6 p.m.-9 p.m.

"Amelie" (2001) Film (While helping others fix their own lives, a young waitress in Paris discovers that her own life could use some mending.)

## Wednesday, March 2

### "Finzan" (1990) Film

(In a small village in Mali, two women risk exile and their lives when they rebel against tradition in a patriarchal society.)

Both films are sponsored by The Institute for Intercultural Communication and the Department of Communication. Light refreshments will be provided and speakers will discuss the films following the screening. For more information, contact Dr. Margaret D'Silva, [dsilva@louisville.edu](mailto:dsilva@louisville.edu) or the Dept. of Communications, 852-6976.

## Wednesday, March 2

### "Let's Talk Lunch," Cultural Center (multipurpose room), 12 p.m.-1 p.m.

An informal lunch discussion designed to bring staff, faculty, students, and community members together in a collegial and safe environment to discuss issues of importance to the community. "Let's Talk: Sisterhood in 2011" will focus on sisterhood, particularly in the Black community. Join the dialogue for a discussion on support and uplift. For more details, e-mail Lanie Lopez, [lyorte01@louisville.edu](mailto:lyorte01@louisville.edu).

## Thursday, March 3

### Legal Aid Society Foreclosure Clinic, Legal Aid Society Office, 416 West Muhammad Ali Blvd., 4 p.m.

Attorneys will be on hand to answer questions about foreclosures and provide alternatives to foreclosures. (Note: The Foreclosure Clinic will be held every Thursday in March on these dates: March 10, 17, 24 and 31 at 4 p.m.) A reservation is required for each clinic. Call 584-1254 to register and find out about other clinics.

## Thursday, March 3

### Lunch and Lecture Series—Meet the Professor, U of L University Club & Alumni Center, 12 p.m.

In this session, Professor Nefertiti Burton's topic will be "Staging Sacred Literature: Yoruba Praise Poetry as a Source for Theatrical Performance." Burton is a professor in the Dept. of Theatre Arts, whose teaching, directing, writing and acting has focused on the works of Black playwrights throughout the African Diaspora. She will present her research and playwriting that draws on the ancient Odu Ifa of the Yoruba people of Nigeria. For reservations and admission, contact Janna Tajibaeva, [janna@louisville.edu](mailto:janna@louisville.edu), or call 852-2247. Sponsored by U of L's College of Arts & Sciences and the Liberal Studies Project.

## Thursday, March 3

**Women's Wellness Class, Marshall Women's Health & Education Center, Norton Suburban Hospital, 4121 Dutchman's Lane, 6 p.m.-8 p.m.**

Class: "Fast, Fresh and Green: Add Mouthwatering, Raw Foods to Your Meals." Refreshments will be provided. Registration: call 899-6300.

## Thursday, March 3 – Friday, March 4

**Perinatal Mood Disorders Components of Care Training Conference, Unitarian Universalist Church of Lexington (Ky.), 3564 Clays Mill Road.**

This two-day certification course in the assessment and treatment of Perinatal Mood Disorders is designed for maternal health care providers, including nurses, physicians, social workers, social support providers, and mental health professionals. This is the standard certification course of Postpartum Support International. Faculty are Birdie Gunyon Meyer, RN, MA; Wendy Davis, PhD; and Sheila Ward, CNM, PMHNP.

The conference is presented by Postpartum Support International and Postpartum Support Kentuckiana, and sponsored by the Norton Healthcare Foundation. For registration costs and more details, go to <http://uofl.me/perinatal11> or contact Wendy Davis, PhD, PSI Program Director, <http://www.postpartum.net>; telephone, (503)246-0941.

## Thursday, March 3 – Saturday, March 5

**Women 4 Women Student Chapter Film Series, Student Activities Center (SAC) Floyd Theatre, showings at 5 p.m. and 8 p.m. for each film.**

**Thursday, March 3** – "The Girl with the Dragon Tattoo;"

**Friday, March 4** – "The Girl Who Played with Fire;" and

**Saturday, March 5** – "The Girl Who Kicked the Hornet's Nest."

For more details, contact Gabrielle B. Maxedon at [g0maxe01@louisville.edu](mailto:g0maxe01@louisville.edu).

## Friday, March 4

**Dress in Blue Day (all day)**

March is National Colorectal Cancer Awareness Month and all are encouraged to wear blue in support of the campaign to increase colon cancer awareness. Sponsored by the Kentucky Cancer Program, Kentucky African Americans Against Cancer, and the Harriett B. Porter Endowment of the Brown Cancer Center. For more details about the Dress in Blue Campaign, visit <http://www.dressinblueday.com>, or contact Virginia Bradford, RN, at [vabrad01@louisville.edu](mailto:vabrad01@louisville.edu), or 852-6318.

## Saturday, March 5

**2011 MLWPC (Metropolitan Louisville Women's Political Caucus) Political Skills Campaign School, Holiday Inn Hurstbourne Parkway, 1325 South Hurstbourne Lane, 8 a.m.-2 p.m.**

The theme of this year's Campaign School is "Women Leaders: Today and Tomorrow." Keynote speakers will include Louisville Metro Mayor Greg Fischer, State Auditor Crit Luallen, former State Senator Georgia Powers (*invited*), Campaign Organizer Martha McKenna, as well as national and state political consultants.

Carolyn Shaw Scholarships are available. For conference fees and more details on registration or other details, contact Bobbi Jo Weber at (502) 448-1625 or [bobbijo@wesselininsurance.com](mailto:bobbijo@wesselininsurance.com). You can also visit <http://www.MLWPC.org>.

## Tuesday, March 8

**International Women's Day, SAC (Atrium), 11 a.m.-1 p.m., & U of L Red Barn, 7 p.m.-9 p.m. See specifics below.**

IWD is a global day celebrating the economic, political and social achievements of women past, present and future. In some places like China, Russia, Vietnam and Bulgaria, IWD is a national holiday. More information on IWD can be found at <http://www.internationalwomensday.com/about.asp>. This is the 100<sup>th</sup> anniversary celebration of the achievements of women past, present and future. Honor a strong woman in your life.

Booths and pampering services in the Student Activities Center (SAC) Atrium, 11 a.m.-1 p.m.; music, poetry, booths and food in the U of L Red Barn, 7 p.m.-9 p.m. For more information, e-mail Amber Duke, [agduke01@louisville.edu](mailto:agduke01@louisville.edu) or Sharon Larue, [sdlaru01@louisville.edu](mailto:sdlaru01@louisville.edu).

## Tuesday, March 8

**Women's Wellness Class, Marshall Women's Health & Education Center, Norton Suburban Hospital, 3121 Dutchman's Lane, 6 p.m.-8 p.m.**

Class: "Multiple Sclerosis Town Hall Meeting: Navigate Your Care". Panel discussion with medical professionals. To register, call 899-6300.

## Wednesday, March 9

**MOM (Modern Outlook on Motherhood) Support Group Meeting, #300, Bingham Humanities Bldg., 1:15p.m. – 2:15 p.m.**

The Women's Center MOM Support Group works to provide resources, information and genuine support for student mothers and to empower them so they can effectively meet the needs of their personal, academic and professional lives. Special guests and topics to be announced. Bring your lunch; snacks and drinks provided. If you are interested in attending, contact Phyllis M. Webb, [phyllis.webb@louisville.edu](mailto:phyllis.webb@louisville.edu), or Brittney D. Smith, [bdsmit08@louisville.edu](mailto:bdsmit08@louisville.edu) at least a couple days in advance or call 852-8976 for more details. U of L student parents can visit the MOMS Support Group page at <http://www.louisville.edu/womenscenter/moms-support-group> for more information and to also complete the MOMS Support Group questionnaire.

## Wednesday, March 9

**Women 4 Women Student Chapter Meeting, University Club (Alumni Board Room), 4 p.m.**

The Women 4 Women Student Chapter's mission is to improve the health and economic well-being of women and girls by increasing awareness, expanding resources and creating solutions to strengthen our University of Louisville community. For more information, contact Gabrielle B. Maxedon, president, at [g0maxe01@louisville.edu](mailto:g0maxe01@louisville.edu).

## Thursday, March 10 – Friday, March 11

**"Pathways to Freedom: Kentucky and the Civil War" Conference, University of Louisville & Frazier International History Museum, 829 West Main Street, various times**

At the beginning of the sesquicentennial commemorating the Civil War, U of L College of Arts & Sciences and its Arts and Cultural Partnership Initiative is hosting a two-day scholar and community symposium. This year's focus will be the war in Kentucky as it and the nation struggled toward a new birth of freedom. Delving into the pathways to "freedom" will be explored. Special guest presenter will be Dr. Ira Berlin, University of Maryland. For specific details, schedule, registration and cost, e-mail Janna Tajibaeva, [janna@louisville.edu](mailto:janna@louisville.edu), 852-2247, or contact Dr. J. Blaine Hudson, [jbhuds01@louisville.edu](mailto:jbhuds01@louisville.edu); 852-2234.

## **Thursday, March 10 – Saturday, March 12**

**National Conference on the Black Family in America, Hilton Garden Inn, 2735 Crittenden Drive. (See schedule for list of times.)**

The 38<sup>th</sup> Annual Black Family Conference includes various speakers who will address the theme, “The Year of the Child: Best Practices for Shaping Our Future Leaders.” There will be a special salute to Dr. Joseph H. McMillan, a founder of the conference; plenary, concurrent sessions, and a family expo. For registration information and more details, visit this web site, <http://www.louisville.edu/culturalcenter/bfc>.

## **Saturday, March 12**

**Family Entertainment Movie, “The Great Debaters,” The Kentucky Center for African American Heritage, 1701 West Muhammad Ali Blvd., 12 p.m.-2 p.m.**

This film is one in a series of family entertainment films presented by U of L’s College of Arts & Sciences’ Office of Outreach Programs, along with The Kentucky Center for African American Heritage. Children must be accompanied by an adult. Bring your lunch. (Additional Saturday films will also be shown on March 19, March 26 and April 2.) For more details on the films to be shown, contact Reginald Meeks, [Reginald.meeks@louisville.edu](mailto:Reginald.meeks@louisville.edu) or call 852-3040.

## **Tuesday, March 15**

**Authors at the Library Program, Louisville Free Public Library, 301 York Street, 7 p.m.**

This ‘Authors at the Library’ Program will feature Emmy Award-winning TV host and New York Times best-selling author Suze Orman. She will discuss her new book, *The Money Class: Learn to Create Your New American Dream*, in which she calls for a serious reconsideration of the American dream--what promise it still holds, what aspects are in need of revision, and how it must be refashioned to fit our lives. Free event but tickets are required; order online at <http://www.lfpl.org/tickets/author-tickets.asp> or call 574-1644.

## **Thursday, March 17**

**Special Heart Health Class: Circle of Hearts, Norton Audubon Hospital, 1 Audubon Plaza Drive, 6 p.m.-8 p.m.**

Circle of Hearts is a free series of classes dedicated to educating women about heart disease. Today’s topic is “Going Green: Reducing Toxins in Your Life.” Learn quick and easy ways to add delicious and raw foods to your diet; includes Jazzercise session. Light refreshments provided. Register by calling 629-1234.

## **Monday, March 21 – Thursday, March 31**

**“The Louisville Clothesline Project Display”, Eskstrom Library, 1<sup>st</sup> floor, during regular library hours**

The Clothesline Project is a non-profit coalition of women that uses artistic expression to support female survivors of abuse, educates the community about violence against women, and advocates for policy change. The goal of the Clothesline Project is to both reduce the incidence of violence and to improve society’s response to victims. Shirts made by victims and survivors on display held as part of the Clothesline Project’s 20<sup>th</sup> Anniversary. Event continues with a presentation by Dr. Renee Campbell. (See March 28 listing). Co-sponsors: LALS (Latin American and Latino Studies), Kent School of Social Work, and the Dept. of Women’s and Gender Studies. For more details, contact Dr. Rhonda Buchanan, [rhondabuchanan@louisville.edu](mailto:rhondabuchanan@louisville.edu)

## **Wednesday, March 23**

**MOM (Modern Outlook on Motherhood) Support Group Meeting, #300 Bingham Humanities Bldg., 1:15 p.m.-2:15 p.m.**

Resources, information and genuine support for student-moms. Special guests and topics to be announced. Contact Phyllis M. Webb at [Phyllis.webb@louisville.edu](mailto:Phyllis.webb@louisville.edu) or Brittney D. Smith, [bdsmith08@louisville.edu](mailto:bdsmith08@louisville.edu) to reserve your spot and/or for more details.

(The final meeting of the spring semester will be on Wednesday, April 13. See that month for specifics.)

## **Thursday, March 24 (All day)**

**U of L’s PEACC (Prevention, Education & Advocacy on Campus and in the Community)** is sponsoring this day as one of strength and courage, representing solidarity with the victims of violence, demanding a world without rape and violence. New this year: Look for ways you can **PAINT IT BLACK**. Free buttons. Everyone is welcome to participate. For more details, visit <http://www.louisville.edu/peacc>.

## **Thursday, March 24**

**International Tea, U of L Red Barn, 12 p.m.**

This event is sponsored by the U of L PEACC (in collaboration with the International Center) and is a great time to make and meet friends. Free lunch provided. Everyone is invited. Visit the PEACC web site, <http://www.louisville.edu/peacc/>, for more information.

## **Thursday, March 24**

**2011 Minx Auerbach Lecture, Speed Art Museum (Auditorium), 2035 South 3<sup>rd</sup> Street, 6 p.m.**

Isabel Wilkerson, author of “The Warmth of Other Suns: The Epic Story of America’s Great Migration,” will be the featured speaker for the Minx Auerbach Lecture in Women’s and Gender Studies. She interviewed more than 1,200 people, unearthed archival works and gathered the voices of the famous and the unknown to tell the epic story of the relocation of an entire people in *The Warmth of Other Suns*. (See article in this edition of the newsletter for more details.)

## **Thursday, March 24**

**Cultural Night, U of L Cultural Center, 7 p.m.-9 p.m.**

The purpose of this event is to celebrate the diverse cultures of UofL and offer a structured social networking event, where students are invited to interact and learn from different student organizations representing a range of cultures. Think of it as a party with a purpose! The Women 4 Women student chapter is collaborating on this event with the Cultural Center.

## **Monday, March 28**

**“The Louisville Clothesline Project’s 20 Anniversary: A Celebration of Advocacy and Healing for Women,” William F. Ekstrom Library (Chao Auditorium), 3:30 p.m.-4:30 p.m.**

As part of The Clothesline Project’s 20<sup>th</sup> Anniversary, a talk will be given by Dr. Renee Campbell, director of the Wesley House. (See the Clothesline Project display, 1<sup>st</sup> floor Ekstrom). Co-sponsors: LALS (Latin American and Latino Studies), Kent School of Social Work, and the Dept. of Women’s and Gender Studies. For more information, contact Dr. Rhonda Buchanan, [rhondabuchanan@louisville.edu](mailto:rhondabuchanan@louisville.edu)

## **Wednesday, March 30**

**“Walk Together Children” is a one-woman show presented by Dr. Vinie Burrows, legendary actress, activist and scholar. U of L Brandeis School of Law (Room 275), 4:30 p.m.**

The show chronicles the African American experience. Dr. Burrows is a proud member of the Granny Peace Brigade and was arrested with 18 grandmothers for protesting the Iraq War. In addition to her theater and political involvement, she is also a Permanent Represent-



tative at the United Nations for the Women's International Democratic Federation. Visit <http://www.vinieburrows.com> for more information.

Sponsored by the Anne Braden Institute, The Tiller Fund, Women's Center, Women's and Gender Studies, African American Theater Dept., A&S Dean's Office for International, Diversity & Outreach Programs, the Commonwealth Center for the Humanities and Society Social Change Minor, Brandeis School of Law. For more details, e-mail Amber Duke, [agduke01@louisville.edu](mailto:agduke01@louisville.edu), or call 852-6142.

## April 2011

### Friday, April 1

**Talk/Discussion of the "Converging In-Sight" Exhibit by photographers, Carole Elchert, Phyllis Banis and Andrea Van Vorhis, Ekstrom Library (Chao Auditorium), 12 p.m.**

Elchert will discuss the significance of the exhibit's themes: return, remembering, renewal and revisioning. She also will talk about seeing, perception and the camera as an artistic mood. The artist has exhibited her images of Tibet in such locations as New York, London, Melbourne and Los Angeles. Banis, a Louisvillian who has studied with prominent landscape photographers and worked with them in the field, will talk about landscape photography dos and don'ts. Following their talk, Van Vorhis, whose work focuses on the American West, will join Elchert and Banis for a gallery walk with attendees to discuss and answer questions about their work. Call the Women's Center at 852-8976 for more information.

### Friday, April 1

**GREEN DOT Bystander Intervention Training, location to be announced, 4 p.m.-8 p.m.**

Going green is more than you thought. Earn a Green Dot! A green dot is any behavior, choice, word or attitude that promotes safety for everyone and communicates intolerance of rape, domestic violence and stalking. For this Green Dot Campaign, all men are invited to pledge that they will never commit, condone or keep silent about violence. For more details, email Sharon Larue, [sdlaru01@louisville.edu](mailto:sdlaru01@louisville.edu).

### Saturday, April 2

**GREEN DOT Training, location to be announced, 9 a.m.-1 p.m.**

Want to end violence but not sure how? GREEN DOT will give you the skills to move from passive agreement that violence is wrong to daily action toward prevention. Advocacy in action! For details, email Sharon Larue, [sdlaru01@louisville.edu](mailto:sdlaru01@louisville.edu).

### Friday, April 8 – Saturday, April 9

**Relay for Life of University of Louisville, Grawemeyer Hall-Oval Lawn, 7 p.m.-7 a.m.**

The American Cancer Society Relay for Life is a life-changing event that gives everyone in communities across the globe a chance to celebrate the lives of people who have battled cancer, remember loved ones lost, and fight back against the disease.

For more information about Relay for Life of University of Louisville, visit <http://relayforlife.org/louisville> or join the group on Facebook, <http://www.facebook.com/uoflrelayforlife>.

The U of L's Women 4 Women Student Group will have a team at this event. For additional details, e-mail Gabrielle B. Maxedon at [g0maxe01@louisville.edu](mailto:g0maxe01@louisville.edu).

### Tuesday, April 12

**Transformation Tea, Ekstrom Library (Chao Auditorium and lobby area), 3 p.m.-5 p.m.**

The tea is an opportunity for university and community women of color to become empowered by sharing concerns, problems and positive suggestions. The topic is "Today's Woman: Building Healthy Relationships," and the program will include speakers, networking and the presentation of the SHeroes Award. Reservations requested.

Nominations for the "Unsung SHero" Award are now being accepted. To be eligible, the nominee must be a woman of color who is presently a university employee and who has made a significant impact in the lives of women either in the Metro Louisville community or on the University of Louisville campus. The deadline to receive nominations is Friday, March 18. For a nomination form and criteria, e-mail Phyllis M. Webb, [phyllis.webb@louisville.edu](mailto:phyllis.webb@louisville.edu), or Georgette Moore, [glmoor01@louisville.edu](mailto:glmoor01@louisville.edu).

For more details about the event, contact Susan Rhodes, Chair, at [slrhod01@louisville.edu](mailto:slrhod01@louisville.edu), or Georgette Moore at [glmoor01@louisville.edu](mailto:glmoor01@louisville.edu).

### Tuesday, April 12

**Equal Pay Day was originated by the National Committee on Pay Equity (NCPE) in 1996 as a public awareness event to illustrate the gap between men's and women's wages.**

Tuesday was selected to represent how far into the work week women must work to earn what men earned the previous week. Because women earn less, on average, than men, they must work longer for the same amount of pay. The wage gap is even greater for most women of color. The NCPE is encouraging women to wear red on Equal Pay Day to symbolize how far women and minorities are in the red with their pay. Watch for announcements about planned Women's Center on-campus events or call 852-8976. (See Lilly Ledbetter article on pay equity elsewhere in the newsletter.)

### Wednesday, April 13

**MOM (Modern Outlook on Motherhood) Support Group Meeting, #300 Bingham Humanities Bldg., 1:15 p.m.-2:15 p.m.**

The MOMS Support Group provides information and genuine support for student-moms. Special guests and topics to be announced. Contact Phyllis M. Webb, [phyllis.webb@louisville.edu](mailto:phyllis.webb@louisville.edu), or Brittany D. Smith, [bdsmi08@louisville.edu](mailto:bdsmi08@louisville.edu), for more information or to reserve your attendance.

### Wednesday, April 20

**Women 4 Women Student Chapter meeting, University Club Alumni Boardroom, 2nd floor.**

Elections will take place for the 2011-2012 academic school year. Contact Gabrielle Maxedon at [gamaxe01@louisville.edu](mailto:gamaxe01@louisville.edu) for additional details.

### Thursday, April 21

**UofL Network Lunch, University Club, 12 p.m.-1 p.m.**

The Network Luncheon dialogue series focuses on racial and cultural diversity and addresses specific topics that are of interest to members of both U of L and Metro Louisville communities. "Presumption of Incompetence" will be presented by Dr. Sharon Moore, Kent School of Social Work, and her U of L colleagues who authored a chapter in her newly edited book, *"Dilemmas of Black Faculty at Predominately White Institutions in the United States: Issues of the Post-Multicultural Era."* For luncheon cost and more details, contact Dr. Linda L. Wilson at [llwils01@louisville.edu](mailto:llwils01@louisville.edu) or 852-0274, or Marian Vassar, [mrvass01@louisville.edu](mailto:mrvass01@louisville.edu); 852-2252. Sponsored by the College of Arts & Sciences.

### Thursday, April 28

Designed to be more than a career day, the Take Our Daughters And Sons To Work® program (recommended ages 8-18) goes beyond the average "shadowing" of an adult. Exposing girls and boys to what a parent or mentor in their lives does during the work day is important. But showing them the value of their education, helping them discover the power and possibilities associated with a balanced work and family life, and providing them an opportunity to share how they envision the future and begin steps toward their end goals (in a hands-on and interactive environment) is key to their achieving success.

This year's theme is "Invent the Future."

For more details about planned on-campus events, call the U of L Women's Center, 852-8976.