

The Women's Center News

Winter 2010

Check out the Women's Center at: <http://www.louisville.edu/womenscenter>

Volume 18, Issue 2

Founder of Younger Women's Task Force Delivers Keynote Message at Annual Luncheon

By Phyllis M. Webb, Women's Center

Alison Stein, founder of the Younger Women's Task Force, was the keynote speaker at the annual Elizabeth Cady Stanton Luncheon. According to Stein, workplace issues, including pay equity and work/life balances, affordable child care and domestic violence/sexual assault are current issues on the agenda for the Younger Women's Task Force (YWTF). Founded in 2004, YWTF is a grassroots organization for women in their 20s and 30s to take action on issues that matter most to them. There are chapters in several states.

Stein talked about five important lessons she learned while organizing and founding YWTF, and advised those interested in reaching out to and organizing younger women to keep those lessons in mind. First, younger women need to be the ones to define "younger women's issues"; second, they also need to be the ones to reach out to other younger women, "not their mothers." Third, organizers should also take advantage of the social media (i.e. Facebook, blogging, Twitter) that allows young women to connect with one another and build a movement.

Fourth, she also pointed out that there does not need to be an intergenerational divide but instead an intergenerational dialogue. Younger women can learn from the 'more senior



Ms. Alison Stein addresses the audience at the 8th Annual Elizabeth Cady Stanton Luncheon at the University Club.

generation' and be grateful for their prior labor and work. However, she continued, the senior women should be cognizant of listening to younger women and their perspectives in building the next generation of leadership within the movement. And, lastly, we as women have to return to consciousness raising (CR) as a tool for organizing.

Her talk concluded with a question and answer period and afterward she was available to speak with individuals about her work with the YWTF.

In addition to the speaker, the ECS Luncheon presented the recipients of the Mary K. Bonsteel Tachau Gender Equity Award and the M. Celeste Nichols Professional Development Award. The Tachau Award, which recognizes a member of the U of L community who has done significant work toward



The 2010 Dr. M. Celeste Nichols award winners, Candace Bell, Elizabeth Lush and Jean Edward are pictured displaying their certificates. At left is Phyllis M. Webb of the Women's Center.



Bonny Manning, winner of the 2010 Tachau Award, poses with River City and former BPW/U of L members. Row one: Bonny Manning, Bonnie Brown, Betty Griffin and Prafula Sheth. Second row: Violet Clark, Debbie Pierce, Jane Younger and Teena Halbig; Third row: Brenda D. Gunn, Ginny Copenhifer; and Cathy Zion.

gender equity, was given to Bonny Manning, a staunch advocate for Kentucky's women, past president of the local and state chapters of the Business & Professional Women; and organizer of the Equal Pay Coalition to begin lobbying legislators in the Commonwealth for passage of HB 399.

The Nichols Award, given to a U of L graduate student for travel or other professional development, was presented to three students: Elizabeth D. Lush, PhD, Psychology; Jean S. Edward, PhD, Nursing; and Candace D. Bell, MPA, Public Administration.

The luncheon, sponsored annually by the Women's Center, was held in November, with over 100 students, staff, faculty and community members in attendance.

(See the web site, <http://www.louisville.edu/womenscenter> for details on student presentations and more photos.)

(ECS Luncheon photos by Susan C. Harrison, Next Gen Services/Photography, IT)

Celebrating the History, Strength and Diversity of Women

“Our History is Our Strength.” Honoring the contributions of Dr. Gerda Lerner, it is the theme for the 2011 Women’s History Month. Dr. Lerner was born in 1920 and is known as the “god-mother” of the academic discipline of women’s history. Following the 1938 Nazi rise to power in Austria, she emigrated to the U.S. with other members of the Jewish community. When her children were in college, Dr. Lerner began her academic career, eventually earning a PhD in history from Columbia University. Speaking of her time in an Austrian prison after arrest by the Nazis, Dr. Lerner said “I did my jail time...with two young political prisoners, who had to look forward to long sentences...when our starvation-level rations were cut in half for me, the Jew, they shared their



Mary Karen Powers
Director, Women’s Center

rations equally with me... I believed that...I would end my days in a concentration camp. I learned that fear could be conquered by coming to terms with the worst possibilities... that fighting back... [gave] rise to hope... In order to survive, one must foster courage, accept help and help others.”

The 2010 elections witnessed a remarkable diversity among women elected to office in the United States. Alabama Democrat Terri Sewell became the first black woman from that state elected to the U.S. House of Representatives. South Carolina Republican Nikki Haley became the state’s first woman governor; the state’s first nonwhite governor; and the nation’s second Indian-American governor. New Mexico Republican Susana Martinez became the nation’s first female Hispanic governor. In addition, Maryland Democratic Senator Barbara Mikulski, the first woman elected in her own right to the U.S. Senate (in 1986), won re-election. Perhaps the increased diversity among women elected to office in the United States challenges us to remember – to paraphrase the 2011 theme – that “Our Strength is Our Diversity.”

Women Center Welcomes New Students

The Women Center welcomes newcomers Brittney D. Smith, Codi Singleton and Verena Schmidt to the office as of this past August. The student assistants and practicum student are involved in a number of projects, and they bring a unique student perspective to the mix.

Brittney D. Smith is a junior with a double major in Communications and Spanish. Since coming to the Center she has been involved with the MOM (Modern Outlook on Motherhood) Support Group by designing flyers and announcements and helping to promote the group on campus. She also served as captain of the Women’s Center team at the ‘Making Strides Against Breast Cancer’ Walk in October. After she obtains her Bachelor’s degrees she hopes to pursue a Master’s degree in Communications and begin a career as a print journalist.



Brittney D. Smith

What I like about the Women’s Center:

“I like the overall atmosphere of the women’s center; it is a very warm and inviting place and the employees are very friendly”.

Codi Singleton, from Brandenburg, Ky., is a freshman Biology major with plans to attend dental school. She is involved in the Pre-dentistry Society, Kappa Delta Sorority, the Women4Women student group, and she has designed various flyers and announcements for the office. Currently Singleton serves on the BABA (Body Awareness Body Appreciation) committee, which she hopes to see an increased involvement of the Women’s Center.



Codi Singleton

What I like about the Women’s Center:

“I like the fact that the Women’s Center provides so many opportunities to help and enrich the lives of women. Their programs provide information that is beneficial to improving the lives of young women.”

We are delighted that **Verena Schmidt**, a Fulbright Scholar from Raisting, Germany, has chosen the Women’s Center as her Advanced Practicum site as she pursues an MSW in the Kent School of Social Work. She has been working at the Center three days a week since mid-August. The focus of the Advanced Practicum is on developing the skills “to actively pursue social change, particularly with and on behalf of vulnerable and oppressed client systems...” Look for more information about Verena’s interests in the next issue of the Newsletter.



Verena Schmidt

Mee Ri Lee (“Mee Mee”) returns to the office from previous work in the Center. She is a Biological Chemistry major with future plans of attending medical school.

UNIVERSITY OF
LOUISVILLE



WOMEN’S CENTER

SPOTLIGHT: Georgette Moore – Office of the President’s Commissions

By Robin R. Harris, Brandeis School of Law

When Georgette Moore accepted a position in the circulation department of the Ekstrom Library in 1985, she started on a UofL career path that would lead her from the library to the College of Arts & Sciences, on to the President’s Office in Grawemeyer Hall, and finally to the Office of the President’s Commissions. Since January 2000, Georgette has worked to make the commissions run smoothly. She began as administrative assistant and is now senior program coordinator for both the Commission on Diversity and Racial Equality (CODRE) and the Commission on the Status of Women (COSW), groups charged with advising President

James Ramsey and Provost Shirley Willihnganz on diversity and gender equity issues. Georgette’s diplomacy, intelligence, and sensitivity enable her to manage the diverse personalities of the commissions, and her attention to detail helps her deal with the complexities of handling the business affairs of both



Georgette Moore

groups. And, because the commissions’ leadership changes every other year, Georgette’s position provides a sense of stability and much-needed institutional memory to these critically important advisory groups.

Georgette worked for two years in the Ekstrom Library and then moved to A & S Advising in 1987. In 1989 she began working for Kathleen Smith, the president’s chief of staff, whom Georgette cites as “one of the people I admire most at the university.” In January 2000, Kathleen assigned Georgette to the Office of the Commissions, and it soon became apparent that she had chosen the perfect person for the job.

During her time with the commissions, Georgette has seen important changes at UofL and important achievements for the commissions. For example, “CODRE has been able to impact faculty, staff and students through its programming committee and scholarship program. For COSW, by far the biggest accomplishment is providing child care through the Family Scholar House. That has been a goal since the beginning, and it has finally happened!”

Note: U of L’s Child Care [Early Learning Campus] is managed by the College of Education and Human Development and sits adjacent to the Family Scholar House located at 403 Reg Smith Circle.

Deadline January 28

Seeking Women’s History Month Events for March 2011 Calendar

By Phyllis M. Webb

In addition to other articles of interest, the 2011 spring issue of the Women Center News, a quarterly publication of the University of Louisville Women’s Center, is expected to be filled with exciting, informative and educational events and programs concerning women’s issues for the month of March. The **calendar of events** is a major source of information in the Louisville metropolitan area. It is mailed to subscribers, available on the Women’s Center web site, and distributed on U of L’s campuses. March is recognized nationally as Women’s History Month.

The National Women’s History Project (NWHP) coordinates observances of National Women’s History Month throughout the country. The NWHP originated this widely recognized celebration and sets the annual theme, produces educational materials, and chooses particular women to honor

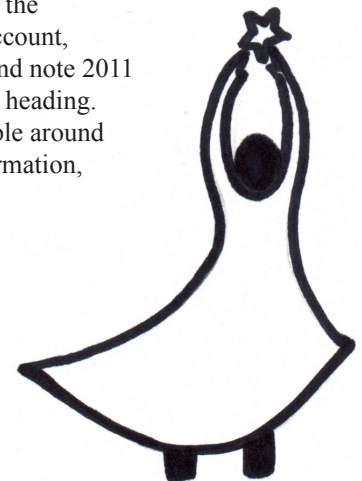


Courtesy of the National Women’s History Project (NWHP)

nationally for their work. The 2011 theme is “*Our History is Our Strength.*” Women’s History Month programs, community events, plays, essay contests, and related projects often have wide-ranging effects. For more information on Women’s History Month and the NWHP, visit <http://www.nwhp.org/aboutnwhp/index.php>.

If you would like to have your organization’s event listed, please let us know. You can download a form at <http://louisville.edu/womenscenter>, complete and fax it to 852-4389 by January 28. You may also send your information directly to the Women’s Center Service Account, womenctr@louisville.edu and note 2011 Calendar Information in the heading. The calendar will be available around February 22. For more information, call 852-8976.

(*Source: NWHP)



Holidays....Parent-Student Style

By Brittney D. Smith

The 2010 holiday season has arrived and is definitely apparent everywhere you look. It is not uncommon for one to see festive holiday lights and decorations adorning homes and businesses, people bundled up in their best winter attire ready to brave the cold, not to mention the masses of people shopping like crazy, hurriedly trying to get those must-have items of the season.

As we fill our stomachs with those great home-cooked comfort foods of Thanksgiving and look forward to the Christmas, Hanukkah and Kwanzaa holidays, it is fascinating to think just how many different ways people will spend their holiday season.

I generated a few responses from student-parent members of the M.O.M. support group when I asked about their holiday plans.

Laurie Beth McTighe, a law-student from Shepherdsville, Ky., said "We are going to the Christmas in Candyland performance at the Derby Dinner Playhouse Children's Theatre. I'm really excited about it because it is for kids, so it provides a rare opportunity to expose your kids to the theatre without having to worry about whether or not they are going to behave! I'm also hoping it will be more bang for the buck since it's only a [minimum amount] for a ticket and includes breakfast, and most of the Breakfast with Santa stuff I've done in the past costs that much and has not been too impressive."

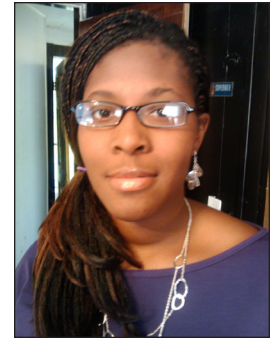


Another student-parent, Keyotta Edwards from Louisville, who is a junior majoring in communications, had this to say when asked about how she will spend the holidays. "My family and I plan to spend Christmas here at home. We have three children and one on the way and Christmas is a task in itself from budgeting to cooking."

She offers these "tips": Do a visual shopping spree to find what children are interested in; allot each child a certain amount of money to stay within budget; buy gifts (toys) that one or more can play with; make gifts, i.e. cards with a personal touch [from your heart instead of buying mass produced items]; handmade decorations for the tree; and visit other family members. "There are a lot of older people in my family and we like to visit them to help the kids remember the true reason for the season." She continued, "The favorite part about the holidays is the togetherness that we have."

As a student-parent with a double major in Communications and Spanish, my plans for the holidays are to relax and spend time with my daughter. As a student-parent, I have to sacrifice a lot of time with her, which is why I love the holiday breaks, because we get to spend lots of time together. My daughter has a birthday in December, so we will definitely be celebrating that. We are also going to see the Christmas in Candyland performance at the Derby Dinner Playhouse Children's Theatre. In addition, I will also be taking her to see Santa Claus. Hopefully, she won't be afraid of him.

No matter what you will celebrate this season and however you will celebrate it, have a safe and fun time doing it. Happy holidays!



Keyotta Edwards

2011 Kentucky Women's Book Festival Features Nationally Recognized Authors

By Phyllis M. Webb

The 2011 Kentucky Women's Book Festival will feature nationally acclaimed authors when it begins on Saturday, May 21, at the University of Louisville.

The keynote speaker will be Tania James, a filmmaker and author of "Atlas of Unknowns," her debut novel. The book deals with the pressures of cultural experiences played out in family life. James grew up in Louisville, Ky., and now resides in Washington, D.C. The opening plenary speaker will be Alanna Nash, a journalist, writer and biographer. She wrote "Baby, Let's Play House: Elvis Presley and the Women Who Loved Him." Nash resides in Louisville. The closing speaker for the day will be Sena Jeter Naslund, a Birmingham, Ala., native who is Writer-in-Residence and director of Spalding University's brief-residency Master of Fine Arts Program in Creative Writing. She was a former director of the Creative Writing Program at the University of Louisville. Naslund also resides in



Tania James, author of "Atlas of Unknowns" is scheduled to be the keynote speaker for the 2011 KWBF.

Louisville. Her most recent book is "Adam & Eve."

Throughout the day there will be concurrent workshop sessions on the Nuts & Bolts of Writing and Nuts & Bolts of Publishing with additional writers and speakers. For a complete schedule and updates, visit <http://www.louisville.edu/womenscenter/kwbf>. Additional information will also be included in the spring 2011 issue of *The Women Center News*.

Tania James photo (c) courtesy Tania James website

Record Crowd Sees Louisville Women's Basketball Team Open Season Against Tennessee Vols

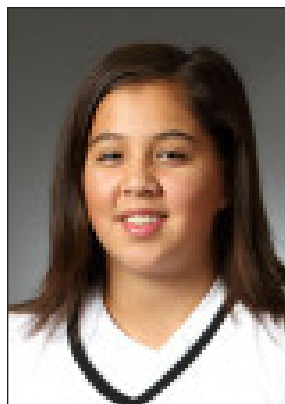
By Amy Seng, Director of Student-Athlete Development

The Louisville Cardinals women's basketball team opened the season in November in the brand new KFC YUM! Center against the powerhouse Tennessee Volunteers. It was a historic night as Louisville set a school and BIG EAST attendance record for Women's basketball with a sellout crowd of 22,124. The Cards also honored Angel McCoughtry, UofL's all-time leading scorer for both men and women, who led the team to the 2009 NCAA National Championship runner-up finish. McCoughtry's jersey is the first women's basketball jersey to be retired in school history.

The Cardinals held their own and kept it close, at one time trailing only 45-44 with 7:15 remaining in the second half. But the #4 nationally ranked Vols proved why they are a perennial powerhouse, pulling ahead of the Cards in the final minutes, ultimately winning the contest 63-50. Although the end result was not a win, the Cardinals' performance is promising for the upcoming season.



Louisville welcomes the Number Five recruiting class in the nation with six new freshmen, led by point-guard Shoni Schimmel. The freshmen are contributing immediately and playing significant minutes. With a few more



Shoni Schimmel

games under their belt, they will only become more confident and skilled. The Cardinals were ranked eighth in the BIG EAST coaches' pre-season poll, but their impressive display against the Vols has many now calling them the "sleeper" of the conference who will most likely pull off some impressive upsets. Tennessee head coach Pam Summit was so impressed with Louisville's coach Jeff Walz that she commented on her willingness to start a multi-year series with the Cardinals.

The Louisville Cardinals played against in-state rival Kentucky on Sunday, December 5, winning 78 to 52. For more information on the Lady Cards, visit <http://www.uoflsports.com/sports/w-baskbl/mtt/lou-w-baskbl-mtt.html> and/or for ticket information, call 502-852-5151. GO CARDS!



UNIVERSITY OF
LOUISVILLE
It's Happening Here.®

Women's Equality Day



The Women's Center staff pictured with Eleanor Jordan, Director for the Ky. Commission on Women at the August Women's Equality Day celebration in Frankfort.

Women's Equality Day was celebrated at the State Capitol this past August. Those pictured include (left-to-right): (Lady in hat unidentified), Aloma Dew, Chair-Ky. Commission on Women; Faye Dykstra (in hat), American Association of University Women; Kimberly Maffet, Special Assistant to the President & Provost, U of L; and Virginia Woodward, Exec. Director of Boards and Commissioner for Kentucky Gov. Steven Beshear.

Dr. Bernice Johnson Reagon Delivers 4th Annual Anne Braden Memorial Lecture

By Amber G. Duke, MA, Acting Co-Director/Program Coordinator, Anne Braden Institute for Social Justice Research

“Step out of line. We must put our bodies where they are not supposed to be. Challenge evil...with no guarantee of success.” This was the message that Dr. Bernice Johnson Reagon gave to students in her songtalk performance during the 4th annual Anne Braden Memorial Lecture. The November 5th event at Comstock Hall was presented by UofL’s Anne Braden Institute for Social Justice Research (ABI) and co-sponsored by the School of Music.

Dr. Reagon, one of The Freedom Singers for the Student Nonviolent Coordinating Committee (SNCC) in the 1960s, blended music and message in her presentation titled “The Civil Rights Movement & Students: Creating a Vital, Transformative Change in the Struggle for American Freedom.”

Audience members joined the renowned singer/songwriter, founder of the *a capella* women’s musical group “Sweet Honey in the Rock,” and former cultural historian at the Smithsonian Museum of American history, in singing freedom songs as she told stories of the fight for freedom and justice during the Civil Rights Movement. Dr. Reagon describes her



Dr. Bernice Johnson Reagon

unique presentation style: “These days I come as a ‘songtalker,’ one who balances talk and song in the creation of a live performance conversation with those gathering within the sound of my voice.”

The songtalk was the culmination of the ABI’s commemoration of the 50th anniversary of the southern student sit-ins and the birth of SNCC. For those unable to attend the event, there is a highlight video posted on the Braden Institute’s Facebook (<http://tinyurl.com/2fjn9rq>) and YouTube pages (<http://www.youtube.com/annebradeninstitute>).

The Anne Braden Memorial Lecture only has dedicated funding through 2011. If you are interested in helping the ABI make this important campus/community event truly annual, call 502-852-6142 to learn about the Friends of the Braden Memorial Lecture fundraising drive.

Special thanks to all the faculty, staff, students and community who donated to the MOMS Clothing Exchange Project of the Women’s Center MOMS Support Group.



Clothing donations line the walls of the Women’s Center in early December just before the Giveaway.



Women’s Center photo files

To read more follow this link: <http://www.louisville.edu/uoftoday/campus-news/womens-center-helps-parents-with-clothing-giveaway>

UNIVERSITY OF
LOUISVILLE



WOMEN’S CENTER

The Women’s Center News

A publication of the Women’s Center at the University of Louisville

Editorial Board: Valerie Casey, Brenda D. Gunn, Robin Harris, Ruth Miller, Kathy Pendleton, Mary Karen Powers, and Phyllis Webb.

The Women’s Center News is a free, quarterly newsletter. It is available on-line at www.louisville.edu/womenctr.

To receive a hard copy of the newsletter or to sign up for email announcements, contact us at: Women’s Center, University of Louisville, Louisville, KY 40292; 502-852-8976; or womenctr@louisville.edu.

The University of Louisville is an equal opportunity institution.

This publication was prepared by the University of Louisville and printed with state funds KRS 57.375.