

The Women's Center News

Spring 2007

Check out the Women's Center at: www.louisville.edu/provost/womenctr

Volume 14, Issue 3

Minx Auerbach Lecture for 2007 Will Feature *Nation* Journalist Katha Pollitt

By Lin Billingsley, Department of Women's and Gender Studies

The Department of Women's and Gender Studies invites everyone on the UofL campus and in the Louisville community to the 2007 Minx Auerbach Lecture in Women's and Gender Studies, featuring journalist Katha Pollitt. This year's lecture will be presented in the Speed Museum Auditorium on Wednesday, March 28, at 5:30 p.m. and is free and open to the public. Pollitt's lecture is entitled: "Are We There Yet? Why Women Aren't Equal Even If We Think We Are."

Katha Pollitt is the third journalist to be featured as a Minx Auerbach speaker, following Barbara Ehrenreich, the first Minx Auerbach speaker in 1998, and Ellen Goodman, who gave the Minx Auerbach

Lecture in 2003. Pollitt's column, "Subject to Debate," appears regularly in *The Nation* and is reprinted frequently in other U.S. newspapers. Her work has appeared in *The Nation* since 1980. Pollitt focuses her writing often on gender issues, especially as they relate to poverty, civil liberties, and the "culture wars." She has written on "family values," surrogate mothers, "difference feminism," teenage motherhood, welfare "dependency," and abortion's place in health-care reform—to name just a few topics. Her recent book, *Virginity or Death*, reflects her interest in the politics of gender in the U.S., following her earlier book (a collection of her essays), *Reasonable Creatures: Essays on Women and Feminism* (1994).

Katha Pollitt has won many awards for her essays, some for gender-related topics, and also for her poetry. She has

won the *National Magazine Award* for essays and criticism, the Whiting Foundation Writing Award, and the Maggie Award from the Planned

Parenthood Federation of America for her essay "Why Do We Romanticize the Fetus?" Pollitt has also received a National Endowment for the Arts grant and a Guggenheim Fellowship for her poetry. Her poems have appeared in *The New Yorker*, *The Atlantic*, *The New Republic*, and other publications.

The Department of Women's and Gender Studies invited Katha Pollitt to



(continued on back page)

PEACC – Prevention, Education, and Advocacy on Campus and in the Community Serves Students, Staff, and Faculty on Campus

By Valerie M. Casey,
Women's Center

The PEACC Program created at the University of Louisville in 1999 provides proactive comprehensive education that addresses violence against women and provides direct on-campus services for students, staff, and faculty.*

This program is currently administered by the Women's Center and is directed by Sharon LaRue, MA. LaRue earned her undergraduate degree in Art Therapy from the University of Memphis. Her graduate work in Expressive Therapies was completed at the University of Louisville in 1999. To accomplish the PEACC goal to address, prevent, and respond to violence against women students, faculty, and staff on campus, LaRue has formed a Coordinated Response Team, joining forces with Student Health, Counseling, Campus Life, Housing, the Department of Public Safety, and Athletics.

She has made a commitment to support victims of violence and provides counseling, hospital escort, referrals for emergency housing and support through judicial proceedings when requested.

PEACC works to raise awareness and eliminate violence against women by offering training and educational programs at all levels of the university. LaRue collaborates with campus and community organizations including, the Commission on the Status of Women, Center for Women and Families, and the University of Kentucky's Women's Place to provide this training. Programs are held during Freshman orientation, in Campus Culture Classes, in residence halls, and student



organizations. PEACC's web site provides victim services, law enforcement and reporting, medical attention, therapy, and support groups. A RED ZONE public safety announcement is run in the Student Activity Building during the first critical weeks of September; national figures are invited to the University to speak. Annual events sponsored by the PEACC Center include the Take Back the Night Program, the International Women's Day Event, and the *Vagina Monologues*. For more information about the PEACC Center or the Women's Center, visit their web sites at <http://louisville.edu/org/peacc/> or <http://louisville.edu/provost/womenctr/>

* Editor's Note: Between September 1999 and March 2006, the UofL Women's Center secured \$1.2 million in funding from the U.S. Department of Justice Campus Grants

(continued on page 7)

Gender Equity



Recently UofL welcomed four senior administrators: Vice Presidents for Research and Campus Life; and Deans for the Schools of Medicine and Law. This cohort

of talented male colleagues significantly increases the racial and ethnic diversity of UofL's leadership – which the Women's Center applauds. At the same time, each of these positions was recently held by a talented woman – IE – Vice Presidents Nancy Martin and Denise Gifford; Acting Dean Laura Schweitzer, and Dean Laura Rothstein. This has prompted conversation in the Women's Center about gender equity. Here's a "snapshot" of what we've learned, using data from the Integrated Postsecondary Education Data System (IPEDS) – which is tracked by UofL's Office of Institutional Research – and the UofL website.

IPEDS documents 72 UofL senior administrators in 1999, 29.2% of whom were women. By 2006, there are 112 senior administrators, 34.8% of whom are women. Thus, the percentage of "female senior administrators" tracked by IPEDS has increased by 5.6%. Today, there are 39 female senior administrators compared to 73 males. In addition, eight of the University's twenty trustees are women, and a woman has served as university provost since 1997.

However, when analyzing the smaller group of *UofL's most senior leadership*, which is documented by the organizational chart on the university's website,* another picture emerges. In 2007, *twenty-three* of these *twenty-seven* leadership positions are held by men, and four are held by women. (In 2004, eight of these positions were held by women). Thus in 2007, UofL's most senior leadership is **85% male and 15% female**.

Our conclusion, then, is that there

(continued on page 7)

A publication of the Women's Center at the University of Louisville. Editorial Board: Robin Harris, Lucy Freibert, Kathy Pendleton, Phyllis Webb, Valerie Casey, and Mary Karen Powers. *The Women's Center News* is a free, quarterly newsletter. It is available on-line at www.louisville.edu/womenctr. To receive a hard copy of the newsletter or to sign up for email announcements, contact us at: Women's Center, University of Louisville, Louisville, KY 40292, or contact the Women's Center at 502-852-8976 or womenctr@louisville.edu.

Diversity of Vision and Collaborative Sponsorship Empower Campus and Community Groups

By *JaBani Bennett*,
Student Events Coordinator

On Monday, January 29, 2007, more than a hundred people assembled in the UofL Red Barn to celebrate the visions, creativity, and contributions of LGBT sisters and the international struggle for equality across sexual orientations and racial identities. The emcee of the night and local LGBT activist, Aletha Fields, kept the crowd inspired as each performer expressed love for womanhood through dance, recitation of poetry, singing or reading informative essays.

The Women's Center's program "Representing the Voices of Women in the LGBT Community" brought in fifteen tabling organizations such as Planned Parenthood, Gurls on Bykes, PEACC Center, Kentucky Religious Coalition for Reproductive Choice, ACLU of Kentucky Reproductive Freedom Project, Fairness Campaign, Saturday Academy and more to participate. Many people expressed gratitude towards the creation of such an event in a community where LGBT issues are still tabooed. I organized the program because of the expressed need from various groups. The event became a collaborative and harmonious effort among various grassroots, non-profit, and university organizations and created new associations where none had been before.

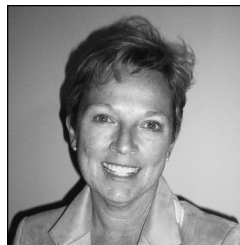
Thanks to the sponsors – the Red Barn, Women's and Gender Studies Department, the Vice Provost for Diversity and Equal Opportunity, Mordean Taylor-Archer, Fairness Campaign, the Anne Braden Institute for Social Justice Research, and the Women's Center – the event was made possible.

From a holistic perspective, as one looks at numerous historical struggles across race, ethnicity, color, disabilities, gender, and class, certain commonalities emerge. No one should be refused access to a high quality of life by those in power because of the way she looks, talks, lives, etc. As Black History Month comes and goes, and we go into Women's History Month, we need to celebrate the triumphs of those who brought us this far toward equality. We should endeavor to maintain the tradition of community building and seek practical ways in our daily lives of providing more safe spaces such as the LGBT event. Your support would be welcome.



Valerie Casey, Administrative Assistant

I joined the Women's Center in September, as an Administrative Assistant replacing Kathy Kremer who retired this past summer. I



handle the day to day operations of the department and assist with programs sponsored by the Women's Center. It has been a wonderful experience being surrounded by associates who value the contributions of women and work for the equal treatment of all people. I greatly enjoy being involved with the programs the Women's Center sponsors that draw attention to women and family issues.

My goal at the Women's Center is to run the daily operations smoothly, promote the Women's Center programs, and celebrate the success of women.

My personal interests include family, travel, and sports. I'm an alumna of U of L, a huge sports fan (women and men's), and I love to organize hiking trips for my friends. This year, we'll hike Flat Top Mountain (elevation 12,354') and Twin Sisters Peak (elevation 11,428') in Estes Park, Colorado.

Please continue to stay connected to the Women's Center through our newsletter and consider the Women's Center your connection to the University. Look us up at our web site www.louisville.edu/provost/womenctr/ and feel free to contact us with issues you would like to see covered in our newsletter.

Women's History Month Calendar of Events

This listing of campus and community events is provided by the University of Louisville Women's Center. Unless noted, all events are free, open to the public and take place on U of L's Belknap Campus. For more information, call the person listed with each event. The calendar is online at www.louisville.edu/provost/womenctr.

FEBRUARY

Thursday, February 22

Gender and Science: Myths and Realities. Features Dr. Marlene Zuk who is in the Department of Biology at the University of California-Riverside. She is also the author of *Sexual Selections: What We Can and Can't Learn about Sex from Animals* (University of California Press 2002). 1:00-2:30 pm, Department of Biology and Department of Women's and Gender Studies, Belknap Research Building, Rm. 139. Nancy Theriot, nancyt@louisville.edu.

Monday, February 26 – Friday, March 2

Eating Disorder Awareness Week Informational Table. An all-week Blue Jeans Collection. Accept the genes your in! Donate the blue jeans that no longer fit at any Residence Hall or on the 2nd floor of the SAC outside the cafeteria. Look for the box located near the Eating Disorder Awareness Week poster. All jeans will be donated to local clothes closets. There will be information about eating disorders and body images, giveaways and a chance to enter drawing for prizes. 11:00 am-1:00 pm, Student Counseling Center. Valerie Volland or Laura Byrd, 852-6585, vavola@louisville.edu.

Tuesday-Thursday, February 27-29

Eating Disorder Awareness Week Video Viewing and Discussion. A thirty-minute viewing of "Recovering Bodies" with a brief discussion afterward. February 27th at 5:00 pm-6:00 pm, Student Counseling Center, Research Building, 1st Floor Multi-media Room. February 28th at 12:00-1:00 pm, Commuter Services, Davidson Hall. February 29th at 12:00- 1:00 pm, HSC, K Building, Room K2037, School of Nursing. Valerie Volland or Laura Byrd, 852-6586, vavola@louisville.edu.

Wednesday, February 28

Play, My Secret Language of Wishes by Cori Thomas. Who will adopt Rose, a disabled African-American teenager: the plain speaking white woman who cares for her or the business woman who just might

share more with Rose than the color of their skin? This new play is by one of New York's most promising playwrights. February 28-March 4, 8:00 pm with a Sunday matinee at 3:00 pm, Department of Theatre Arts, African American Theatre Program, Thrust Theatre 2314 S. Floyd Street, corner of Floyd and Warnock. Dr. Lundeana Thomas, 852-8442.

MARCH

Thursday, March 1

Department of Communication Film Series on Relationship. Screening of two international films on women's issues: "Central Station" (Brazil) and "Faat Kine" (Senegal). March 1 and March 8 at 7:00-9:00 pm, Department of Communication, Chao Auditorium of Ekstrom Library. Michela Ardizzoni, 852-2929.

Mirel's Daughter at the Women Who Write March Meeting: Kay Gill will read from her book, *Mirel's Daughter at the Women Who Write March*. 6:30 pm, Carrider Jones, Reading Room of Shelby Park Library in the Mid City Hall. Free parking.

Thursday, March 1-4

Diana Walker: Photojournalists The Frazier International History Museum hosts the Smithsonian Institution Traveling Exhibit featuring 83 award-winning photographs by *Time Magazine* photojournalist Diana Walker. Ms. Walker earned wide international acclaim for her coverage of American political history during the 1970s, 80s, and 90s. Relive major historical events from our recent past while viewing both formal and behind-the-scenes intimate photographs of presidents, politicians, world leaders, and public icons. 9:00 am-5:00 pm, Frazier International History Museum, 829 West Main Street. 753-5663, www.frazierarmsmuseum.org.

Friday, March 2

A Minute WITHOUT Silence. Silence and secrets all-too-often surround the crime of sexual assault. A Minute WITHOUT Silence encourages voices and makes noise to build awareness and let survivors know they are not

alone. Make plans to join us around noon on the Lawn in front of the Red Barn for a Minute WITHOUT Silence to occur at exactly 12:34 pm. Be prepared to shout empowering chants, read anti-sexual violence poems, or play anti-violence music. Bring your homemade signs, too. Visit www.thecenteronline.org or call PEACC at 852-2663 for more information.

March 2 to May 2007

Project Women's Women of Wisdom 2007: A Woman's Journey. The 2007 Women of Wisdom Art Exhibit takes place during Women's History Month and will feature art honoring "A Woman's Journey." Curated by Nancy Peterson of Edenside Gallery, the exhibit features artists from the Kentuckiana region and displays original works speaking to this theme. The exhibit will be housed at the National City Bank lobby at the corner of 4th and Muhammad Ali, a location at the center of Louisville's vibrant cultural and artistic district. The opening reception will take place March 2nd from 5:30-7:30 pm. Cathe Dykstra, 584-8090, cdykdra@projectwomen.org.

Wednesday, March 7

Virginia Allen Young Careerist. This program recognizes the accomplishments of successful, young women and men, while introducing them to the mission and vision of the BPW/USA. Candidates participate in the local competition (orator skills); the winner will proceed at the regional level, and then compete at the national level. Lunch is \$20 per person. 11:30 am, Business and Professional Women Louisville, Masterson's Restaurant, 1830 South Third Street. Sharron, 775-2567, sharronj@morethanconsultants.org.

Wednesday and Thursday, March 7 and 8

FREE!! Spring break Goodie Bags. PEACC will be giving out free goodie bags to all students. Bags will include information on spring break safety, STI, condoms, candy, etc. 11:00 am-1:00 pm, PEACC Program, March 7th in the Red Barn, March 8th in the SAC 2nd floor entrance. Sharon LaRue, 852-2663, peacc@gwise.louisville.edu.

Thursday, March 8

2007 Commemoration of International Women's Day. International Women's Day is an opportunity to remember the history of women's focus on changes that benefit women in the workplace and at home. It is also a chance to come together as a community of women in support of women past and present and celebrate diversity within Louisville Metro as well as a chance to share information and learn about local resources. Everyone is invited to participate! 5:30-7:00 pm, Americana Community Center, 4801 Southside Drive. Sharon LaRue, 852-7014.

Judi Jennings: Gender, Religion, and Radicalism in the long 18th Century (Ashgate 2006). Judi Jennings, historian, former Director of the University of Louisville's Women's Center, and current Director of the Kentucky Foundation for Women, will discuss and sign copies of her new book. 4:30-5:30 pm, University Libraries, Chao Auditorium of Ekstrom Library. Delinda Stephens Buie, 852-6762, dsbuie@louisville.edu.

Friday, March 9

Living Well Workshops: Family Health Center—Fairdale: Do you have diabetes, arthritis, heart or lung disease, high blood pressure, cancer, pain, depression, or other on-going health conditions? The Chronic Disease Self-Management Program is a six-week series of workshops that meet for 2 ½ hours, once a week in community settings such as senior centers, churches, mall and hospitals. Registration fee is \$15. Sponsors: U of L Dept of Family & Geriatric Medicine, Family Health Centers, Louisville Primary Care Association, YMCA of Greater Louisville, Louisville Metro Health Department, KIPDA. 852-1804, 772-8588, <http://familymedicine.louisville.edu/chonிக்கare>.

Women's Center Lunch Bunch. As an expression of our thanks for your continued support and in an effort to meet many of our new friends, we invite you to the Women's Center for warm conversation and hot chili or a vegetarian dish. The Women's Center is located in Room 4 of the Administrative Annex. 12:00-1:00 pm, RSVP to Valerie Casey, 852-8976 or vmcase01@louisville.edu

Monday, March 12

Voting Rights. League of Women Voters of the United States President Mary G. Wilson will speak about DC Voting Rights. A certificate will also be

presented to her by Attorney-General Greg Stumbo. Dinner is \$15 for non-members, \$10 for members. 6:00 pm, League of Women Voters of Louisville, 115 South Ewing Avenue off of Frankfort Ave. Teena Halbig, 895-5218, 267-6883, teenahal@aol.com.

Tuesday, March 13

Women at the Forefront of History, 1775-. Genie Potter will use her talk/slide show to show how she worked collaboratively with Filson researcher, Shirley Harmon. Harmon will tell how she analyzed a Louisville woman's papers so that Potter was able to find material she might have missed. To make a reservation, please call 635-5083. 12:00 pm, Filson Historical Society, Place to be announced. Genie K. Potter, 896-2626.

Thursday, March 15

Bowling For Choice. Get a team of four bowlers together and gather pledges or come on your own. Team registration is \$100; Individual is \$25. There will be prizes for the top 3 individual fundraisers and for the top fundraising team captain! 7:00-10:00 pm, ACLU of Kentucky Reproductive Freedom Project, Vernon Lanes, 1575 Story Ave. Contact Amanda Kreps-Long, 581-9746, RFP@aclu-ky.org for pledge forms.

Fellowship of Reconciliation Third

Thursday Lunch. A dialogue of how the interaction of gender and race continues to be difficult for activists committed to social change. Come join the conversation. Fee: \$7. Luncheon reservations maybe made calling the contact number. 11:30 am-1:00 pm, Women's Center and Fellowship of Reconciliation, The Rudyard Kipling, 422 West Oak St. Polly Johnson, 473-8435, phj5@insightbb.com.

Saturday, March 17

Cultural Showcase: Uzbekistan with the Crescent Moon Dancers. A showcase of dances from Uzbekistan. The Crescent Moon dancers, established in 1990, promote and celebrate the many rich, diverse, and ancient cultures of the Middle East and Central Asia through their dances. The troupe's repertoire includes folk dances from Egypt, Saudi Arabia, Turkey, Persia, Central Asia, and Afghanistan while performing Egyptian and American style Belly Dance, and classical dances from Persia and Central Asia. They provide education through entertainment. 1:00 pm, Iroquois Branch of the Louisville Free Public Library, 601 West Woodlawn. Sophie Maier, 574-1701.

Green Tea Service. A "Green" service honoring women's history and women's health. Immediately following the service, there will be a special "Just for Us Girls Tea Party" presented by the Harriet Porter Cancer Education and Research initiative, including free refreshments and information on women's health. 12:00pm, St. John AME Church, 1036 Euclid Ave. Rev. Derek Terry, 637-8795.

Monday, March 19-30

Witness. A portrait series that presents an intimate look at an issue affecting 1 out of every 3 women in our society. Jeanie Adams-Smith, an assistant professor in the Photojournalism Program at Western Kentucky University, has spent a year working with women who have been raped or sexually abused. The result is a powerful photography exhibit featuring 14 women and their testimonies. Each portrait speaks to the personal journey the woman has taken to heal. PEACC Program, Ekstrom Library. Sharon LaRue, 852-7014.

Tuesday, March 20

Women's Day. A program dedicated to women. Dawn Gee (WAVE 3 anchor) will be the keynote speaker along with on-stage testimonials on what it means to be a woman. Dinner is provided. 7:00-11:00 pm, Student Activities Board, Red Barn. Jesse A. Dunbar, 852-6691, jadunb01@gwise.louisville.edu.

Tuesday and Wednesday, March 20 and 21

Legal Awareness. Various topics to empower participants in the workplace and community. 10:00 am-12:00 pm, Office of Multicultural Academic Enrichment Programs, Minority Affairs Building (North entrance to campus). Phyllis M., 852-0229, 852-6656, pmwebb01@gwise.louisville.edu, Phyllis.webb@louisville.edu.

Wednesday, March 21

A March to Justice. Join the Clothesline Project, formerly incarcerated women and other panelists in an in-depth discussion of the fight to obtain justice for a group of imprisoned women who have since become known as the "Sisters in Pain." With other advocates these distinguished panelist were successful in persuading Governor Brereton Jones to grant clemency to ten women who were incarcerated for either killing or

conspiring to kill their abusers. 12:00 pm, Egan Leadership Center at Spalding University. For more information please contact Angela Daniel at akdaniel79@gmail.com or Andree Mondor, 741-0406.

Thursday March 22

Carolyn Krause Maddox Prize. A presentation of winning papers. 1:00 pm-2:15 pm, Women's and Gender Studies Department, Bingham Humanities 300. A light lunch will be provided, so people who wish to attend must make a reservation by calling 852-8160 or by emailing lin.billingsley@louisville.edu

Thursdays in Black. Every Thursday in March around the world women wear black as a symbol of strength and courage, representing solidarity with the victims of violence, demanding a world without rape and violence. The UofL community will participate in this event on March 22nd. Everyone is invited to participate!

Saturday March 24

Women Leaders: Today and Tomorrow. Changing the Face of Politics. A day long event featuring speakers and workshops. \$45 conference only. \$25 dollars for students. Scholarships are available. Registration 8:00-8:30 am. Luncheon and speaker 12:30-2:00pm, Metropolitan Louisville Women's Political Caucus, Holiday Inn Second St. Bobbi Jo Webber, 448-1625, bobbijo@wesselinsurance.com.

Saturday, March 24-30

Poverty Awareness Week. A daily teach-in from 12:15-1:00 pm with free food in the Students Activities Center in Rm. w303A. Subjects will revolve around poverty awareness and nightly events including films and a hunger Banquet. Jennifer L. Wallin, jen.wallin@louisville.edu.

Wednesday, March 28

Annual Minx Auerbach Lecture in Women's and Gender Studies: Katha Politt on 'Are We There Yet?' Why Women Aren't Equal's Even If We Think We Are. Book-signing, a lecture by Katha Pollitt, and an informal reception. Book-signing starts at 5:00 pm and lecture at 5:30 pm, Women and Gender Studies Department, Speed Museum Auditorium. Lin Billingsley, 852-8160.

Conflict Transformation for Women. A conflict management workshop for women to use in professional and personal situations led by Terra Simms, MSW and JaBani Bennett, MAT. Held at the University of Louisville, Belknap Campus, Commuter Student Services Office, Davidson Hall room 105 from 11:30-1:00 pm. For time and additional information contact Terra Simms or JaBani Bennett at 502-852-8976 or e-mail trsimm01@louisville.edu or bennett_jabani@yahoo.com

Thursday, March 29

First Annual Louisville Sane Silent Auction. First annual silent auction to benefit the Louisville Sane Program. Held at Bristol Bar and Grille, 1321 Bardstown RD, at 5:30 pm Hors D'oeuvres and cash bar ends at 8:30 pm. Louisville Sane Program, Bristol Bar and Grille Conference Rooms. Farrah Guerrant, 562-4064, farrahgn@ulh.org.

Gender and the Moderns: A Celebration of New Scholarship. A panel discussion and book-signings of new works by UofL Professors Suzette Henke (*Virginia Woolf and Trauma*, Pace University Press, 2007), Aaron Jaffe (*Modernism and the Culture of Celebrity*, Cambridge University Press, 2005), and Matthew Biberman (masculinity, Anti-Semitism, and Early Modern Literature: From the Satanic to Effeminate Jew, Ashgate, 2004). 4:30-6:30 pm, University Libraries, Ekstrom Library Lower Level Lobby. Delinda Stephens Buie, 852-6762, dsbuie@louisville.edu

Pioneers on the Supreme Court: The Leadership of Sandra Day O'Connor and Ruth Bader Ginsburg. Dr. Barbara Perry will discuss the life and times of the two most prominent women in American law, Sandra Day O'Connor and Ruth Bader Ginsburg, and their influence on gender equity. The program will also recognize finalists in the high school student essay contest on women leaders, and will feature samples of the students' submissions. 3:00 pm, McConnell Center, Chao Auditorium of Ekstrom Library. Malana S. Salyer, 852-3947, malana.salyer@louisville.edu.

Seeing Past My Sex: Female Leadership in Communication. A panel discussion exploring the historical development and the challenges for women leading large advertising and public relations organizations. 12:00 pm, I-Comm Communication Club/ Department of Communication,

Mastersons, 1830 South Third. William Thompson, 852-8169, wethom01@louisville.edu

Saturday, March 31

The Sistah Summit: Sisterhood, Sexuality, and Spirituality-Facing Our Issues. A Day-long summit to initiate dialogue, leadership, and collaboration on issues impacting the success of and relationships among academic, professional, and grassroots Black women in the Metro area. Speakers are: Sheila Sutton, Seattle, Washington; Dr. Tomarra Adams, UofL; Dr. Anita Harris, UofL; Dr. Theresa Rajack-Talley, UofL; Zambia Nkrumah, Gwen Snow; Atlanta, Georgia; F. Joyce Lewis; Chicago, Illinois; Dr. Renee Mapp-Campbell; Rev. Barbara Heard, Chicago, Illinois; among others. Free and open to the public. 8:30 am-5:30 pm, Office of the Vice Provost for Diversity and Equal Opportunity, Muhammad Ali Center on 6th and Main. Diane Whitlock and Bani Hines-Hudson, 852-5719, dlwhit01@louisville.edu, bhineshudson@yahoo.com.

APRIL

Tuesday, April 3

Business and Professional Women/ Louisville Organization Meeting. A regular organization meeting open to the public. Sheila Johnson will discuss financial planning. Brown bag your lunch. RSVP if you plan to attend. 12:00-1:00 pm, Business and Professional Women/Louisville, University Club Belknap Campus, second floor conference room. Anita Ellison, 964-331.

Thursday, April 5

Women's Transformation Tea. An open forum for women of color and their friends at the University. The purpose of the tea is to afford women of color and their allies an opportunity to share concerns, problems, and positive suggestions. 3:00 pm-5:00 pm, Office of Commissions, Masterson's Restaurant. Georgette L. Moore, 852-2029, glmoor01@gwise.louisville.edu.

Tuesday, April 24

"UnHappy Hour." Equal Pay Day is observed in April to indicate how far into each year a woman must work to earn as much as a man earned in the previous year. 5:30-7:00 pm, Business and Professional Women/Louisville, Molly Malone's, 933 Baxter Ave. Valerie Casey, 852-7715.

— SIGNING IN —

Terra Simms



Terra Simms, MSSW student intern for the 2006-2007 academic year at the University of Louisville Women's Center. I chose the Women's Center because of my disconnect with women in the community. My area of interest has exclusively been women in sports. I advocated for female athletes' physical, mental, emotional, and human development in the secondary and higher educational institutions in my native state of Oklahoma. I want to learn more about how the Women's Center connects U of L's campus to the Louisville community, so that I can assist in establishing a connection between female athletes and the community that views them as role models. At the Center, I will create workshops, learn event planning, and attempt grant writing. When I am not at the Center or in class, I am usually on a Rugby pitch or at the Louisville Cardinal Student Newspaper.

Preventing Sexual Harassment

Preventing Sexual Harassment is an interactive web-based training program that provides an innovative way for you to gain a basic understanding of what constitutes sexual harassment as well as what is and what is not acceptable in today's environment. The program provides a means for you to evaluate your understanding and answers common questions. You work through the program at your own pace. The program is used as a point of reference and does not replace training provided by the Affirmative Action/Employee Relations Office. Training is available at <http://training.newmedialearning.com/psh/louisville/index.htm>

Melanie Evans



Melanie Evans is the volunteer coordinator for the PEACC Program. She is pursuing a master's degree in College Student Personnel at the University of Louisville. She is also a graduate hall director for Bellarmine University. Melanie graduated from Western Kentucky University with a bachelor's degree in Corporate and Organizational Communication. While living in Bowling Green, Kentucky, Melanie developed a passion for working with women's issues through volunteering for five years at Hope Harbor, Inc., a rape crisis and prevention center. She is excited to work with PEACC to help educate the campus and community about issues of violence against women.

Toya Ballenger



Toya Ballenger is a Student Assistant at the Women's Center and an assistant for the Help Desk at the Miller Institute Technology Center. She is an English major from Middlesboro, Kentucky. Her involvement includes membership in Harlan Scholars, Porter Scholars, African-American Caucus of English Scholars, Conquerors Through Christ, Black Diamond Choir, and Association of Black Students. Toya plans to attend law school in the future.

Women in Politics

On January 4, 2007, Nancy Patricia D'Alesandro Pelosi was sworn in as Speaker of the House, becoming the first woman and the first Italian American in U.S. History to become Majority Leader for the United States House of Representatives.

At this writing, the minimum-wage debate continues in the Senate. The bill passed by the House of Representatives would raise the minimum-wage from \$5.15/hour to \$7.25/hour over two years. According the Bureau of Labor Statistics, 60% of workers earning a minimum wage are employed by restaurants and bars, and 2/3 of them are women. A minimum-wage increase would raise the wages of nearly 15 million workers (11% of the workforce).

On January 12, 2007, President Bush signed Johanna's law, which authorizes a national gynecologic cancer early detection and awareness campaign directed at women and their providers.

Congratulations to

Angel McCoughtry for being selected by the John R. Wooden Award Committee as a Midseason All-American Team member for the Women's Wooden Award. The midseason list includes the top 20 players to this point in the season who will contend for this year's player of the year award.

The Women's Basketball Team and their coaches, for being nationally ranked for the first time since becoming a NCAA competitor in 1974.

Brenda D. Gunn the winner of the 2007 Louisville Metro Human Relations Commission Eleanor Young Love Award for Outstanding Service.

Shin-je Ghim, Ph.D., a U of L Asst. Professor in the Cancer Center who is part of the original team that invented the HPV vaccine that neutralizes the human papilloma virus (HPV), the major cause of cervical cancer.

Gender Equity *(continued from page 2)*

are more UofL women in leadership positions in 2007 than in 1999. Yet the glass ceiling remains in place for UofL's *most* senior leadership. (A parallel observation could be made about racial and ethnic diversity.) We recognize that describing this phenom-

enon is different from identifying its causes, and also that questions about gender and race in higher education are some of the most difficult ones facing our country today. However, we also know that Louisville is becoming more diverse. Thus, UofL's commitment to

educating Kentucky citizens for an increasingly complex world demands that the university prioritize gender equity and racial equality in our own academic enterprise.

* http://louisville.edu/about/org_chart.pdf

The American Association of University Professors Faculty Gender Equity Indicators 2006

By Martha S. West and John W. Curtis

Benchmarks	Full-Time		Part-Time		Non-Track		Tenure-Track		Tenured		Full-Professor		Salary (As pct of men)			
	W	M	W	M	W	M	W	M	W	M	W	M	Prof	Assoc	Asst	All
U Alabama-Birmingham	37.1	62.9	42.7	57.3	51	49	49	51	27.6	72.4	16.5	83.5	86.8	96.2	94.5	81.2
U Cal-Irvine	31.8	68.2	40.1	59.3	46.5	53.5	39.9	60.1	25.8	74.2	20.4	79.6	93.3	97	95.9	81.8
U Cal-SD	25.5	74.5	33.3	66.7	53.1	46.9	35.1	64.9	19.1	80.9	14.3	85.7	89.9	91.3	92.8	75.4
U S Florida	42	58	39.1	60.9	58.4	41.6	47.2	52.8	31.3	68.7	22	78	88.8	89.9	89.8	79.1
U Iowa	32.3	67.7	48.7	51.3	0	0	41.5	58.5	29.2	70.8	20.1	79.9	89.6	92.3	97	82.7
U Illinois -Chicago	36	64	39.7	60.3	52.7	47.3	52.7	47.3	28.7	71.3	23.9	76.1	95.3	93.4	92.2	85.1
U Louisville	37.3	62.7	44.2	55.8	59.7	40.3	44.6	55.4	27.1	72.9	22.3	77.7	93.7	88.2	96	78.5
Wayne St	38.7	61.3	50	50	58	42	47	53	26	74	17.4	82.6	97.2	95.5	101.1	82.2
U N C- Chapel Hill	37.3	62.7	48.9	51.1	58.4	41.6	42.5	57.5	27.6	72.4	21.7	78.3	91.7	91.6	93.2	76.9
U New Mexico- Main	40.1	59.9	53.8	46.2	50	50	43.2	56.8	36.7	63.3	26.5	73.5	94.7	91	89.8	84.9
SUNY- Buffalo	32.9	67.1	44.2	55.8	55.1	44.9	38.9	61.1	22.3	77.7	15.2	84.8	89.5	95.2	89.4	78.6
SUNY- Stony Brook	32.2	67.8	42.2	57.8	52.1	47.9	32	68	23.4	76.6	17.2	82.8	95.8	95.5	96.2	80.7
U Cincinnati	38.4	61.6	47.7	52.3	63.4	36.6	51.2	48.8	27.4	72.6	21.7	78.3	89.1	88.4	93	77.7
Temple	37.5	62.5	40.6	59.4	46.4	53.6	51.2	48.8	30.4	69.6	22.8	77.2	92.5	92.5	100.6	83.4
U Pittsburgh	37.8	62.2	51.6	48.4	56.8	43.2	42.7	57.3	24.1	75.9	21.2	78.8	87.9	92.4	88.2	74.8
U South Carolina	34.8	65.2	41.9	58.1	59.4	40.6	42.2	57.8	24.1	75.9	15	85	93.1	93.1	83.2	75.9
U Utah	36.9	63.1	40.2	59.8	57.9	42.1	42.3	57.7	24.8	75.2	18.1	81.9	90.7	102.4	89.1	78.9
VCU	43.8	56.2	51.4	48.6	61.1	38.9	40.1	59.9	32.8	67.2	20.5	79.5	94.7	93.2	89.5	81.4
Kentucky Public																
	Full-Time		Part-Time		Non-Track		Tenure-Track		Tenured		Full-Professor		Salary (As pct of men)			
	W	M	W	M	W	M	W	M	W	M	W	M	Prof	Assoc	Asst	All
U Kentucky	30.8	69.2	44.2	55.8	61	39	36.1	63.9	25.8	74.2	15.3	84.7	95.1	94.3	91.4	82.6
U Louisville	37.3	62.7	44.2	55.8	59.7	40.3	44.6	55.4	27.1	72.9	22.3	77.7	93.7	88.2	96	78.5
Eastern Kentucky U	46.8	53.2	56.5	43.5	49.4	50.6	45.5	54.5	46.7	53.3	31	69	90.8	96.2	94.9	89.9
Morehead St U	45.2	54.8	56.4	43.6	64.8	35.2	46	54	37.2	62.8	17.9	82.1	105.4	97.8	88.7	86.3
Murray St U	37.1	62.9	51.7	48.3	57	43	38.9	61.1	27.9	72.1	16.7	83.3	89.7	97.7	87.1	82.4
Northern Kentucky U	50.5	49.5	52.6	47.4	61.1	38.9	48	52	40.5	59.5	35.6	64.4	91.1	89.6	100.2	84.1
Western Kentucky U	43.5	56.5	52.1	47.9	61.9	38.1	43.1	56.9	34.4	65.6	26	74	95.5	92	91.8	83.7

PEACC Program *(continued from page 1)*

Program to provide services for campus survivors of sexual assault, stalking, and domestic violence. With these funds, the Women's Center created the UofL Prevention, Education, and Advocacy on Campus and in the Community (PEACC) Program, which remains a component of the Women's Center. As Primary Investigator for the PEACC Grant, the

Director of the Women's Center ensured that DOJ funds were used for the statutory purposes of the Campus Grants Program; attended mandatory grant training; served as liaison to the UofL Office of Research; hired, supervised, and developed job descriptions for grant personnel; secured office space for the program; and developed strategies to

secure continuous annually recurring (CAR) funding for PEACC. When federal funding ended on March 31, 2006, CAR funding for the Director of the PEACC Program had been secured. This culminated 25 years of widespread campus advocacy designed to shape appropriate institutional responses to campus victims of violence.

The Women's Center Book Discussion Group

Readers are invited to attend a brown bag luncheon on Tuesday, September 11, 2007. From 12:00 -1:00 pm to discuss *Abundance, A novel of Marie Antoinette* with the author Sena Jeter Naslund. The discussion will be held in the Bingham Humanities Colloquium Room 300 of the Humanities Building on the Belknap Campus.

In this book, very human Marie Antoinette invites readers to live her story as she herself experiences it. From the lush gardens of Versailles to the lights and gaiety of Paris, the verdant countryside of France, and finally the stark and terrifying isolation of a prison cell, the young queen's life is joyful, poignant, and harrowing by turns. As her world of unprecedented royal splendor crumbles, the charming Marie Antoinette matures into a heroine of inspiring stature, one whose nobility arises not from the circumstance of her birth but from her courageous spirit.

Plan on joining us for this fun and interesting discussion with the author. For information, contact the Women's Center at 852-8976.

Katha Pollitt

(continued from page 1)

give the 2007 Minx Auerbach Lecture because of her insightful essays on women, gender, class, and race in the U.S.A. Her recent essay in *The Nation* (1/4/07) is a good example. In that essay, in which she urges democrats to "think bigger," she discusses programs/initiatives important to gender equity: decent affordable housing, an increase in the minimum wage, single-payer health care, quality childcare, and free or nominal tuition in public universities. These initiatives will help all Americans, but will especially help struggling families and work to insure gender equity.

The Women and Gender Studies Department urges everyone on the UofL campus and in the Greater-Louisville community to attend Katha Pollitt's March 28 presentation. For more information about the event, please call the Department of Women's and Gender Studies office, 852-8160.

The Women's Center News

University of Louisville
Louisville, KY 40292

Return Service Requested

It's Worth A Look: Six new scholarships!

The College of Arts and Sciences Announces

Louisville, KY 40292. (502) 852-6490 or rtaylor@louisville.edu; fax: 852-6888. Deadline for applications is March 21, 2007.

The 2007-2008 ARTHUR D. YOCUM Scholarship

The Arthur D. Yocom Scholarship of \$1,000 will be awarded to an undergraduate student who plans a career in public or community service. Applications from non-traditional students are encouraged.

The Ken Terrill Memorial Award

The award will be made to help defray the college expenses of a U of L undergraduate student who has demonstrated leadership in or service to the gay, lesbian, and bisexual community of U of L or the greater Louisville metropolitan area. Undergraduate students may apply by submitting a letter describing their leadership and service in the gay, lesbian, and bisexual community.

The Wilma Shaw Roseman Scholarship

The Wilma Shaw Roseman Scholarships assist full-time undergraduate students in the College of Arts and Sciences who are strongly motivated to complete their degrees and who have substantial financial need. The minimum Roseman Award is \$3,000.

For more information, contact Dr. Roselle Taylor, Assistant Dean, College of Arts and Sciences, University of Louisville,

The Red Barn Alumni Association Announces

The Red Barn Alumni Association is a voluntary organization designed to provide support to students actively involved in student activities at U of L. **Florence M. Strickler**, the spouse of Dr. Woodrow Strickler, former U of L President who established the Red Barn in 1969 **will award two \$800 scholarships** for the Fall 2007 semester.

The Essie Jenkins Torchbearer Scholarship will award two \$300 scholarships to African-American Students in the College of Arts & Sciences. For information contact George Howe, Director Red Barn Programs Office at 852-7467 or e-mail gjhowe01@gwise.louisville.edu

The Dennis C. Golden Torchbearer Scholarship will award two \$300 scholarships. To be eligible for this scholarship a student must be in good academic standing and be enrolled in at least 6 hours in the semester for which the scholarship is awarded.

For information contact George Howe, Director Red Barn Programs Office at 852-7467 or e-mail gjhowe01@gwise.louisville.edu. Deadline for applications is April 23, 2007, by 5PM