



U^{OF}L WOMEN'S CENTER NEWSLETTER

**FALL 2024:
OCTOBER 2ND, 2024**

**A PLACE WHERE ALL ARE WELCOMED TO ENGAGE IN ACHIEVING
GENDER-EQUITY & SOCIAL JUSTICE.**

ADVOCACY

EDUCATION

EMPOWERMENT

ACTION

Stay up to date on upcoming events and opportunities during the school year, but as always, for the most up-to-date information, visit our [website](#) and follow us on [Instagram](#).

MESSAGE FROM THE INTERIM DIRECTOR	PAGE 2
LGBTQ+ PRIDE MONTH	PAGE 3
UPCOMING WOMEN'S CENTER EVENTS	PAGE 4
RAISE SOME L & CONNECT WITH US!	PAGE 5
LOOKING BACK	PAGE 6
CULTURAL & EQUITY CENTER & LATINA EQUAL PAY DAY	PAGE 7
GRANDMOTHER POWER!	PAGE 8
GET INVOLVED WITH OUR GROUPS & UPCOMING EVENTS	PAGE 9 - 11
STUDENT-PARENT CONNECTIONS	PAGE 12
ADVOCACY IN ACTION & VOTER ENGAGEMENT	PAGES 13 - 16
25 YEARS OF PEACC	PAGE 17
COMMUNITY & RESOURCES	PAGE 18 - 20
LOOKING BACK	PAGE 21

MESSAGE FROM THE INTERIM DIRECTOR

Happy PRIDE Month!

The cool thing about being at UofL, we get to celebrate and honor our **PRIDE** again in October! There will be lots of fun and educational activities throughout the month including events hosted by the LGBT Center. Learn more about the LGBT Center, events, and opportunities on page 3.

Belknap LGBT Center PRIDE Month Events & Campus Resources

- **Global Humanities Lecture** | October 10th, 4 PM, Ekstrom Library
- **Pride Keynote Presentation** | October 10th, 6 PM, SAC Ballroom
- **NPHC Hidden Figures** | October 11th, 12 PM, Cultural and Equity Center
- **Can I Come Too?** | October 14th, 4 PM, Location TBD

- [LGBTQ+ Faculty and Staff Association](#)
- [LGBTQ+ Affirming Healthcare Series](#)
- [PRIDE Alumni Council](#)
- [LGBTQ Studies \(Minor\)](#)
- [Cardinal Drag Haus](#)
- [SHADES](#)
- [SAGA](#)
- [Fellowship of Christian Queers](#)
- [Speed Spectrum](#)
- Free Space
- [HSC Pride](#)
- [Lambda Law Caucus](#)
- RNbow Pride - Nursing Students Org

Jamieca's Tips for Success

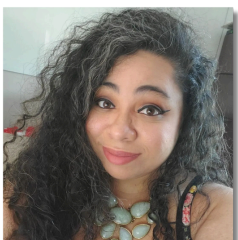
Treat Yo Self

Mid-term season is here! If the semester hadn't kicked in yet, I'm sure it has by now. More than ever, make sure you are taking time out for taking care of yourself and doing things that bring you joy. Listen to music. Read a book. Take a nap. Grab lunch with a friend. It doesn't have to be something extravagant like a day at the spa which is still nice. The **Counseling Center** and **Health Promotion** are great campus resources to help you navigate the tougher days.

Fall Transitions

I love the fall. Cozy sweaters. Hot chocolate. Chili. Especially for folks not from Louisville, I encourage you to visit see all that Fall brings to Louisville. Go to one of our many local coffee and tea shops like **Sis Got Tea**, a Black-, Queer-, Woman-owned business. See the fall colors at one of our many parks like Cherokee Park. Take a walk through the Speed Art Museum, FREE to all UofL students, Faculty and Staff. Just get out and explore!

Stop by and see us in the Cultural & Equity Center! A great place to study (we have study rooms), hang out with friends, and get connected to the amazing CEC team and our resources.



In solidarity,

Jamieca Jones, MSSW, M.A.
Interim Director, Women's Center

Don't forget to register and vote!

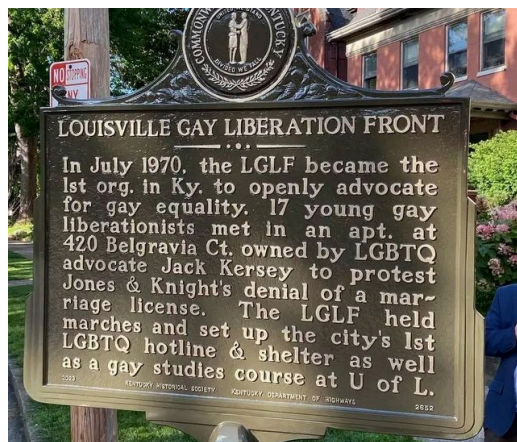
LGBTQ+ PRIDE MONTH

Reflect. Empower. Unite.

GET CONNECTED WITH UOFL'S LGBT CENTER



CHECK OUT
PRIDE MONTH EVENTS



FALL 2024 AT THE WOMEN'S CENTER

RELATIONSHIPS UNPLUGGED

OCTOBER 3RD | 5-6PM, SHUMAKER RESEARCH BUILDING 139

CHARITY BARN BASH | WOMEN 4 WOMEN STUDENT BOARD

OCTOBER 11TH | 7-10PM, RED BARN

VIRTUAL LUNCH WITH THE WOMEN'S CENTER

OCTOBER 23RD | 12-1PM, MICROSOFT TEAMS

BREAKING BARRIERS IN THE WORKPLACE: EMPOWERING LESSONS FROM WOMEN & FEMME LEADERS

NOVEMBER 12TH | 12-1:30PM, CULTURAL & EQUITY CENTER MPR

STUDENT-PARENT WINTER WONDERLAND

DECEMBER 4TH | 12-5PM, CULTURAL & EQUITY CENTER MPR

SPRING 2025

STUDENT-PARENT CIRCLE

FEBRUARY 19TH | 11AM-1PM, CULTURAL & EQUITY CENTER MPR

GENDER, EQUITY, & CLIMATE JUSTICE CONFERENCE

FEBRUARY 20TH, | 10AM-2:30PM, MICROSOFT TEAMS

19TH ANNUAL KENTUCKY WOMEN'S BOOK FESTIVAL

MARCH 2025

WOMEN'S EMPOWERMENT AWARDS LUNCHEON

MARCH 25TH | 11AM-1PM, TBA

Women's Center Programming Committees

- 2024-2025 Programming
- Women's Center Marketing Team
- Kentucky Women's Book Festival Committee
- Gender, Equity, & Climate Justice Conference Committee
- Internships
- Volunteer

GET INVOLVED!

Interested?

EMAIL:
WOMENCTR@LOUISVILLE.EDU

RAISE SOME L



Oct. 15-16, 2024

RaiseSomeL.org

Support the Women's Center and help up #RaiseSomeL!

- Student Scholarships & Awards
- Women's Center Student Support Fund
- Student Success Initiatives
- Women's Center Programming
- Student-Parents Support
- Student Support Fund



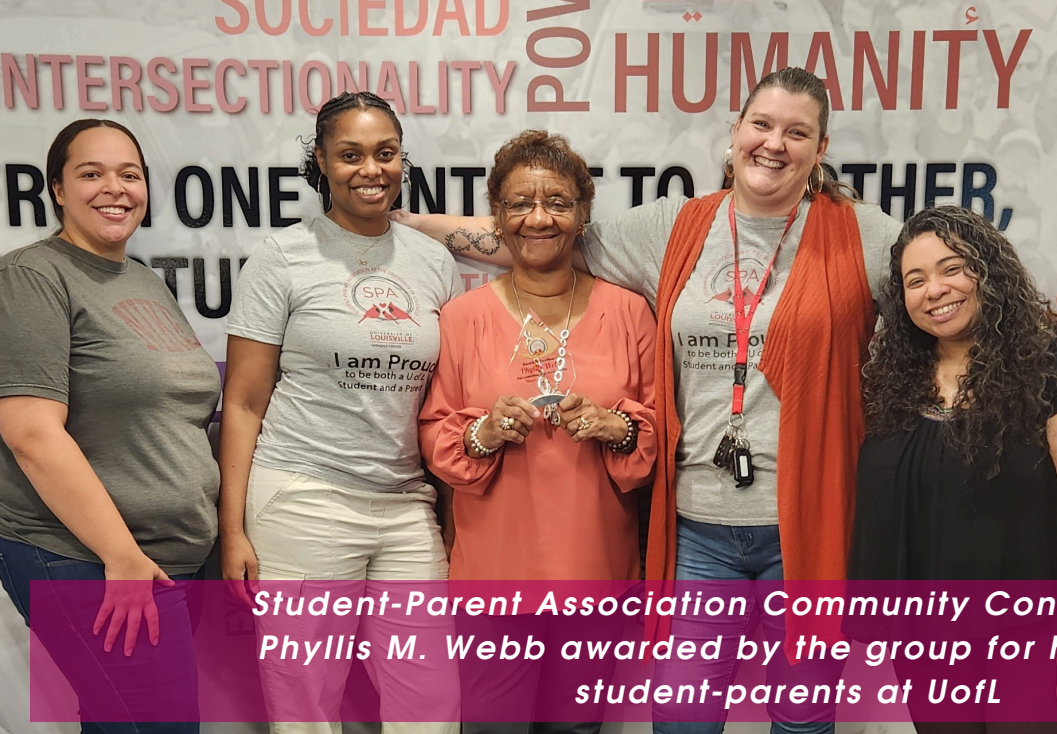
Connect with Us!



Jamieca Jones, MSSW, M.A.
Interim Director & Women's
Center Coach
(She/Her)
Email: jajone19@louisville.edu
Contact me if you're interested
in leadership!



Phyllis Webb, M.A.Ed
Program Coordinator &
Women's Center Coach
(She/Her)
Email: pmwebb01@louisville.edu
Contact me if you're a student-
parent!



*Student-Parent Association Community Connections Event
Phyllis M. Webb awarded by the group for her support of
student-parents at UofL*



Student-Parent Circle



Feminist Space: The History of Voting



*Women's Equality Day Scavenger Hunt Winners
Grisha Bhatia (left) and Trina Johnson (right).*



*Brown Cancer Center
Mammogram
Screening*

**SUBMIT AN EVENT TO OUR
NEWSLETTER**

CULTURAL & EQUITY CENTERS

CULTURAL CENTER

LGBT CENTER

**MUHUMMAD ALI INSTITUTE FOR
PEACE & JUSTICE**

**INCLUSIVE EXCELLENCE AND BELONGING
OPPORTUNITIES AT THE UNIVERSITY OF
LOUISVILLE**

WOMEN'S CENTER



**LATINA
EQUAL PAY
DAY**



TIME TO TALK EQUITY.



12:30 - 2PM



THURS. OCTOBER 3



RED BARN





GRANDMOTHER POWER!

ORAL HISTORY PROJECT

Interviews resume in September.
Submit a photo of your grandmother
for our social media campaign!



Learn more!



GRANDMOTHER POWER! ORAL HISTORY PROJECT KICK-OFF

SCHEDULE AN INTERVIEW!

What thoughts, dreams or choices did my grandmother make – when she was my age? How has the world changed in her lifetime? What can I learn from her?

Join the Women's Center at Grandmother Power! Oral History Project featuring multicultural stories between grandmothers and their grandchildren in Kentucky. The conversations will amplify the power of intergenerational connections, cultural knowledge, and reflection about gender equity issues across time with project participants. The Women's Center's project will be a collaboration with the UofL Ekstrom Library's [Oral History Center](#).

GRANDMOTHER POWER!

ORAL HISTORY PROJECT PHOTO CAMPAIGN

We want to honor and acknowledge your grandmothers! Photos will be featured on social media and in our monthly Newsletter. [Make a submission](#)



DID YOU KNOW?

ALL UofL students can get a FREE American Association of University Women membership?

- Apply to scholarships
- Free Salary Negotiation Workshops Access
- Attend the National Conference for College Women Student Leaders



AAUW at UofL Leadership Positions Open!

Email womenctr@louisville.edu

GET INVOLVED WITH OUR GROUPS!

American Association of University Women

[GET CONNECTED](#)

Student-Parent Association

[GET CONNECTED](#)

United Nations Association - Women

[GET CONNECTED](#)

Women 4 Women Student Board

[GET CONNECTED](#)

Feminist Social Justice Leadership TC

CONTACT:
JAMIECA.JONES@LOUISVILLE.EDU

Women's Center Dr. M. Celeste Nichols Award

UP TO \$500 FOR GRADUATE STUDENTS!

Applications Open: October 1st, 2024
Deadline: December 1st, 2024
[Apply](#)



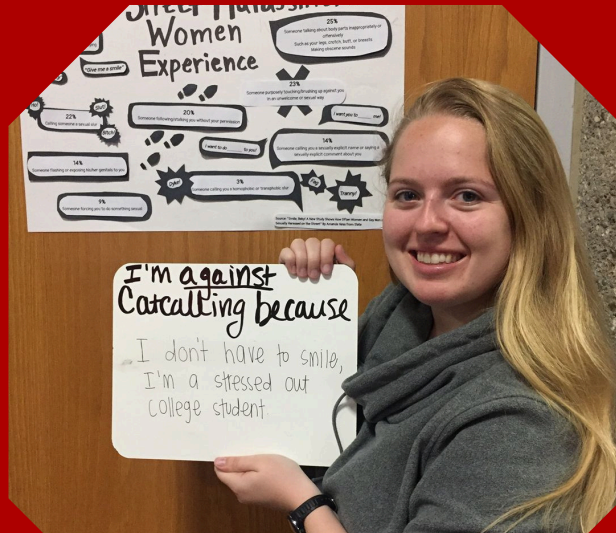
Interested in student leadership opportunities?

Contact us!
womenctr@louisville.edu



Women's Center Global Trip to Morocco (2015)

Cards Against Catcalling (2018)



THROWBACK

WOMEN 4 WOMEN PRESENTS:

U of L Barn Bash

A Charity Event!

A BENEFIT FOR:



FOOD
MUSIC
GIVEAWAYS
& MORE!

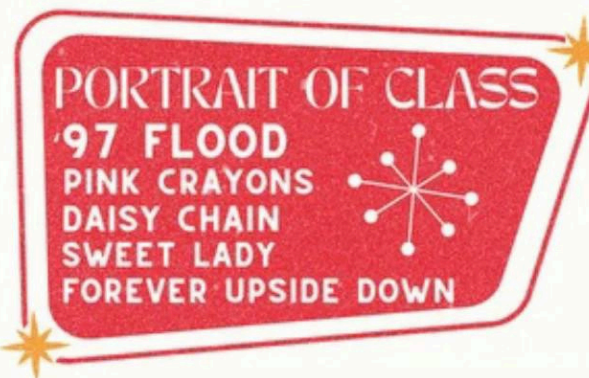


OCT
11TH
7-10PM



\$10 ONLINE
\$15 DOOR

TICKET PURCHASE COMES WITH A MEAL FROM CHICK-FILA
AND 1 ENTRY INTO THE SILENT AUCTION



SPONSORS:



THE LYNCH FAMILY

amazon

UofL Barn Bash

The Charity Barn Bash is a concert to raise money for a local charity that provides emergency housing to women who are getting out of domestic violence and sex trafficking situations. Use our link tree to follow our Instagram and buy tickets:

linktr.ee/UofLBarnBash
\$15 online/\$20 door



Women 4 Women Student Board is an organization advised by the Women's Center.

UNITED NATIONS DAY

UNITED NATIONS ASSOCIATION - KENTUCKY DIVISION

GenX: The Saga of Forever Chemicals

Produced by actor Mark Ruffalo

October 28, 2024 (Monday), 7:00 P.M. – 9:00 P.M.

Lang House, 115 S. Ewing Avenue, Louisville, KY 40206 or [Zoom](#)

Special Guest: Rob Bilott, Attorney, Author

Snacks & refreshments provided. Preview screening documentary film segments about the worst pollution crisis in world

Limited parking behind building or parking on street
Snacks & Refreshments

Preview screening documentary film segments about the worst pollution crisis in world

Questions? Contact Teena Halbig, TeenaHal@aol.com

A symbol of hope for global unity, United Nations Day on 24 October marks the anniversary of the UN founded in 1945.

United Nations Association - Women at UofL is a sponsor.

RELATIONSHIPS UNPLUGGED

LEARN ABOUT HEALTHY RELATIONSHIPS AND CAMPUS RESOURCES FOR STAYING SAFE AND DO SOME FUN ACTIVITIES

OCTOBER 3
THURSDAY
5 PM - 6 PM
SHUMAKER 139

PEACC Center
UL OF WOMEN'S CENTER



UNA-Women, Louisville Students for Justice for Palestine, Middle Eastern and North African Student Association, and UNICEF present

WOMEN IN PALESTINE

Shumaker 139 | Tuesday, Oct. 8th | 5 PM

JOIN UNA WOMEN

for a

Volunteering Opportunity at La Casita Center Fundraising Gala

Bellarmine University
October 19 4-9pm



LA CASITA CENTER

UNITED NATIONS ASSOCIATION OF THE UNITED STATES OF AMERICA
UNA Women University of Louisville Chapter

HALLOWEEN SOCIAL



OCTOBER 31ST, 5 PM - 6 PM

HUMANITIES 114



UNA-Women and Cardinal Drag Haus Present... WOMEN OF PRIDE

Shumaker 139

October 22nd 5:00-6:00pm



STUDENT - PARENT CONNECTIONS



Cishella Durling,
Student-Parent
Association
President

In 2011, a group of determined student-parents came together to create the Student-Parent Association (SPA), recognizing how important it is to support fellow students navigating the challenges of parenthood while pursuing their education. Fast forward to 2024, and SPA is still going strong, passionately amplifying the voices of student-parents at UofL.

The need for community is universal, and SPA knows this better than anyone. As both students and parents, this group finds themselves at a unique crossroads—one that's often overlooked by universities. From a lack of affordable family housing to limited childcare support and resources, student-parents face challenges that deserve more attention.

To help bridge these gaps, SPA teamed up with the UofL Women's Center to create a brand-new Community Connections Resource Guide. This guide is packed with useful resources designed to make the journey a little smoother for student-parents.

During the unveiling of this guide, SPA took a moment to honor their advisor, Phyllis Webb, Program Coordinator of the Women's Center, with an Award of Excellence for her incredible dedication and commitment to supporting student-parents. A well-deserved shoutout for an outstanding advocate!

COMMUNITY CONNECTIONS RESOURCE GUIDE

STUDENT-PARENT CONNECTIONS INTEREST FORM

STUDENT-PARENT ASSOCIATION



The Student-Parent Association is a student organization advised under the Women's Center.

ADVOCACY IN ACTION

Diversity in Education



Taylor Martin (She/Her) Class of 2025
United Nations Association - Women Advocacy Chair

Historical Context

The University of Louisville has a history of witnessing the power of collective action. Students, teachers, and community members have allied to demand changes to the University's demographics, curriculum, and initiatives to create a diverse, equitable, and inclusive institution. In 1950, the University responded to increasing pressures and officially desegregated its schools in 1951, three years before the United States Supreme Court ruled that segregated schools were unconstitutional. In continuation with the momentum for social change, Black students led the fight in the late 1960s and early 1970s to demand curriculums that reflected the ideals of democracy and diversity the nation was beginning to champion. Their leadership and activism established the Pan-African Studies Department and paved the way for additional departments, such as Latin American Studies and Women, Gender, and Sexuality Studies.

In the years following, the University established and promoted various initiatives to help foster inclusivity, accessibility, and diversity. For instance, scholarships and financial aid, namely the Woodford F. Porter Scholarship Program and the Martin Luther King Jr. Scholars Program, were established to act as a great equalizer in education and provide minority students the opportunity to earn a college degree without the fear of excessive student debt. Moreover, programs like the Cultural Center, Muhammad Ali Institute for Peace and Justice, the Women's Center, and the LGBT Center were founded to enhance students' sense of belonging by facilitating community-building across different identities. Such initiatives have played a crucial role in addressing historical barriers and positively shaping students' experiences in higher education.

Current Context

In the last legislative session, the Kentucky General Assembly attempted to pass anti-DEI bills, which would have barred colleges and universities from spending 'any resources' on 'diversity, equity and inclusion offices' or 'initiatives.' University leaders released statements condemning the bills, and students joined the opposition, hosting rallies across the Commonwealth. Despite public criticism, the Kentucky General Assembly reaffirmed its intent to continue its efforts this year. Succumbing to political pressures, the University of Kentucky and Northern Kentucky University disbanded their offices responsible for diversity initiatives in August. In September, representatives from Kentucky's higher education institutions presented their impact reports to lawmakers who questioned and dismissed its significance. The question now is, will you stand by and watch as lawmakers, who are predominately white males, strip colleges and universities of diversity initiatives? You, the audience, have the power to shape history with your actions. Do you care about students of all backgrounds feeling welcomed and supported in higher education? How do you want history to remember your actions?

Action Plan

- [Register to vote by October 7th](#) and make your voice heard on [Election Day, November 5th](#)
- [Contact your legislators](#) to affirm your support for DEI in higher education
- Collaborate with school and community organizations to protest against curtailing DEI in colleges
- Urge your school representatives to defend and protect DEI
- Spread the word about attacks on DEI and encourage others to take action

VOTER ENGAGEMENT EVENTS

UNA-Women and League of Women Voters

October 10, 2024

Tabling at UofL

- **Where:** West Plaza by Red Barn
- **When:** 11:00 a.m. to 1:00 p.m.
- **What:** Nonpartisan “Get Out the Vote” efforts with incentives for participants

Canvassing around UofL

- **Where:** Meet at Red Barn and canvass neighborhoods surrounding campus
- **When:** 5:00 p.m. to 7:00 p.m.
- **What:** Nonpartisan “Get Out the Vote” efforts. Volunteers will receive a free League of Women Voters t-shirt



October 26, 2024

Day of Action: Canvassing in Louisville

- **Where:** Meet at Shawnee Library and canvass surrounding neighborhoods
- **When:** 10:00 a.m. to 12:00 p.m. and 12:30 p.m. to 2:30 p.m.
- **What:** Nonpartisan “Get Out the Vote” efforts. Volunteers will receive free food and drinks

RSVP FOR EVENTS ON MOBILIZE



Tabling at UofL



Canvassing around UofL



Day of Action

Andrew Goodman Foundation Vote Everywhere Programming Fall 2024

Campus Champion: Alarah Gillum, adgill02@louisville.edu

Vote Everywhere Ambassadors:

Kelsey Raymer, kelsey.raymer@louisville.edu

Ella McCutchen, ella.mccutchen@louisville.edu

Date and Time	Event Name	Event Description	Event Location
August			
8/16 – 7pm-9pm	Welcome Week Tabling	Tabling to introduce students to Vote Everywhere Program	SRC, Night at the Rec
8/17 – 1pm-3pm	Welcome Week Tabling	Tabling to introduce students to Vote Everywhere Program	2020 Quad, Icebreaker Event
8/17 – 1pm-5pm	Welcome Week Tabling	Tabling to introduce students to Vote Everywhere Program	SAC 2 nd Floor, Cardinal Lounge
September			
9/11 – 5pm-6pm	AKA Voter Education Tabling	Tabling to register students to vote	Red Barn
9/19 – 8am-10am	Good Morning Commuters Tabling	Tabling to register commuter students to vote	Red Barn
9/21 – 11am-1pm	Door Knocking with NCNW (National Council of Negro Women)	Canvassing to register community members to vote	Old Louisville
October			
10/7 – 10am-12pm	Donuts & Democracy	Last day to register for November election! Passing out donuts and registering students to vote	Humanities Quad
10/8 – 2pm-3pm	Chips, Dips, and Ballot Tips	Students learn who is on the ballot in November, see a sample ballot, are given presentation on each candidate and what they believe. Various chips and dips will be provided for students who attend.	Cultural Center MPR
10/9 – 8pm-11pm	Presidential Debate Watch Party	Watch party to view the final presidential debate. Will provide popcorn and toppings for popcorn. Candy for sale for civic engagement programmes.	Chao Auditorium (unconfirmed)
10/10 – 4pm-6pm	Service Opportunity with League of Women Voters	Students may serve with League of Women Voters on an event to promote voter turnout in the November election	Old Louisville

10/11 – 12pm-1pm	Lunch & Learn: How to Stay Civically Engaged	This will be the final celebration lunch for "National Voter Education Week" for students to learn how to stay engaged through the election and beyond. Meal will be catered from outside vendor. Set up will begin at 11:30, event begins at 12:00, event will end around 1:00.	Red Barn
10/18 - ???	Panel with Honors Student Council	Panel with local and state representatives	
10/30 – 11:30am-1:30pm	Don't Wing It! Make a Plan to Vote!	Early voting begins on 31st. Ask students to make a plan to vote (aka to not wing it) and to think through transportation, work schedule, etc. Give out wings from local wing spot.	SAC West Plaza

November

11/4 – 11am-2pm	Rock the Vote Party	Getting students excited to vote across campus, passing out voter education materials, sample ballots, and Vote Everywhere swag	SAC West Plaza, Humanities Quad, 2020 Quad (BAB)
11/5 – 8am-6pm	Election Day! Roll to the Polls with SGA and Athletics	Hourly bus rides to local polling location for students registered at UofL	SAC Welcome Desk (by the bookstore)
11/6 – All day	Post-Election Event with Counselling Center and Cultural & Equity Center	Allow space for reflection post-election for any student who feels big emotions	
11/11 - ???	Power to the People: Minorities in Political Activism	In partnership with ELSB Equity & Justice Committee	

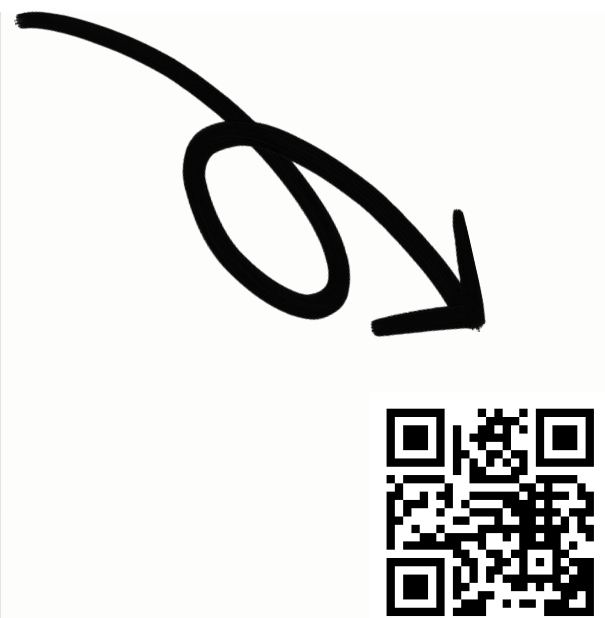
Everything you need to vote

VOTE.ORG

Everything You Need to Vote

Register to vote. Check your registration status. Get your absentee ballot. Fast, free, easy, secure, nonpartisan.

vote.org



Events

October

- Drop-In Collage Day at PEACC 10.11
- Purple Thursday for Domestic Violence Awareness Month 10.17

November

- Give Some PEACC Holiday Drive 10.13 - 12.2
- Screening of How to Start a Wildfire 11.14

December

- Beautiful People Reading Day at PEACC 12.3
- Drop-In Collage Day at PEACC 12.9

25 years of...

PEACC

UNIVERSITY OF LOUISVILLE

Anniversary Open House

Help us honor the PEACC Center's 25th anniversary! Join us for cake and coffee, giveaways, and inspiration from our PEACC community.

8

2-4 PM

OCTOBER

PEACC Center
W309-H Student Activities Center
University of Louisville

FOR QUESTIONS & FURTHER INFORMATION:

502-852-2663

peacc@louisville.edu

Learn more on PEACC Engage



No one has to do everything... everyone has to do something. What's your Green Dot?



Green Dot is a comprehensive violence prevention strategy with a focus on preventing Power Based Personal Violence; sexual violence, dating violence and stalking. The strategy incorporates a public health approach to violence prevention, by working across the socio-ecological model. Green dots are the small actions we take everyday that will shift our culture to one where Power Based Personal Violence is not accepted.

[Learn more about Green Dot](#)



@uoflgreendot

WE'RE ALL
in this
TOGETHER

The
PEACC
CENTER

Prevention, Education and Advocacy
on Campus and the Community

PEACC provides confidential advocacy to students, faculty and staff who have been impacted by interpersonal violence, sexual assault and stalking, in addition to providing prevention education.

Belknap Campus, Student Activities Center 309H
M, T, W, F: 9am-5pm
Th: 11am-5pm
Call 852-2663

For after hours emergencies,
contact the 24 hour community crisis line
at 844-BESAFE-1





shared resources
shared outcomes
shared dreams

Incorporated in July 2020, Bringing Justice Home is an all-volunteer nonprofit founded and led by a caring community, including people who are Black, women, LGBTQ, disabled, and progressive Christians. We are inclusive and interfaith in practice, relationally focused, and committed to centering the lived experience of the poor, the marginalized, the disabled, and those with chronic illnesses.

Food justice is social justice.

BLACK BIRTH JUSTICE INC HEALTHY BEGINNINGS CONNECT US

Serving our families with integrity. Creating a refuge for our community.

WHAT WE OFFER:

Cohort Classes:

- Preconception
- Prenatal
- Infant & Toddler
- Multiples
- Guardianship
- Postpartum Doula's
- Fatherhood

Resources:

- Diapers, wipes, Pack'n Plays, car seats, strollers & more!
- Direct connection to mental health services and other healthcare providers

OUR MISSION:

Healthy Beginnings Connect Us (HBCU) empowers families to thrive by promoting holistic well-being, early childhood development, and accessible healthcare. We are committed to fostering connections, knowledge-sharing, and support networks that enhance the physical, mental, and emotional health of children, parents, and caregivers. By building bridges between healthcare providers, social service organizations, educators, and families, we aspire to create a world where every child experiences a healthy and nurturing start, setting the foundation for a brighter future.



SCAN HERE



📞 502-409-4238 ❤️ www.blackbirthjustice.org 📍 1141 S. Second St. Louisville, KY 40203

NOMINATE A STUDENT, FACULTY, STAFF AND/OR COMMUNITY MEMBER/ORGANIZATION!



CHRISTI STEVENS

*Geospatial Analyst/Developer,
Center for Neighborhoods*

COMMUNITY PEARL OF KY SPOTLIGHT

An inclusive leader in the field of GIS, cartography & mapping. She is committed to elevating assets in the work by women and families.



*Learn more about our
Community Pearls!*

BATTLING

Period Poverty in Kentuckiana



Reina Kempt (She/Her)
For Lady's Sake, President and Executive Director

For Lady's Sake is a nonprofit organization committed to ensuring everyone has access to essential period products. It aims to break down barriers and stigmas associated with menstruation, making period products accessible to all.

The organization was founded in 2016 after a Dollar Tree store run by Candice Crawford. A young lady who was standing outside of the store approached her, and Candice thought this would be like every other encounter she had with a person experiencing homelessness -- an ask for money or food. As she reached for her purse to help, the young lady had a different request. She was in need of period products and did not want to soil some of the only clothes she owned. This sparked an idea to fill that need for so many in need, and Candice erected For Lady's Sake in response.

Through our strategic partnership with Jacob's Ladder Outreach, Goodwill and other local organizations, we've been able to provide women with period products on a weekly basis with the aim of expanding our impact. The long-term goal is to install free period product

For Lady's Sake, LLC.

Dining for Dignity

Fundraiser
BREAKFAST

Oct. 19, 2024 | 10 a.m.-12:30 p.m.
Stella's Venue 1348 River Rd, Louisville, KY 40206

Breakfast sponsored by Biscuit Belly
Coffee sponsored by Heine Bros.

Eventbrite tickets \$20
Sponsorship packages available

Hosted by Robin G
and DJ Stacey Broadway
Proclamation, silent auction, mimosa bar

www.forladyssake.com

Biscuit Belly | Amy Hall | HEINE BROTHERS | CANARY CLUB

dispensers in Louisville's public park restrooms.

To raise money toward these efforts, For Lady's Sake will host its inaugural Dining for Dignity Breakfast fundraiser at 10 a.m. Saturday, October 19 at Stella's Venue.

The event's date was intentionally chosen to coincide with National Period Day in an effort to raise awareness and funds to support menstrual equity in the greater Louisville Metropolitan area.

General admission tickets, which include food by Biscuit Belly and

coffee by Heine Bros., are now on sale for \$20 with sponsorship options available. Both can be purchased on Eventbrite by searching "Dining for Dignity" or scanning the QR code above.

Poet extraordinaire Robin G will host the event with DJ Stacey Broadway providing the musical entertainment. Robin G will also be debuting a poem inspired by a woman's experience with menstruation. Other events include a silent auction, a cash mimosa bar and a proclamation presented by Deputy Mayor Nicole George.

ACTORS THEATRE LOUISVILLE AND RHEONNA NICOLE PRESENT

IN SUPPORT OF
DOMESTIC VIOLENCE
AWARENESS MONTH

OCTOBER 26TH
DOORS OPEN
AT 5 PM



316 W. MAIN STREET LOUISVILLE, KY 40202
VENDOR MARKET. PRE-RECEPTION. HOSTED BY 104.7 FM WLOU'S ROBIN G
SPECIAL PERFORMANCE OF THE BROADWAY PRODUCTION COLOR PURPLE BY REDLINE PERFORMING ARTS



TICKETS ARE \$22
ON SALE NOW



RESOURCES

- UofL COUNSELING CENTER**
- Disability Resource Center**
- Writing Center**
- Cardinal Cupboard**
- UofL Concern Center**
- REACH Tutoring**
- Student-Parent Resource Guide**
- Menstrual Freedom Coalition**



Relationships Unplugged (2023)



Friendsgiving (2023)



UNA-Women Tote Party (2023)



Global Trip to India (2018)

UL WOMEN'S CENTER

OUR FUTURE IS INTERSECTIONAL: RE-IMAGINING LEADERSHIP DEVELOPMENT

**UNIVERSITY OF LOUISVILLE WOMEN'S CENTER
120 E. BRANDEIS (BELKNAP)
UNIVERSITY OF LOUISVILLE
LOUISVILLE, KENTUCKY 40292
PHONE (502) 852-8976**

