

UL OF WOMEN'S CENTER NEWSLETTER

**SUMMER EDITION:
JUNE 13, 2024**

**A PLACE WHERE ALL ARE WELCOMED TO ENGAGE IN ACHIEVING
GENDER-EQUITY & SOCIAL JUSTICE.**

ADVOCACY

EDUCATION

EMPOWERMENT

ACTION

Stay up to date on upcoming events and opportunities during the school year, but as always, for the most up-to-date information, visit our website and follow us on Instagram.

SNAPSHOT: REIMAGINING COMMUNITY CONNECTIONS

MESSAGE FROM THE DIRECTOR

STUDENT VOICES

PRIDE MONTH

JUNETEETH EVENTS

GRANDMOTHER POWER! ORAL HISTORY PROJECT

CULTRAL & EQUITY CENTER

GET INVOLVED

OPPORTUNITIES & KY COMMUNITY PEARL

HONORING DR. JABANI BENNETT

UOFL WOMEN'S NETWORK

RESOURCES

CONTACT US

PAGE 2

PAGE 3

PAGES 4 -6

PAGES 7-8

PAGE 9

PAGE 10

PAGE 11

PAGE 12

PAGE 13

PAGE 14

PAGE 15

PAGE 16

A publication of the University of Louisville Women's Center. Produced by Jamieca Jones.

UL OF WOMEN'S CENTER

**OUR FUTURE IS INTERSECTIONAL:
RE-IMAGINING LEADERSHIP DEVELOPMENT**

UNIVERSITY OF LOUISVILLE WOMEN'S CENTER
120 E. BRANDEIS (BELKNAP)
UNIVERSITY OF LOUISVILLE
LOUISVILLE, KENTUCKY 40292

PHONE (502) 852-8976

WOMENCTR@LOUISVILLE.EDU
LOUISVILLE.EDU/WOMENSCENTER

 [FACEBOOK.COM/UOFLWOMENCENTER](https://www.facebook.com/uoflwomencenter)

 [@UOFLWOMENCENTER](https://www.instagram.com/uoflwomencenter)

 SPOTIFY

 FLICKR

MESSAGE FROM THE DIRECTOR

Happy **P**ride Month!

As a person who decided to “come out” in my forties, Pride Month is a special time for me to enjoy celebratory spaces of belonging for LGBTQIA2S+ community in Kentucky. Yes, we are here! We are grateful for the lineage of activists who mobilized for fair policies at UofL and beyond to support a higher quality life for all – no matter who you love. And yes, we still have a lot of work to do but let’s take an “healthy pause” to celebrate our “wins.”

LEADERSHIP SUCCESSION

June is also my last month as the director of the Women’s Center. As I reflect on my term as the center’s leader, I believe that we also have major “wins” to celebrate after introducing major organizational changes to advance intersectional feminism and anti-racist frameworks in our work for student success. Here are some of those “wins”:

- We greatly increased the number of available scholarships to assist more award recipients for academic year of 2024-2025.
- We created community awards to recognize inclusive and impactful practices by Kentucky-based leaders and organizations invested in gender equity. We even honored our late beloved Breonna Taylor with the award!
- We held our inaugural Gender, Equity & Climate Justice virtual conference to highlight the correlations between the well-being of women and families and the stewardship of the Earth.
- We advanced our fundraising efforts and strategic community partnerships to meet our goals in student success with a feminist lens.
- We are in the last phase of developing our inaugural resource guide for student parents and military families for student success. Go team!

We did that – and so much more. I am so proud of our work together and the invaluable support of students, staff, faculty, donors, past directors, and community members. I would like a special shout out to Marian Vasser, the assistant vice president for inclusive excellence and belonging, Leondra Gully, the executive director, the team at the Office for Institutional Equity and the Women’s Center’s team, Jamioca Jones and Phyllis Webb. I am confident that the incredible work for student success for women, femmes and gender expansive folks will grow and advance beyond my time as director. Thank you so much!

I am excited to pursue my dreams as an interdisciplinary artist and an arts advocate. I will continue to ask the driving questions at the Women’s Center in my own creative work in the community: What is leadership? How do you recover from a mistake? How do you communicate core issues and facilitate difficult conversations with others? How do you take care of yourself while working with others? What are today’s best practices in collective work? I also plan to stay connected and involved in the Women’s Center where we have an exciting yearlong schedule of cultural programming events and student support services for you all. Come join us! So – this is not a goodbye. As I consider the next chapter for the Women’s Center and in my own life, I believe the late poet, Mary Oliver says it best in her poem, “I Worried.”

Finally, I saw that worrying had come to nothing.
And gave it up. And took my old body
and went out into the morning,
and sang.

In loving solidarity,

Dr. Jabani Bennett (She/They)

#reimaginingleadershipdevelopment



STUDENT VOICES

Dr. M. Celeste Nichols Award: Reflections from Recipients

Rachel A. Morgan is a 2023 Nichol Award recipient. She plans to graduate in May 2025 with a Master's in English.



Rachel A. Morgan presented at the 21st Biennial Conference of the Rhetoric Society of America (RSA), in Denver, CO, May 23-May 26, 2024 on the topic "Rhetorically Reading the Tik Tok FYP: Social Media Algorithms and Epistemic Injustice."

As a recipient of the Dr. Nichols Award, I was able to travel to the 2024 Rhetoric Society of America Conference in Denver, Colorado in late May. I presented my research presentation titled "Rhetorically Reading the TikTok FYP: Social Media Algorithms and Epistemic Injustice," which is a small piece of my dissertation project. My research studies algorithms and the ways that knowledge is disseminated and controlled on social media to consider how we might intervene to make these platforms more equitable for users. At the RSA conference this year, I was able to speak with scholars in the field about my research, attend different panels, and network with other professionals.

The Dr. Nichols Award allows women to continue to access academia, and these opportunities further professionalization, research projects, and more. I'm so grateful to have had this opportunity. Thank you to the Women's Center for continuing to prioritize diversity and support students on campus!

Erica S. Ranade, SSP, NCSP, BCBA, LBA, LPP. PhD Student in Curriculum and Instruction (Special Education) Erica plan to graduate from U of L in Spring 2026.



Erica S. Ranade presented at The Applied Behavior Analysis-International Conference in Philadelphia, PA, May 23-May 27, 2024 on the topic: "Behavior Analytic Bedside Manner and Psychological Therapeutic Techniques."

Boarding the plane to attend ABA-I, I reflected upon my journey as a Behavior Analyst, School Psychologist, and Psychological Practitioner. This conference marks the first time I am presenting in close to ten years. This conference is also the first I attended as a PhD student in Curriculum and Instruction at the University of Louisville after starting the program in Fall 2023. I decided to return to school after working in the field for ten years and seeing the difficulties that families experience first-hand while attempting to bridge gaps between medical, behavioral, psychological, and educational services. This gap is vast for families with young children who are English Language Learners, and I hope to address this gap in my work.

I met other practitioners and researchers dedicated to service equity and access for marginalized populations at the conference. I was grateful to attend a panel on privilege and power in behavior analysis. I also presented my work on the importance of the therapeutic alliance in behavior analytic work. My symposium was standing room only, signaling that behavior analytic practitioners are hungry for content to help them build connections with the populations they serve, particularly historically marginalized families.

I am grateful for the support from the Dr. Celeste Nichols Award and The Early Childhood Research Center. Their financial assistance allowed me to travel to Philadelphia, grow my network of like-minded professionals, and disseminate my work to a new audience. I look forward to continuing to build relationships with other professionals and broaden my scope as a doctoral student through continued study and experiences in the future.

APPLICATIONS AVAILABLE SOON!

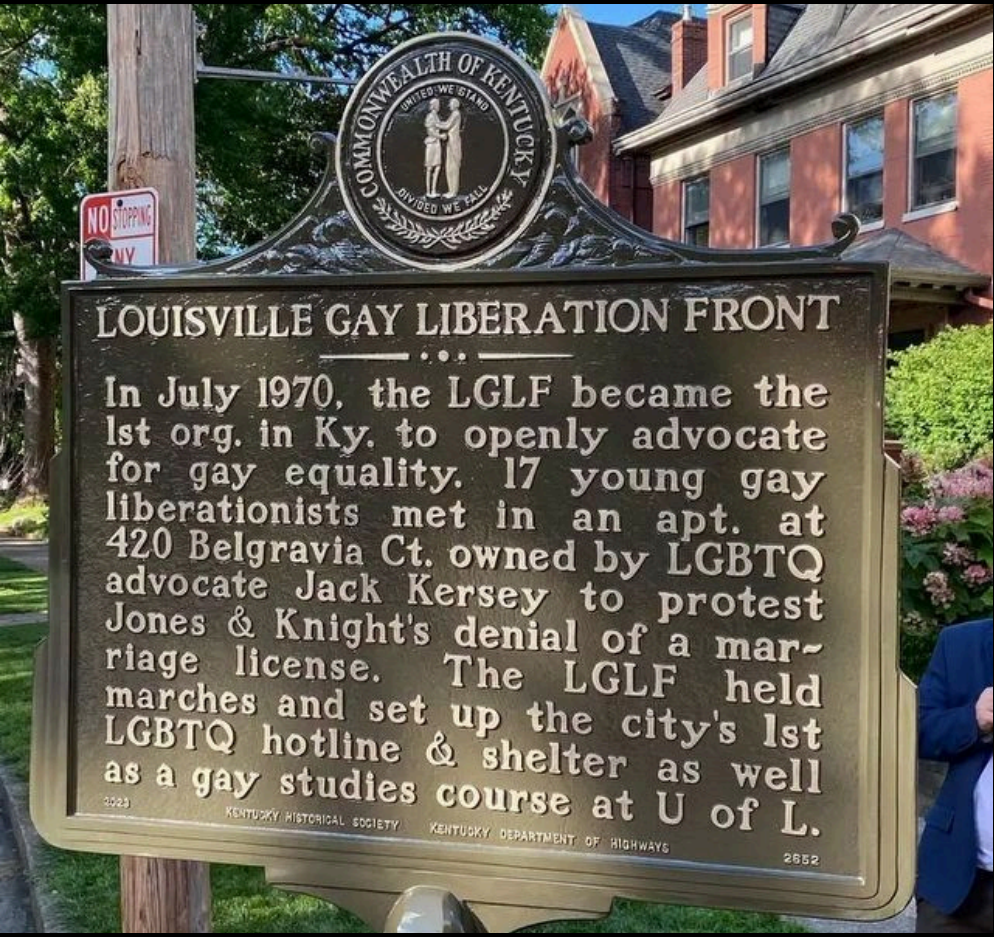


LGBTQ+ PRIDE MONTH JUNE 2024

Pride Month commemorates the Pride Month, which celebrates the Lesbian, Gay, Bisexual, Transgender and Queer (LGBTQ) community. It is observed each year in June to honor the **1969 Stonewall Uprising**, creating a shift in LGBTQ+ activism in the U.S.

Learn more:

- **GLAAD**
 - **Resources**
- ***We Are Everywhere*** by Matthew Riemer and Leighton Brown
- ***How to Live Free in a Dangerous World*** by Shayla Lawson
- ***Federico and All His Families*** by Mili Hernández
- **The Stonewall Reader**
by New York Public Library and Jason Baumann
- **Stonewall Uprising** documentary by PBS
- **GLSEN Pro-Noun Guide**
- **Pose**
- **Disclosure: Trans Lives on Screen**
- **Muxes**



THE FAIRNESS CAMPAIGN UNVEILED THE FIRST LGBTQ KENTUCKY HISTORICAL HIGHWAY MARKER. IT IS THE FIRST HISTORICAL MARKER OF ITS KIND IN LOUISVILLE.

In June 2024, the new Kentucky Historical Highway Marker was unveiled which was the headquarters of a group that formed to fight for civil rights fight for Louisville's LGBTQ community. [Learn more...](#)



Dr. Kaila Story, UofL Associate Professor, Women's, Gender and Sexuality Studies, with a joint appointment in the Department of Pan-African Studies & Jason Gardner, longtime Louisville Activist.

[Check out their podcast Strange Fruit](#)

Lisa Gunterman, UofL LGBT Center HSC Director and 2024 Kentuckiana Pride Parade grand marshal.



24

Municipalities across our commonwealth have enacted LGBTQ discrimination protections, covering nearly a third of Kentucky's population.

Louisville was the first city in 1999.

Kentucky communities with LGBTQ Fairness Ordinances include Louisville (1999), Lexington (1999), Covington (2003), Vicco (2013), Frankfort (2013), Morehead (2013), Danville (2014), Midway (2015), Paducah (2018), and Maysville (2018), Henderson (2019), Dayton (2019), Georgetown (2019), Versailles (2019), Bellevue (2019), Highland Heights (2019), Fort Thomas (2020), Woodford County (2020), Cold Spring (2020), and Newport (2020), Crescent Springs (2021), Augusta (2021), Fort Mitchell (2021), and Elsmere (2022).

UOFL AT KENTUCKAIAN PRIDE FESTIVAL

Volunteer at the University of Louisville / UofL Health booth and/or march in the parade with UofL marchers on June 15th.

[Learn more and sign up!](#)

UOFL & COMMUNITY SPOTLIGHT

LGBTQ+ Organizations & Initiatives

- [University of Louisville LGBT Center](#)
 - Belknap Campus
 - Health Sciences Campus
- [LGBTQ+ Faculty and Staff Association](#)
- [LGBTQ+ Affirming Healthcare Series](#)
- [PRIDE Alumni Council](#)
- [LGBTQ Studies \(Minor\)](#)
- [Cardinal Drag Haus](#)
- [SHADES](#)
- [SAGA](#)
- [Fellowship of Christian Queers](#)
- [Speed Spectrum](#)
- Free Space
- HSC Pride
- [Lambda Law Caucus](#)
- RNbow Pride - Nursing Students Organization
- [Sweet Evening Breeze](#)
- [Louisville Youth Group](#)
- [Kentucky Health Justice Network](#)
- [Trans Kentucky](#)



This exhibit highlights the local impact of the fairness ordinances, shares moving personal stories from the movement, and showcases the organizing strategies used. The exhibit provides insights into effective community organizing and celebrates progress towards equality.

"FAIRNESS DOES A CITY GOOD: A 25 YEAR RETROSPECTIVE" EXHIBIT

UOFL EKSTROM LIBRARY, LOWER LEVEL

Commemorating 25 years since the passing of LGBTQ+ inclusive, non-discrimination ordinances in Louisville and Lexington, this exhibit reintroduces stories from the movement that paved the way. Looking at community organizing as patchwork, this exhibit spotlights the wide range of tools and approaches that Fairness Campaign supporters, specifically in Louisville, have used to champion a more equitable future for Kentuckians.

[Learn more...](#)

Did You Know?

In the lower level of the University of Louisville Ekstrom Library archives holds the [Williams Nichols collection](#), one of the largest LGBTQ+ collections of photos and artifacts in the country.

JUNETEENTH

6/05

BFSA MEMBER GAME NIGHT: BOWLING

6-8pm, Executive Strike & Spare (See member email for details)

6/11

JUNETEENTH WELLNESS EVENT: YOGA

4-5pm, Cultural & Equity Center MPR

120 E. Brandeis Ave Louisville, KY 40208

Set aside time to slow down and connect with your mind and body as we recognize and celebrate Juneteenth/Freedom Day...Freedom Delayed, but not denied. Grab your yoga mat and join us!! Note: We will have a limited number of yoga mats available.

6/17

JUNETEENTH LECTURE SERIES: WHERE ARE WE GOING (OUR PRESENT)

12-1:30pm, Ekstrom Library Chao Auditorium

2215 S. 3rd Street Louisville, KY 40208

Join us as we dice into People Power! "People Power refers to the collective strength and influence that individuals or communities wield when they come together to effect change, advocate for causes, or address issues of importance. It signified the ability of ordinary people to mobilize, organize, and work collaboratively towards common goals, often challenging existing structure, policies, or systems. In essence, "People Power" embodies the concept that through unity, activism, and solidarity, communities can drive positive societal transformation and engage in meaningful actions that shape their present future. Presenter: Jecory Authur, UofL Alumni, Metro District 4 Councilman, ADOS Advocate

6/18

JUNETEENTH LECTURE SERIES: WHERE ARE WE GOING (OUR FUTURE)

12-1:30pm, Ekstrom Library Chao Auditorium

2215 S. 3rd Street Louisville, KY 40208

Join us we we help the most overlooked among us embrace their superpowers and achieve psychological and financial freedom.

Presenter: John Mays, The I Believe I Can Man

6/20

JUNETEENTH LECTURE SERIES: WHERE ARE WE GOING (OUR PAST)

12-1:30pm, Ekstrom Library Chao Auditorium

2215 S. 3rd Street Louisville, KY 40208

Join us and the Coalition on the History of the Enslaved as we take a journey...where we were??? The Coalition on the History of Enslavement is a partnership between four Louisville historic houses and former sites of enslavement: Farmington, Historic Locust Grove, Oxmoor Farm Foundation, and The Riverside, The Farnsley-Moreman Landing.

Presenters: Dr. John Chenault, Associate Professor & Director of Anti-Racism Initiatives, UMA, School of Medicine; Shirley Harmon, Curator-Oxmoor Farm.

6/23

JUNETEENTH RECOGNITION: A DAY OF WORSHIP

10am-12pm, Christ Temple Christian Life Center
723 S. 45th St. Louisville, KY 40211

You are invited!! Let all people of all religions come together and acknowledge a period in our history that shaped and continues to influence American society in an effort that will allow other ethnic groups to be sensitized to the conditions our ancestors endured and help all understand the pain and plight of descendants.

6/25

JUNETEENTH HSC COOKOUT: RED & BLACK ON THE GREEN

11am-1pm, HSC Courtyard (in front of Kornhauser Health Sciences Library)

540 S. Preston St. Louisville Ky, 40202

Come out and enjoy a Juneteenth celebratory lunch as we recognize and celebrate Juneteenth! We will have a voter registration table and vendors on hand to educate our faculty, staff & students and to promote and bring awareness to the many outstanding products and services offered by our community's Black business owners and allies.

6/26

JUNETEENTH HSC COOKOUT: RED & BLACK ON THE GREEN

11am-1pm, University Club

200 E. Brandeis Ave. Louisville, KY 40208

Come out and enjoy a Juneteenth celebratory lunch as we recognize and celebrate Juneteenth! We will have a voter registration table and vendors on hand to educate our faculty, staff & students and to promote and bring awareness to the many outstanding products and services offered by our community's Black business owners and allies.

SPONSORED BY:

Black Faculty and Staff Association, Office of Institutional Equity, Commission on Diversity & Racial Equality, Office of Community Engagement, Pepsi, University Advancement, Athletics, College of Business, Delphi Center, Department of Medicine, Department of Surgery, HSC Office of Diversity & Equity, J.B. Speed School of Engineering, School of Dentistry, School of Medicine, School of Public Health, Student Affairs, Christina Lee Brown Environme Institute, Graduate School, Women's Network



Juneteenth marks the day in 1865 when all slaves in the Confederacy were officially emancipated. The holiday is also called "Juneteenth Independence Day," "Freedom Day" or "Emancipation Day." [Learn more...](#)

Learn more about UofL's Juneteenth Events





GRANDMOTHER POWER!

ORAL HISTORY PROJECT

LEARN MORE

What thoughts, dreams or choices did my grandmother make – when she was my age? How has the world changed in her lifetime? What can I learn from her?

Grandmother Power! oral history project will feature multicultural stories between grandmothers and their grandchildren in Kentucky. The conversations will amplify the power of intergenerational connections, cultural knowledge, and reflection about gender equity issues across time with project participants. The Women's Center's project will be a collaboration with the UofL Ekstrom Library's [Oral History Center](#) & [UofL Digital Media Suite](#).

Interested in participating in the GrandmotherPower! (GP) oral history project?

- Connect to the power of storytelling for gender equity.
- Honor the wisdom, beauty, and positive transformations in aging.
- Have fun with your loved ones.

[WATCH KICK-OFF RECORDING](#)

[PARTICIPANT SIGN-UP](#)

**"WE ARE BRAVER AND WISER BECAUSE THEY EXISTED, THOSE STRONG WOMEN AND STRONG MEN... WE ARE WHO WE ARE BECAUSE THEY WERE WHO THEY WERE. IT'S WISE TO KNOW WHERE YOU COME FROM, WHO CALLED YOUR NAME."
– MAYA ANGELOU**

GRANDMOTHER POWER!

ORAL HISTORY PROJECT PHOTO CAMPAIGN

We want to honor and acknowledge your grandmothers! Photos will be featured on social media and in our monthly Newsletter. [Make a submission](#)



SUBMIT AN EVENT TO OUR
NEWSLETTER

CULTURAL & EQUITY CENTERS

CULTURAL CENTER

LGBT CENTER

MUHUMMAD ALI INSTITUTE FOR
PEACE & JUSTICE

INCLUSIVE EXCELLENCE AND BELONGING
OPPORTUNITIES AT THE UNIVERSITY OF
LOUISVILLE

WOMEN'S CENTER

SAVE THE DATE!

BLOCK PARTY

AUG 21

GET INVOLVED

**JOIN THE
STUDENT-PARENT
ASSOCIATION**

**Vacant
Executive
Board
Positions:**

Secretary
Financial Officer
Circle Coordinator

If interested contact:

phyllis.webb@louisville.edu
cishella.durling@louisville.edu



**Interested in
leadership
opportunities?**



Contact us!
jameca.jones@louisville.edu

**American Association
of University Women**

[GET CONNECTED](#)

**Student-Parent
Association**

[GET CONNECTED](#)

**United Nations
Association - Women**

[GET CONNECTED](#)

**Women 4 Women
Student Board**

[GET CONNECTED](#)

**Student Women
Veteran Support Group**

CONTACT:
PHYLLIS.WEBB@LOUISVILLE.EDU

**Feminist Social Justice
Leadership LLC**

CONTACT:
JAMIECA.JONES@LOUISVILLE.EDU

**Women's Center Programming
Committees**

- 2024-2025 Programming
- Women's Center Marketing Team

**EMAIL:
WOMENCTR@LOUISVILLE.EDU**

Women 4 Women Student Board attending
Louisville Pride (2017)



Li Maizi, Chinese activist for gender equality and LGBTQ rights
with United Nations Association - Women members Janet Dake
& Sammi Mathew (2019)



THROWBACK

Take a Survey to Help Us Better Understand Decisions About Mode of Birth After a Cesarean

- Have you had a cesarean delivery?
- Have you had another baby since your cesarean?
- Did you live in Kentucky when the baby after your cesarean delivery was born or deliver in Kentucky?

If the answer to all of these questions is yes, then we want to hear from you!



Take this 15 min survey!

USE THE QR CODE TO TAKE THE SURVEY



If you have questions, contact Melissa Eggen at melissa.eggen@louisville.edu

This study was approved by the University of Louisville IRB. IRB # 23.0538

This study is supported, in part, by the Kentucky Cabinet for Health and Family Services, Department for Medicaid Services under agreement titled "Improving Maternal and Infant Health"

DID YOU KNOW?

The Women's Center has an American Association of University Women (AAUW) institution membership for UofL.

- **FREE** AAUW annual membership for **ALL** UofL students (\$18.81 otherwise)
- Access to their **Women's Economic Empowerment Webinars** exclusively for students, faculty and staff
- Students can apply for **\$6 million in fellowships and grants** annually.
- **BONUS: Join the only AAUW student chapter in KY here at UofL!**



NOMINATE A STUDENT, FACULTY, STAFF AND/OR COMMUNITY MEMBER/ORGANIZATION!



DAWN WILSON

Commissioner, Juneteenth Commission . Chair Education committee, Louisville Metro Human Relations Commission

COMMUNITY PEARL OF KY SPOTLIGHT

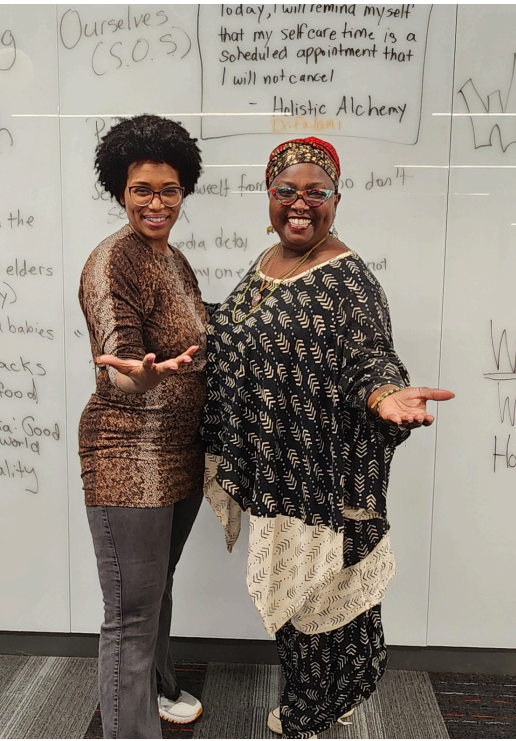
An inclusive leader in the field of sports and civil rights committed to gender equity and social justice for all.



Learn more about our Community Pearls!



“Intentional adaptation is the heart of emergent strategy. How we live and grow and stay purposeful in the face of constant change actually does determine both the quality of our lives, and the impact that we can have when we move into action together.”
 -adrienne maree brown



UNIVERSITY OF LOUISVILLE® Women's Network

At the University of Louisville, we're dedicated to fostering an environment where every woman can thrive personally and professionally. That's why we're proud to welcome you to the Women's Network ERG - an inclusive organization committed to empowering women faculty and staff to reach their fullest potential.

Our mission is clear: to encourage and promote the personal and professional development of women at UofL. Through collaborative efforts with university partners, we provide a platform for women to access valuable resources, information, and networking opportunities. We are here to help find friends across campus!

Our goals are ambitious: fostering relationships, building richer connections, and providing insight on career advancement opportunities. Together, we strive to create an environment where every woman can excel and grow.

Join our Group on Microsoft Teams where we highlight exciting events around Louisville and on campus!

JOIN

Upcoming Events:

Women's Network Social Hike & Networking After Hours
Details to be announced soon via Teams!

Annual Creepy Campus Tour
October 30th, 2024
5:30-8pm



RESOURCES



[Commission on the Status of Women](#)

[Commission on Diversity & Racial Identity](#)

[Women's Alumni Council](#)

[Employee Success Center](#)

[Faculty Handbook](#)



No one has to do everything... everyone has to do something. What's your Green Dot?

Green Dot is a comprehensive violence prevention strategy with a focus on preventing Power Based Personal Violence; sexual violence, dating violence and stalking. The strategy incorporates a public health approach to violence prevention, by working across the socio-ecological model.

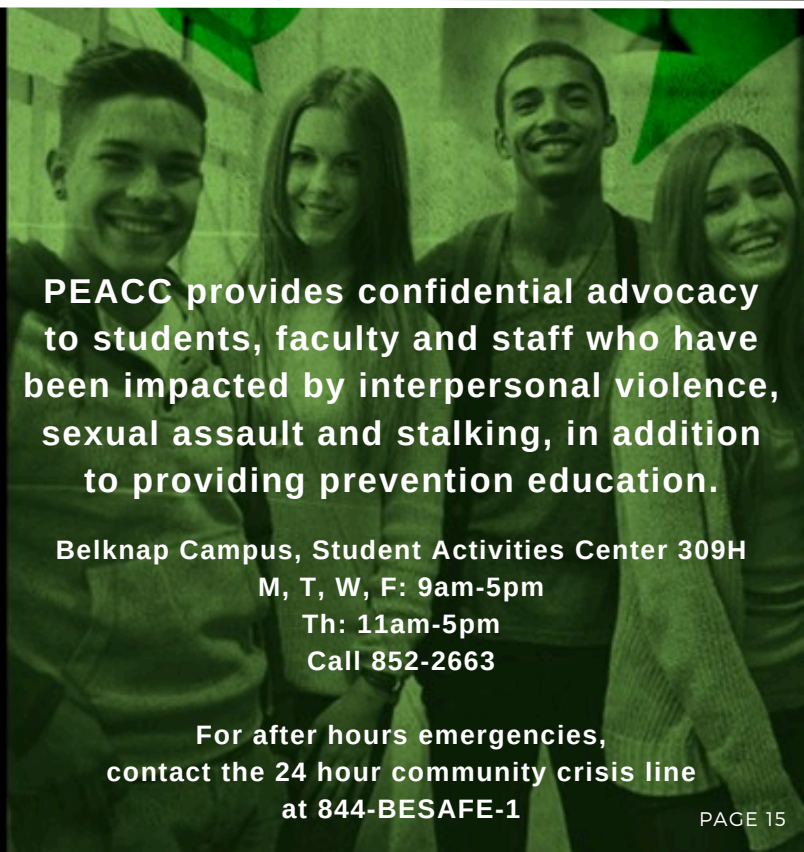
Green dots are the small actions we take everyday that will shift our culture to one where Power Based Personal Violence is not accepted.

[Learn more about Green Dot](#)

WE'RE ALL
in this
TOGETHER

The
PEACC
CENTER

Prevention, Education and Advocacy
on Campus and the Community



PEACC provides confidential advocacy to students, faculty and staff who have been impacted by interpersonal violence, sexual assault and stalking, in addition to providing prevention education.

Belknap Campus, Student Activities Center 309H
M, T, W, F: 9am-5pm
Th: 11am-5pm
Call 852-2663

For after hours emergencies, contact the 24 hour community crisis line at 844-BESAFE-1

CONTACT US!

We are here to support you!

GET A WOMEN'S CENTER COACH!

Women's Center Staff offers 1-on-1 Coaching for all students.

- Student Leadership
- Academic
- Financial
- Campus Involvement
- Personal Matters
- Get connected to campus & community resources
- Student-Parent support

Meet with
 Jamieca Jones, MSSW, M.A.
 (She/Her)
 Program Coordinator

Meet with
 Phyllis M. Webb, M.Ed
 (She/Her)
 Program Coordinator



Schedule an appointment or stop by during our drop-in hours!

[LEARN MORE](#)



OUR

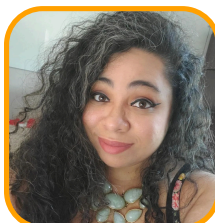
TEAM



Jabani Bennett, EdD, MAT
 Director
 (She/They)
 Email: jabani.bennett@louisville.edu



Phyllis Webb, M.A.Ed
 Program Coordinator & Women's Center Coach
 (She/Her)
 Email: pmwebb01@louisville.edu
 Contact me if you're a student-parent!



Jamieca Jones, MSSW, M.A.
 Program Coordinator & Women's Center Coach
 (She/Her)
 Email: jajone19@louisville.edu
 Contact me if you're interested in leadership!

CULTURAL & EQUITY CENTER
 120. E. BRANDEIS AVE.
 HOURS:
 MONDAY - FRIDAY 9AM-5PM