

UL OF WOMEN'S CENTER NEWSLETTER

**SPRING 2024:
FEBRUARY 14TH, 2024**

**A PLACE WHERE ALL ARE WELCOMED TO ENGAGE IN ACHIEVING
GENDER-EQUITY & SOCIAL JUSTICE.**

ADVOCACY

EDUCATION

EMPOWERMENT

ACTION

Stay up to date on upcoming events and opportunities during the school year, but as always, for the most up-to-date information, visit our website and follow us on Instagram.

SNAPSHOT: REIMAGINING HEALTH & COMMUNITY WELLNESS



**MESSAGE FROM THE
DIRECTOR**

PAGE 2



**MORE WOMEN'S CENTER
SCHOLARSHIPS!**

DEADLINE: MARCH 1ST

PAGE 3



**18TH ANNUAL KENTUCKY
WOMEN'S BOOK FESTIVAL**

PAGE 3



ADVOCACY IN ACTION

PAGE 8

A publication of the University of Louisville Women's Center.

**UL OF WOMEN'S
CENTER**

**OUR FUTURE IS INTERSECTIONAL:
RE-IMAGINING LEADERSHIP DEVELOPMENT**

UNIVERSITY OF LOUISVILLE WOMEN'S CENTER
120 E. BRANDEIS (BELKNAP)
UNIVERSITY OF LOUISVILLE
LOUISVILLE, KENTUCKY 40292

PHONE (502) 852-8976

WOMENCTR@LOUISVILLE.EDU
LOUISVILLE.EDU/WOMENSCENTER

FACEBOOK.COM/UOFLWOMENCENTER

@UOFLWOMENCENTER

SPOTIFY

FLICKR



WELCOME FROM THE DIRECTOR

Happy Black History Month,

Time moves so fast! February of 2024 is here – with jampacked community events, on and off campus. I hope this message finds you well, and possibly ready to explore "glocal" happenings that celebrate the rich heritage of the African diaspora. No matter where I am in the world during this month, I love how easily I can find innovative programming events aimed at uplifting the critical contributions and radical joy from Black folks.

Why do we celebrate Black History Month at the University of Louisville Women's Center – a space of belonging for people invested in gender equity? What are the connections to Black history, and our intersectional feminist work with students? Here are some questions and thoughts that I reflect upon during this time of year – as a person passionate about justice for women, femmes and gender expansive folks:

1. LEADERSHIP DEVELOPMENT MODELS

During Black History Month, observers can learn about diverse leaders in the African diaspora who have co-led multiracial social movements across time and space and sometimes, against all odds. The individual stories connect to a web of important lessons about leadership development, collective work and emergent strategies for freedom for all. And yes – female-identifying leaders and followers played a significant role for systemic change in every sector of our society. If I do not see a woman figure in a historical recount, I wonder...is there more to discover? Did we miss someone or something? Who is in the center of these stories told over and over? What else can we learn?

2. RESILIENCE & INNOVATION

Ideas about leadership compel me to consider innovation and resiliency by leaders of the African diaspora. Despite long standing barriers, Black folks had to be resilient to create innovation in many areas including the arts, science, technology and so much more. How do you and I become adaptive and innovative when we encounter challenging life experiences or trauma? Is it possible to reach goals such as co-creating healthy neighborhoods, higher quality of life, family wellness and community building while experiencing adversities? What tools or approaches do I need to survive and thrive in my work, and possibly innovate with others? What else can I learn from Black history that will help me navigate my daily life? And please – let's ask our elders how did they steer through so much! I am in deep gratitude for these exemplar models and stories that can foster new concepts, products, and for services for equity.

3. RADICAL REST

Last but not least, Black History Month teaches all of us to consider radical rest after centuries of struggle. For some of us, we come from families and communities who did not have the privilege to "rest our bones" to nap, play, dream or to be freely creative. Did your family ever experience seasons of rest or a "sabbatical" from the busyness of life or social justice work? Radical rest can be an act of resistance and a gift to yourself.

As the first Black and openly queer director of the Women's Center in the past thirty years, I find Black History Month as a great opportunity to "pause", and consider the transformative lessons about social change from the lived experiences of Black folks. There have been many "wins" in the face of horrific intergenerational trauma. I am in gratitude to the ancestors and the living for contributing to these triumphs for justice. My late stepfather, Dr. J. Blaine Hudson, a civil rights activist, educator and the former dean of arts and sciences at UofL, supported many gender equity initiatives during his tenure. He shares this message with us -

"We must become change-agents, both in our personal lives (by setting good examples for others) and in concert with others."

I agree and I am joyful about the Black trailblazers right here in Kentucky. We invite you to join us for the Women's Center's programming events during Black History Month to REST, reflect and celebrate together this month and the rest of the year for Black history!

In solidarity,

Dr. Jabani Bennett (She/They)



UPCOMING

FEBRUARY 2024

BLACK HISTORY MONTH FEBRUARY RELATIONSHIPS UNPLUGGED FEBRUARY 6TH

5-7:30pm, Red Barn

#WOMENCENTERWEDNESDAY TABLING FEBRUARY 7TH

11am-1pm, Student Activities Center Marketplace Table

STUDENT-PARENT ASSOCIATION VALENTINE'S SOCIAL FEBRUARY 13TH

4-5:30pm, Cultural & Equity Center MPR

Join us for a fun-filled event with food, games and laughter. Bring your families and enjoy the festivities.

STUDENT VETERANS ROUNDTABLE: FEMME POWER FEBRUARY 20TH

11:30am-2pm, Cultural & Equity Center MPR

Roundtable discussion | Vendors | Photo Exhibit (February 19-23)

JUSTICE IN ACTION FEBRUARY 20TH

4:30-7pm, Cultural & Equity Center MPR

Learn about current issues in the KY General Assembly in an interactive workshop. Food provided!

JOIN A COMMITTEE OR VOLUNTEER

18th Annual

Kentucky Women's Book Festival

SATURDAY, MARCH 2ND, 2024

9AM-2PM

UNIVERSITY OF LOUISVILLE
EKSTROM LIBRARY

FEATURING:



- Minda Honey
- Deedee Cummings
- Brittany J. Thurman
- Rheonna Thornton
- Pamela Haines
- Jackie Floyd
- Dr. Tytianna Ringstaff

[*Learn about all of the speakers!*](#)

Opening Speaker:
Joy Priest

To register and for more information:
louisville.edu/womenscenter/signature-programs/kwbf





SEE WEBSITE AND/OR ENGAGE UOFL FOR
APPLICATION AND FULL LIST OF REQUIREMENTS.

DR. ANN T. ALLEN SCHOLARSHIP

THE DR. ANN T. ALLEN SCHOLARSHIP IS FOR CURRENT UNIVERSITY OF LOUISVILLE UNDERGRADUATE STUDENTS AND THE ANNUAL AMOUNT TO BE AWARDED IS APPROXIMATELY \$1,000 TO STUDENTS WHO MEET THE FOLLOWING CRITERIA. (\$500 PER SEMESTER)

**WOMEN'S CLUB OF THE UNIVERSITY OF
LOUISVILLE SCHOLARSHIP**

THIS WOMEN'S CLUB OF THE UNIVERSITY OF LOUISVILLE SCHOLARSHIP FOR THE FALL 2024 IS IN THE AMOUNT OF \$24,000 AND IS FOR UNDERGRADUATE STUDENTS. THE AMOUNT WILL BE DISTRIBUTED EQUALLY BETWEEN FOUR (4) RECIPIENTS AND AWARDED \$3,000 PER SEMESTER, PER STUDENT.

**WOMEN'S CLUB OF THE UNIVERSITY OF
LOUISVILLE LELIA SUBLETT
SCHOLARSHIP**

FIVE (5) STUDENTS WILL BE AWARDED \$750.00 EACH. THE ORIGINAL FUND WAS ESTABLISHED IN HONOR OF LONG-TIME CLUB MEMBER LELIA SUBLETT AND HER COMMITMENT TO SUPPORTING THE CLUB'S MISSION BY HOSTING HER CREATIVE COOKING EVENTS. THE GIFT WILL BE USED TO PROVIDE A ONE-TIME UNDERGRADUATE SCHOLARSHIP.

**WOMEN'S CLUB OF THE UNIVERSITY OF
LOUISVILLE MINORITY SINGLE PARENT
SCHOLARSHIP**

TWO (2) STUDENTS AT \$5,500 EACH. THIS FUND WILL BE USED TO ESTABLISH UNDERGRADUATE SCHOLARSHIPS COVERING STUDENT FEES FOR IN STATE TUITION, FEES AND BOOKS. IN RECOGNITION OF THE NEED TO SUPPORT THOSE IN FINANCIAL NEED WITHIN UNDERREPRESENTED COMMUNITIES, IT IS THE DONOR'S STRONG PREFERENCE TO SUPPORT SINGLE PARENTS WITHIN MINORITY POPULATIONS GIVING FIRST CONSIDERATION TO SINGLE MOTHERS OF AFRICAN AMERICAN DESCENT.

ELAINE CISSY MUSSELMAN SCHOLARSHIP

THE ELAINE CISSY MUSSELMAN SCHOLARSHIP FOR THE FALL 2024 IS A ONE-TIME AWARD OF \$500.00. FUNDING WILL BE AWARDED TO UP TO SIX (6) STUDENTS. STUDENTS WHO ARE FULL-TIME UNDERGRADUATE WOMEN, GENDER & SEXUALITY STUDIES MAJORS ARE PREFERRED.

**WOMEN'S CENTER STUDENT SUPPORT
FUND**

THE WOMEN'S CENTER STUDENT SUPPORT FUND WAS CREATED TO ASSIST UOFL STUDENTS WHO ENCOUNTER A SHORT-TERM EMERGENCY OR HAVE A NEED RELATED TO EDUCATIONAL EXPENSES INCLUDING BUT NOT LIMITED TO TUITION, FEES, RESEARCH, AND BOOKS.

THE NUMBER OF STUDENTS WHO CAN BE SERVED BY THE WOMEN'S CENTER STUDENT SUPPORT FUND IS SUBJECT TO THE AVAILABILITY OF FUNDS.

GET INVOLVED



American Association of University Women

FIND US ON SOCIAL MEDIA!
[FACEBOOK](#) | [INSTAGRAM](#)

Upcoming General Body Meetings
Feb 15 5:30-6:30pm
Feb 29 5:30-6:30pm

[GET CONNECTED](#)



Student-Parent Association

FIND US ON SOCIAL MEDIA!
[FACEBOOK](#) | [INSTAGRAM](#)

Upcoming Programs
Valentine's Social
February 13th

[GET CONNECTED](#)



UNA USA
UNA Women
University of Louisville Chapter

United Nations Association – Women

FIND US ON SOCIAL MEDIA!
[FACEBOOK](#) | [INSTAGRAM](#)

Upcoming General Body Meetings
Feb 13 5:30-6:30pm HUM 101
Feb 29 30 5:30-6:30pm HUM 101

[GET CONNECTED](#)



Women 4 Women Student Board

FIND US ON SOCIAL MEDIA!
[FACEBOOK](#) | [INSTAGRAM](#)

Email jamiECA.jones@louisville.edu if interested in leadership position.

[GET CONNECTED](#)

Student Women Veteran Support Group

Upcoming Programs
Femme Power: Student-Veterans Roundtable
February 20th 11:30am-2pm

CONTACT:
PHYLLIS.WEBB@LOUISVILLE.EDU

Feminist Social Justice Leadership LLC

CONTACT:
JAMIECA.JONES@LOUISVILLE.EDU

Be a leader!

LEADERSHIP POSITIONS AVAILABLE

American Association of University Women at UofL

- Secretary
- Programming Chairs (Not an elected position)

Women 4 Women Student Board

- Executive Board Positions
- Programming Chairs (Not an elected position)

United Nations Association-Women

- Event Coordinator Chair (Not an elected position)
- Event Coordinator Committee Member

Women's Center Programming Committees

- Human Trafficking & Climate Injustice Conference
- Kentucky Women's Book Festival
- Women's Center Empowerment Luncheon

EMAIL:
WOMENCTR@LOUISVILLE.EDU



Student Group Shout-Out

CARDS FOR REPRODUCTIVE FREEDOM

CONNECT WITH US!
[ENGAGE](#) | [INSTAGRAM: @CARDS4REPROFREEDOM](#)

Upcoming Events

- 2/15: Community of Love Celebration
- 2/29: "Belly of the Beast" Film Screening w/ Attica Scott
- 4/13: Black Maternal Health Week Block Party: In collaboration with SisterSong, C4RF will be throwing a Block Party to celebrate Black Maternal Health Week. To volunteer with the planning of this event, please fill out this [form](#).

Cards for Reproductive Freedom (C4RF) is a student group dedicated to mobilizing advocates for reproductive justice; in addition to raising public awareness about reproductive health and rights, educating young people about sexual health, advocating for menstrual equity, and creating lasting change in those communities.

[NOMINATE A GROUP](#)



INCLUSIVE EXCELLENCE AND BELONGING OPPORTUNITIES AT THE UNIVERSITY OF LOUISVILLE

[LEARN MORE](#)

Get engaged with the Cultural & Equity Center offices & their programs!

- @uoflculturalcenter
- @lgbtcenteruofl
- @uofllatinx
- @uofl_mai

COUNSELING CENTER AFTER-HOURS CRISIS LINE

Counseling Center phone is now answered 24/7; the after-hours crisis line is the same number (502-852-6585) and is available evenings, holidays and weekends to all enrolled students, faculty and staff; faculty and staff can utilize the line for consultation.

Now open

After-hours
crisis line

#BEWELLUOFL

@UOFLCOUNSELINGCENTER



BLACK HISTORY MONTH

The “Art of Resistance” The artists who used their crafts to uplift the race, speak truth to power and inspire a nation. (2024 BHM Theme)



UNIVERSITY OF LOUISVILLE
BLACK FACULTY/STAFF
ASSOCIATION

GET CONNECTED

CULTURAL & EQUITY CENTERS

Visit their Engage Page and Social Media to stay up to date!

CULTURAL CENTER

LGBT CENTER

MUHUMMAD ALI INSTITUTE FOR PEACE & JUSTICE

WHM 2024

"Women & Femmes Who Advocate for Equity, Diversity and Inclusion."

WOMEN'S HISTORY MONTH CALENDAR SUBMISSIONS

Visit our website or use the QR code.



COMMUNITY



Becoming bell hooks

BECOMING BELL HOOKS SCREENINGS

This documentary “explores the life and legacy of Kentucky-born author bell hooks, who wrote nearly 40 books and whose work at the intersection of race, class and gender serves as a lasting contribution to the feminist movement.

LEARN MORE

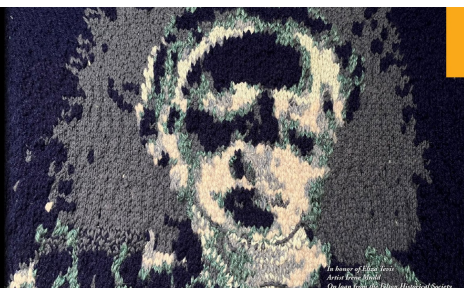
- The documentary will air on KET at 9/8 p.m. Feb. 27 and Feb. 29.
- Free preview screenings will be held at:
 - 6:30 p.m. Feb. 20 at the Lyric Theatre & Cultural Center in Lexington.
 - 7 p.m. Feb. 22 at the Speed Art Museum in Louisville.

LET'S TALK | BRIDGING THE DIVIDE

ELIZA TEVIS: SHE DID WHAT SHE COULD

FEBRUARY 18th 2-3 PM
FRAZIER HISTORY MUSEUM
829 W. MAIN STREET

frazier
KENTUCKY HISTORICAL SOCIETY
Lexington Historical League
FREE WITH COST OF MUSEUM ADMISSION



BRIDGING THE DIVIDE: ELIZA TEVIS: SHE DID WHAT SHE COULD

LEARN MORE

A new mini-exhibit at the Frazier History Museum in her honor at the Frazier. *Eliza Tevis: She Did What She Could*. Eliza Tevis was an enslaved woman who gained her freedom in the 1830s, purchased land, and built a home in the “Wet Woods,” now the Newburg neighborhood of south Louisville.

AN ODE TO BLACK WOMEN IN THE ARTS

An Ode to Black Women Artists will be presented on Saturday, Feb. 24 at 5 p.m. at Bomhard Theater – Kentucky Center. An Ode to Black Women Artists is an event that celebrates and pays homage to Black women performing artists who have helped shaped Black culture and art and will be hosted by spoken word artist Robin G.



CHECK IT OUT!

LOOKING BACK



Feminist Space



Feminist Space



Feminist Space



Feminist Space



Relationships Unplugged



Relationships Unplugged

COMMUNITY PEARL OF KY SPOTLIGHT

An inclusive leader in the field of arts education and culture. She is committed to empowering girls through dance and performance.



**HARLINA TRUMBO
(SHE/HER)**

*Dance Educator Lincoln Performing Arts School
and Artistic Director LaNita Rocknettes School of
Dance*



Learn more about our Community Pearls!

STUDENT SPOTLIGHT

*Women's, Gender, and Sexuality Studies Major; Philosophy
Minor*

Carlie is a senior who has a deep passion for social justice for all. Outside of classes, Carlie is President of Cards for Reproductive Freedom, Secretary of Disabled Cards United, and Services Chair for the Honors Student Council. In her various roles, Carlie advocates for social justice by working to bridge the gap between the campus community and our local Louisville community. After graduation, Carlie plans to attend the University of Chicago Law School to become a child's rights attorney.

"Working with the Women's Center has given me access to various networking opportunities that I wouldn't have access to otherwise as a first-generation college student."



CARLIE REEVES

*She/Her/Hers
Cards for Reproductive
Freedom, President
Junior*

NOMINATE A STUDENT, FACULTY, STAFF AND/OR COMMUNITY MEMBER/ORGANIZATION!

COMMUNITY SPOTLIGHT



**Roots 101 African American
History Museum**

Founded by Lamont Collins in 2020, the Roots 101 African-American Museum is a place where visitors can see themselves in history, explore the African-American story in its entirety, and gain a greater understanding of the achievements, cultural contributions, and experiences of our community.



<https://www.roots-101.org/>

ADVOCACY IN ACTION

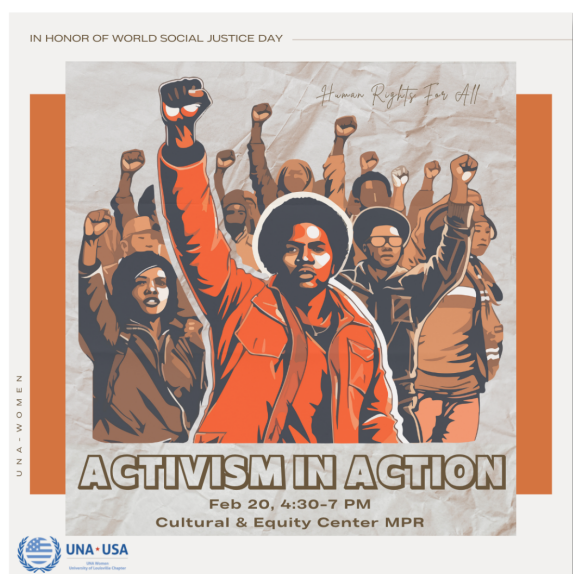


THE FIGHT CONTINUES...



Campbell Clark (She/Her) Class of 2027
United Nations Association - Women Advocacy Chair

The Kentucky General Assembly is still in session. Here are some important bills that were submitted:



HB 9 and **SB 6** will restrict DEI in public universities in KY, putting many RSOs at risk. If you have any thoughts or concerns, please email me at cjclar22@louisville.edu as I am working on compiling student responses to send to the legislature.

Want to learn how to be politically active and don't know where to start? Come to **Advocacy in Action** on **Feb 20th 4:30-7pm** in the **Cultural & Equity Center**. This will be in honor of World Social Justice Day.

Get Organized! Here is how you can be an advocate off campus. Below are some Kentucky based organizations with locations and meetings in Louisville that would love to have you get engaged.

- [Kentuckians for the Commonwealth](#)
- [Kentucky Youth Advocates](#)
- [KY Black](#)
- [ALCU](#)
- [League of Women Voters](#)

It is important to reach out to your senators and representatives let them know what the public wants. You can find out who represents you and how to contact them [here](#).



The United Nations Association - Women is a student organization advised under the Women's Center.



FAFSA

CHANGES FOR 2024-2025

FAFSA is open so don't forget to complete yours! There have been some changes so check out the Financial Aid's website for more information and how to complete it.

[LEARN MORE](#)

BLACK HISTORY MONTH

WOMEN & FEMMES

Anna Julia Cooper



[LEARN MORE](#)

An author, educator, sociologist, speaker, Black liberation activist, and one of the most prominent African-American scholars in United States history. In her 1892 book titled, "A Voice from the South by a Black Woman of the South" she asserted that educated Black women played a pivotal role in uplifting the entire race. The book marked a significant milestone, as it stands as "one of the most forceful and enduring statements of Black feminist thought to come out of the nineteenth century."

"It is not the intelligent woman v. the ignorant woman; nor the white woman v. the black, the brown, and the red, it is not even the cause of woman v. man. Nay, tis woman's strongest vindication for speaking that the world needs to hear her voice."

RESOURCES



**Menstrual
Freedom
Coalition**

Menstrual Freedom
Coalition

[FIND OUT MORE](#)

Family-Friendly/Student-
Parents

[FIND OUT MORE](#)

Women's Center
Scholarships & Awards

[FIND OUT MORE](#)

Louisville Metro Office for Women
Organizations Serving Women & Girls

[FIND OUT MORE](#)

We are here to support you!

GET A WOMEN'S CENTER COACH!

Meet with
Jameica Jones, MSSW, M.A.
(She/Her)

Program Coordinator

Meet with
Phyllis M. Webb, M.Ed
(She/Her)

Program Coordinator



Women's Center Staff offers 1-on-1 Coaching for all students.

- *Student Leadership*
- *Academic*
- *Financial*
- *Campus Involvement*
- *Personal Matters*
- *Get connected to campus & community resources*
- *Student-Parent support*

Schedule an appointment or
stop by during our drop-in
hours!

[LEARN MORE](#)



CONTACT US!



Jabani Bennett, EdD, MAT
Director
(She/They)
Email: jabani.bennett@louisville.edu



Phyllis Webb, M.A.Ed
Program Coordinator & Women's
Center Coach
(She/Her)
Email: pmwebb01@louisville.edu
Contact me if you're a student-parent!



Jamieca Jones, MSSW, M.A.
Program Coordinator & Women's Center
Coach
(She/Her)
Email: jajone19@louisville.edu
Contact me if you're interested in leadership!

CULTURAL & EQUITY CENTER
120. E. BRANDEIS AVE.
HOURS:
MONDAY - FRIDAY 9AM-5PM