

UNIVERSITY OF  
**LO** I<sup>®</sup>

SCHOOL OF PUBLIC HEALTH  
& INFORMATION SCIENCES

## LET YOUR ENERGY BE YOUR INTRODUCTION.

Start where world-class research, hands-on learning and entrepreneurial breakthroughs are born. Where inclusivity and accessibility are catalysts for global impact. Where the city and campus are linked for endless opportunity. Start at UofL, where you have the potential to build a better world, here & beyond.

University of Louisville  
School of Public Health  
and Information Sciences  
Louisville, KY 40292  
502-852-3299

[louisville.edu/sphis](https://louisville.edu/sphis)





# HISTORY OF PUBLIC HEALTH AT UOFL

- 1919–1923** • UofL operated a school of public health to serve needs in Kentucky and beyond.
- 1998** • UofL established the Institute for Public Health Research.
- 2002** • The School of Public Health and Information Sciences (SPHIS) was established under the leadership of Dr. Richard D. Clover.
- 2002** • SPHIS opened the Center for Health Hazards Preparedness.
- 2007** • SPHIS received accreditation by the Council on Education for Public Health.
- 2009** • SPHIS moved to its current home on E. Gray Street, across from the city’s health department.
- 2013** • Dr. Craig Blakely began his tenure as Dean.
- 2014** • SPHIS became Kentucky’s Region IV Public Health Training Center site.
- 2015** • SPHIS launched the Commonwealth Institute of Kentucky and the CDC-funded Youth Violence Prevention Research Center.
- 2018** • SPHIS established NSF-funded Center for Health Organization Transformation.
- 2019** • SPHIS welcomed the Center for Creative Placehealing and Frazier Polypharmacy Program.
- 2020** • SPHIS community joined frontline efforts to combat COVID-19.

## What is public health?

Public health protects and improves the health of individuals, families, communities and populations—locally and globally. In short, public health is about creating conditions that make individuals, families, and communities healthier.

**Our nationally accredited programs prepare students for careers that are in high demand.**

- Biostatistics
- Bioinformatics
- Clinical Investigation Sciences
- Environmental Health
- Epidemiology
- Global Health
- Health Data Analytics
- Health Equity
- Health Management
- Health Policy
- Health Promotion

## MESSAGE FROM THE DEAN

I am pleased to share the exciting things happening at the University of Louisville School of Public Health and Information Sciences (SPHIS). Currently, our nation is battling the COVID-19 pandemic, confronting the plague of racism, and facing an economic recession. Our students are on-the-ground demanding change and assisting with case tracking and contact tracing. Our faculty experts are serving on COVID-19 response teams and producing vital research. SPHIS graduates are seeing an explosion of new job opportunities. Public health is visible again, and much of the population is starting to see the wisdom of investing in public health infrastructure. However, too many remain on the sidelines, skeptical about the validity of our public health recommendations.

As a discipline, public health saw similar growth after the horrific events of 9-11 and the anthrax threat. However, only four died from anthrax and much of that investment was dismantled over the last 15 years, leaving us woefully unprepared to face a COVID-19 pandemic. With stronger public health infrastructure and leadership in place, we would have acted much earlier to prepare for testing, case tracking, and contact tracing. The U.S. watched as some international colleagues got it right and many got it wrong—and we did nothing until it was too late to take evasive maneuvers to minimize the impact of the virus at home. Instead, we proclaimed the greatness of America, watched others struggle, and waited. Weeks later we witnessed the virus sicken and kill many of our family and neighbors before we finally awoke from our stupor and began playing catch-up. At that point, more targeted, less widespread restrictions could not help. We now clearly see the cost of those policy decisions.

My commitment since day one has been for the school to become a leading force for public health education, research, and practice. We have instructional programs that respond to both the needs of the marketplace and demands of prospective students, including several 100% online degrees and certificates. Our award-winning advisors and student services personnel are dedicated to students’ academic progress and well-being. We seek ways to integrate innovative research within instructional programs. Our faculty are active scholars and successfully compete for grants and contracts. We collaborate with partners across all sectors—government, healthcare, industry, academia, and non-profit—who share our vision for public health.

You should have a greater awareness of SPHIS and the vital contributions of our students, staff, faculty, and alumni after exploring these pages. However, since space was limited, we could only provide a glimpse into the amazing work of our SPHIS community.

To learn more and stay up to date, please visit [louisville.edu/sphis](http://louisville.edu/sphis) or connect with us on social media.

Be safe and stay healthy.



**Craig Blakely, PhD, MPH**  
Dean, School of Public Health & Information Sciences

# WORLD-CLASS UNIVERSITY WITH WORLD-CHANGING IMPACT

## UOFL AT A GLANCE

- Founded in 1798, the University of Louisville is one of the oldest city-supported college in the U.S.
- UofL is one of only 69 universities in the U.S. to achieve Carnegie Foundation Research 1 and Community Engagement classifications.
- UofL is ranked among the nation's best universities for African-American and LGBTQ+ students.
- Located in the largest metropolitan area in Kentucky, UofL offers outstanding off-campus learning experiences to students.
- UofL is one of the nation's top producers of Fulbright Scholars.



## UOFL PRESIDENT, NEELI BENDAPUDI

Dr. Neeli Bendapudi became the 18th president of the University of Louisville in May 2018. Under her leadership, we have adopted the vision to become **a great place to learn, a great place to work, and a great place to invest because we celebrate diversity, foster equity, and strive for inclusion.** At UofL, we're impacting the world here & beyond.

## MISSION

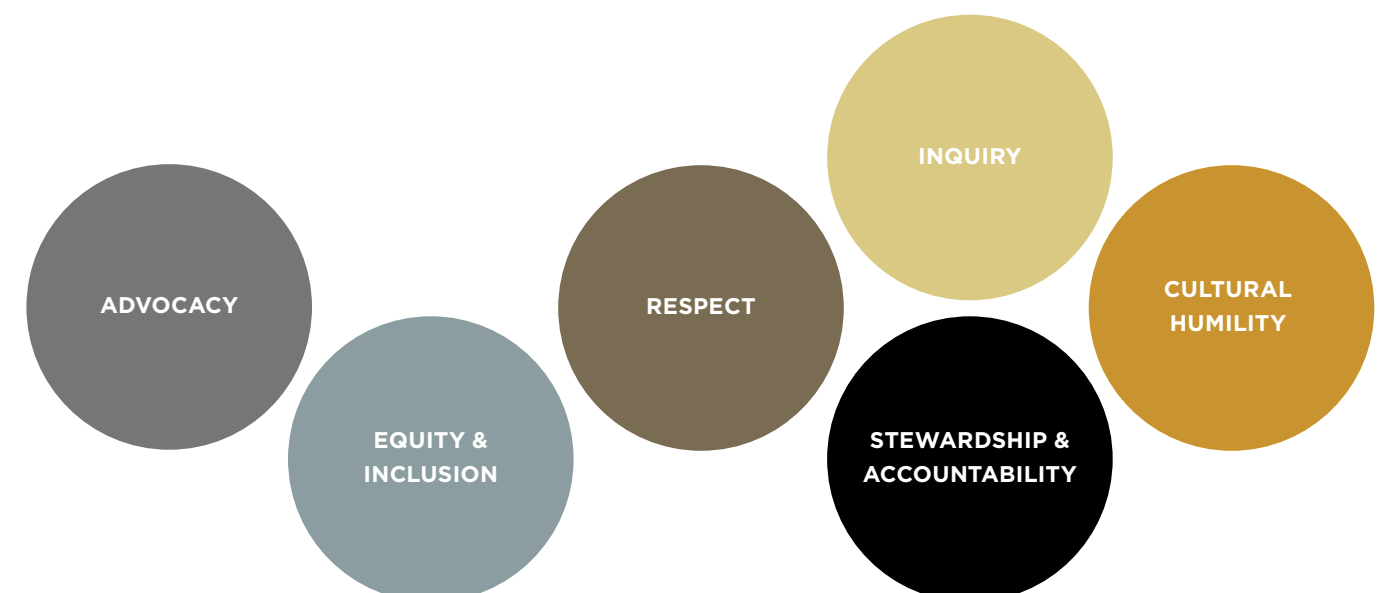
We are a metropolitan school that pursues excellence and inclusiveness through bold, strategic, and collaborative approaches to research, education, community engagement, policy, and practice. We strive to protect and improve public health and healthcare delivery systems in Louisville, the Commonwealth of Kentucky, the United States, and with our global partners.

## VISION

To be a leader in advancing health equity and social justice to ensure optimal health and well-being for all.

## VALUES

The SPHIS community aspires to create a culture that fosters the following:





# SPHIS AT A GLANCE

**485**  
STUDENTS

Overall student enrollment at SPHIS has doubled over the last five years and in fall 2019 we welcomed 485 students—223 undergraduate students and 262 graduate students.

**950+**  
ALUMNI

We are proud of our 950+ graduates who are improving health outcomes in myriad ways throughout the world.

**20+**  
PROGRAMS

We have 20+ instructional programs including bachelor's, master's, doctoral, professional certificates, and fully online programs.

**113**  
EMPLOYEES

The school has 45 faculty members, 35 staff members, and 33 graduate assistants.

## ACCREDITATION

The school is accredited by the Council of Education for Public Health (CEPH) and the M.S. in Health Administration program is accredited by the Commission on Accreditation of Healthcare Management Education (CAHME).



“*SPHIS offers a collaborative and engaging learning style with a particular emphasis on diversity and inclusion.*”

SONALI SACHIN SALUNKHE '19, MD, MPH  
PHD STUDENT IN HEALTH MANAGEMENT & POLICY



## PUBLIC HEALTH—A DEGREE THAT MAKES A DIFFERENCE

A degree in public health gives students the skills they need to improve the health of populations and communities as well as alleviate suffering caused by disease, injuries and health disparities. At SPHIS, students choose the path that best fits their unique journey. We offer multidisciplinary studies that prepare students to combat population health problems in the largest metropolitan area in Kentucky.



“As public health practitioners it is important to understand and learn from different cultures to better initiate and foster change.”

KENDRIA KELLY TAYLOR, MSPH  
DOCTORAL STUDENT IN THE DEPT. OF EPIDEMIOLOGY  
AND POPULATION HEALTH



## ACADEMIC PROGRAMS

### BACHELOR'S

- BA in Public Health
- BS in Public Health
- Accelerated BS & Master of Public Health
- Minors available

### MASTER'S

- Master of Public Health (MPH)
- MS in Biostatistics
- MS in Clinical Investigation Sciences
- MS in Epidemiology
- MS in Health Administration
- MS in Health Data Analytics

### PROFESSIONAL CERTIFICATES

- Certificate in Biostatistics
- Certificate in Clinical Investigation Sciences

### DOCTORAL

- PhD in Biostatistics
- PhD in Public Health Sciences - Environmental Health
- PhD in Public Health Sciences - Epidemiology
- PhD in Public Health Sciences - Health Management & Policy
- PhD in Public Health Sciences - Health Promotion & Behavioral Sciences

### ONLINE PROGRAMS

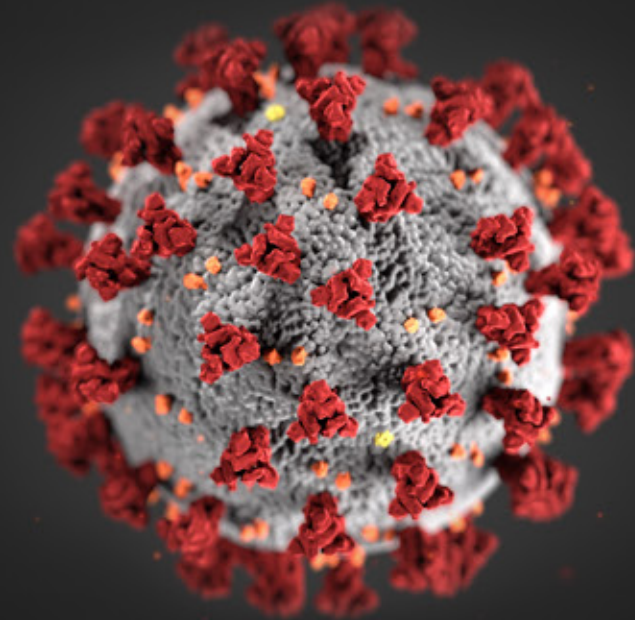
- MS in Biostatistics
- MS in Health Administration - Executive Track
- MS in Health Data Analytics
- Certificate in Biostatistics





## COVID-19 RESPONSE

Faculty, staff, students, and alumni are working with state and local partners to prevent further spread of COVID-19.



## SPHIS STUDENTS ASSIST WITH COVID-19 RESPONSE AT LOCAL HEALTH DEPARTMENTS

We are proud of the SPHIS students and alumni who are volunteering their time, gaining experience, and serving our community at this critical time.

### Lincoln Trail District Health Department (LTDHD)

Lyndsey Blair (left) and Johnnie Newton (right) are doctoral students in the Department of Epidemiology and Population Health. They are also involved in local-level COVID 19 response as employees with the LTDHD that serves Hardin, Larue, Marion, Meade, Nelson and Washington counties in Kentucky. They are involved in data management, data analysis, and presenting information pertaining to COVID 19 cases for LTDHD.

### Louisville Metro Department of Public Health & Wellness (LMPHW)

SPHIS is working with LMPHW to assist with efforts to increase local capacity for contact tracing. A total of 18 current students and four alumni were trained to serve as case investigators and case callers with the LMPHW's COVID 19 Epidemiology Group.



## COVID-19 PROJECTIONS IN JEFFERSON COUNTY, KENTUCKY

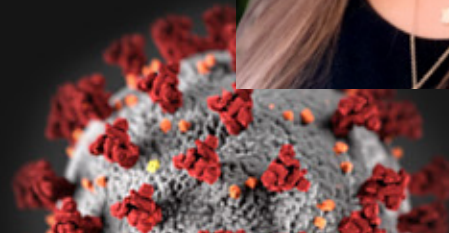
A team of UofL SPHIS researchers, led by Seyed Karimi, PhD, is projecting trends in COVID 19 cases in Jefferson County using a model of epidemic dynamics called the susceptible-exposed-infectious-recovered (SEIR) model, which allows the team to measure the effect of public health policy interventions to contain COVID 19. Initial results show the positive effect of social distancing measures in Metro Louisville. Dr. Karimi is an assistant professor in the Department of Health Management & System Sciences and is a health economist in the Louisville Metro Department of Public Health & Wellness. SPHIS is maintaining a website to make these data available to the public, which is available at [louisville.edu/sphis/research/covid-19-projections](https://louisville.edu/sphis/research/covid-19-projections).



## PREPARED TO LEAD

SPHIS alumna, Brittany Saltsman Bell '14, MPH, CPH, is an infectious disease epidemiologist at Bullitt County Health Department in Shepherdsville, KY. Her role in their COVID 19 response changed over the course of the event. She started out coordinating test requests and case management, but as the scope of the outbreak expanded, she became the agency's subject matter expert, directed case managers, and acted as the go-between for patients, case managers, medical providers, employers and many others.

*“I never could have imagined responding to a pandemic of this scale. These are things we read about in history books, not something we can even fathom happening in today's world. My MPH did open my eyes to how our modern world has set the stage for a pandemic of this scale; I just never imagined leading a response!”*







## SOLVING STREET HOMELESSNESS IN LOUISVILLE

An interdisciplinary research team led by Susan Buchino, PhD, OTR/L, assistant professor and assistant director in the Commonwealth Institute of Kentucky, is examining systemic issues of housing instability and homelessness with support from Louisville Metro. In June 2019, Dr. Buchino's team presented their report, "Solving Street Homelessness in Louisville, Kentucky," which included recommendations on policies, practices, and funding to aid Louisville in reducing the number of individuals who remain unsheltered. A few months later, Louisville Mayor Greg Fischer dedicated \$1 million from the city's FY20 operating budget to support initiatives chosen in collaboration with the Coalition for the Homeless to align with the eight recommendations outlined by Dr. Buchino and her team. UofL's team is also evaluating the effectiveness of those funded programs.



## ADDRESSING COMMUNITY CONCERNS IN RESEARCH

Ryan Combs, PhD, assistant professor in the Department of Health Promotion and Behavioral Sciences, engages the local community when creating communication campaigns to improve health knowledge and literacy. Campaigns have addressed depression, HIV, health literacy, childhood asthma, and LGBTQ adolescent health.



*“Listening to community voices and maintaining cultural humility are essential to research quality. My team works in partnership with local communities experiencing social and health disparities to improve their health and well-being. Our goal is to shed light on community concerns and develop interventions to improve population health. Our hope is that our research will play a role, however small, in creating a more just and equitable world.”*

## EXAMINING SOCIAL DETERMINANTS OF HEALTH

In 2019, Center for Health Organization Transformation (CHOT) researchers began working with The Humana Foundation to review the literature around social determinants of health such as social connectedness, food security, financial asset security, post-secondary success, and sustainable employment. The team will also conduct a social network analysis among communities funded by the Foundation to better understand existing inter-agency relationships as well as the impact of their investments to improve population health. J'Aime Jennings, PhD, associate professor and CHOT co-director, is leading the research alongside her colleague Liza Creel, PhD, MPH, assistant professor, and a team of doctoral and masters-level research assistants.



## CULTURAL WELL-BEING RESEARCH LEADS TO STARTUP COMPANY

Underestimated People Of Purpose (UPOP) is a new startup company helping organizations assess and improve culture and drive innovation. It is built around a cultural well-being survey and predictive analytics framework developed by a research team led by Theo Edmonds, JD, MHA, MFA, assistant professor and director of the Center for Creative Placehealing. The framework will help companies understand and improve their cultural well-being that can be a critical advantage in recruiting, retaining and motivating top talent, driving innovation and surviving rapid, unexpected changes. UPOP, UofL's first public benefit corporation spin-out, is structured to devote some of its profits to supporting underrepresented and underestimated public health and humanities entrepreneurs and to supporting advanced research on workforce culture, resiliency and inclusive innovation.







## EXPLORING HEALTH OUTCOMES IN RURAL KENTUCKY

Stephanie Boone, PhD, assistant professor in the Department of Epidemiology and Population Health, is leading research in Kentucky as part of the Risk Underlying Rural Areas Longitudinal (RURAL) study in partnership with the Boston University School of Medicine. The goal of this six-year project funded by the National Institutes of Health is to better understand what causes high rates of heart, lung, blood, and sleep disorders in rural Kentucky.



## NEW METHODS TO INFORM CANCER SCREENINGS

Dongfeng Wu, PhD, an associate professor in the Department of Bioinformatics and Biostatistics, is developing statistical methods and software that will inform lung cancer screenings for people with a history of negative screening results. Dr. Wu is using eight cohorts from mass lung cancer screening trials to investigate ideal screening time intervals using new statistical methods. Her goal is to apply the novel methods to other types of chronic disease screening. She will complete the study thanks to a three-year, \$400,000 grant from the National Cancer Institute.



## PUBLIC HEALTH AND OUR ENVIRONMENT

Ray Yeager, PhD, MPH, is an assistant professor in the Department of Environmental and Occupational Health Sciences and is a health geographer with the Christina Lee Brown Envirome Institute. Dr. Yeager is an active collaborator on the Green Heart Louisville project, UofL Superfund Research Center projects, and the Louisville Healthy Heart Study. The overarching goal of his research is to identify and create a better understanding of environmental factors affecting cardiovascular risk, particularly greenness and air pollutants, that enables high-impact and translatable research.





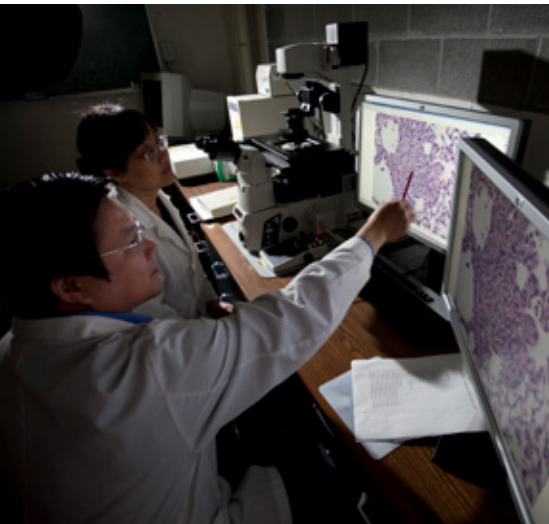
## BIOINFORMATICS & BIOSTATISTICS

The department's mission is to advance statistical science through methodological research, provide statistically sound collaboration to investigators, and disseminate new and existing knowledge in statistical science through education. Faculty are engaged in cutting-edge methodological research in biostatistics and provide support to investigators within and outside the university.



## EPIDEMIOLOGY & POPULATION HEALTH

The department's mission is to provide the highest quality education and training in the philosophy, principles and practice of epidemiology to the next generation of epidemiologists. Faculty conduct innovative, interdisciplinary research on the causal architecture of health and disease in populations; develop new methods to advance the science of population health; and apply research findings to the formulation of public health policy and interventions.



## ENVIRONMENTAL & OCCUPATIONAL SCIENCES

The department's mission is to prevent adverse health effects related to environmental and occupational exposures through research, education, and service. Faculty educate future scientists and policy makers who broadly affect the field of environmental health. They support dissemination of knowledge, formulation of policy, and implementation of strategies at national and local levels.



## HEALTH MANAGEMENT & SYSTEMS SCIENCES

The department's mission is to develop, disseminate, and apply evidence-based knowledge about health policymaking, systems design, and quality healthcare delivery. Their vision is to house academic programs that are highly regarded for making an impact on health policy and population health. Faculty accomplish this through research productivity and dissemination, quality education and professional development programs, and community service.

“The experience through SPHIS allowed me to blend years of practical experience with academic teachings.”

MATT RHODES '15, MPH, DIRECTOR OF HEALTH OPERATIONS, LOUISVILLE METRO DEPT. OF PUBLIC HEALTH & WELLNESS



## HEALTH PROMOTION & BEHAVIORAL SCIENCES

The department focuses on addressing preventable and unjust health differences between populations. Through a lens of health equity and social justice, faculty teach students to approach complex social and public health issues using theories, methods, and strategies from across diverse disciplines. Hands-on training strengthens the science and practice of public health, equipping our graduates to be leaders in a variety of settings.





## CIK **COMMONWEALTH INSTITUTE OF KENTUCKY**

CIK's mission is to inform policy and practice that will improve the health of populations in Kentucky and beyond by facilitating and supporting transdisciplinary collaborations for research and data analytics. Primary operations include community-based research, health policy research and education, and data warehousing and analytics.

## CHHP **CENTER FOR HEALTH HAZARDS PREPAREDNESS**

CHHP is a nationally recognized center that brings together information resources, human expertise, and research to improve the local, regional, and national response to outbreaks of infectious diseases, natural disasters, and potential acts of terrorism.

## PHTC **KENTUCKY'S REGION IV PUBLIC HEALTH TRAINING CENTER**

The Region IV PHTC aims to strengthen the competencies of the public health workforce, expose public health students to the value of working in underserved areas, and advocate for public health systems and policies. Activities include coordinating workforce trainings, student placements, and faculty and student collaborative projects.

## YVPRC **YOUTH VIOLENCE PREVENTION RESEARCH CENTER**

As a CDC-funded center, YVPRC researchers and their partners are developing, implementing, and evaluating a social norming campaign to reach youth and connect them to local resources and services. The strategy draws from a variety of disciplines and links experts with West Louisville youth in the campaign development, testing, and deployment process. YVPRC maintains a location in historically underserved West Louisville.

## CHOT **CENTER FOR HEALTH ORGANIZATION TRANSFORMATION**

CHOT, an NSF-funded center, is on the cutting edge of transforming the cost, quality, and access of healthcare services. CHOT's collaborative research projects seek to innovate and lead change in the healthcare industry. CHOT's current and past member organizations include the Association of Professional Chaplains, CHI Saint Joseph Health, Home Instead Senior Care, IDEAS xLab, National Association of Catholic Chaplains, Passport Health Plan, Sanofi, The Humana Foundation, UofL Hospital, and YouthBuild Louisville.

## CCP **CENTER FOR CREATIVE PLACEHEALING**

CCP helps scientific, business, and cultural communities work together to spark joy, economic growth, and increased workforce wellbeing. They do this by creating inclusive innovation experiences and culturally responsive scientific research that provoke new insights, connections, and opportunities for social cooperation and economic impact.

## STCC **STATISTICAL CONSULTING CENTER**

StCC faculty and staff provide expertise in statistical data analysis, experimental design, data management, and report writing. Consultants serve as investigators and key personnel on grant proposals for both short-term consulting projects and long-term collaborations. Since it began, StCC has helped hundreds of researchers with UofL and external healthcare organizations, research centers, businesses, and non-profit entities.

## FPP **FRAZIER POLYPHARMACY PROGRAM**

The Frazier Polypharmacy Program was established through the support of a local citizen and philanthropist with a long-standing concern about polypharmacy. Polypharmacy is the use of multiple prescriptions, over-the-counter medications, supplements, and vitamins that can diminish overall wellness. The endowed program studies medication use in all ages and explores what polypharmacy means to consumers, caregivers, employers, educators, healthcare providers, and others.

“*SPHIS laid the groundwork for my success to pursue a career in public health and food policy.*”

ALLEN RAKOTONIAINA '16, BS, MPH  
ANALYST WITH THE ASSOCIATION OF STATE  
AND TERRITORIAL HEALTH OFFICIALS



## COMMUNITY PARTNERSHIP & SUPPORT

SPHIS actively works with communities, across sectors, and among disciplines for the benefit of all people. We seek to build authentic and mutually beneficial relationships that value the expertise of all partners while sharing ownership and decision-making. We value partnerships that spark collaborative research and service projects, as well as opportunities for student exchanges.

### Partner organizations include:

Baptist Hospital  
Center for Health Equity  
Center for Women and Families  
Cities United  
Coalition for the Homeless  
Family Health Centers of Louisville  
Foundation for a Healthy Kentucky  
Humana Bold Goal initiative  
Kentuckiana AIDS Alliance  
Kentuckiana Black Nurses Association  
Kentucky Department for Public Health  
Kentucky Psychological Association  
Kentucky Public Health Association  
Louisville Metro Government  
Metro United Way  
Norton Healthcare  
Office for Safe and Healthy Neighborhoods  
Passport Health Plan  
Robley Rex VA Medical Center  
University of Louisville Hospital





## MAKE A GIFT

We humbly ask for your consideration of a gift to support our students, faculty, and school. Your gift supports our collective power to create healthier and more just communities. Your gift today supports the Louisville community, our region, nation, and world by building future public health leaders.

### Your gift can meet the needs of public health students by:

- Providing scholarships
- Affording attendance at professional conferences
- Supporting study abroad or international experiences
- Funding graduate assistantships and post-doctoral research

For more information, contact:

**Angela Champion Sprowl '99, '04,**  
**MPA, CFRE, Director of Development,**  
**UofL SPHIS**  
**[angelachampion.sprowl@louisville.edu](mailto:angelachampion.sprowl@louisville.edu)**  
**502-852-2031**

UNIVERSITY OF  
**LOUISVILLE**  
SCHOOL OF PUBLIC HEALTH  
& INFORMATION SCIENCES

## FOR ADDITIONAL INFORMATION

Please visit our website: [louisville.edu/sphis](https://louisville.edu/sphis)

Or contact us at  
University of Louisville  
School of Public Health and Information Sciences  
Louisville, KY 40292

**Phone:** 502-852-3299

**Fax:** 502-852-3294

**Email:** [sphismph@louisville.edu](mailto:sphismph@louisville.edu)

### CONNECT ON SOCIAL

