

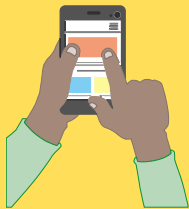


COMMUNITY LISTENING SESSIONS

FAMILY RESPONSE TO RACIAL INEQUITY

WE NEED YOU

The purpose of this study is to understand the perspectives, concerns, questions, and ideas from marginalized youth/young adults (ages 12 to 24), parents, and communities with regard to racial and social inequities and potential modes of change in Louisville.



CELLPHONE OR COMPUTER

Participants will need access to an electronic device



VIDEO AND MICROPHONE

with video and microphone



INTERNET ACCESS

Internet access can be provided, if needed

The University of Louisville, in partnership with Louisville Metro Office of Youth Development, invites youth development workers, youth, young adults and parents to participate in virtual community listening sessions.

If you have questions about participating in this study, please contact the Principal Investigator Dr. Aishia Brown