

# TRIUMEQ

**ABACAVIR 600 MG / LAMIVUDINE 300 MG /  
DOLUTEGRAVIR 50 MG**



## One pill, once a day.

Triumeq is a prescription pill that contains 3 medications in one tablet and is approved by the FDA for the treatment of HIV infection in adults and children over 12 years of age as a complete regimen.

## How should I take Triumeq?

- Take Triumeq at the **same time everyday**.
- Triumeq can be taken with or without food.

## What drugs interact with Triumeq?

- Triumeq should be taken **2 hours before or 6 hours after** antacids, iron/calcium supplements, multivitamins or prenatal vitamins, or any other medications containing aluminum, calcium, magnesium, or sucralfate.
- If you are unsure if a medicine is safe to take with your Triumeq, call the clinic pharmacist to double check.

## What should I do if I forget a dose?

- If you miss a dose, take the missed dose as soon as you remember!
- If it is within 4 hours of your next dose, skip the missed dose and take the next dose at your regular time.
- Do NOT take two doses at the same time.

## Side Effects

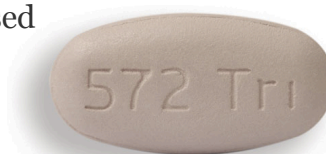
The most common side effects of Triumeq are nausea, headache, and difficulty sleeping.

Most side effects go away within a few days of starting your medicine

Contact the clinic if any of these side effects become severe or prevent you from taking your medicine.

Contact the clinic if you experience any of the following:

- Unusual muscle pain
- Dark colored urine
- Rash



**One pill,  
once a day**