

**University of Louisville**  
DEPARTMENT OF PROCUREMENT SERVICES  
LOUISVILLE, KENTUCKY

**Invitation No: IB-035-24**  
**Title: HSC Roof Replacement BP-2**  
**Addendum No. 2**

**Date: 4/30/2024**

The following pages shall clarify and/or modify the original bid document(s) as issued by the University of Louisville.

Bidder must acknowledge receipt of this and any addenda either with bid or by separate letter. Acknowledgement must be received in the Department of Procurement Services, Service Complex Building, University of Louisville no later than **5/7/2024 at 2:00PM, EST**. If by separate letter, the following information must be placed in the lower left-hand corner of the envelope:

**Invitation No: IB-035-24**  
**Title: HSC Roof Replacement BP-2**  
**Due Date: May 7<sup>th</sup>, 2024, by 2:00PM, EST.**

BY: \_\_\_\_\_  
Authorized Purchasing Officer

Receipt Acknowledged: \_\_\_\_\_  
FIRM

BY: \_\_\_\_\_

**IB-035-24**  
**Addendum 2**  
**Bidder Questions**

1. Regarding the existing vapor barrier, are we required to scrape the concrete deck clean of all asphalt? Can we leave what is adhered well in place and scrape what is loose, clean, prime and install the new vapor barrier?

University Response: The contractor can elect to remove loose asphalt and keep intact asphalt on the roof deck however, adhesion testing (performed in accordance with ASTM E90-96 Standard Test Method for Field Testing Uplift Resistance of Adhered Membrane Roofing Systems) will be required to meet the wind uplift requirements of the project and the manufacturer's installation requirements (assuming acceptance by the manufacturer to provide a warranty).

2. Are there restrictions to utilizing a crane to reach Bldg 55A if performed evenings or weekends?

University Response: Using a crane is possible under the following guidelines:

- The crane is scheduled on the weekend, Saturday preferred.
- The contractor is to provide a pick-plan
- The contractor is to receive approval from UofL
  - This entails the pick-plan and a meeting with the Physical Plant Department (PPD) Project Managers and the UofL Department of Environmental Health and Safety (DEHS).
- See below Exhibits for references to crane positioning/planning for previous projects

**55A 8<sup>th</sup>/9<sup>th</sup> Floor Vivarium**  
**Safety Planning Meeting**  
**April 28, 2023**

- I. Attendance
- II. Discussion Items
  1. Scope
    - a. 3 Picks total – 2 fans, 1 mixing plenum
  2. When/Duration
    - a. 6/17/23 (Saturday)
      - i. Approx. 2 weeks of duct install/prep in penthouse prior to fan install
      - ii. Fans shipping 5/1
    - b. Duration – Total 10 hours
      - i. 4 hours to erect, approximately 2 hours for picks, 4 hours to demo
  3. Crane Placement
    - a. Poynter provided Setup Location & 3D Lift Plan, Crane Worksheet & Load Chart included (58% Capacity, counterweight requirements, etc)
    - b. Crane placed In Abraham Flexner Way between generator pad drive and Nursing school parking
      - i. Trucks will stage in loading dock right of crane
        - Could pathway towards Preston be used to stage empty trucks? Access to Baxter building on weekends?
      - ii. Swing Radius
        - Pick from right to left to not swing over other surrounding buildings (MDR & RRL)
      - iii. Hospital Helicopter Pads
        - 3 Pads nearby
        - What is required for notification? Beacon or flag on mast? Padgett to confirm
      - iv. Underground Utilities
        - Poynter to GPR Scan crane location + 20' in all directions minimum prior to 6/17 (Pinpoint, OPS, Bloodhound) – Confirm GPR Scan for 5/13 to coordinate parking
        - Does UofL facilities have any documents/drawings of all existing utilities?
          - A. Vacuum lines diagonally from new generator pad area to Baxter
          - B. Tunnel from Nursing building towards East
          - C. Duct Tunnel from near new generator pad towards Chick-Fil-A
  4. Day-Of Logistics
    - a. Even with notice from Physical Plant, building could be occupied at anytime
    - b. Manpower – Poynter, Calhoun, UofL Safety
      - i. Minimum of 3 for West, East, and South of crane ground control
      - ii. Minimum of 20 entrances to be manned
      - iii. 3 for courtyard breezeways
      - iv. Additional manpower to clear floors prior to picks starting
    - c. Inspections
      - i. CCS Crane Policy - (included)
    - d. Communication
      - i. Directing Crane – Radios
      - ii. Signal Person – Poynter to confirm provided by Padgett (must be certified)
      - iii. Building/Entrance Safety – Group text
  5. Notifications
    - a.



Exhibit C

**Crane**

Grove GMK6300L - Luffing  
262.5' Main Boom at 65°  
68.9' Jib at 20 - 40° (Hydraulic Luffing  
Swingaway) (40° offset)  
Base: 100% Outriggers (28.5' x 27.8')  
Counterweight: 164200 lbs  
165.2' Lift Radius (360°)  
Crane Capacity at 165.2' = 8,600 lbs

**Load**

Load Line	600 lbs
Hook	668 lbs
Rigging	100 lbs

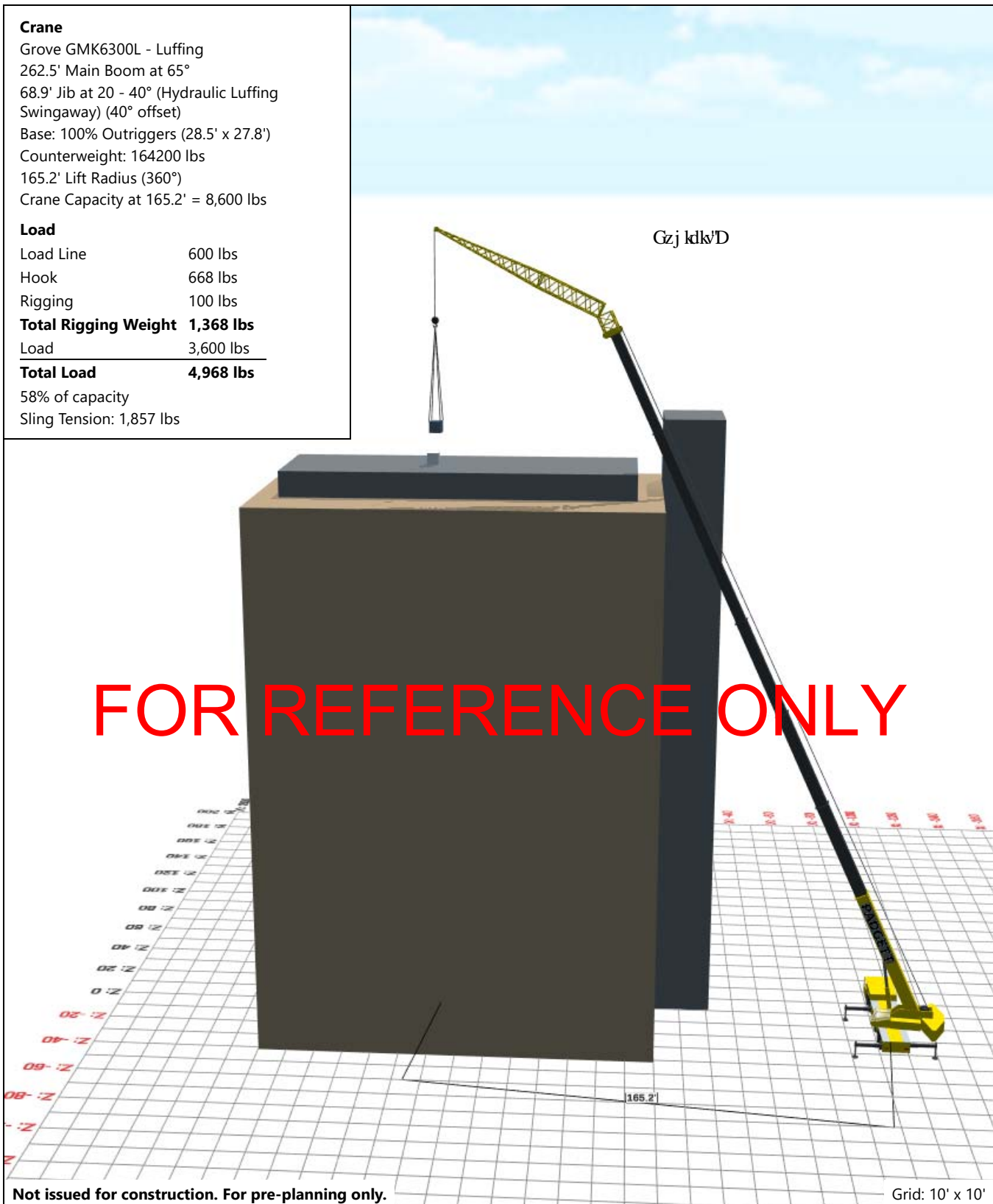
**Total Rigging Weight 1,368 lbs**

Load	3,600 lbs
------	-----------

**Total Load 4,968 lbs**

58% of capacity

Sling Tension: 1,857 lbs



Not issued for construction. For pre-planning only.

Grid: 10' x 10'

Title

Project

Customer

Descripti

Drawn By

4/24/2023

Created with 3D Lift Plan