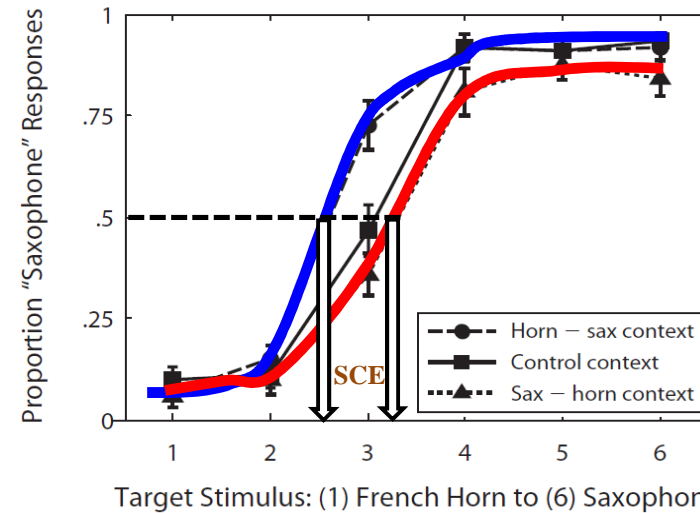


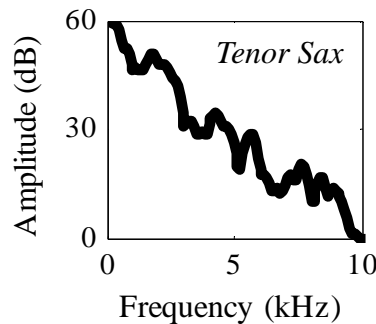
## Spectral Contrast Effect (SCE)

SCEs scale linearly in speech categorization:

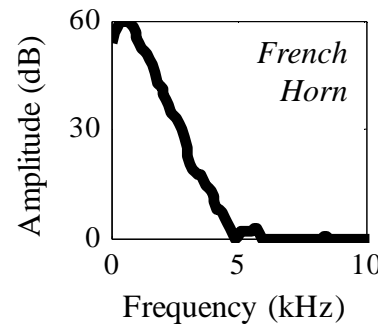
- $r = 0.74$  (vowels; Stip *et al.* 2015 *JASA*)
- $r = 0.99$  (vowels; Stip & Alexander 2016 *POMA*)
- $r = 0.99$  (consonants; Stip & Assgari 2017 *JASA*)
- $r = 0.66-0.93$  (vowels & consonants, 4x in 4pPPc3)



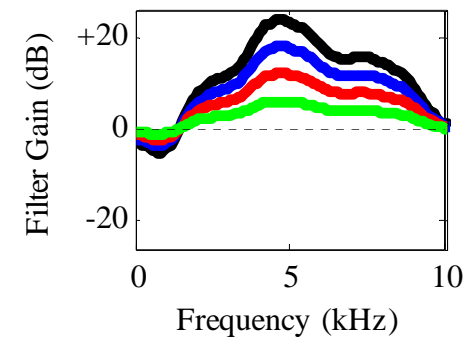
Stip  
*et al.*  
(2010)  
*APP*



—

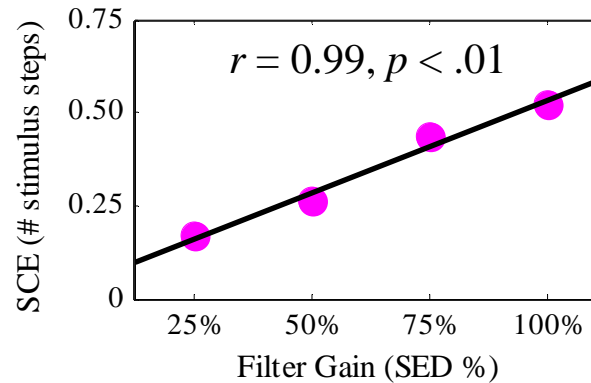


=



### Procedure (n=15)

1. Exposure
2. Practice (100 trials)
3. Experiment (4 blocks)
4. ~~Survey~~



**Categorization of complex sounds (speech and nonspeech) is acutely sensitive to preceding spectral context**