

UNIVERSITY OF LOUISVILLE

# 2023 ANNUAL SECURITY & FIRE SAFETY REPORT

Belknap, Health Sciences Center & ShelbyHurst Campuses



*"The best education in the world is  
useless if a student doesn't survive  
with a healthy mind and body."*

*-Connie and Howard Clery*

# Our Home



# CONTENTS

- Welcome..... 5**
- Message from the Chief of Police..... 5**
- University of Louisville Introduction..... 6**
  - Mission Statement.....6
  - Vision Statement .....6
  - Cardinal Principles .....7
- University of Louisville Police Department ..... 8**
- State and Local Law Enforcement Agencies ..... 8**
- Annual Security and Fire Safety Report Overview ..... 9**
- Purpose of the Annual Security and Fire Safety Report..... 9**
  - The Clery Act.....9
  - The Minger Act.....9
  - Title IX .....10
- Reporting and Disclosure of Campus Crime ..... 11**
- Reporting a Crime or Emergency..... 11**
  - Anonymous Reporting..... 11
  - Confidential Reporting.....12
  - Campus Security Authorities.....12
  - Disclosure of Crime Statistics .....13
  - Daily Crime Log .....13
  - Daily Fire Log.....13
  - Off-Campus Criminal Activity .....13
- Timely Warning and Emergency Notification Alert Administrators..... 14**
  - Timely Warnings.....14
  - Emergency Notifications .....14
  - Testing of the Emergency Notification Systems.....15
  - Louisville Metro Government Emergency Notifications .....15
  - Campus Emergency Response and Evacuation .....15
- Education and Awareness .....16**
- Security Awareness Programs for Students and Employees ..... 16**
  - Rape Aggression Defense, Awareness Education and Prevention..... 17
  - Active Shooter.....17
  - Crime Prevention.....17
  - Community Policing.....17
  - National Bike Registry.....17
  - Victim Assistance Program.....17
  - Emotional Support Animal.....17
  - Block by Block.....17

Be CARD SAFE ..... 18

Security of and Access to Campus Facilities and Residences ..... 19

Maintenance of Campus Facilities and Grounds ..... 19

**Health and Medical Policies and Programs ..... 20**

Alcohol and Drug Policies ..... 20

Alcohol and Drug Abuse Education Programs ..... 21

Sexual Misconduct, Domestic Violence, Dating Violence,  
Stalking Response, and Prevention ..... 22

Assistance for Victims: Rights and Options ..... 22

Educational Programs, Policies, and Procedures ..... 23

    If a Sexual Offense Occurs ..... 23

    Notifying Law Enforcement ..... 24

    Notification of Change in Academic, Working, Living and/or Transportation Situations ..... 24

    Procedures to Address Misconduct ..... 25

    Sanctions Imposed for Sexual Misconduct  
    and the Results of the Conduct Process ..... 25

    Sex Offender Registration Information ..... 26

    Missing Student Notification Policy ..... 26

Resources ..... 27

**Crime Statistics ..... 28**

Crime Statistics Report ..... 28

Clery Geography Definitions ..... 29

Clery Reportable Crime Definitions ..... 30

Clery Crime Statistics ..... 34

    Belknap Campus Crime Statistics ..... 34

    Health Sciences Center Campus Crime Statistics ..... 36

    ShelbyHurst Campus Crime Statistics ..... 38

**2022 Annual Fire Safety report ..... 41**

Message from the Fire Marshal ..... 42

    Mission Statement ..... 42

    Vision ..... 42

    Core Values ..... 42

Fire Safety ..... 43

    Fire Safety Education and Training Programs ..... 43

    On-Campus Student Housing Policies ..... 44

    Fire Emergency Procedures ..... 44

On-Campus Student Housing Fire Safety Systems and Statistics ..... 46

Quick Reference Guide ..... 50

# WELCOME

## Message from the Chief of Police

---

Thank you for reviewing the 2023 Annual Security and Fire Safety Report. Your time doing so indicates a level of interest in the safety of our campus communities, and I applaud this involvement. My approach to public safety includes: 1) addressing criminal acts and unsafe situations, 2) building community partnerships to enhance safety, and 3) reducing the fear of crime. I am proud to work with a team of dedicated professionals who are committed to serving everyone at the University with courage, competency, and compassion. Your safety is our number one priority, so you can focus on your education and furthering the University's local and global missions.



This report includes initiatives created specifically for our campuses. I encourage you to utilize the Card Cruiser program, sign up for UofL alerts, enroll in a R.A.D. (Rape Aggression Defense) class, and follow the safety tips within. Nothing is more important than the safety of our campus communities, and nothing is more impactful to this safety than a community who polices itself. We need everyone's eyes, ears, and voices to help make our campuses safe havens in Louisville.

Please do not hesitate to call on the Department of Public Safety for any of your safety needs. Our team includes the University of Louisville Police, Security, Fire Marshall Services, Emergency Management, Physical Security, and Parking and Transportation Services. We are always here and ready to serve!

Sincerely,



Steven D. Green

Chief of Police/Director of Public Safety

Steven.green@louisville.edu

(502) 852-6111

## University of Louisville Introduction

The University of Louisville is a state supported research university located in Kentucky’s largest metropolitan area. It was a municipally supported public institution for many decades prior to joining the university system in 1970. The University has three campuses.



**BELKNAP ACADEMIC CLASSROOM BUILDING**



**CLINICAL & TRANSLATIONAL RESEARCH BUILDING**



**FOUNDERS UNION BUILDING**

### Belknap Campus

Belknap Campus is considered the school’s main campus and is located south of downtown Louisville. At 274 acres, it is home to eight of the 12 academic colleges. The campus also includes L&N Federal Credit Union Stadium (football), Owsley B. Frazier Cardinal Park (softball), a track and soccer stadium, Bass-Rudd Tennis Center, and Patterson Stadium (baseball).

### Health Sciences Center Campus

East of downtown Louisville, the Health Sciences Center (HSC) is the heart of the Louisville medical center and contains the School of Medicine, School of Nursing, School of Public Health & Information Sciences, and the School of Dentistry. Also on the campus are several specialty hospitals, numerous UofL research buildings and state-of-the-art facilities.

### ShelbyHurst Campus

The Shelby Campus is a 230 acre plot of land located in eastern Louisville, on Shelbyville Road near Hurstbourne Parkway. Originally the site of the Kentucky Southern College, UofL acquired the land which now houses an array of business, government and technology endeavors. The campus also includes offices for UofL’s Delphi Center for Teaching and Learning, Kent School of Social Work and Family Science and Event and Conference Services as well as a conference center.

### Mission Statement

The University of Louisville pursues excellence and inclusiveness in its work to educate and serve its community through:

1. teaching diverse undergraduate, graduate, and professional students in order to develop engaged citizens, leaders, and scholars,

2. practicing and applying research, scholarship and creative activity, and
3. providing engaged service and outreach that improve the quality of life for local and global communities.

The University is committed to achieving preeminence as a nationally recognized metropolitan research university.

### Vision Statement

The University of Louisville will be recognized as a great place to learn, discover, connect and work because we celebrate diversity, foster equity and strive for inclusion.

Cardinal Principles

**Community of Care**

**Accountability**

**Respect**

**Diversity and Inclusion**

**Integrity and Transparency**

**Noble Purpose**

**Agility**

**Leadership**





The University of Louisville Police Department serves as the institution's primary law enforcement agency with a mission to prevent crime through education; promote safety through deterrence, innovation, and community partnerships; and improve the quality of life for everyone within our campuses. We are committed to cultivating campus environments conducive to the teaching, research, and service missions of the University.

## University of Louisville Police Department

The University of Louisville Police Department (ULPD) protects and serves the university community by providing professional law enforcement and security services. ULPD is a fully commissioned police department and a member of the International Association of Campus Law Enforcement Agencies (IACLEA) with a staff of full time sworn police officers and non-sworn security officers. These sworn officers receive their law enforcement authority through the provisions of Kentucky Revised Statutes 164.950 -164.990. ULPD officers are responsible for a full range of public safety services, including crime reports, investigations, medical/injury response, fire emergencies, traffic collisions, enforcement of state and local laws, and all other incidents that require police assistance. Officers conduct patrol by car, foot, bicycle, and/or ATV 24 hours a day, seven days per week. ULPD has the responsibility for law enforcement

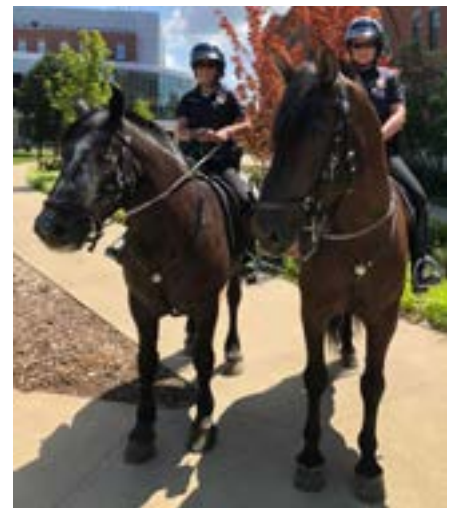
at the UofL Belknap Campus, HSC Campus, and ShelbyHurst Campus and on streets running through and adjacent to these locations. ULPD has county-wide law enforcement jurisdiction obtained through an interagency agreement with the Jefferson County Sheriff's Office. The Kentucky Law Enforcement Professional Standards Committee awarded the ULPD a Certificate of Accreditation. This certificate states that ULPD has fulfilled all the accreditation standards as established by the Kentucky Association of Chiefs of Police. ULPD is a part of the Department of Public Safety, which also includes Emergency Management, the Fire Marshal Office, Emergency Management, Physical Security, and Parking. ULPD is located at the Floyd Street Parking Garage, 2126 South Floyd Street, Suite 100, Louisville, KY 40292, (502) 852-6111.

[University of Louisville Police](#)

## State and Local Law Enforcement Agencies

ULPD Officers work closely with local, state, and federal law enforcement agencies to provide services to the university community. ULPD is part of the 911 Emergency System and has direct radio communication with Louisville Metro Police Department (LMPD) and through the Louisville 9-1-1 Dispatch Center. Officers meet their counterparts from the LMPD about common crime problems and criminal activity on or near campus. Information is regularly exchanged regarding crime related reports and statistics, including those for off-campus locations owned, controlled or leased by the University of Louisville.

[Louisville Metro Police Department](#)





# ANNUAL SECURITY AND FIRE SAFETY REPORT OVERVIEW

## Purpose of the Annual Security and Fire Safety Report

The University of Louisville Police Department (ULPD) publishes an Annual Security and Fire Safety Report (ASR) which discloses crime statistics, security information, and fire safety to comply with the Federal Jeanne Clery Disclosure of Campus Security Policy and Campus Crime Statistics Act and Kentucky's Michael Minger Act. These acts require colleges and universities to alert the campus community to certain crimes in a timely manner which will aid in the prevention of similar crimes. The intent of such alerts regarding a criminal incident is to enable people to protect themselves. The ASR includes policies, procedures, education, and services information. This allows all families, students, and employees to be aware of their safety environment and be best prepared in the event of an emergency.

### The Clery Act

The Jeanne Clery Disclosure of Campus Security Policy and Campus Crime Statistics Act (the Clery Act) is part of the Higher Education Opportunity Act. It requires institutions of higher education that receive federal financial aid to report specified crime statistics on college campuses and to provide members of the campus community with other safety and crime information. The U.S. Department of Education holds enforcement authority for the Clery Act and there is a substantial financial penalty for each violation of the regulations that define the reporting requirements.



[Purpose of the Clery Act](#) (1.19 minutes)

[Honoring 25 Years of the Clery Act](#) (2.04 minutes)

### The Minger Act

The Michael Minger Life Safety Act (the Minger Act) requires institutions of higher education in Kentucky to report crime statistics to current and prospective students and employees. In addition, the Act requires institutions to maintain a daily Fire Log, to report a fire or threat of fire to the State Fire Marshal immediately. Institutions must submit an annual report of campus safety policies, programs, and statistics to the Kentucky Council on Postsecondary Education (CPE).



[Michael H. Minger Foundation Mission Statement](#) (3.17 minutes)

## Title IX

Title IX is a federal law that prohibits discrimination and harassment based on sex or gender in federally funded education programs and activities. Sexual misconduct includes Sexual Harassment (includes quid pro quo and hostile environment); Sexual Assault; Domestic Violence; Dating Violence; and Stalking. The University of Louisville is committed to providing a safe and non-discriminatory environment for all members of the university community and is devoted to maintaining a campus environment free from sexual misconduct by responding appropriately, effectively, and equitably to Title IX concerns. The Title IX Coordinator is the designated university official with primary responsibility for coordinating the university’s compliance with Title IX.

The mission of Title IX remains the same: As envisioned and enacted by Congress, Title IX seeks to reduce or eliminate barriers to educational opportunity caused by sex discrimination in institutions that receive federal funding. How we accomplish the mission of Title IX has changed, but the mission of Title IX remains the same.

### **Significant changes to Title IX include:**

- ▶ Applies to employees and students.
- ▶ Adds jurisdiction boundaries.
- ▶ Adds “must” and “may” dismiss criteria for complaints.
- ▶ Changes the role of the Advisor:
  - Advisor may accompany their party in the investigation portion.
  - Advisor (not complainant nor respondent) is allowed to cross-examine opposing party.
- ▶ Changes to the Hearing Process:
  - Requires live hearings (hearings may be virtual).
  - Cross-examination of parties allowed only by advisor of opposing party.
  - The presiding hearing official will make determinations of relevancy for questions posed by advisors.
- ▶ Requires Extensive Training:
  - Training content must be posted on the Title IX website.

In response to these required changes, the University enacted two new policies: The Employee Title IX Sexual Misconduct Policy and the Student Title IX Sexual Misconduct Policy. Both Policies can be found on the [Title IX webpage](#).



# REPORTING AND DISCLOSURE OF CAMPUS CRIME

## Reporting a Crime or Emergency

As a community of more than 25,000 members, the University of Louisville experiences traffic collisions, injuries, crimes, and other emergencies. All students, faculty, staff, and visitors share the responsibility of preventing crime. Everyone should report all crimes or suspicious activities whether you are a victim or a witness. UofL encourages accurate and prompt reporting of all crimes, suspected crimes, or other emergencies to ULPD for the purpose of investigating the crime, making a timely warning report, if necessary, and for the annual disclosure in the crime statistics. In an emergency, dial 9-1-1. For non-emergencies, call (502) 852-6111. The ULPD telecommunications center is open 24 hours a day, 7 days a week. A trained telecommunicator will direct the appropriate police response to the emergency or suspicious activity. The ULPD tele-communicators have direct radio and phone communications with LMPD, Louisville Fire and other first responders. The ULPD telecommunications center is equipped with a telecommunications device (TDD) for communications with the hearing impaired.

### WHEN REPORTING A CRIME, PROVIDE AS MUCH INFORMATION AS POSSIBLE INCLUDING:

Your Name

Need for Medical Assistance

Location and Time of Incident

Description of Suspect

Description of Vehicles

### Anonymous Reporting

If you are the victim of a crime and do not wish to pursue action with the University or the criminal justice system, please consider making an anonymous report. Given permission, the ULPD Chief, or designee (CSAs), can file a report of the incident without revealing your identity. The purpose of the confidential report is to comply with your desire to keep the matter private yet allow the University to keep an accurate number of incidents and help determine patterns of crime. This allows the University to alert the community of potential danger when necessary. Reports filed in this manner are counted and disclosed in the annual crime statistics for the University. You can call ULPD and ask that information remain confidential or complete an [Anonymous Reporting Form](#).



## Confidential Reporting

Professional Counselors, Pastoral Counselors, and Campus Medical Providers are considered confidential reporting resources and are not considered to be Campus Security Authorities (CSA). Prevention, Education, and Advocacy on Campus and in the Community (PEACC) Counselors, Pastoral Counselors, and Campus Medical Providers are not always required to report crimes for inclusion into the annual disclosure of crime statistics. As a matter of policy, PEACC, Pastoral Counselors, and Campus Medical Providers encourage persons being counseled of the procedures to report crimes on a voluntary and/or anonymous basis for inclusion in the annual crime statistics as described in the Reporting and Disclosure of Campus Crime section of this report.

## Campus Security Authorities

Even at institutions with a police department on campus, a student who is a victim of a crime may be more inclined to report it to someone other than the campus police. Crimes may also be reported to a **Campus Security Authority (CSA)**. A CSA is any official of the institution who has a significant responsibility for students and campus activities. CSAs are defined as: a campus police department, individuals who have responsibility for campus security but are not part of the UofL Public Safety Office, individuals or organizations to which students and employees would report crime, and any person who has the authority and duty to act or respond to issues on behalf of the University. Examples of CSAs include but are not limited to those overseeing student housing or student activities, athletics directors and coaches, advisors to student organizations, and health educators. *Examples of individuals who would not meet the criteria for being campus security authorities include a faculty member who does not have any responsibility for student and campus activity beyond the classroom, and clerical or cafeteria staff.* CSAs are not responsible for taking any action regarding the situation other than to report it to ULPD. Persons who have been designated as CSAs by the University are notified of that designation and provided appropriate training. CSA Training is offered in person and/or instructional video. This training is required annually.

### [CSA Reporting Form](#)

CSAs may include, but are not limited, to the following:

- ▶ Deans and Assistant/Associate Deans
- ▶ ULPD, Security, and Tele-Communicators
- ▶ Director, Hall Directors, Residential Assistants, and Security Staff for Housing
- ▶ Director, Assistant Director, Coaching Staff, and Trainers for Athletics
- ▶ Advisors for Student Organizations
- ▶ Director of the Women's Center
- ▶ Advisors and Assistant Advisors for Academics
- ▶ Any faculty or staff employee that leads or participates in education travel experiences sponsored or organized primarily by UofL that include students, whether credit-bearing or non-credit-bearing, including international or domestic travel.

## Disclosure of Crime Statistics

Crime statistics are gathered from several sources within the University community including, but not limited to ULPD, Dean of Students, Housing, and local law enforcement agencies. Crimes occurring on campus, on campus student housing, on public property immediately adjacent to the campus, and in non-campus buildings owned or controlled by the university, and in off-campus buildings are included. Each year, an email notification is sent to all enrolled students, faculty and staff providing direct links to access the Annual Security and Fire Safety Report along with the Daily Crime and Fire Log online. This report will provide information on safety and security at all University of Louisville campuses: **Belknap**, **Health Sciences Center** and **ShelbyHurst**. Printed copies of the report may be obtained at the ULPD, 2126 S. Floyd Street, Suite 100 or by calling (502) 852-6111.

[UofL Annual Security and Fire Safety Reports](#)

## Daily Crime Log

ULPD maintains a Daily Crime Log and records all crimes on campus geography, in a non-campus building or property owned or operated by the University “in a reasonably contiguous geographic area” on public property within, adjacent to or immediately accessible from the campus, or within the police department’s patrol jurisdiction. The Daily Crime Log contains the nature, date and time the incident occurred, and a general location of each crime reported to the department, as well as the disposition of the complaint. ULPD posts incidents in the Daily Crime Log within two business days of receiving a report of an incident. An exception to this rule is if the disclosure is prohibited by law, or if the disclosure would jeopardize the confidentiality of the victim. In accordance with the Clery Act, information may be temporarily withheld if there is clear and convincing evidence that the release of information would: jeopardize an on-going investigation, jeopardize the safety of an individual, cause a suspect to flee or evade detection or result in the destruction of evidence. The Daily Crime Log is available for prospective students and the general public.

[Daily Crime Log](#)

## Daily Fire Log

ULPD maintains a Fire Log and records all fires that occur within campus student housing, affiliated properties, and other locations on campus. The log is a record of fires that were already extinguished and those discovered still burning. The reported date, incident date, time, location, and cause is included in

the log. Fires can be reported to ULPD by anyone.

ULPD posts incidents in the Fire Log within two business days of receiving a report of a fire incident, except for days the University is closed. The Fire Log is available for public inspection online and at the department, located at 2126 S. Floyd St. #100. Anyone may have access to the log, whether or not they are associated with the University.

[Daily Fire Log](#)

## Off-Campus Criminal Activity

When a University of Louisville student is involved in an off-campus offense, the ULPD officers may assist with the investigation in cooperation with local, state or federal law enforcement. The university has affiliated housing located off campus and ULPD responds to and is the primary investigative agency. The Louisville Metro Police Department (LMPD) routinely works and communicates with ULPD on any serious incidents occurring off campus, within neighborhoods, and businesses immediately surrounding the campus. While LMPD has primary jurisdiction in all areas off-campus, ULPD officers can, and do respond to student related incidents that occur near the campus. Students in these incidents may be subject to arrest by LMPD and University disciplinary proceedings through the Dean of Students. ULPD officers have direct radio communication with LMPD, Louisville Metro Fire Department (LMFD) and Louisville Emergency Medical Services (LMEMS) to facilitate a rapid response if needed.

## Timely Warning and Emergency Notification Alert Administrators

Authorization to carry out a timely warning or an initial emergency notification to the University community lies within the judgment of the Alert Administrator. Alert Administrators are individuals designated to activate the University of Louisville Alert System and represent the following members:

- ▶ ULPD (Chief, Assistant Chief and Majors), University Emergency Manager
- ▶ Office of Communications and Marketing Personnel
- ▶ ULPD Tele-Communications Operators
- ▶ Information Technology Services (System Analyst and VOIP Network Administrator)

### Timely Warnings

If a situation arises, either on or off-campus, that constitutes an on-going or continued threat, in the judgment of the Chief of ULPD, a campus-wide “timely warning” will be issued. The ULPD Police Chief or designee will notify the University community through the Campus Emergency Notification Alert System that utilizes e-mail, text messages and university office phones, etc. This overlapping means of communication ensures that in the event one method fails or malfunctions, the University community still receives the message. This emergency system is tested semi-annually.

#### Delivery methods:

*(Alert Administrators decide which method and how many are enough to notify the intended audience.)*

- ▶ Voice over Internet Phone (VOIP)
- ▶ Text message/ Email- to all UL addresses
- ▶ University and ULPD website posts
- ▶ Flyers posted around campus
- ▶ UofL Today and Student Weekly News & Events publications

#### Alerts will be issued for, but not limited to, the following criminal incidents:

- ▶ Murder/Non-Negligent Manslaughter
- ▶ Aggravated Assault
- ▶ Robbery involving force or violence
- ▶ Sexual Assault
- ▶ Major incidents of Arson
- ▶ Other incidents will be evaluated on a case by case basis to determine the threat to the community

#### Alerts will not be issued when:

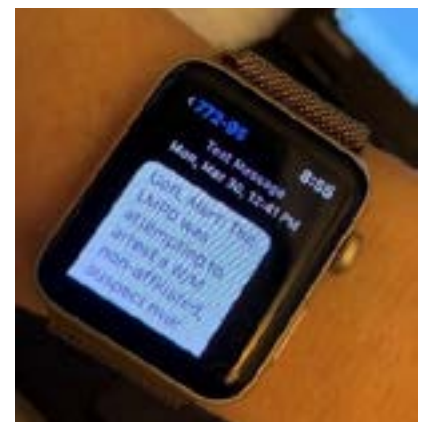
- ▶ The subject(s) are apprehended, and the threat of imminent danger has been mitigated
- ▶ A report is not filed and/or ULPD is not notified of the crime in a timely manner (ex. If report/notification is received 5 days after occurrence)

### Emergency Notifications

Upon determination of an emergency or dangerous situation, the University will immediately initiate an “emergency notification”. The only exception would be when responsible authorities feel the notification could compromise safety in assisting victims and emergency response.

An emergency or dangerous situation posing an immediate threat to the health and safety of UofL students, faculty, staff, and visitors can be recognized in the following ways:

- ▶ *Witness an event.*
- ▶ *Receive a report or information from the ULPD, administrators, faculty, staff, student(s), or campus visitors.*
- ▶ *Receive reliable information from an outside source, such as local police, fire, and news outlet or government entity.*
- ▶ *Receive information from other reliable sources.*



### Delivery Methods:

*(Alert Administrators decide which method and how many are enough to notify the intended audience.)*

- ▶ Voice over Internet Phone (VOIP) Alert
- ▶ Text Messaging/E-mail System
- ▶ Bulk E-Mail - E-Mail to all U of L addresses
- ▶ University of Louisville web site
- ▶ Outdoor Warning Siren/Public Address
- ▶ Weather Radio - National Oceanic and Atmospheric Administration (NOAA) and National Weather Radio (NWR)
- ▶ Trimarc Signs - Message signs on the interstate highway
- ▶ 1610 AM Radio - Local government's station for emergency announcements
- ▶ Media Outlets - TV and Radio
- ▶ Press Conference
- ▶ Social Media - i.e. Facebook and Twitter

### Testing of the Emergency Notification Systems

The University of Louisville tests its alert system semi-annually each calendar year. Testing is normally conducted on the second Tuesday in March and the Tuesday before the first home football game of the year. The alert system, which includes text messages, University phones, emails, sirens, and weather radio will be activated. Scheduled testing will be announced and published in the UofL Today online bulletin.

### Louisville Metro Government Emergency Notifications

In the event an emergency occurs off-campus and the Louisville Metro Emergency Management Agency determines that the emergency may impact the University, the Louisville Metro Emergency Management Agency will contact the University to request that the University implement the UofL alert. Upon receipt the ULPD dispatcher will typically initiate the alert systems. Communications and Marketing will typically initiate the bulk e-mail and activate the Web Page Messages. Louisville Metro Emergency Management Agency also has their own notification system called "LENSAlert" and members of the University community are free to enroll in that system as well at [LENSAlert](#).

### Campus Emergency Response and Evacuation

Located within ULPD and Public Safety, the Emergency Management Program leads the coordination of campus, local, state, federal, and other community resources to provide comprehensive emergency management operations to the University of Louisville community. The Emergency Management Program oversees the prevention, mitigation, preparedness, response, and recovery activities that protect life, property, and the environment from all man-made and natural threats and disasters that impact the campus community and its neighbors. This includes Building Emergency Action Plans, Severe Weather, Earthquake, Fire, Hazardous Material and Chemical Spills, Gas leaks, Utility Interruption, Workplace Violence, Terrorism, Active Shooter, Bomb Threat, etc.

[Emergency Management](#)





## EDUCATION AND AWARENESS

### Security Awareness Programs for Students and Employees

ULPD encourages students, faculty, and staff to be responsible for their own security as well as the security of others. The University strives to increase safety and security awareness by offering educational programs and disseminating information related to personal safety. Personal safety and property security are everyone’s responsibility at UofL. ULPD urges all members of the University community to participate in making our campus as safe as possible. If you develop good security habits, you can assist us in safeguarding your property and University property. Although the UofL campus and the surrounding city are relatively safe, they are still vulnerable to criminal activity. Educate yourself about the resources available at orientation, on UofL’s website, trainings, pamphlets, presentations, and more. ULPD and other University organizations and departments provide crime prevention and awareness presentations. The presentations cover many topics including, but not limited to, sexual assault, drug and alcohol abuse, counseling, theft, vandalism as well as educational sessions on personal safety and residence hall security.



## ULPD is available for the following:

### Rape Aggression Defense

Rape Aggression Defense (R.A.D.) is a comprehensive twelve (12) hour course that begins with awareness, prevention, risk, reduction, and avoidance while progressing on to the basics of hands-on defense training. R.A.D. is taught by a certified instructor.

### Rape Awareness, Education, and Prevention

Presentations are offered yearly and on request to



the campus community.

### Active Shooter

Video presentation and discussions are designed to instill the survival mindset and teach realistic strategies for dealing with an active shooter on campus. These presentations are given to all new faculty and staff at their respective orientation and upon request for monthly department safety meetings. If unable to schedule a live presentation, it is available online at [Active Shooter Training](#). The active shooter video can be found at [Active Shooter Video](#).

### Crime Prevention

Presentations are made to new students, faculty, and staff at their respective orientations, residence halls, campus fraternity, and sorority residents. Presentations are made available to the entire campus community upon request.

### Community Policing

ULPD Officers attend meetings of campus associations, residence halls, and other groups to provide crime prevention information and to hear the concerns of members of the University community about crime and safety issues.

### National Bike Registry

ULPD works with the National Bike Registry and encourages the University community to participate. For a nominal fee, you can register the serial number of your bicycle to be maintained within their secured database. If the bicycle is ever stolen and/or recovered, it can be identified and returned to the owner. You can participate and register by phone at (800) 848-BIKE or [Bike Registration](#).

### Victim Assistance Program

The program provides assistance in criminal prosecution, victims' rights and other areas to victims of on campus crimes.

### Emotional Support Animal

Support and Therapy Dogs are trained to provide assistance to those students, faculty, or staff when needed following stress or emotional trauma. Available for hugs and university events. K9 Hoss retired in 2022. We look forward to adding another K9 to our team. Coming Soon!

### Block by Block

The Louisville Medical & Education District, also known as LOUMED, has a new ambassador program in partnership with Block by Block. Block by Block is the nation's leading provider of safety, cleaning and hospitality services for districts across the U.S. LOUMED includes the University of Louisville Health Sciences Center and downtown facilities of UofL Health, as well as Jefferson Community and Technical College and Norton Healthcare.

## Be an active bystander.

If you see something, say something. If you see anyone in an uncomfortable, unsafe, or suspicious situation, please contact the ULPD, (502) 852-6111.

## Be CARD SAFE...

- ▶ Walk or jog with a friend, avoid being alone if possible use well-lit routes to promote safe travels from the middle of Belknap Campus to the Swain Student Activities Center, the Ville Grill, and to some of the affiliated properties.
- ▶ Be aware of your surroundings. (Know where you are and who is around may help you find a way to get out of a bad situation.)
- ▶ Avoid dark streets, high shrubbery and short cuts (it's more difficult to be seen and alert others if help is needed.)
- ▶ Do not wear headphones or ear buds while walking or jogging.
- ▶ Walk with confidence – Even if you don't know where you are going, act like you do.
- ▶ Utilize the **CardCruiser, (502) 852-6111**, ULPD is happy to transport students, faculty, and staff up to 4 blocks off campus from dusk to dawn.
- ▶ Park Smart– find a well-lit area, lock doors, hide valuables out of sight, and check on your vehicle.
- ▶ Always keep your residence secure.
- ▶ Lock your bicycle with a U-Shaped bar or shackle locks.
- ▶ Sign up for UofL Alerts.  
Download and utilize the Safety App– The Campus Safety App allows students to create safety profiles to alert friends and family when they are walking alone. It also features a safety timer to alert campus security when a student does not arrive at a planned destination within a certain amount of time. The app has a panic button that, when pressed, alert campus security of where a student is. The app is free but users must sign up for the services.

## Security of and Access to Campus Facilities and Residences

During the normal workday, locking and unlocking of doors and buildings is provided by the University's Physical Plant Department. After normal business hours, manual locking and unlocking is the responsibility of ULPD. The University of Louisville issues students, faculty, and staff members a University identification and access card. The card is used to gain entry on an authorized basis to University facilities.

ULPD will not open rooms or facilities without the proper authorization from the person responsible for the facility (i.e. Vice-President, Dean, Chair, Director or Department Head). Persons who have no other means of entry (i.e. students, temporary or part-time employees, etc.) must be listed on an authorization entry list form. The authorization entry form must be on file with the Department of Public Safety/Physical Security. The electronic locking and unlocking of buildings is the responsibility of Physical Security. To obtain electronic access for an employee(s) or student(s), after-hours access or for buildings that are secured 24/7, the Unit Business Manager, Director or unit's Vice President or Dean must fill out the form titled "Request for Adding or Removing Keycard Access for UofL Students/Employees". If there is a need to grant access to a person(s) who is not part of the University community (such as contractors, vendors, researchers, and/or visitors), the requesting department will be required to fill out the form titled "Authorization for Adding Keycard/ Electronic Door Access for Non-UofL Entity". The forms are listed on the University of Louisville Police Department's website, under Physical Security (you will need to log in first). <https://louisville.edu/police/physical-security>



Residence halls are locked 24 hours-a-day and require the use of an electronic key fob or student ID card to access the residence throughout the school year. Electronic access is always restricted to residents or authorized users of a residential area or building. Guests of residents are welcome in University residence halls in accordance with Campus Housing guidelines. A guest is defined as any person invited into a residence hall by a resident and whom are not contracted to live in the residence hall. Residents are expected to escort their guests. Residence halls have a central front desk which is staffed 24 hours a day by Campus Housing personnel or security staff. The Campus Housing Staff respond to a variety of situations and have been trained in University resources and customer service skills.



## Maintenance of Campus Facilities and Grounds

Facilities and grounds keeping are maintained in a manner that maximizes safe conditions. ULPD patrols the campus and reports unsafe physical conditions to the appropriate department for correction. Any potential safety hazards are prioritized and repaired in the order of the most significant safety concerns. Members of the University community are encouraged to report potentially unsafe or hazardous conditions to ULPD at (502) 852-6111.



## Alcohol and Drug Policies

The possession, consumption, manufacture, sale, and/or furnishing of alcoholic beverages and/or drugs is governed by the ULPD and Kentucky Revised Statutes. UofL policies for drug and alcohol use on campus properties and at University sponsored activities prohibit:

- ▶ Distribution, possession and/or use of any illegal drug or controlled substance without authorization.
- ▶ Providing alcoholic beverages to individuals less than 21 years of age, and/or possession of alcoholic beverages by individuals less than 21 years of age.
- ▶ Illegal possession of an open container of an alcoholic beverage, public intoxication, driving while intoxicated and/or drinking alcoholic beverages in an unlicensed place.

Students, faculty, and staff who violate the University’s drug and alcohol policies may face conduct sanctions that could include, suspension or expulsion from the University, as well as prosecution and imprisonment under federal and Kentucky laws. The Code of Student Conduct lists prohibited conduct and conduct sanctions for students. Staff may be disciplined under section 5.01 of the Disciplinary Policy. Deans may discipline faculty per the University’s Red Book Sections 4.5.3 , with review per 4.4 for sanctions less than dismissal or suspension for 1 year. As a requirement of the Federal Drug Free Schools and Communities Amendment Act of 1989, the University of Louisville complies and ensures the distribution and receipt of the University’s policies, sanctions, and resources regarding alcohol and other drug (AOD) use to all employees and students on a yearly basis.

[Drug Free Workplace Policy](#)

## Alcohol and Drug Abuse Education Programs

UofL's Building Resilience In Campus Community (BRICC) Coalition utilizes a public health model endorsed by the National Institutes of Health (NIH) to assist the University community to build resilience through increasing protective factors, implementing prevention strategies that reduce high risk drinking and substance use, and advocating for policy change. BRICC Coalition supports and engages all students: those who do not consume, encourages risk reduction strategies for those who do consume, and provides a supportive campus and community environment for students in recovery.

BRICC Coalition assisted in content development and the passage of the KRS-244 medical amnesty law. The medical amnesty law grants limited immunity for people who choose to call for help in an emergency. BRICC serves as a lead advocate in campus and community trainings, statewide conferences, and provides educational programming and resources as requested through resident halls, classrooms, and student organizations using strategies that are informed by the Alcohol Intervention Matrix (AIM) and Substance Abuse and Mental Health Service Administration (SAMSHA). In addition, BRICC Coalition provides financial and technical support for registered student organization, Advocates for Recovery. For more information, please visit the website at: [BRICC](#).

The UofL Counseling Center provides assessment, referral services, and limited counseling to university students as well as serving as a resource for information on alcohol and other drugs. In Spring 2020, the Counseling Center began to provide therapy and urgent consultation services via telehealth due to the COVID-19 pandemic. Currently, services can be provided in-person or via telehealth, depending on the clinician's assessment of the client's concerns and the client's preference. Groups may be held via telehealth or in-person. For more information about these resources or about individual assistance, call the Counseling Center at (502) 852-6585 or visit [UofL Counseling](#). Services for faculty and staff



***As a requirement of the Federal Drug Free Schools and Communities Amendment Act of 1989, the University of Louisville complies and ensures the distribution and receipt of the University's policies, sanctions, and resources regarding alcohol and other drug (AOD) use to all employees and students on a yearly basis.***

members are available through the Employee Assistance Program (EAP). More information on EAP can be obtained by calling 1-800-865-1044, by visiting <https://louisville.edu/hr/benefits/employee-assistance-program>, or <https://www.anthem.com/employer/employee-benefits-programs/services>.

## Sexual Misconduct, Domestic Violence, Dating Violence, Stalking Response, and Prevention

The University of Louisville is dedicated to fostering a quality educational and working environment in the campus community. The University expects its students, faculty, and staff to treat others with dignity and respect. The University will not tolerate any form of sexual misconduct, domestic or dating violence and/or stalking and will take immediate steps to end, prevent recurrence, and correct any efforts on the complainant or those involved in the complaint process. When an allegation of misconduct is brought to the attention of a University official that a student, faculty, or a staff member violated the Code of Student Conduct or the University Code of Conduct, sanctions will be issued if the individual has been found responsible for the allegations. The preponderance of evidence standard is used to determine a violation of the appropriate policy. A policy violation is not required in order to provide supportive measures to the individual reporting the concern. Possible supportive measures include but are not limited to:

- ▶ “No Contact” orders;
- ▶ Possible changes to academic or living situations as appropriate;
- ▶ Counseling services;
- ▶ Safety transports;
- ▶ Financial services;
- ▶ Transportation;
- ▶ Medical services;
- ▶ Academic support services; and
- ▶ Notification of the right to file a complaint with local law enforcement

## Assistance for Victims: Rights and Options

---

Regardless of whether a complainant elects to pursue a criminal complaint or whether the offense is alleged to have occurred on or off-campus, the University will assist complainants who are recipients of behavior associated with sexual assault, domestic violence, dating violence and/or stalking. Reports of sexual misconduct can be made to:

- ▶ If against a student, Dean of Students Office, (502) 852-5787, or Title IX Office, (502) 852-5787
- ▶ If against an employee, Human Resources, (502) 852-6538 or
- ▶ If against a University visitor, ULPD, (502) 852-7233

Complainants may also report misconduct to any University employee whose role can be reasonably believed to indicate authority or responsibility to act or redress the harassment including, but not limited to, Vice Presidents, Deans, Department Chairs, Directors, staff, and/or any faculty member. Each complainant will be provided with a written explanation of their rights and options. Complainants have the right to (1) notify either police and/or campus authorities, or (2) obtain assistance from campus authorities to notify police or (3) decline to notify the police or campus authorities. Retaliation (including intimidating, coercing or discrimination) against any person in response to reporting is prohibited. Complainants will receive written information about their rights and the institution’s options regarding orders of protection, no contact letters, restraining orders or similar orders issued by a criminal, civil, or tribal court. The University of Louisville will take steps to prevent retaliation, and should it occur, will take strong responsive action.



## Educational Programs, Policies, and Procedures

ULPD maintains close ties with the University of Louisville Prevention, Education, and Advocacy on Campus and in the Community (PEACC). PEACC offers violence prevention programming as well as advocacy support services to the general University community. These educational programs address all forms of power-based person violence, including sexual assault, partner violence, stalking and sexual harassment. . In coordination with partners across campus, PEACC provides training on bystander intervention through a program called Green Dot that teaches individuals how to recognize warning signs of violence, identify barriers to take action, and create realistic solutions for active bystander behaviors. This program is directed at first year students but extends to all students across campus as well as faculty and staff. More information about Green Dot at U of L can be found here: <https://louisville.edu/greendot>. More information about PEACC can be obtained by calling (502) 852-2663 or by going to [PEACC](#).

The Title IX Office provides sexual violence prevention training for new graduate, undergraduate, professional, and transfer students and general Title IX training for new employees as well as secondary education opportunities for campus. All new students are required to complete a module through Vector Solutions that covers consent, healthy relationships, bystander intervention, as well as the realities of sexual assault, dating violence, domestic violence, and more. These modules also provide access to University of Louisville resources. New employees complete training through the new employee orientation program which covers university policy definitions, resources and requirements of mandatory reporters. In addition to these required primary trainings, the Title IX office offers training to various campus groups upon request or need.

### If a Sexual Offense Occurs

If you are the target of behavior associated with sexual assault or sexual misconduct at the University of Louisville, your first priority should be to get to a place of safety immediately. As soon as practical, go to the University of Louisville Hospital for a Sexual Assault Nurse Examiner (SANE) exam, which will include Sexually Transmitted Infection (STI) information, emergency contraception and the opportunity to speak with a police officer. The exam is free of charge and should be made as soon as possible.

You may report sexual violence, sexual assault, sexual harassment to the Office of the Dean of Students, the ULPD or any University employee who provides direct services to students, such as, but not limited to:

- ▶ Vice Presidents
- ▶ Deans
- ▶ Department Chairs
- ▶ Directors
- ▶ Coaches
- ▶ Student group Faculty Advisers; or
- ▶ Any University employee whose roles you reasonably believe indicates an authority or responsibility to act or redress the harassment.

## Notifying Law Enforcement

The ULPD strongly encourages sexual misconduct victims to report the incident in a timely manner by calling 9-1-1 or (502) 852-6111. Time is a critical factor in evidence collection and preservation, even if you are not certain you want to file a report with the police department or the University. Preserving evidence now will give you options should you decide to report it later, which is helpful in prosecution, because it cannot be obtained later. Ideally, a sexual misconduct victim should do the following to preserve any physical evidence:



- ▶ Do not change your clothes, shower, rinse your mouth, douche or use the bathroom
- ▶ Do not wash or destroy clothing or other physical evidence
- ▶ If you must change clothes

place each garment in a separate paper (not plastic) bag

Filing a police report with the ULPD does not obligate the victim to prosecute, nor will it subject the victim to scrutiny or judgment from officers. Filing a police report will:

- ▶ Ensure the victim of a sexual misconduct receives medical treatment and tests at no expense to the victim
- ▶ Provide the opportunity for the collection of evidence
- ▶ Ensure the victim has access to free confidential counseling from counselors specifically trained in the area of sexual misconduct crisis intervention

Information regarding an allegation of sexual violence, sexual assault, sexual harassment and the parties involved is kept as confidential as possible and shared only with those who have a legitimate reason to know.

**Although it is not typical, outside sources may request information contained within a ULPD incident**

**under the public information laws. In these instances, personal identifying information is redacted from the report.**

## Notification of Change in Academic, Working, Living and/or Transportation Situations

Alleged victims may be given the opportunity and assistance to change their academic, working, living, and/or transportation situations. If a student needs assistance with academic, working, living, and/or transportation situations, the student should contact the Dean of Students Office at (502)852-5787. If an employee needs assistance, contact Human Resources at (502) 852-6258.

In cases of alleged sexual misconduct, including domestic violence, dating violence, sexual assault, and/or stalking the institution will notify the complainant of options to avoid contact with the accused and allow the complainant to change academic and extracurricular activities, housing, transportation, dining, and/or work situations as appropriate. The institution will provide victims with information on any available resources, such as victim advocacy, housing assistance, academic support, student financial aid, counseling, visa and immigration services, legal assistance, disability services, health and mental health services, and the right to report a crime to campus or local law enforcement.





## Procedures to Address Misconduct

Students accused of any non-academic misconduct under the Code of Student Conduct and employees under the University Disciplinary Policy 5.01, including but not limited to sexual assault, domestic violence, dating violence, and/or stalking are subject to administrative proceedings during any pending criminal, civil, or other University proceedings regarding the same incident. The standard of proof for incidents of non-academic misconduct is a preponderance of evidence. Preponderance of evidence means that the evidence supports that a given allegation is more likely to be true than not true. If a student is charged with sexual assault, domestic violence, dating violence, and/or stalking and proceeds through the non-academic conduct process, both the respondent and the complainant shall be afforded the hearing procedure rights listed in the Title IX Student Sexual Misconduct Policy, including the same opportunity to have others present during an internal conduct proceeding, including the opportunity to be accompanied to any related meeting by an advisor.

If an employee is accused of sexual harassment, sexual assault, domestic violence, dating violence and/or stalking, both the respondent and the complainant shall be afforded the hearing procedure rights listed in the Title IX Employee Sexual Misconduct Policy including the same opportunity to have others present during an internal

conduct proceeding, including the opportunity to be accompanied to any related meeting by an advisor. The administrative proceedings for a student respondent will be conducted by staff who receive training on issues related to domestic violence, dating violence, sexual assault, and stalking. These staff members are also trained on how to conduct the hearing process. The administrative proceedings for an employee respondent will be conducted by a hearing officer who will make all determinations of relevancy, serve as the decision maker, evaluate the evidence presented, control the tone and tenor of the hearing and make findings of fact and conclusions as to whether sexual misconduct or violations of University policy occurred. The hearing officers for proceedings involving employee respondents are retired judges or experienced attorneys who have contracted with the University to preside over Title IX hearings. The disciplinary procedures will provide prompt, fair, and impartial investigations and resolutions, if appropriate. Upon conclusion of the non-academic misconduct process for a student respondent, a written decision will be made. Both the complainant and respondent(s) will receive simultaneous written notice of (1) the outcome of the disciplinary hearing, (2) the institution's appeal procedures, (3) any change to the results before the results are final, and (4) when the results become final. Upon conclusion of the hearing for an employee respondent, the Hearing Officer shall issue a written

determination simultaneously to both the complainant and respondent notifying them of the outcome of the hearing including a determination regarding responsibility, any disciplinary sanctions the University imposes on the respondent, and the University's procedures and permissible bases for the parties to appeal. Individuals involved in the process may receive information about counseling, health, mental health, victim advocacy, and other services available on and off campus.

### UNIVERSITY POLICIES

[Policy and Procedures Library](#)  
[The Faculty Handbook](#)  
[Code of Student Conduct](#)  
[University Employees Code of Conduct](#)  
[Staff HR Policies](#)

## Sanctions Imposed for Sexual Misconduct Violation and the Results of the Conduct Process

If a student respondent is found responsible for sexual misconduct violation(s), in a non-academic misconduct process, sanctions will be imposed as outlined in the University of Louisville Code of Student Conduct. The complainant will receive notification of the hearing decision in conduct cases

involving sexual misconduct or crimes of violence. The notice will include: the finding(s), sanctions imposed that directly relate to the complainant, and any other steps the institution has taken to eliminate the hostile environment and prevent recurrence.

[Student Sexual Misconduct Policy](#)

If an employee respondent is found responsible for sexual misconduct violation(s) by the Hearing Officer, the University will recommend the appropriate sanctions to the Hearing Officer for inclusion in the written determination of responsibility. Persons found to have violated the provisions set forth in the policy will be subject to disciplinary action and penalties as set forth in the University’s policies and procedures outlined in The Redbook, the Faculty Handbook and the Discipline Policy PER-5.01. These penalties include, but are not limited to, suspension, demotion, and/or termination. No disciplinary action may be taken against an employee until the appeal process is concluded. Any final disciplinary action imposed on the Respondent is subject to the grievance process set forth in The Redbook and the Grievance Policy PER-5.03.

[Title IX Employee Sexual Misconduct Policy](#)  
[Staff Grievance Policy](#)

**Sex Offender Registration Information**

The Campus Sex Crimes Prevention Act (section 1601 of Public Law 106-386) mandates that universities advise the

campus community where law enforcement agency information concerning registered sex offenders can be obtained. The Kentucky State Police provides sex offender and criminal offender registration to the public through their website. The intent of this site is public safety, awareness, and to alert possible victims of potential danger. It is important to note that only criminal offenses covered by statute require registration with the state police.

[KY State Police Sex Offender Registry](#)

The Family Educational Rights and Privacy Act (FERPA) was amended to make it clear that institutions may disclose information received through the state registration and community notification programs, even if the sex offender is a student.

**Missing Student Notification Policy**

The Missing Student Notification Policy is designed to comply with the Higher Education Opportunity Act (HEOA) of 2008 for colleges and universities and its on-campus student residents. A missing person is anyone whose absence is contrary to their usual pattern of behavior, and it is suspected that unusual circumstances may have caused the absence. University Housing and Residence Experience will ask students to provide the missing person’s confidential contact information as part of the student application for living on campus and will only be accessed by authorized campus officials and law enforcement

in the case that the student is considered missing.

Any concern that a student resident is missing should immediately be directed to ULPD at (502) 852-6111. ULPD will serve as the lead in the investigation, working closely with University Housing and Residence Experience. Upon notification from any entity that a residential student may be missing, ULPD will begin an investigation and several resources will be used in locating the student, such as:

- ▶ Identify the missing student’s contact person’s information.
- ▶ Look through the student’s room and residence hall community area.
- ▶ Talk with community residents.
- ▶ Access the student’s class schedule and contact faculty.
- ▶ If the student is a member of an organization that organization will be contacted.
- ▶ Gathering any other information that may help locate the student.

ULPD will notify the missing student’s emergency contact person(s) within twenty-four (24) hours of determination that the student is missing. If the missing student is under eighteen (18) years of age and not emancipated, the University will notify the parents or guardian. The ULPD will also notify appropriate local law enforcement agencies and other entities as necessary regarding the missing student.

## RESOURCES

<b>ON CAMPUS</b>			
<i>Title IX Office</i>	(502) 852-5787	Student Activities Center, W301	<a href="#">Title IX</a>
<i>Belknap Counseling Center</i>	(502) 852-6585	Student Activities Center, W204	<a href="#">Belknap Counseling</a>
<i>Belknap Campus Health Services</i>	(502) 852-6479	215 Central Ave. Suite 110	<a href="#">Belknap Campus Health</a>
<i>HSC Campus Health Services</i>	(502) 852-6446	401 E. Chestnut, Suite 110	<a href="#">HSC Campus Health</a>
<i>HSC Counseling</i>	(502) 852-0996	A Building, Suite 210	<a href="#">HSC Counseling</a>
<i>Dean of Students Office</i>	(502) 852-5787	Student Activities Center, W301	<a href="#">UofL Dean of Students</a>
<i>PEACC</i>	(502) 852-2663	Student Activities Center, W309-H	<a href="#">PEACC</a>
<i>LGBT Centers</i>	(502) 852-0696 (502) 852-5861	Belknap HSC	<a href="#">LGBT Centers</a>
<i>Depression Center</i>	(502) 588-4450	401 E. Chestnut, Suite 610	<a href="#">Depression Center</a>
<b>OFF CAMPUS/COMMUNITY</b>			
<i>UofL Hospital Emergency Room</i>	(502) 562-3000	530 S. Jackson St.	<a href="#">UofL Hospital ER</a>
<i>Emergency Psychiatry at UofL Hospital</i>	(502) 562-3120	530 S. Jackson St.	<a href="#">UofL Hospital/ Psychiatric-Care</a>
<i>Center for Women and Families (24/7)</i>	1-844-237-2231	927 S. 2nd St.	<a href="#">Center for Women and Families</a>
<i>Domestic Violence Intake Center</i>	(502) 595-0853	Jefferson Hall of Justice, 600 W. Jefferson St., first floor, rm 1150	<a href="#">Domestic Violence Intake Center</a>
<i>Suicide &amp; Crisis Lifeline (24/7)</i>	988		<a href="https://988lifeline.org/">https://988lifeline.org/</a>
<i>Trans Lifeline</i>	1-877-565-8860		<a href="#">Trans Lifeline</a>
<i>Trevor Project Lifeline</i>	1-866-488-7386		<a href="#">The Trevor Project, get help now</a> <a href="#">Trevor Space</a>
<i>Centerstone Crisis Center (24/7)</i>	(502) 589-4313		<a href="#">Centerstone Crisis Center</a>
<i>MYKY.INFO</i>		If you need a meal, a bed, a job, or any help.	<a href="#">myky.info</a>

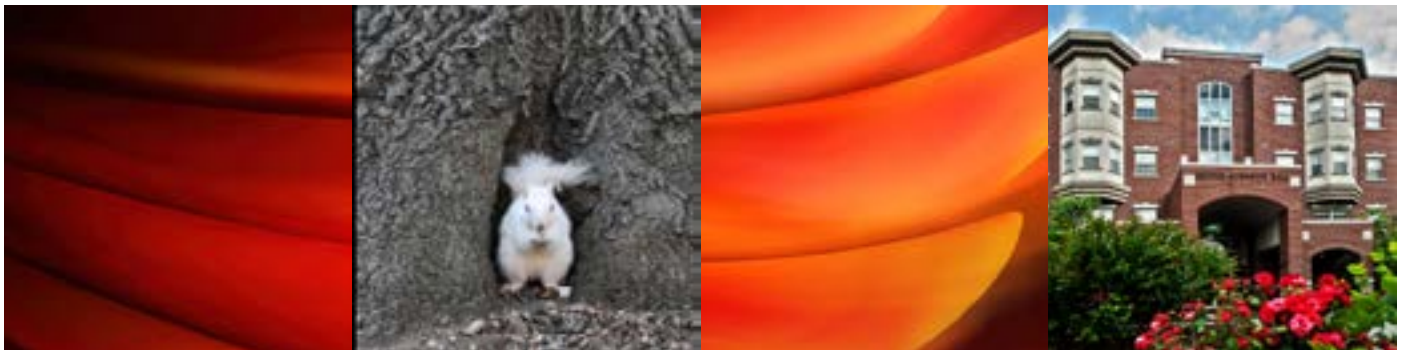


# CRIME STATISTICS

## Crime Statistics Report

ULPD prepares this report to comply with the Federal Jeanne Clery Disclosure of Campus Security Policy and Crime Statistics Act (Clery Act) and the Commonwealth of Kentucky Michael Minger Act. These acts require the University to disclose four general areas of crime statistics involving criminal offenses, hate crimes, VAWA offenses, and arrests and referrals for disciplinary action involving weapons, drugs, and alcohol violations. These statistics were compiled for the years 2022, 2021, and 2020. Crime reported to other law enforcement agencies occurring at non-campus buildings, property and public property adjacent to the campus were also included in the statistics. Annual statistics are also requested from the Dean of Students, Campus Housing, Athletics, and Campus Security Authorities on campus. The statistics are gathered from January 1st through December 31st of each year. The report is distributed by October 1st of each year in the publication of the University of Louisville Annual Security and Fire Safety Report.

[Annual Security and Fire Safety Reports](#)



## Clery Geography Definitions

Statistics concerning crimes reported to the University of Louisville Police Department, local and other law enforcement agencies and campus security authorities are combined. This report complies with 20 USC 1092 (f). The geographic categories and specific crimes as defined by the Clery Act are listed below.

### ON-CAMPUS

Any building or property owned or controlled by an institution within the same reasonably contiguous geographic area and used by the institution in direct support of, or in a manner related to, the institution's educational purposes, including residence halls and any building or property that is within or reasonably contiguous to part one of this definition that is owned by the institution but controlled by another person, is frequently used by students and supports institutional purposes (such as a food or other retail vendor).

### ON-CAMPUS STUDENT HOUSING

#### (Residential Facilities)

Any student housing facility that is owned or controlled by the institution or is located on property that is owned or controlled by the institution and is within the reasonably contiguous geographic area that makes up the campus is considered an on-campus student housing facility. *NOTE: Statistics for University housing are recorded and included in both the on-campus category and the on-campus student housing only category.*

### NON-CAMPUS (includes Affiliated and Off Campus properties)

Any building or property owned or controlled by a student organization that is officially recognized by the institution or any building or property owned or controlled by an institution that is used in direct support of, or in relation to, the institution's educational purposes, is frequently used by students and is not within the same reasonably contiguous geographic area of the institution.

### PUBLIC PROPERTY

All public property, including thoroughfares, streets, sidewalks, and parking facilities, that is within the campus, or immediately adjacent to and accessible from the campus. This consists of the public sidewalk, street, and opposite sidewalk along all borders of the campus.



### UNFOUNDED

If a reported crime is investigated by law enforcement authorities and found to be false or baseless, the crime is unfounded. Only sworn or commissioned law enforcement personnel may unfound a crime. Note that the recovery of stolen property, the low value of stolen property, the prosecution or the failure to make an arrest does not unfound a legitimate offense. Also, the findings of a coroner, court, jury, or prosecutor do not unfound offenses or attempts law enforcement investigations have established.

## Clery Reportable Crime Definitions

---

▶ **Murder and Non-Negligent Manslaughter**

- The willful, non-negligent, killing of one human being by another

▶ **Manslaughter by Negligence**

- The killing of another person through gross negligence

▶ **Sex Offense**

- Any sexual act, to include forcible rape, forcible sodomy and sexual assault with an object, directed against another person without the consent of the victim, including instances where the victim is incapable of giving consent

▶ **Rape**

- The penetration, no matter how slight of the vagina or anus with any body part, to include sodomy and sexual assault with an object

▶ **Fondling**

- The touching of the private parts of another person for the purpose of sexual gratification, without the consent of the victim, including instances where the victim is incapable of giving consent because of their age or because of his/her temporary or permanent mental incapacity

▶ **Incest**

- Non- forcible sexual intercourse between persons who are related to each other within the degrees wherein marriage is prohibited by law

▶ **Statutory Rape**

- Non-forcible sexual intercourse with a person who is under the statutory age of consent

▶ **Robbery**

- The taking or attempting to take anything of value from the care, custody or control of a person or persons by force or threat of force or violence and/or by putting the victim in fear

▶ **Aggravated Assault**

- An unlawful attack by one person upon another for the purpose of inflicting severe or aggravated bodily injury (This type

of assault usually is accompanied using a weapon or by means likely to produce death or great bodily harm.)

▶ **Burglary**

- The unlawful entry of a structure to commit a felony or a theft

▶ **Motor Vehicle Theft**

- The theft or attempted theft of a motor vehicle (Motor vehicle theft is when an automobile is taken by a person not having lawful access, even if the vehicle is later abandoned, including joy riding.)

▶ **Arson**

- Any willful or malicious burning or attempt to burn, with or without intent to defraud, a dwelling, house, public building, motor vehicle, aircraft or personal property of another

▶ **Hate Crimes**

- A criminal offense committed against a person or property which is motivated, in whole or in part, by the offender's bias (Bias is a prejudiced viewpoint of a group of persons based on their race, gender, religion, disability, sexual orientation, sexual identity and/or ethnic/national origin.)

*The below crimes are only reported if they are motivated by bias:*

▶ **Larceny/Theft**

- The unlawful taking, carrying, leading, or riding away of property from the possession or constructive possession of another

▶ **Simple Assault**

- An unlawful physical attack by one person upon another where neither the offender displays a weapon, nor the victim suffers obvious severe or aggravated bodily injury involving apparent broken bones, loss of teeth, possible internal injury, severe laceration or loss of consciousness

▶ **Intimidation**

- To unlawfully place another person in reasonable fear of bodily harm using

## Clery Reportable Crime Definitions *(continued)*

threatening words and/or conduct, but without displaying a weapon or subjecting the victim to actual physical attack

### ▶ **Vandalism**

- To willfully or maliciously destroy, injure, disfigure, or deface any public or private property, real or personal, without the consent of the owner or person having custody or control by cutting, tearing, breaking, marking, painting, drawing, covering with filth, or any other such means as may be specified by local law

### *Other Clery Act Reportable Offenses:*

#### ▶ **Weapons Law Violations**

- The violation of laws or ordinances prohibiting the manufacture, sale, purchase, transportation, possession, concealment or use of firearms, cutting instruments, explosives, incendiary devices, or other deadly weapons

#### ▶ **Drug Law Violations**

- Violations of state and local laws relating to the unlawful possession, sale, use, growing, manufacturing and making of narcotic drugs. These substances include: opium or cocaine and their derivatives (morphine, heroin, codeine); marijuana, synthetic narcotics (Demerol, methadone); and dangerous non-narcotic drugs (barbiturate, Benzedrine).

#### ▶ **Liquor Law Violations**

- The violation of state and/or local ordinances prohibiting the manufacture, sale, transport, furnishing, possessing or intoxicating liquor; maintaining unlawful drinking spaces; bootlegging and operating a still; furnishing liquor to a minor or intemperate person; underage possession; using a vehicle for illegal transportation of liquor; drinking on train or public conveyance and all attempts to commit any of the above. (Drunkenness and driving under the influence are not included in this definition.)

### *Violence Against Women Act (VAWA)/Campus SaVE Act Reportable Offenses:*

#### **Sexual Abuse 1st Degree**

1. A person is guilty of sexual abuse in the first degree when:
  - a. He or she subjects another person to sexual contact by forcible compulsion; or
  - b. He or she subjects another person to sexual contact who is incapable of consent because he or she:
2. is physically helpless;
3. is less than twelve (12) years old; or
4. Is mentally incapacitated; or
  - a. Being twenty-one (21) years old or more, he or she:
5. Subjects another person who is less than sixteen (16) years old to sexual contact;
6. Engages in masturbation in the presence of another person who is less than sixteen (16) years old and knows or has reason to know the other person is present; or
7. Engages in masturbation while using the internet, telephone or other electronic communication device while communicating with a minor who the person knows is less than sixteen (16) years old and the minor can see or hear the person masturbate; or
  - a. Being a person in a position of authority or position of special trust, as defined in KRS 532.045, he or she, regardless of his or her age, subjects a minor who is less than eighteen (18) years old, with whom he or she comes into contact as a result of that position, to sexual contact or engages in masturbation in the presence of the minor and knows or has reason to know the minor is present or engages in masturbation while using the internet, telephone or other electronic communication device while communicating with a minor who the person knows is less than sixteen (16) years old and the minor can see or hear the person masturbate.

## Clery Reportable Crime Definitions *(continued)*

8. Sexual abuse in the first degree is a Class D felony, unless the victim is less than twelve (12) years old in which case the offense shall be a Class C felony.

### Sexual Abuse 2nd Degree

1. A person is guilty of sexual abuse in the second degree when:
  - a. He/she subjects another person to sexual contact who is incapable of consent because he or she is an individual with an intellectual disability;
  - b. He/she is at least eighteen (18) years old but less than twenty-one (21) years old and subjects another person who is less than sixteen (16) years old to sexual contact; or
  - c. Being a jailer, or an employee, contractor, vendor or volunteer of the Department of Corrections, Department of Juvenile Justice or a detention facility as defined in KRS 520.010, or of an entity under contract with either department or a detention facility for the custody, supervision, evaluation or treatment of offenders, he or she subjects a person who is at least eighteen (18) years old and who he or she knows is incarcerated, supervised, evaluated or treated by the Department of Corrections, Department of Juvenile Justice, detention facility, or contracting entity to sexual contact.
2. In any prosecution under subsection (1)(b) of this section, it is a defense that:
  - a. The other person's lack of consent was due solely to incapacity to consent by reason of being less than sixteen (16) years old; and
  - b. The other person was at least fourteen (14) years old; and c. The actor was less than five (5) years older than the other person.
3. Sexual abuse in the second degree is a Class A misdemeanor.

### Sexual Abuse 3rd Degree

1. A person is guilty of sexual abuse in the third degree when he or she subjects another person to sexual contact without the latter's consent.
2. In any prosecution under this section, it is a defense that:
  - a. The other person's lack of consent was due solely to incapacity to consent by reason of being less than sixteen (16) years old; and
  - b. The actor was less than eighteen (18) years old.
3. Sexual abuse in the third degree is a Class B misdemeanor.

### Lack of Consent

1. Whether specifically stated, it is an element of every offense defined in this chapter that the sexual act was committed without consent of the victim.
2. Lack of consent results from:
  - a. Forcible compulsion;
  - b. Incapacity to consent; or
  - c. If the offense charged is sexual abuse, any circumstances in addition to forcible compulsion or incapacity to consent in which the victim does not expressly or impliedly acquiesce in the actor's conduct.
3. A person is deemed incapable of consent when he or she is:
  - a. Less than sixteen (16) years old;
  - b. An individual with an intellectual disability or an individual that suffers from a mental illness;
  - c. Mentally incapacitated;
  - d. Physically helpless;
  - e. Under the care or custody of a state or local agency pursuant to a court order and the actor is employed by or working on behalf of the state or local agency.
4. The provisions of subsection (3)(e) of this section shall not apply to persons who are lawfully married to each other and no court is in effect prohibiting contact between the parties.



## Clery Reportable Crime Definitions *(continued)*

### Domestic Violence

1. "Domestic violence and abuse" means physical injury, serious physical injury, sexual abuse, assault or the infliction of fear of imminent physical injury, serious physical injury, sexual abuse or assault between family members or members of an unmarried couple;
2. "Family member" means a spouse, including a former spouse, a grandparent, a parent, a child, a stepchild, or any other person living in the same household as a child if the child is the alleged victim;
3. "Global positioning monitoring system" means a system that electronically determines a person's location through global positioning satellite technology, radio frequency technology or a combination thereof and reports the location of an individual through the use of a transmitter or similar device worn by the individual and that transmits latitude and longitude data to a monitoring entity. The term does not include any system that contains or operates global positioning system technology or any other similar technology that is implanted or otherwise invades or violates the individual's body; and
4. "Member of an unmarried couple" means each member of an unmarried couple which allegedly has a child in common, any children of the couple or a member of an unmarried couple who are living together or have formerly lived together.

### Dating Violence

- Violence committed by a person who is or has been in a social relationship of a romantic nature with the victim:

1. The existence of such a relationship shall be based on the reporting party's statement and with consideration of the length of the relationship, the type of relationship and the frequency of interaction between the persons involved in the relationship.
2. For the purposes of this definition. Dating violence includes, but is not limited to, sexual

or physical abuse or the threat of such abuse. Dating violence does not include acts covered under the definition of domestic violence.

### Stalking 1st Degree (Felony)

- A person is guilty of stalking:

1. When he intentionally:
  - a. Stalks another person; and
  - b. Makes an explicit or implicit threat with the intent to place that person in reasonable fear of:
    - i. Sexual contact as defined in KRS 510.010;
    - ii. Serious physical injury; or
    - iii. Death; and
2. A protective order has been issued by the court to protect the same victim or victim's and the defendant has been served with the summons or order or has been given actual notice; or
3. A criminal complaint is currently pending with a court, law enforcement agency or prosecutor by the same victim or victims and the defendant has been served with a summons or warrant or has been given actual notice; or
4. The defendant has been convicted or pled guilty within the previous five (5) years to a felony or to a Class A misdemeanor against the same victim or victims; or
5. The act or acts were committed while the defendant had a deadly weapon on or about their person

### Stalking 2nd Degree (Misdemeanor)

- A person is guilty of stalking when they intentionally:

1. Stalk another person; and
2. Make an explicit or implicit threat with the intent to place that person in reasonable fear of:
  - a. Sexual contact as defined. In KRS 510.010;
  - b. Physical injury; or
  - c. Death

## Clery Crime Statistics

*There were no reported hate crimes at any of the three University campuses for the years 2020, 2021, or 2022.*

### Belknap Campus Crime Statistics\* 2022, 2021, 2020

Offense	Year	On-Campus	On-Campus Student Housing	Non-Campus Property	Public Property	Unfounded Crimes
Murder / Non-Negligent Manslaughter	2022	0	0	0	0	0
	2021	0	0	0	0	0
	2020	0	0	0	0	0
Manslaughter by Negligence	2022	0	0	0	0	0
	2021	0	0	0	0	0
	2020	0	0	0	0	0
Sex Offenses:						
Rape	2022	5	5	1	0	0
	2021	3	3	5	0	0
	2020	3	3	3	0	0
Fondling	2022	8	5	0	0	0
	2021	5	5	2	0	0
	2020	1	0	1	0	0
Incest	2022	0	0	0	0	0
	2021	0	0	0	0	0
	2020	0	0	0	0	0
Statutory Rape	2022	0	0	0	0	0
	2021	0	0	0	0	0
	2020	0	0	0	0	0
Robbery	2022	2	1	4	0	0
	2021	1	1	6	1	0
	2020	3	1	4	4	0
Aggravated Assault	2022	1	0	0	0	0
	2021	0	0	0	1	0
	2020	3	1	1	2	0
Burglary	2022	10	4	12	0	0
	2021	11	3	13	0	0
	2020	11	2	8	0	0
Motor Vehicle Theft	2022	9	0	13	3	1
	2021	8	0	8	6	0
	2020	12	0	16	10	0
Arson	2022	0	0	0	0	0
	2021	1	0	0	0	0
	2020	3	1	0	0	0

## Belknap Campus Crime Statistics\* (continued) 2022, 2021, 2020

Offense	Year	On-Campus	On-Campus Student Housing	Non-Campus Property	Public Property	Unfounded Crimes
Violence Against Women Act (VAWA) Crimes:						
Domestic Violence	2022	2	1	8	1	0
	2021	5	2	12	2	0
	2020	8	5	13	2	0
Dating Violence	2022	6	4	10	1	0
	2021	3	3	7	0	0
	2020	1	0	3	0	0
Stalking	2022	19	4	0	0	0
	2021	1	1	0	0	0
	2020	2	0	0	0	0
Arrests:						
Weapons: Carrying, Possessing, etc...	2022	0	0	0	2	0
	2021	0	0	0	5	0
	2020	1	0	0	3	0
Drug Abuse Violations	2022	9	3	2	23	0
	2021	7	1	2	28	0
	2020	11	5	4	34	0
Liquor Law Violations	2022	1	0	0	1	0
	2021	0	0	3	0	0
	2020	1	1	0	0	0
Disciplinary Referrals:						
	2022	0	0	0	0	0
Weapons: Carrying, Possessing, etc...	2021	0	0	1	0	0
	2020	0	0	0	0	0
Drug Abuse Violations	2022	21	21	0	0	0
	2021	12	12	0	0	0
	2020	62	62	0	0	0
Liquor Law Violations	2022	47	45	0	0	0
	2021	53	51	0	0	0
	2020	56	55	1	0	0

\* Note: Statistics for university housing are recorded and included in both the on-campus category and the on-campus student housing only category.

## Health Sciences Center Campus Statistics\* 2022, 2021, 2020

Offense	Year	On-Campus	On-Campus Student Housing	Non-Campus Property	Public Property	Unfounded Crimes
Murder / Non-Negligent Manslaughter	2022	0	0	0	0	0
	2021	0	0	0	0	0
	2020	0	0	0	0	0
Manslaughter by Negligence	2022	0	0	0	0	0
	2021	0	0	0	0	0
	2020	0	0	0	0	0
Sex Offenses:						
Rape	2022	0	0	1	0	0
	2021	0	0	0	0	0
	2020	0	0	0	0	0
Fondling	2022	4	0	2	0	0
	2021	0	0	0	0	0
	2020	0	0	0	1	0
Incest	2022	0	0	0	0	0
	2021	0	0	0	0	0
	2020	0	0	0	0	0
Statutory Rape	2022	0	0	0	0	0
	2021	0	0	0	0	0
	2020	0	0	0	0	0
Robbery	2022	0	0	0	3	0
	2021	1	0	0	1	0
	2020	0	0	0	2	0
Aggravated Assault	2022	5	0	0	5	0
	2021	0	0	0	0	0
	2020	0	0	0	1	0
Burglary	2022	2	0	0	0	0
	2021	1	0	0	0	0
	2020	1	0	0	0	0
Motor Vehicle Theft	2022	4	0	0	8	0
	2021	1	0	0	5	0
	2020	0	0	0	3	0
Arson	2022	2	0	0	1	0
	2021	0	0	0	0	0
	2020	1	0	0	0	0

**Health Sciences Center Campus Statistics\* (continued)  
2022, 2021, 2020**

Offense	Year	On-Campus	On-Campus Student Housing	Non-Campus Property	Public Property	Unfounded Crimes
<b>Violence Against Women Act (VAWA) Crimes:</b>						
Domestic Violence	2022	5	0	1	1	0
	2021	0	0	0	0	0
	2020	0	0	0	2	0
Dating Violence	2022	1	0	0	1	0
	2021	0	0	0	0	0
	2020	0	0	0	0	0
Stalking	2022	7	0	0	0	0
	2021	0	0	0	0	0
	2020	0	0	0	0	0
<b>Arrests:</b>						
Weapons: Carrying, Possessing, etc...	2022	3	0	0	0	0
	2021	0	0	0	0	0
	2020	0	0	0	0	0
Drug Abuse Violations	2022	4	0	0	2	0
	2021	0	0	0	2	0
	2020	1	0	0	1	0
Liquor Law Violations	2022	0	0	0	0	0
	2021	0	0	0	0	0
	2020	0	0	0	0	0
<b>Disciplinary Referrals:</b>						
Weapons: Carrying, Possessing, etc...	2022	0	0	0	0	0
	2021	0	0	0	0	0
	2020	0	0	0	0	0
Drug Abuse Violations	2022	0	0	0	0	0
	2021	0	0	0	0	0
	2020	0	0	0	0	0
Liquor Law Violations	2022	0	0	0	0	0
	2021	0	0	0	0	0
	2020	0	0	0	0	0

\* Note: Our campus geography expanded with the University’s partnership to Norton Healthcare and UofL Health. Not all buildings are provided police services by ULPD, but Clery reportable crime statistics are requested from other agencies then included in the appropriate campus category.

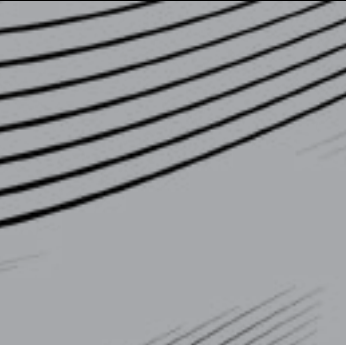
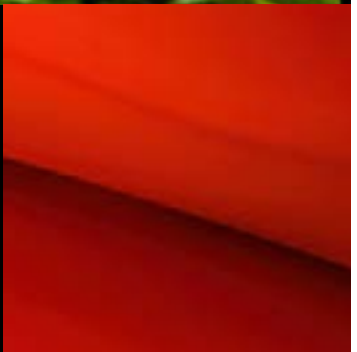
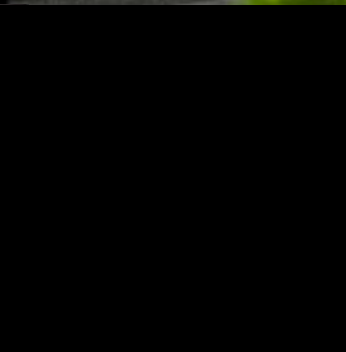
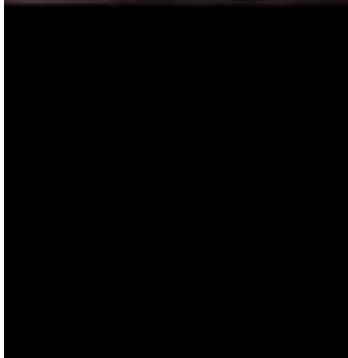
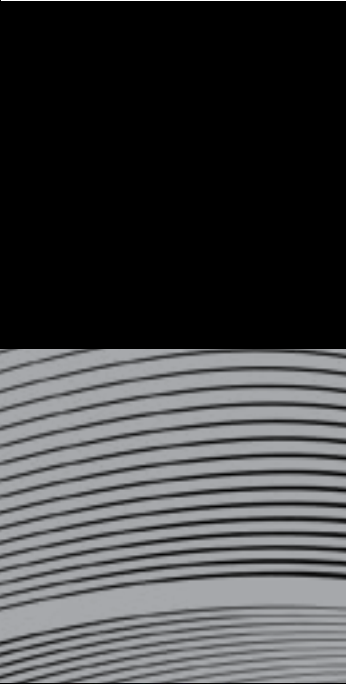
## ShelbyHurst Campus Statistics\*\* 2022, 2021, 2020

Offense	Year	On-Campus	Non-Campus Property	Public Property	Unfounded Crimes
Murder / Non-Negligent Manslaughter	2022	0	0	0	0
	2021	0	0	0	0
	2020	0	0	0	0
Manslaughter by Negligence	2022	0	0	0	0
	2021	0	0	0	0
	2020	0	0	0	0
Sex Offenses:					
Rape	2022	0	0	0	0
	2021	0	0	0	0
	2020	0	0	0	0
Fondling	2022	0	0	0	0
	2021	0	0	0	0
	2020	0	0	0	0
Incest	2022	0	0	0	0
	2021	0	0	0	0
	2020	0	0	0	0
Statutory Rape	2022	0	0	0	0
	2021	0	0	0	0
	2020	0	0	0	0
Robbery	2022	0	0	0	0
	2021	0	0	0	0
	2020	0	0	0	0
Aggravated Assault	2022	0	0	0	0
	2021	0	0	0	0
	2020	0	0	0	0
Burglary	2022	0	0	0	0
	2021	0	0	0	0
	2020	0	0	0	0
Motor Vehicle Theft	2022	0	0	0	0
	2021	0	0	0	0
	2020	0	0	0	0
Arson	2022	0	0	0	0
	2021	0	0	0	0
	2020	0	0	0	0

**ShelbyHurst Campus Statistics\*\* (continued)  
2022, 2021, 2020**

Offense	Year	On-Campus	Non-Campus Property	Public Property	Unfounded Crimes
Violence Against Women Act (VAWA) Crimes:					
Domestic Violence	2022	0	0	0	0
	2021	0	0	0	0
	2020	0	0	0	0
Dating Violence	2022	0	0	0	0
	2021	0	0	0	0
	2020	0	0	0	0
Stalking	2022	0	0	0	0
	2021	0	0	0	0
	2020	0	0	0	0
Arrests:					
Weapons: Carrying, Possessing, etc...	2022	0	0	0	0
	2021	0	0	0	0
	2020	0	0	0	0
Drug Abuse Violations	2022	0	0	0	0
	2021	0	0	0	0
	2020	0	0	0	0
Liquor Law Violations	2022	0	0	0	0
	2021	0	0	0	0
	2020	0	0	0	0
Disciplinary Referrals:					
Weapons: Carrying, Possessing, etc...	2022	0	0	0	0
	2021	0	0	0	0
	2020	0	0	0	0
Drug Abuse Violations	2022	0	0	0	0
	2021	0	0	0	0
	2020	0	0	0	0
Liquor Law Violations	2022	0	0	0	0
	2021	0	0	0	0
	2020	0	0	0	0

\* Note: There are no on-campus student housing on the ShelbyHurst Campus.





# 2023 ANNUAL FIRE SAFETY REPORT



## MESSAGE FROM THE FIRE MARSHAL

It is my pleasure to provide you with information regarding fire safety and compliance here at the University of Louisville. Please feel free to reach out to me if you have any questions or concerns regarding fire safety and compliance in any of our facilities, training and educational opportunities or just general safety questions. Whether it is here on our campuses or elsewhere, #SAFETY IS OUR CARDINAL RULE!

Sincerely,  
 Michael A. Long  
 Fire Marshal/Fire Safety &  
 Compliance Manager  
 502-852-FIRE (3473)  
[michael.long.1@louisville.edu](mailto:michael.long.1@louisville.edu)



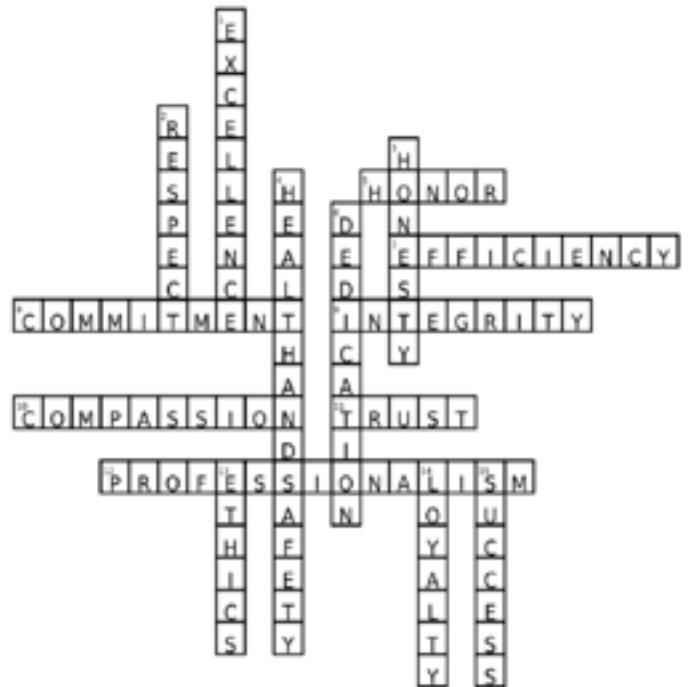
### Mission Statement

The mission of the University of Louisville Fire Marshal's Office is to provide our students, faculty, staff, and guests with safe campuses and facilities conducive to a healthy learning and working environment by delivering high quality Fire Suppression, Life Safety and Fire Prevention programs. These will be accomplished by intense training, rapid response and hazard mitigation, thorough planning and preparation, quality inspections and enforcement of all applicable codes and standards and providing quality fire and life safety education.

### Vision

Our mission will be accomplished by partnering with Emergency Management, University Police, Physical Security, Department of Environmental Health & Safety and Physical Plant to ensure the highest quality of service is provided and all departments are held to the highest standard of excellence.

### Core Values



## FIRE SAFETY

Fires on college and university campuses can claim lives and cause an extensive amount of property damage. Knowledge is key in fire prevention and safety. The University of Louisville provides fire training and education programs. Knowing building designs and escape plans help to prepare for emergency situations. Maintenance and upgrades on all fire alarm systems are a must to ensure the utmost protection. During any renovation, fire safety is evaluated and reconfigured, if needed, to meet current safety requirements. All new construction shall comply with the Commonwealth of Kentucky Building Code. All sprinkler and alarm systems are tested and certified initially and annually per National Fire Protection Association requirements. All UofL properties with an automatic fire alarm system are electronically monitored by our Department of Public Safety Telecommunications Center. This center is staffed 24-hours a day, 7-days a week. The University of Louisville maintains an annual report of all fire related incidents involving on campus residence facilities, as well as

**IF YOU SMELL SMOKE OR DETECT A FIRE OF ANY TYPE,**

**activate the fire alarm system (if applicable) and call 9-1-1 from a safe place.**

**IF YOU SEE EVIDENCE OF AN EXTINGUISHED FIRE,**

**please contact the University Fire Marshal at (502)852-3473,**

**or the University of Louisville Police at (502)852-6111,**

**and the University Housing Director (if within a residence facility) at (502)852-6636.**

reports for any type of fire-related incident that occurs in or around our campuses. These reports include the cause, approximate costs, and any injuries, and/or fatalities as a result of each incident.

### Fire Safety Education and Training Programs

Fire safety training and education is available to all students, faculty, and staff. This training can be requested via the fire safety website at [Fire Safety](#) or by contacting the office of the University Fire Marshal at (502) 852-3473. Training is also provided to individuals who are found in violation of the university policies and standards of conduct relating to fire safety issues such as smoking, unapproved cooking devices, burning candles or incense, tampering with fire safety equipment, etc. Hall Directors and Resident Assistants receive training in the proper use of a fire extinguisher.



### On-Campus Student Housing Policies

Housing policies and codes are designed to give a clear understanding of what is expected of you as a University of Louisville resident. Although policies and procedures may appear and “feel” restrictive, there is no intent to deprive students of an opportunity to make independent decisions. Policies have been established in accordance with other University regulations, local, state, and federal laws. The policies set in place have proven to be in the best interest of the on-campus community at large. With these ideas in mind, University Housing has established a number of guidelines that are intended to give you and your neighbors standards by which you can live and learn together. Residents and prospective residents are strongly encouraged to check with staff members ahead of time regarding any questions, perceived exceptions, or interpretations they might have concerning these rules.

#### DO's

- ▶ **Evacuations are mandatory** when you hear a fire alarm.
- ▶ Ensure **small microwaves and small refrigerators** are plugged directly into an outlet and do not pose safety risk or over utilize building utilities.

#### DON'Ts

- ▶ Toasters, toaster ovens, crock pots, coffee pots, hot plates, indoor/outdoor grills, and any other appliance that contains a heating element are **not permitted** in residence rooms, balconies, or halls.
- ▶ Candles or any open flame device, sparklers, fireworks, combustible figurines, halogen lamps, incense, and other like items are **not permitted** in University buildings, porches or balconies.
- ▶ Hanging objects from sprinkler heads, piping, and electrical conduit is **not permitted**

#### [Residence Hall Policies](#)

## OPERATING YOUR FIRE EXTINGUISHER



### **PULL THE PIN**



### **AIM AT THE BASE OF THE FIRE**



### **SQUEEZE THE LEVER**



### **SWEEP FROM SIDE TO SIDE**

#### IN ADDITION

- ▶ Test Extinguisher prior to approaching fire.
- ▶ Keep Low & Approach with wind at your back
- ▶ Back away watching for rekindle

**Fire evacuation drills** are conducted at least twice during the school year. The fire alarm system is activated prompting an evacuation. These drills are monitored for compliance and verification of all personnel evacuated to the designated meeting place or rally point. **A list of ADA or injured persons who may require assistance evacuating the building is posted inside the main fire alarm panel.** If these occupants cannot evacuate on their own, they shall assemble in a predetermined safe-haven until emergency personnel can evacuate them from the facility. Resident Assistants are trained in evacuation procedures.

### Fire Emergency Procedures

When an emergency requires the **evacuation** of a University facility, occupants shall follow procedures to ensure their safety. The sounding of the fire alarm indicates a **mandatory** evacuation of the facility for all students, faculty, staff, and visitors. While evacuating the facility, try to assist others, but do not compromise your personal safety.

When approaching a closed door, **feel the door knob** with the back of your hand checking for heat. A closed door can separate you from a tremendous amount of heat, smoke, and fire. If the door feels cool to the touch, slowly crack the door open. If you are met with heavy smoke or heat, immediately close the door and look for a second means of escape. **Always know two ways out of any facility.** Remember, **DO NOT USE THE ELEVATORS!** Once you have safely evacuated the facility, **do not re-enter** for any reason until the all-clear is given.

If you become **trapped in a room, keep the door closed** and call 9-1-1 and/or University of Louisville Department of Public Safety Telecommunications at (502) 852-6111. **Give as much information as possible** including your name, address, building name, floor, room number, and exact location. Smoke and heat will rise so **stay close to the floor.** **Do not hide** in a closet, under a bed, or get in the shower with the water running. Hiding will not help and only slow the rescue efforts. Try to **stay at a window** and wave a sheet or clothing to attract attention. This will assist the fire department in making a quick rescue attempt. Breaking the glass may result in smoke from other areas being allowed to enter your room. Do not jump unless absolutely necessary.



If your clothes catch on fire, remember to **STOP, DROP, and ROLL.** Do not try to run as this will only increase the size of the fire. Remember to cover your face to prevent the flames from burning your eyes and being inhaled into your lungs and throat.



**If you are burned,** use cool tap water for 20 minutes to cool the area. Do not apply ice. You can wrap the area with a clean dry dressing. Contact 9-1-1 if you need medical attention. Contact

University of Louisville Department of Public Safety Telecommunications at (502) 852-6111 so a report can be made, and the situation evaluated.

## BEING PREPARED...



**In 2012, a lightning strike caused The Province fire. With proper alarm and sprinkler systems, training and preparedness, there were no injuries.**



**In 2019, unattended cooking caused a fire at The Scholar House. Due to proper evacuation and a sprinkler system, there was minimal damage and no injuries.**

## On-Campus Student Residence Fire Safety Systems and Statistics

Name of Residence Hall	Fire Sprinkler Protection	Detection Type	Audio/Visual Type	System Monitored By	Fire Extinguisher Devices	Evacuation Plans & Placards	Fire Drills	Fire Safety Inspections
Belknap Village North 2015 Lyon St. Walk	Full	Smoke/Heat	Horn/Strobe	UL Police	Yes	Yes	Bi-Annual	Tri-Annually
Belknap Village South 121 E. Centennial Walk	Full	Smoke/Heat	Horn/Strobe	UL Police	Yes	Yes	Bi-Annual	Tri-Annually
Beta Theta Pi Sorority 2038 Unity Place	Full	Smoke/Heat	Horn/Strobe	UL Police	Yes	Yes	Bi-Annual	Tri-Annually
Bettie Johnson Hall 401 W. Cardinal Bl.	Full	Smoke/Heat	Horn/Strobe	UL Police	Yes	Yes	Bi-Annual	Tri-Annually
Billy Minardi Hall 2040 S. Fourth St.	Full	Smoke/Heat	Horn/Strobe	UL Police	Yes	Yes	Bi-Annual	Tri-Annually
Cardinal Towne 1830 S. Third St.	Full	Smoke/Heat	Horn/Strobe	UL Police	Yes	Yes	Bi-Annual	Tri-Annually
Chi Omega Sorority 2018 Unity Place	Full	Smoke/Heat	Horn/Strobe	UL Police	Yes	Yes	Bi-Annual	Tri-Annually
Community Park 2033 S. Fourth St.	Full	Smoke/Heat	Horn/Strobe	UL Police	Yes	Yes	Bi-Annual	Tri-Annually
Delta Zeta Sorority 2104 Unity Place	Full	Smoke/Heat	Horn/Strobe	UL Police	Yes	Yes	Bi-Annual	Tri-Annually
Denny Crum Hall 2403 S. Floyd St.	Full	Smoke/Heat	Horn/Strobe	UL Police	Yes	Yes	Bi-Annual	Tri-Annually
Kurz Hall 1900 S. Fourth St.	Full	Smoke/Heat	Horn/Strobe	UL Police	Yes	Yes	Bi-Annual	Tri-Annually
Lambda Chi Alpha Fraternity 2100 Unity Place	Full	Smoke/Heat	Horn/Strobe	UL Police	Yes	Yes	Bi-Annual	Tri-Annually
Louisville Hall 318 W. Brandeis St.	Full	Smoke/Heat	Horn/Strobe	UL Police	Yes	Yes	Bi-Annual	Tri-Annually
Phi Kappa Tau Fraternity 2106 Unity Place	Full	Smoke/Heat	Horn/Strobe	UL Police	Yes	Yes	Bi-Annual	Tri-Annually
Sigma Phi Epsilon Sorority 2034 Unity Place	Full	Smoke/Heat	Horn/Strobe	UL Police	Yes	Yes	Bi-Annual	Tri-Annually
Triangle Fraternity 2022 Unity Place	Full	Smoke/Heat	Horn/Strobe	UL Police	Yes	Yes	Bi-Annual	Tri-Annually
Unitas Tower 108 E. Cardinal Bl.	Full	Smoke/Heat	Horn/Strobe	UL Police	Yes	Yes	Bi-Annual	Tri-Annually
University Tower Apts 2000 Unity Place	Full	Smoke/Heat	Horn/Strobe	UL Police	Yes	Yes	Bi-Annual	Tri-Annually
University Pointe 2108 Unity Place	Full	Smoke/Heat	Horn/Strobe	UL Police	Yes	Yes	Bi-Annual	Tri-Annually

## 2022 Annual On-Campus Student Residence Fire Statistics

Resident Hall	Total Fires	Fire Report Number	Cause of Fire	Number of Fire Injuries	Number of Fire Deaths	Property Damage Values
Belknap Village North 2015 Lyon Street Walk	0	N/A	N/A	0	0	\$0
Belknap Village South 121 E. Centennial Walk	0	N/A	N/A	0	0	\$0
Beta Theta Pi Sorority 2038 Unity Place	0	N/A	N/A	0	0	\$0
Bettie Johnson Hall 401 W. Cardinal Blvd.	0	N/A	N/A	0	0	\$0
Billy Minardi Hall 2040 S. Fourth St.	0	N/A	N/A	0	0	\$0
Cardinal Towne 1830 S. Third St	0	N/A	N/A	0	0	\$0
Chi Omega Sorority 2018 Unity Place	0	N/A	N/A	0	0	\$0
Community Park 20330S. Fourth St.	0	N/A	N/A	0 0	0 0	\$0
Delta Zeta Sorority 2104 Unity Place	0	N/A	N/A	0	0	\$0
Denny Crum Hall 2403 S. Floyd St.	0	N/A	N/A	0	0	\$0
Kurz Hall 1900 S. Fourth St.	0	N/A	N/A	0	0	\$0
Lambda Chi Alpha Fraternity 2100 Unity Place	0	N/A	N/A	0	0	\$0
Louisville Hall 318 W. Brandeis St.	1	R22000876	Oil Fryer at Twisted Taco Restaurant in Dorm	0	0	\$0
Phi Kappa Tau Fraternity 2106 Unity Place	0	N/A	N/A	0	0	\$0
Sigma Phi Epsilon Sorority 2034 Unity Place	0	N/A	N/A	0	0	\$0
Triangle Fraternity 2022 Unity Place	0	N/A	N/A	0	0	\$0
Unitas Tower 108 E. Cardinal Blvd.	1	R22000855	Electrical Fire/ HVAC Motor	0	0	\$250
University Tower Apts. 2000 Unity Place	0	N/A	N/A	0	0	\$0
University Pointe 2108 Unity Place	0	N/A	N/A	0	0	\$0

## 2021 Annual On-Campus Student Residence Fire Statistics

Resident Hall	Total Fires	Fire Report Number	Cause of Fire	Number of Fire Injuries	Number of Fire Deaths	Property Damage Values
Belknap Residence Hall Phased 1 2015 Lyon St. Walk	0	0	N/A	0	0	\$0
Beta Theta Pi Sorority 2038 Unity Place	0	0	N/A	0	0	\$0
Bettie Johnson Hall 401 W. Cardinal Blvd.	1	R21000721	Stove Fire	0	0	\$50
Billy Minardi Hall 2040 S. Fourth St.	0	0	N/A	0	0	\$0
Cardinal Towne 1830 S. Third St	0	0	N/A	0	0	\$0
Chi Omega Sorority 2018 Unity Place	0	0	N/A	0	0	\$0
Community Park 20330S. Fourth St.	0	0	N/A	0	0	\$0
Delta Zeta Sorority 2104 Unity Place	0	0	N/A	0	0	\$0
Kurz Hall 1900 S. Fourth St.	0	N/A	N/A	0	0	\$0
Lambda Chi Alpha Fraternity 2100 Unity Place	0	N/A	N/A	0	0	\$0
Louisville Hall 318 W. Brandeis St.	0	0	N/A	0	0	\$0
Miller Hall 2001 S. First St.	0	N/A	N/A	0	0	\$0
Phi Kappa Tau Fraternity 2106 Unity Place	0	N/A	N/A	0	0	\$0
Sigma Phi Epsilon Sorority 2034 Unity Place	0	N/A	N/A	0	0	\$0
Triangle Fraternity 2022 Unity Place	0	N/A	N/A	0	0	\$0
Unitas Tower 108 E. Cardinal Blvd.	0	0	N/A	0	0	\$0
University Tower Apts. 2000 Unity Place	0	0	N/A	0	0	\$0
University Pointe 2108 Unity Place	0	N/A	N/A	0	0	\$0
Medical/ Dental Apts. 627 S. Preston St.	0	N/A	N/A	0	0	\$0

Per 2021 Clery Act geography- COVID-19 information from US Department of Education, four hotels were added as on-campus and on-campus student housing facilities due to housing quarantined students. These hotels were utilized from 1/1/2021 through 5/31/2021: Residence Inn (700 Phillips Lane), Hampton Inn (800 Phillips Lane), Tru by Hilton (810 Phillips Lane), Springhill Suites (820 Phillips Lane), Hampton Inn (1501 Broadway St. Clarksville, IN). No fire data was collected.



## 2020 Annual On-Campus Student Residence Fire Statistics

Resident Hall	Total Fires	Fire Report Number	Cause of Fire	Number of Fire Injuries	Number of Fire Deaths	Property Damage Values
Beta Theta Pi Sorority 2038 Unity Place	0	0	N/A	0	0	\$0
Bettie Johnson Hall 401 W. Cardinal Blvd.	1	R20000671	Grease Fire	0	0	\$5,000
Billy Minardi Hall 2040 S. Fourth St.	0	0	N/A	0	0	\$0
Cardinal Towne 1830 S. Third St	1	R20000051	Stove/Kitchen Fire	0	0	\$300
Chi Omega Sorority 2018 Unity Place	0	N/A	N/A	0	0	\$0
Community Park 20330S. Fourth St.	0	N/A	N/A	0	0	\$0
Delta Zeta Sorority 2104 Unity Place	0	N/A	N/A	0	0	\$0
Kurz Hall 1900 S. Fourth St.	0	N/A	N/A	0	0	\$0
Lambda Chi Alpha Fraternity 2100 Unity Place	0	N/A	N/A	0	0	\$0
Louisville Hall 318 W. Brandeis St.	0	0	N/A	0	0	\$0
Miller Hall 2001 S. First St.	1	R20000194	Arson, 55-gal garbage can	0	0	\$1,500
Phi Kappa Tau Fraternity 2106 Unity Place	0	N/A	N/A	0	0	\$0
Sigma Phi Epsilon Sorority 2034 Unity Place	0	N/A	N/A	0	0	\$0
Threlkeld Hall 121 E. Centennial Walk	0	N/A	N/A	0	0	\$0
Triangle Fraternity 2022 Unity Place	0	N/A	N/A	0	0	\$0
Unitas Tower 108 E. Cardinal Blvd.	0	0	N/A	0	0	\$0
University Tower Apts. 2000 Unity Place	0	N/A	N/A	0	0	\$0
University Pointe 2108 Unity Place	0	N/A	N/A	0	0	\$0
Medical / Dental Apts. 627 S. Preston St.	1	R20000474	Electric Scooter, Shorted out battery	0	0	\$1,250

Per 2021 Clery Act geography- COVID-19 information from US Department of Education, four hotels were added as on-campus and on-campus student housing facilities due to housing quarantined students. These hotels were utilized from 8/1/2020 through 12/31/2020: Residence Inn (700 Phillips Lane), Hampton Inn (800 Phillips Lane), Tru by Hilton (810 Phillips Lane), and Springhill Suites (820 Phillips Lane). No fire data was collected.

# Quick Reference Guide

Print the following two pages to keep as a reference.

Organizatiuon	URL
Active Shooter Training	<a href="https://louisville.edu/police/docs/run-hide-fight">https://louisville.edu/police/docs/run-hide-fight</a>
Active Shooter Video	<a href="https://www.youtube.com/watch?v=hPZKqvWF578">https://www.youtube.com/watch?v=hPZKqvWF578</a>
Annual Security and Fire Safety Reports	<a href="http://louisville.edu/police/clery-crime-reports">http://louisville.edu/police/clery-crime-reports</a>
Anonymous Reporting Form	<a href="https://cm.maxient.com/reportingform.php?UnivofLouisville&amp;layout_id=3">https://cm.maxient.com/reportingform.php?UnivofLouisville&amp;layout_id=3</a>
Belknap Campus Health	<a href="http://louisville.edu/campushealth">http://louisville.edu/campushealth</a>
Belknap Counseling	<a href="http://louisville.edu/counseling">http://louisville.edu/counseling</a>
BRICC	<a href="http://louisville.edu/bricc">http://louisville.edu/bricc</a>
Cardsafety: Active Shooter Video	<a href="https://louisville.edu/cardsafety">https://louisville.edu/cardsafety</a>
Center for Women and Families	<a href="https://www.thecenteronline.org/get-help/">https://www.thecenteronline.org/get-help/</a>
Centerstone Crisis Center	<a href="https://centerstone.org/">https://centerstone.org/</a>
CSA Reporting Form	<a href="https://cm.maxient.com/reportingform.php?UnivofLouisville&amp;layout_id=11">https://cm.maxient.com/reportingform.php?UnivofLouisville&amp;layout_id=11</a>
Daily Crime Log	<a href="https://louisville.edu/police/crime-log">https://louisville.edu/police/crime-log</a>
Depression Center	<a href="http://louisville.edu/depression">http://louisville.edu/depression</a>
Domestic Violence Intake Center	<a href="https://louisvilleky.gov/government/county-attorney/domestic-violence-intake-center">https://louisvilleky.gov/government/county-attorney/domestic-violence-intake-center</a>
Drug Free Workplace Policy	<a href="https://louisville.edu/policies/policies-and-procedures/pageholder/pol-drug-free-workplace">https://louisville.edu/policies/policies-and-procedures/pageholder/pol-drug-free-workplace</a>
Emergency Management	<a href="https://louisville.edu/police/emergency-management">https://louisville.edu/police/emergency-management</a>
Faculty Disciplinary Policy	<a href="https://louisville.edu/facultyhandbook">https://louisville.edu/facultyhandbook</a>
Fire Safety	<a href="http://louisville.edu/firesafety">http://louisville.edu/firesafety</a>
Honoring 25 Years of the Clery Act	<a href="https://www.youtube.com/watch?v=Dq1PojciADs">https://www.youtube.com/watch?v=Dq1PojciADs</a>
HSC Campus Health	<a href="http://louisville.edu/campushealth">http://louisville.edu/campushealth</a>
HSC Counseling	<a href="http://louisville.edu/counseling">http://louisville.edu/counseling</a>
Anthem EAP	<a href="https://www.AnthemEAP.com">https://www.AnthemEAP.com</a>
KY State Police Sex Offender Registry	<a href="http://kentuckystatepolice.org/sex-offender-registry/">http://kentuckystatepolice.org/sex-offender-registry/</a>
LENSalert	<a href="https://louisvilleky.gov/government/emergency-services/lensalert-smart911">https://louisvilleky.gov/government/emergency-services/lensalert-smart911</a>
Louisconnect (for food, bed, job, etc)	<a href="https://louisconnect.com">https://louisconnect.com</a>
Louisville Metro Police Dept	<a href="https://www.louisville-police.org/">https://www.louisville-police.org/</a>
Michael H. Minger Foundation Mission Statement	<a href="https://www.youtube.com/watch?v=SZTfbj0DJdc">https://www.youtube.com/watch?v=SZTfbj0DJdc</a>
PEACC	<a href="http://louisville.edu/peacc">http://louisville.edu/peacc</a>
Policy and Procedures Library	<a href="https://louisville.edu/policies">https://louisville.edu/policies</a>
Purpose of the Clery Act	<a href="https://www.youtube.com/watch?v=3Ez_g7vbUeM">https://www.youtube.com/watch?v=3Ez_g7vbUeM</a>
Residence Hall Policies	<a href="https://louisville.edu/housing/info/policies/reshallpolicies">https://louisville.edu/housing/info/policies/reshallpolicies</a>
Disciplinary Policy	<a href="https://louisville.edu/policies/policies-and-procedures/pageholder/pol-discipline">https://louisville.edu/policies/policies-and-procedures/pageholder/pol-discipline</a>
Student Code of Conduct	<a href="https://louisville.edu/dos/students/codeofconduct">https://louisville.edu/dos/students/codeofconduct</a>
Student Sexual Misconduct Policy	<a href="http://louisville.edu/dos/students/studentpoliciesandprocedures/student-sexual-misconduct-policy">http://louisville.edu/dos/students/studentpoliciesandprocedures/student-sexual-misconduct-policy</a>
Suicide & Crisis Lifeline	<a href="https://988lifeline.org/">https://988lifeline.org/</a>
The Faculty Handbook	<a href="https://louisville.edu/facultyhandbook">https://louisville.edu/facultyhandbook</a>
The Redbook	<a href="https://louisville.edu/provost/redbook/">https://louisville.edu/provost/redbook/</a>
The Trevor Project, get help now	<a href="https://www.thetrevorproject.org/get-help-now/?gclid=CjwKCAjwrKr8BRB_EiwA7eFapvXNXPyAUOo0RzxlcinHMc_uQpu3PS5QFrVNW4LPC191cVKItMfNphoCuyUQAvd_BwE">https://www.thetrevorproject.org/get-help-now/?gclid=CjwKCAjwrKr8BRB_EiwA7eFapvXNXPyAUOo0RzxlcinHMc_uQpu3PS5QFrVNW4LPC191cVKItMfNphoCuyUQAvd_BwE</a>
Title IX	<a href="https://louisville.edu/titleix">https://louisville.edu/titleix</a>

## Quick Reference Guide (continued)

<b>Trevor Space</b>	<a href="https://www.trevorspace.org/?utm_source=trevor_website&amp;utm_medium=web&amp;utm_campaign=homepage_tabs#">https://www.trevorspace.org/?utm_source=trevor_website&amp;utm_medium=web&amp;utm_campaign=homepage_tabs#</a>
<b>University Code of Conduct/ Employees</b>	<a href="https://louisville.edu/compliance/ico/files/code-of-conduct">https://louisville.edu/compliance/ico/files/code-of-conduct</a>
<b>University of Louisville Police</b>	<a href="https://louisville.edu/police">https://louisville.edu/police</a>
<b>UofL Annual Security and Fire Safety Reports</b>	<a href="http://louisville.edu/police/clery-crime-reports">http://louisville.edu/police/clery-crime-reports</a>
<b>UofL Counseling</b>	<a href="http://louisville.edu/counseling">http://louisville.edu/counseling</a>
<b>UofL Dean of Students</b>	<a href="https://louisville.edu/dos">https://louisville.edu/dos</a>
<b>UofL Hospital ER</b>	<a href="https://uoflhospital.org/services/emergency-department">https://uoflhospital.org/services/emergency-department</a>
<b>UofL Hospital/ Psychiatric-Care</b>	<a href="https://uoflhospital.org/services/psychiatric-care">https://uoflhospital.org/services/psychiatric-care</a>

**Any questions, please contact  
ULPD (502) 852-6111**

UNIVERSITY OF  
**LOUISVILLE.**

