

Tuesday: Picture Match + Spelling Pyramid Homework [the handout for it is two pages down]

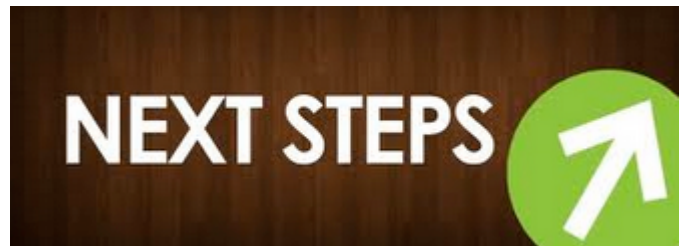
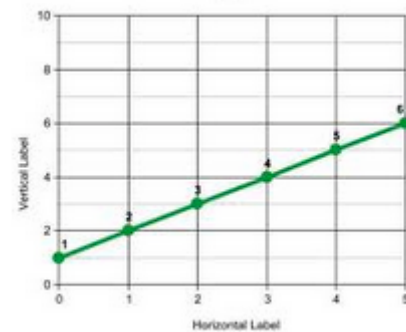
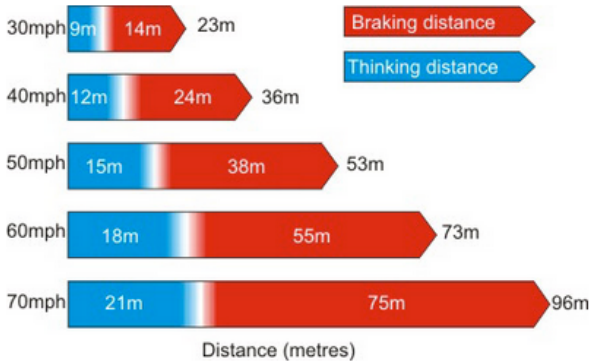
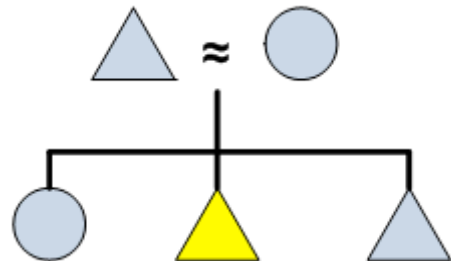
Materials: 1 board + 1 set of words **per 2 students (total: 12 of each)**

Routine: (a) once the Pictionary is completed; pairs sitting across the same tables share & explain their work —practice for whole class review and (b) whole class discussion with the teacher MODELING explanations.

Picture Match Words

Strobe pictures	Speed
Average	Emergency
Instantaneous	Approximate
Stopping distance	Graph
Safety	Following

Picture Match Board



Wednesday [Check homework from Tuesday]; Ask the kids to partner & to (a) find 1 positive about the sentence and (b) 1 suggestion for improvement.

Spelling Pyramid

Average A Av Aver Avera Averag Average	Following
Instantaneous	Approximate
Stopping distance	Strobe picture
Emergency	Safety

Write 2 sentences using the words from the spelling pyramid + the sentence frame below:

_____ by _____ ing _____

1. _____

2. _____

Card game

<p>Strobe photo/picture: a photo of a moving object taken at regular intervals (for example, every 3 seconds)</p>	<p>Safety: a state of no harm or danger</p>
<p>Graph: a drawing showing how much or how quickly something changes</p>	<p>Approximate: to calculate the almost exact value or position (=estimate)</p>
<p>Stopping distance: the sum of the thinking distance and the braking distance.</p>	<p>Emergency: dangerous situation that calls for immediate action</p>
<p>Instantaneous: happening very quickly (= in an instant)</p>	<p>Speed: the rate of movement (the rate at which someone or something such as a car moves)</p>
<p>Average: a number calculated by summing up numerals (= 1,2,3) and then dividing the sum by the number of numerals</p>	<p>Following: immediately after (something)</p>

Jeopardy

- a. Round 1: “Jeopardy” (Materials: the Wednesday set for the host)
 - i. The class splits into two teams + 1 person is the game host
 - ii. 1 person from each team stands approaches the host’s table.
 - iii. The host reads a word, the first person who “pushes a button” gets to provide the word definition. The correct definition gets the team a point.
 - iv. The game continues until all words have been used.
- b. Round 2: Each team gets a set of 4 key vocab words and blank sentence strip. The teams are asked to develop sentences using the key words. Each scientifically (1pt) + grammatically correct (1pt) sentence gets the team 2 points.

Friday

- c. Quiz
- d. **Grade own understanding (using the Vocab Journal on a scale of 1-4)**

Answer Key

#	Sentence	Letter	Correct
1.	It gets a large amount of force to get a large car to move at high <u>speed</u> .	C	
2.	The car crash led to an <u>instantaneous</u> death of one passenger; the other passenger died later in the hospital.	B	
3.	On wet roads, the <u>stopping distance</u> is greater than on dry roads.	D	
4.	During our next physics unit, we will learn to <u>approximate</u> the distance between the Earth and the planets.	A	
5.	The school bus driver was forced to make an <u>emergency</u> stop when one of the tires got damaged.	E	
6.	<u>Following</u> a series of science activities, we usually have a chapter challenge.	B	
7.	To capture motions, <u>strobe pictures</u> were taken every 5 seconds.	E	
8.	10 is the <u>average</u> of 2, 4, 6, and 8.	A	
9.	She drew (plotted) a <u>graph</u> showing the change in the car’s velocity over time.	C	
10.	Air bags are needed for a better car <u>safety</u> .	D	

Name _____ Date _____

Using the Word Bank, choose the best word (or phrase) that matches each sentence. Write the word on the line and put the corresponding letter in the space provided.

Part A

A. approximate	D. stopping distance
B. instantaneous	E. emergency
C. speed	

#	Sentence	Letter	Correct
1.	It gets a large amount of force to get a large car to move at high _____.		
2.	The car crash led to an _____ death of one passenger; the other passenger died later in the hospital.		
3.	On wet roads, the _____ is greater than on dry roads.		
4.	During our next physics unit, we will learn to _____ the distance between the Earth and the planets.		
5.	The school bus driver was forced to make an _____ stop when one of the tires*got damaged.		

Part B

A. average	D. safety
B. Following	E. strobe pictures
C. graph	

#	Sentence	Letter	Correct
6.	_____ a series of science activities, we usually have a chapter challenge.		
7.	To capture motions, _____ were taken every 5 seconds.		
8.	10 is the _____ of 2, 4, 6, and 8.		
9.	She drew (plotted) a _____ showing the change in the car's velocity over time.		
10.	Air bags are needed for a better car _____.		
Total correct			____/10

Name _____ Date _____

Bubble Answer Sheet

A

B

C

D

Part A

- | | | | | |
|----|-------------------------|-------------------------|-------------------------|-------------------------|
| 1. | <input type="radio"/> A | <input type="radio"/> B | <input type="radio"/> C | <input type="radio"/> D |
| 2. | <input type="radio"/> A | <input type="radio"/> B | <input type="radio"/> C | <input type="radio"/> D |
| 3. | <input type="radio"/> A | <input type="radio"/> B | <input type="radio"/> C | <input type="radio"/> D |
| 4. | <input type="radio"/> A | <input type="radio"/> B | <input type="radio"/> C | <input type="radio"/> D |

Part B

- | | | | | |
|----|-------------------------|-------------------------|-------------------------|-------------------------|
| 2. | <input type="radio"/> A | <input type="radio"/> B | <input type="radio"/> C | <input type="radio"/> D |
| 3. | <input type="radio"/> A | <input type="radio"/> B | <input type="radio"/> C | <input type="radio"/> D |
| 4. | <input type="radio"/> A | <input type="radio"/> B | <input type="radio"/> C | <input type="radio"/> D |
| 5. | <input type="radio"/> A | <input type="radio"/> B | <input type="radio"/> C | <input type="radio"/> D |