

5

MOST APPLIED TO ONLINE MASTER'S PROGRAMS

2020 - 2021



**NO GRE/GMAT
REQUIRED TO
APPLY**



**FLEXIBLE 100%
ONLINE COURSES**



**SAME RENOWNED
UofL EDUCATION
AS ON-CAMPUS PROGRAMS**

1 MASTER OF BUSINESS ADMINISTRATION

UNIVERSITY OF
LOUISVILLE
COLLEGE OF BUSINESS



Designed for working professionals who want to advance their career, broaden their business expertise, and distinguish themselves in the workplace—all in just 5 semesters.

- Innovative electives and specialized certificates can be earned at no extra time or cost

- Experience 1:1 faculty interactions and focused instruction

- Optional 10-day business study trip included in cost*

- 45-credit hour program, accelerated 5-week course terms

\$107,680

2020 MEDIAN PAY FOR
EXECUTIVE MANAGERS

4%

PREDICTED JOB GROWTH
(2019-2029)

* MBA program charge includes the cost of the trip minus airfare, most dinners, and personal incidentals. No refunds or discounts are applied if the student selects not to travel.

LEARN MORE



2 MASTER OF SCIENCE IN SOCIAL WORK

UNIVERSITY OF
LOUISVILLE
KENT SCHOOL OF
SOCIAL WORK



Expand your understanding of practices that promote social justice and build stronger communities.

- Highly-ranked and CSWE-accredited program
- Open to professionals with a bachelor's in any area of study, with an accelerated degree option (30 hours) for applicants with a BSW

- Optional specializations available in Psychosocial Oncology, Forensic Social Work, Mental Health, Alcohol and Drug Counseling, Military Social Work or Gerontology
- Active-duty military rate of \$250 per credit hour applies

\$51,760

2020 MEDIAN PAY FOR
SOCIAL WORKERS

13%

PREDICTED JOB GROWTH
(2019-2029)

LEARN MORE



3 MASTER OF SCIENCE IN HUMAN RESOURCES AND ORGANIZATION DEVELOPMENT

UNIVERSITY OF
LOUISVILLE
COLLEGE OF EDUCATION
& HUMAN DEVELOPMENT



Prepares working professionals for leadership in human resources, as well as effectively guiding workplace learning and organizational change in just 33 credit hours (11 courses).

- SHRM-aligned curriculum and insight from industry experts allows you to gain the extra edge you need on the job and superior marketability in their field
- Accelerated course terms

- Apply classroom knowledge to workplace situations in real time and incorporate work experience into the learning process
- Active-duty military rate of \$250 per credit hour applies

\$121,220

2020 MEDIAN PAY FOR
HR MANAGERS

6%

PREDICTED JOB GROWTH
(2019-2029)

LEARN MORE



4 MASTER OF SCIENCE IN COMPUTER SCIENCE

UNIVERSITY OF
LOUISVILLE
J.B. SPEED SCHOOL
OF ENGINEERING

Designed for professionals with a strong technical background who are seeking advanced credentials in computer science foundations, software and analytics in order to distinguish themselves in the field.

- 30 credit-hour (10 course) program
- Completed in as little as 2 years

- Earn a certificate in Data Science or Cybersecurity as part of your degree

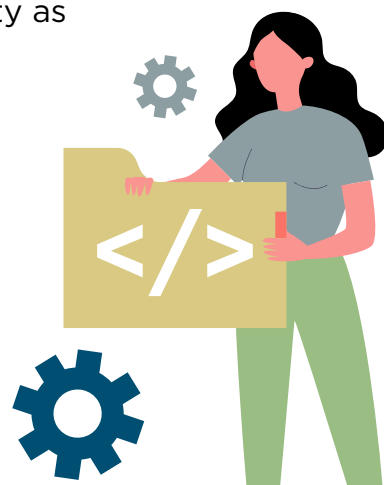
\$126,830

2020 MEDIAN PAY FOR
COMPUTER SCIENTISTS

15%

PREDICTED JOB GROWTH
(2019-2029)

LEARN MORE



5 MASTER OF ENGINEERING IN ENGINEERING MANAGEMENT

UNIVERSITY OF
LOUISVILLE
J.B. SPEED SCHOOL
OF ENGINEERING

Acquire knowledge in the key areas of business and engineering management, and learn to effectively manage complex engineering projects, teams, products and services in 30 credit hours (10 courses).

- Nationally-recognized engineering program taught by industry experts
- Covers essential areas including project management, process improvement, human resources management, marketing, law and more

- Complete your degree in as little as 1 to 2 years, with accelerated course terms and no thesis requirement
- Earn an optional Six Sigma Black Belt certification

\$149,530

2020 MEDIAN PAY FOR
ENGINEERING MANAGERS

3%

PREDICTED JOB GROWTH
(2019-2029)

LEARN MORE



GET STARTED TODAY ▶ louisville.edu/online

UNIVERSITY OF LOUISVILLE®

All listed job and pay information retrieved from bls.gov