

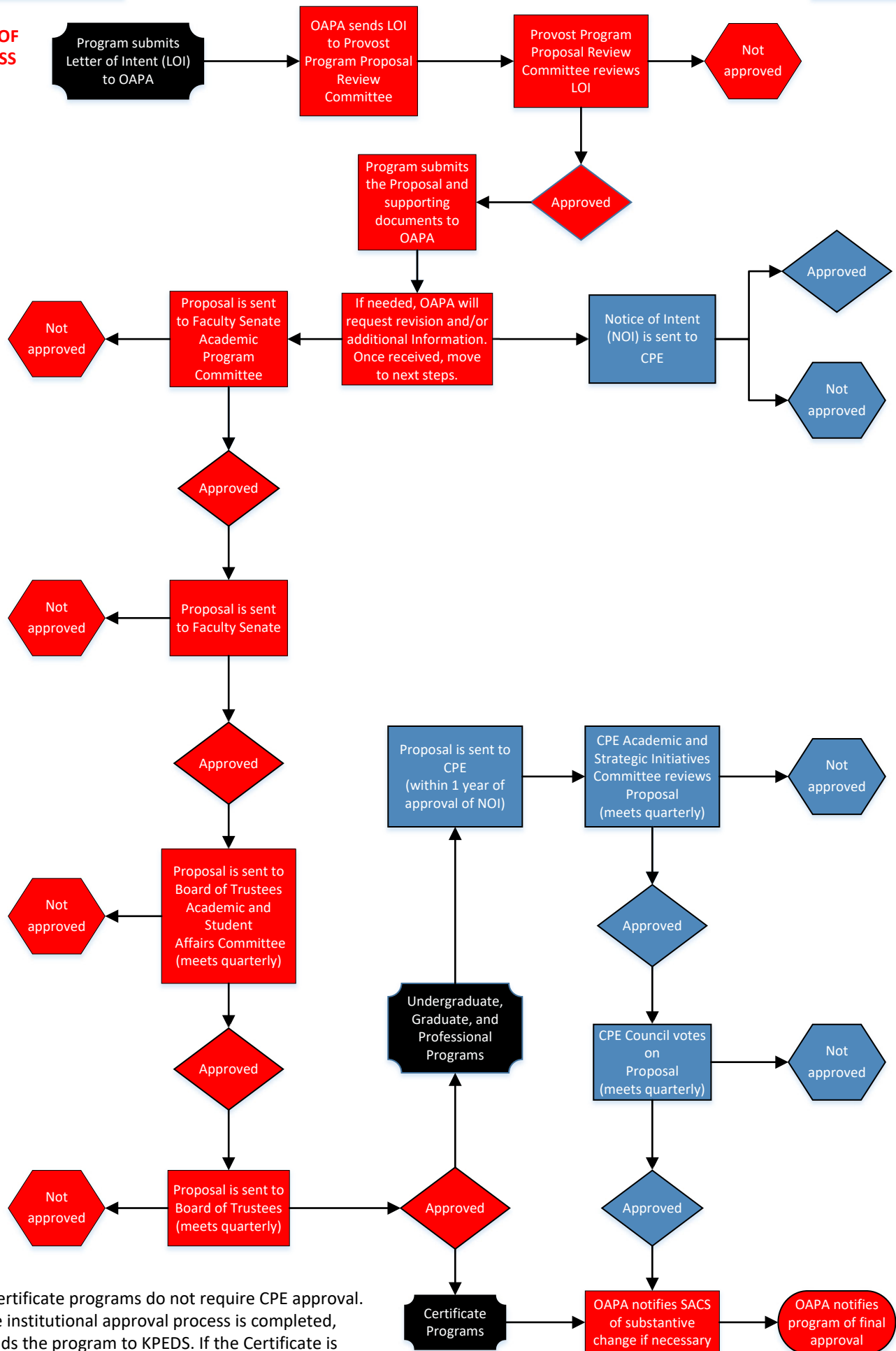
UofL New Academic Program Approval Flowchart

Office of Academic Planning and Accountability (OAPA)

UofL Process

CPE Process

START OF PROCESS



NOTE: Certificate programs do not require CPE approval. After the institutional approval process is completed, OAPA adds the program to KPEDS. If the Certificate is composed of all new coursework, SACS is notified.

END OF PROCESS