

From the lab bench to a career in science policy

Christopher L. Pickett, Ph.D.

Director

Rescuing Biomedical Research

@ChrisPickett5



Boulder, CO

The Poplar Grove Muse



Salt Lake City, UT

"Salt Lake City Skyline Mountains" by John Pluta



St. Louis, MO

"STL Skyline 2007 edit" by Buphoff

- Science policy fellow – 2012



- Science policy analyst – 2014

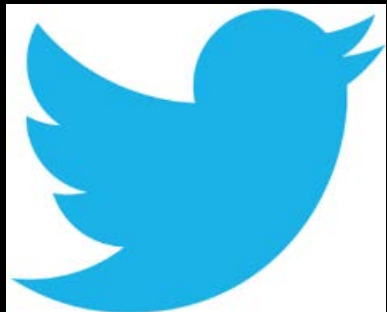


- Director – 2016



THE HILL

Roll Call



POLITICO
STAT



Blogs

Position statements

Email

News releases

Summaries

White papers



Nondefense
Discretionary Science

2013 Survey

Unlimited

Vanishing Opportunity

Potential



Sam Stein



Become a fan



stein@huffingtonpost.com

Nearly 20 Percent Of Scientists Contemplate Moving Overseas Due In Part To Sequestration

Posted: 08/29/2013 7:30 am EDT

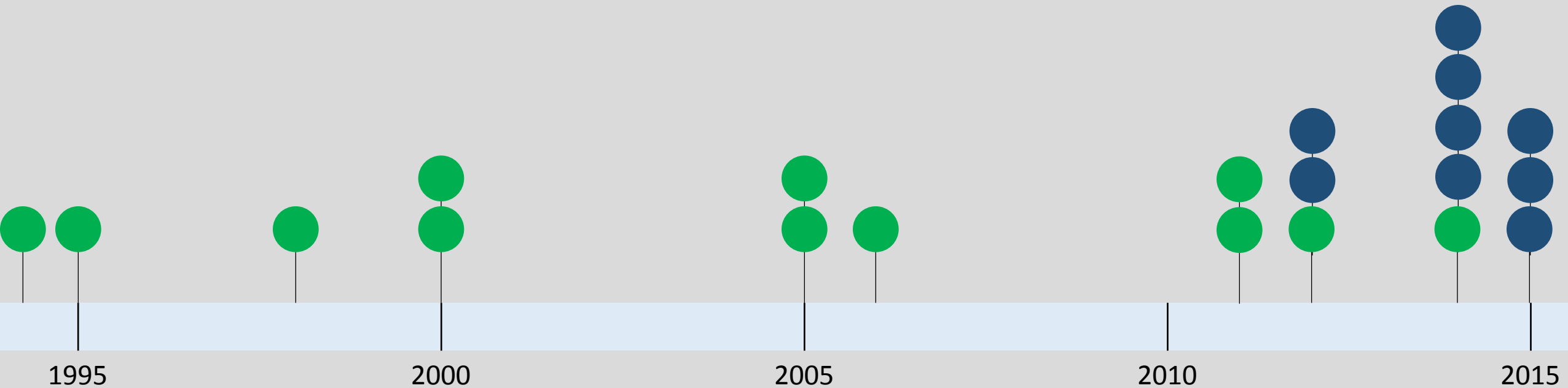
Updated: 08/30/2013 1:48 pm EDT

Scientists laid off due to budget cuts

By Jennifer Liberto @CNNMoney September 3, 2013: 6:07 AM ET



Reports on the biomedical research workforce



Toward a sustainable biomedical research enterprise: Finding consensus and implementing recommendations

Christopher L. Pickett^{a,1}, Benjamin W. Corb^a, C. Robert Matthews^b, Wesley I. Sundquist^c, and Jeremy M. Berg^d

2

Funding

1

Regulatory
burden

5

Training/
Workforce

Five training and workforce recommendations

- Increase postdoc compensation
- Reduce graduate and postdoc training periods
- Broaden training
- Support more trainees on training grants and fellowships
- Employ more staff scientists



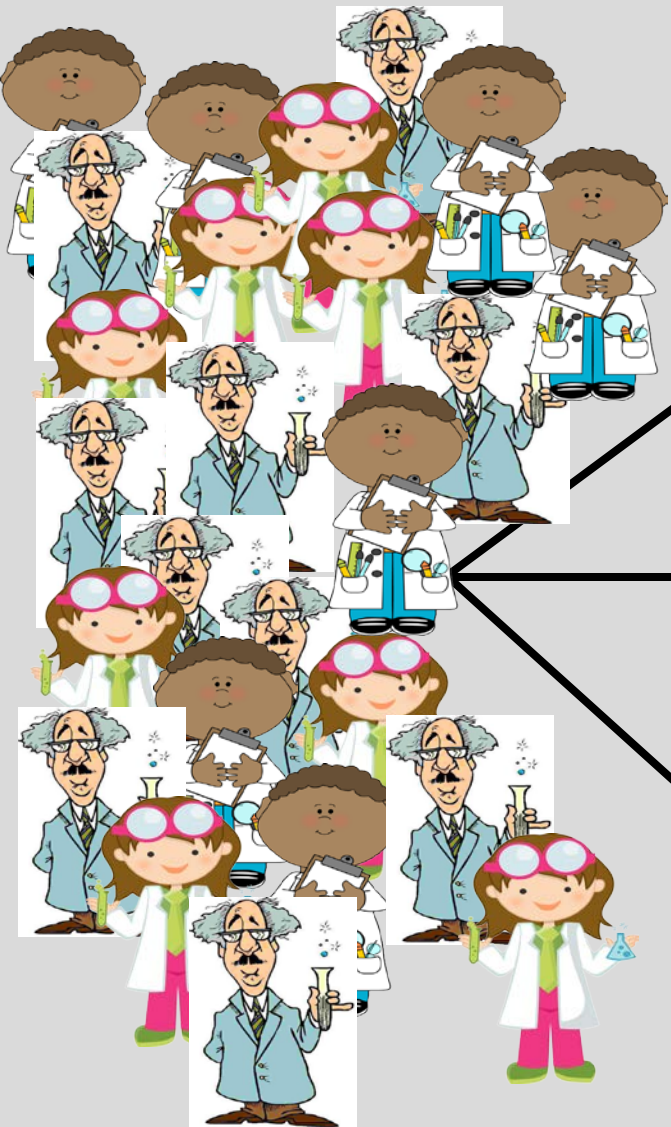
Rescuing US biomedical research from its systemic flaws

Bruce Alberts^a, Marc W. Kirschner^b, Shirley Tilghman^{c,1}, and Harold Varmus^d



Hypercompetition

Constant




\$\$\$

Science
nature
Cell

**WANTED
PhD FACULTY**

hypercompetition



*To catalyze changes that promote effective science
policies and culture in the biomedical research enterprise.*



Tips for applying for fellowships

- Postdoc not required
- Know the difference between policy and outreach
- No science
- Be agile
- Don't waste your words



Thank you!



Contact

Christopher L. Pickett,
Ph.D.

clp3@princeton.edu

cpickett@aaas.org

@ChrisPickett5

@resbiom