

2019 Undergraduate Participants (hyperlink to research poster)



**Jala Beasley-Williams**  
**University of Southern California**  
Examination of Effects of PFKFB4 Inhibition on  
HER2+ Breast Cancer Cells  
Faculty Mentor: Sucheta Telang



**Destine Ede**  
**Emory University**  
A Potential Novel Treatment for  
Neurofibromatosis Type 1 via RAS Inhibition  
Faculty Mentor: Geoff Clark



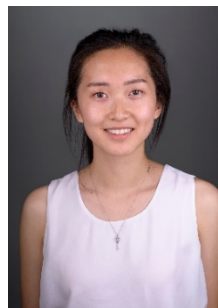
**Alicia Brinegar**  
**Holmes Community College**  
Functional and Biophysical Characterization of  
Cancer-Related PTP4A3 Mutations  
Faculty Mentor: Donghan Lee



**Claire Feller**  
**University of Dayton**  
Comparing Effects of Combination Treatments  
Containing Alisertib and DNA Damage-Inducing  
Agents in Glioblastoma Cells  
Faculty Mentor: Norman Lehman



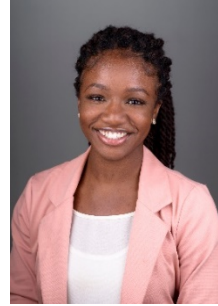
**Mackenzie Burroughs**  
**Oklahoma State University**  
Induction of Macrophages by Liver Tumor-  
Derived Small Extracellular Vesicles  
Faculty Mentor: Joshua Hood



**Kelly Feng**  
**Knox College**  
Nucleoporin 210 Interacts with Ubiquilin 1  
Through its STI-1 Domain  
Faculty Mentor: Levi Beverly



**Sydney Fischer**  
**University of Louisville**  
Site-specific Modification for Enhancement of  
Tumor Microenvironment Delivery of Anti-PD-  
L1 Antibody  
Faculty Mentor: Haixun Gao



**Alyssa Kabithe**  
**University of Louisville**  
Exploring the Relationship Between Trauma,  
Smoking, and Leukocyte Telomere Length (LTL)  
in Minority and Caucasian Non-small Cell Lung  
Cancer Patients  
Faculty Mentor: Sandra Sephton



**Sara Hanna,**  
**University of Kentucky**  
Validation of Novel KRAS-mutant Synthetic  
Lethal Target in Non-Small Cell Lung Cancer  
Faculty Mentor: Leah Siskind



**Grace Lian**  
**University of North Carolina**  
Investigating Molecules That Confer Sensitivity  
to AS1411 in Lung Adenocarcinoma Cells  
Faculty Mentor: Paula Bates



**Stacy Henley**  
**University of Louisville**  
Targeting Chemotherapy Resistance in Non-  
Small Cell Lung Cancer via Berry  
Anthocyanidins  
Faculty Mentor: Ramesh Gupta



**Steven Nguyen-Ho**  
**University of Louisville**  
Lack of FGF21 promotes hepatic steatosis and  
insulin resistance (IR) leading to de novo  
lipogenesis  
Faculty Mentor: Yan Li



**Chidum Okeke**  
**University of Louisville**  
Impact of mitogen-activated protein kinase (MAPK14/p38) sequence variant partners on aggressive prostate cancer  
Faculty Mentor: La Creis Kidd



**Nicole Sparling**  
**University of Louisville**  
Arsenic and hsa-miR-186 Overexpression Impair the DNA Damage Response Pathway in Human Keratinocytes  
Faculty Mentor: J. Christopher States



**Meenakshi Pattabiraman**  
**Purdue University**  
Understanding the biological significance of high mannose glycans in terms of ovarian cancer metastasis  
Faculty Mentor: Nobuyuki Matoba



**Onajia Stubblefield,**  
**University of Louisville**  
Factors that Influence Survivability of Individuals with Brain Cancer  
Faculty Mentor: Shesh Rai



**Conner Slone**  
**University of Louisville**  
Investigation of Small Molecule Inhibitors of PHGDH and Endocrine Therapies in Endocrine Resistant ER+ Breast Cancer  
Faculty Mentor: Brian Clem



**Manasa Sunkara,**  
**University of Cincinnati**  
Effect of preoperative narcotics and benzodiazepines on perioperative and postoperative outcome in cancer-related surgeries  
Faculty Mentor: Michael Egger



**Kate Tarvestad**

**University of Notre Dame**

**Chronic Arsenic Exposure and its Effect on the ErbB Family Receptor Tyrosine Kinases**

**Faculty Mentor: Brian Ceresa**

**2019 Medical Student Participants (hyperlink to research poster)**



**Samuel Bochhorst**

**Personalized Nanomedicine Tailored to Lung Cancer Metabolomic Analysis**

**Faculty Mentor: Jill Steinbach-Rankins**



**Toni Carter**

**Outcomes of Esophageal Stent Therapy for the Management of Anastomotic Leaks**

**Faculty Mentor: Robert Martin**



**James Burton**

**Effect of Long Non-Coding RNA ZFAS1 on Epithelial-To-Mesenchymal Transition Protein Expression in Colorectal Cancer Cell Lines**

**Faculty Mentor: Susan Galandiuk**



**Steven Chapman**

**Streptococcus gordonii antagonizes Porphyromonas gordonii-induced OLFM4 in epithelial cells**

**Faculty Mentor: Richard Lamont**



**Tristan Crady**

**Lung Cancer Detection: Analysis of Trace Volatile Organic Compounds in Exhaled Breath Using Silicon Microreactor Technology**  
Faculty Mentor: Sean Fu



**Daniel Hodge**

**The effects of arylamine N-acetyltransferase 1 on tumor immune response**  
Faculty Mentor: David Hein



**Max Duff**

**Effects of Cannabinoids on Retinal Endothelial Cell Function**  
Faculty Mentor: Zhao-hui Song



**Roman Isakov**

**The Effects of Whole Life, Low Dose Cadmium Exposure on Mouse Lung Histology and DNA Damage**  
Faculty Mentor: John Wise, Sr.



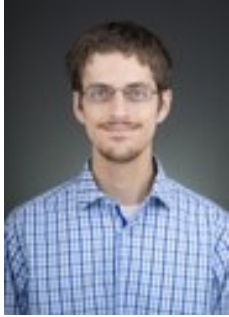
**Andrew Hey**

**Potential of Alisertib by Cabozantinib in Glioblastoma Cells**  
Faculty Mentor: Norman Lehman



**Hannah Jagers**

**The Effects of Whole Life, Low Dose Cadmium Exposure on Mouse Lung Histology and DNA Damage Repair**  
Faculty Mentor: John Wise Sr.



**Jeremy Jones**

Differential reduction in inflammatory mediator production by AML cells using normal human plasma-derived extracellular vesicle subtypes

Faculty Mentor: Joshua Hood



**Bryce Marshall**

Minimally Invasive Esophagectomy in Esophageal Cancer—Predictors of Success

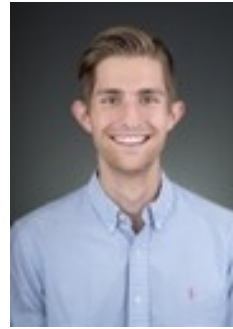
Faculty Mentor: Robert Martin



**Alborz Kalantar**

Ubiquilin 1 Interaction with Ubiquilin 2 and Implications in Formation and Metastasis of Lung Adenocarcinoma

Faculty Mentor: Levi Beverly



**Evan Meiman**

6-Phosphofructo-2-kinase/fructose-2,6-bisphosphatase 4 (PFKFB4) Inhibition in Lung Cancer

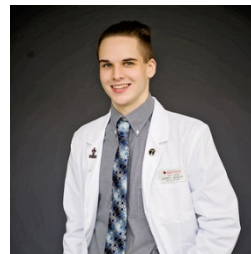
Faculty Mentor: Sucheta Telang



**Phillip Lindsey**

Impact of Glucose Concentration of Perfusate on Perioperative Outcomes in Patients Undergoing Cytoreductive Surgery and Hyperthermic Intraperitoneal Chemotherapy

Faculty Mentor: Michael Egger



**Derek Menefee**

Wnt signaling in age-related Transcriptome Changes in Sentinel Lymph Node and Their Association with Recurrence in Node-Positive Melanoma Patients

Faculty Mentor: Kelly McMasters



**Haley Moss**

**Hepatic Arterial Variant Anatomy and Predisposition to Hepatocellular Carcinoma**  
Faculty Mentor: **Melissa Potts**



**Ankur Patel**

**ZEB mRNA Expression is Affected by Long Non-coding RNA ZFAS1**  
Faculty Mentor: **Susan Galandiuk**



**Sarah Mudra**

**Treatment delays of >90 days associated with poor outcomes in localized breast cancer: a National Cancer DataBase (NCDB) analysis**  
Faculty Mentor: **Beth Riley**



**Andrew Ray**

**Role of Arylamine N-acetyltransferase 1 (NAT1) in Breast Cancer Growth and Metastasis**  
Faculty Mentor: **David Hein**



**Ajay Patel**

**Effect of Long Non-coding RNA on Colon Cancer Migration and Phenotype**  
Faculty Mentor: **Susan Galandiuk**



**Andre Rochet**

**The Effect of Long Non-coding RNA ZFAS1 Knockdown on microRNA Expression in Colon Adenocarcinoma**  
Faculty Mentor: **Susan Galandiuk**



**Ayana Wilson**

**Hepatic Arterial Variant Anatomy and Predisposition to Hepatocellular Carcinoma**  
**Faculty Mentor: Melissa Potts**



**Eric Zuberi**

**An Analysis of Recurrence-Free Survival and Adverse Events in Thermal Ablative Techniques for the Treatment of Primary and Secondary Liver Cancers**  
**Faculty Mentor: Robert Martin**



**Khaleel Wilson**

**Treatment of Locally Advanced Pancreatic Cancer with Irreversible Electroporation: Predictors of Survival**  
**Faculty Mentor: Robert Martin**



**Steven Winter**

**Evaluation of Surface-Modified Nanoparticle Transport and Metastatic Invasion Using a Novel Multicellular Ovarian Tumor Spheroid Model**  
**Faculty Mentor: Jill Steinbach-Rankins**