

Scoping Review of Pediatric Palliative Care and Limited English Proficiency



Alvarez, Ana MD; Selby, Bethany MS2; Lyons, Kelly DO;
Johansen, William MD, Genova, Gina MS, Anderson, Brit MD;



Norton Children's and the University of Louisville School of Medicine
Louisville, Kentucky

BACKGROUND

Around 68.3 million people living in the United States (US) speak a language other than English at home.

Families with Limited English Proficiency (LEP) may struggle to communicate with healthcare workers, especially within the life-limiting scenarios associated with pediatric palliative care (PPC).

Reviewing literature on delivery of PPC care to LEP patients is needed to understand knowledge gaps and improved patient and systems-level processes.

METHODS

A comprehensive literature search of English-language articles published in Anglosphere countries was conducted in PubMed, Cochrane CENTRAL, EMBASE, CINAHL, PsycINFO, and grey literature sources from 2000 to the present.

Controlled vocabulary subject headings and keywords were searched for the concepts of:

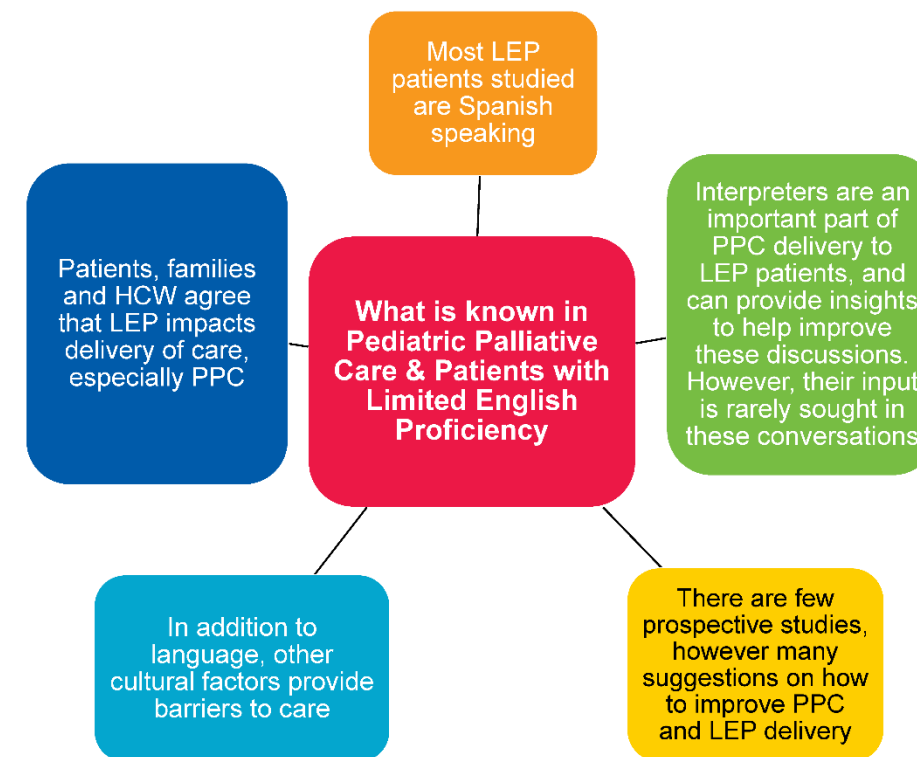
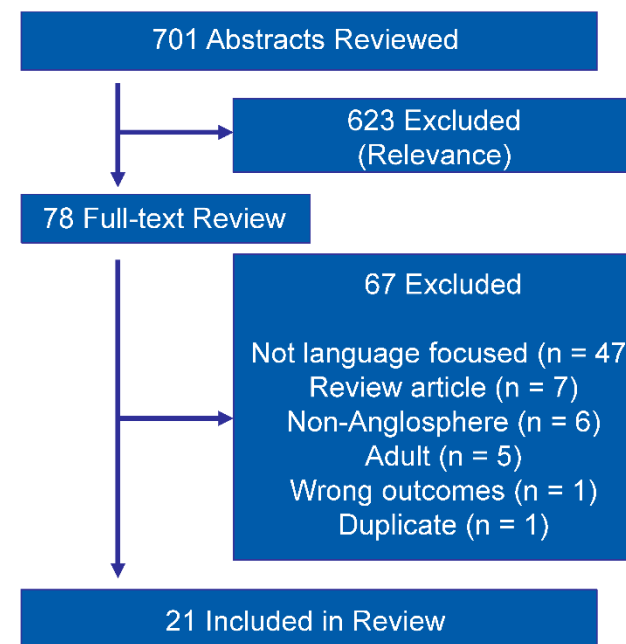
- Palliative care ("palliative care", hospice, "end of life", etc.)
- LEP ("limited English proficiency" interpreter*, specific minority languages, etc.)
- Pediatrics (pediatric*, child*, PICU*, NICU*, etc.).

Articles were screened at the abstract level, then full text by two researchers. Three researchers performed data extraction with final descriptive analysis and mapping to describe the current evidence.

References

Dietrich, S., & Hernandez, E. (2022, December 13). *Nearly 68 million people spoke a language other than English at home in 2019*. Census.gov. <https://www.census.gov/library/stories/2022/12/languages-we-speak-in-united-states.html>

RESULTS



CONCLUSIONS

- Our scoping review is the first to evaluate the current state of PPC for LEP pediatric patients and families.
- Current literature focuses on exploring perspectives on PPC for LEP families from healthcare professionals, interpreters, and patients/families illustrating potential areas for improvement.
- Objective healthcare outcomes research and randomized/prospective studies evaluating improvements and potential barriers for LEP families related to PPC are lacking. Future research investigating these areas is warranted to provide high quality PPC for LEP pediatric patients and families.