

## REVIEW ARTICLE

## MECHANISMS OF DISEASE

## Systemic Lupus Erythematosus

George C. Tsokos, M.D.

From the Division of Rheumatology, Beth Israel Deaconess Medical Center, Harvard Medical School, Boston. Address reprint requests to Dr. Tsokos at the Division of Rheumatology, Beth Israel Deaconess Medical Center, Harvard Medical School, 330 Brookline Ave., CLS 937, Boston, MA 02115, or at gtsokos@bidmc.harvard.edu.

N Engl J Med 2011;365:2110-21.  
Copyright © 2011 Massachusetts Medical Society.

**A**LTHOUGH THE TERM “LUPUS ERYTHEMATOSUS” WAS INTRODUCED BY 19th-century physicians to describe skin lesions, it took almost 100 years to realize that the disease is systemic and spares no organ and that it is caused by an aberrant autoimmune response.<sup>1</sup> The clinical heterogeneity of the disease forced the establishment of 11 criteria (Table 1), with 4 needed for the formal diagnosis of systemic lupus erythematosus (SLE).<sup>2</sup> The involvement of vital organs and tissues such as the brain, blood, and the kidney in most patients, the vast majority of whom are women of childbearing age, impels efforts to develop diagnostic tools and effective therapeutics (Fig. 1). The prevalence ranges from 20 to 150 cases per 100,000 population, with the highest prevalence reported in Brazil, and appears to be increasing as the disease is recognized more readily and survival increases. In the United States, people of African, Hispanic, or Asian ancestry, as compared with those of other racial or ethnic groups, tend to have an increased prevalence of SLE and greater involvement of vital organs. The 10-year survival rate is about 70%.<sup>3</sup>

The diverse clinical manifestations of SLE present a challenge to the clinician. Several mechanisms lead to a loss of self-tolerance and organ dysfunction. This article summarizes the genetic, epigenetic, environmental, hormonal, and immunoregulatory factors that contribute to the expression of tissue injury and clinical manifestations and also describes efforts to develop rational treatments for the disease.

## INFLUENCES ON SLE

## GENETIC INFLUENCES

Genetic factors confer a predisposition to the development of SLE.<sup>4</sup> Although in rare cases SLE may be associated with the deficiency of a single gene (e.g., the complement components C1q and C4),<sup>4,5</sup> the disease more commonly results from the combined effect of variants in a large number of genes. Lack of C4 has been linked to decreased elimination of self-reactive B cells (compromising negative selection),<sup>6</sup> whereas lack of C1q leads to deficient elimination of necrotic (waste) material.<sup>7</sup> Each allele contributes only minimally, and the cumulative effect of several genes is necessary to substantially increase the risk of SLE.

Most single-nucleotide polymorphisms (SNPs) associated with SLE fall within non-coding DNA regions of immune response-related genes.<sup>8</sup> Some genes have been associated with several autoimmune diseases (e.g., *STAT4* and *PTPN22* with rheumatoid arthritis and diabetes); others appear to increase the risk of SLE specifically (Fig. 2). Certain SNPs linked to SLE have been identified for genes whose products may contribute to abnormal T-cell function in SLE (*CD3-ζ*<sup>9</sup> and *PP2Ac*<sup>10</sup>). A recent large-scale replication study confirmed some of these associations and identified *TNIP1*, *PRDM1*, *JAZF1*, *UHRF1BP1*, and *IL10* as risk loci for SLE.<sup>11</sup> Although these findings are promising, the loci identified so far can account for only about 15% of the heritability of SLE.<sup>12</sup> In addition, an altered copy number of certain genes, such as *C4*,<sup>13</sup> *FCGR3B*,<sup>14</sup> and *TLR7*,<sup>15</sup> has been linked to disease expression.

**ENVIRONMENTAL INFLUENCES**

Epigenetic changes such as DNA hypomethylation have been attributed to medications known to cause SLE.<sup>16</sup> Smoking and exposure to ultraviolet light have been implicated in epidemiologic studies.<sup>17</sup> The possibility that viruses may trigger SLE has been considered during the past 40 years. The faster seroconversion to Epstein–Barr virus (EBV) infection<sup>18</sup> and higher viral load<sup>19</sup> in patients with SLE than in normal subjects, the molecular similarity between EBV nuclear antigen 1 and the common lupus autoantigen Ro, and the inability of CD8+ T cells to control EBV-infected B cells<sup>20</sup> suggest that viruses may contribute to the expression of lupus.

**FEMALE HORMONES AND SEX**

Hormones contribute through unknown mechanisms to the increased prevalence of SLE among women.<sup>1</sup> The X chromosome may contribute independently from hormones because in castrated female and male mice that have been genetically manipulated to express XX, XO (female), XY, or XXY (male) combinations, the presence of two X chromosomes increases the severity of SLE.<sup>21</sup> Among the genes known to contribute to the pathogenesis of SLE is *CD40*, which is located on chromosome X. Pregnancy may aggravate SLE, and although it is not clear whether rising levels of estradiol or progesterone play a role, a link between pregnancy outcome and the status of the disease at conception has been noted<sup>22</sup>; in fact, the levels of these hormones are lower during the second and third trimesters in patients with SLE than in healthy pregnant women.<sup>23</sup> Treatment with dehydroepiandrosterone has shown some clinical benefit.<sup>24</sup> Pregnancy in patients with SLE presents a clinical challenge that requires the involvement of relevant specialists.

**EPIGENETIC REGULATION OF GENE EXPRESSION**

DNA accessibility to transcription factors, and thus gene expression, is regulated by DNA methylation and histone modifications (acetylation and methylation). Hydralazine and procainamide inhibit DNA methylation and can induce manifestations of lupus in healthy persons.<sup>16</sup> The regulatory regions of some genes known to be involved in the pathogenesis of the disease (*ITGAL*, *CD40LG*, *CD70*, and *PPP2CA*) have been reported to be hypomethylated in SLE. Recruitment of histone deacetylase 1 to the *IL2* promoter suppresses its expression.<sup>25</sup>

**Table 1. American College of Rheumatology Criteria for the Diagnosis of Systemic Lupus Erythematosus (SLE).\***

Criterion	Definition
Malar rash	A rash on the cheeks and nose, often in the shape of a butterfly
Discoid rash	A rash that appears as red, raised, disk-shaped patches
Photosensitivity	A reaction to sunlight that causes a rash to appear or get worse
Oral ulcers	Sores in the mouth
Arthritis	Joint pain and swelling of two or more joints
Serositis	Inflammation of the lining around the lungs (pleuritis) or inflammation of the lining around the heart that causes chest pain, which is worse with deep breathing (pericarditis)
Kidney disorder	Persistent protein or cellular casts in the urine
Neurologic disorder	Seizures or psychosis
Blood disorder	Anemia (low red-cell count), leukopenia (low white-cell count), lymphopenia (low level of specific white cells), or thrombocytopenia (low platelet count)
Immunologic disorder	Positive test for anti–double-stranded DNA, anti-Sm, or antiphospholipid antibodies
Abnormal antinuclear antibodies	Positive antinuclear-antibody test

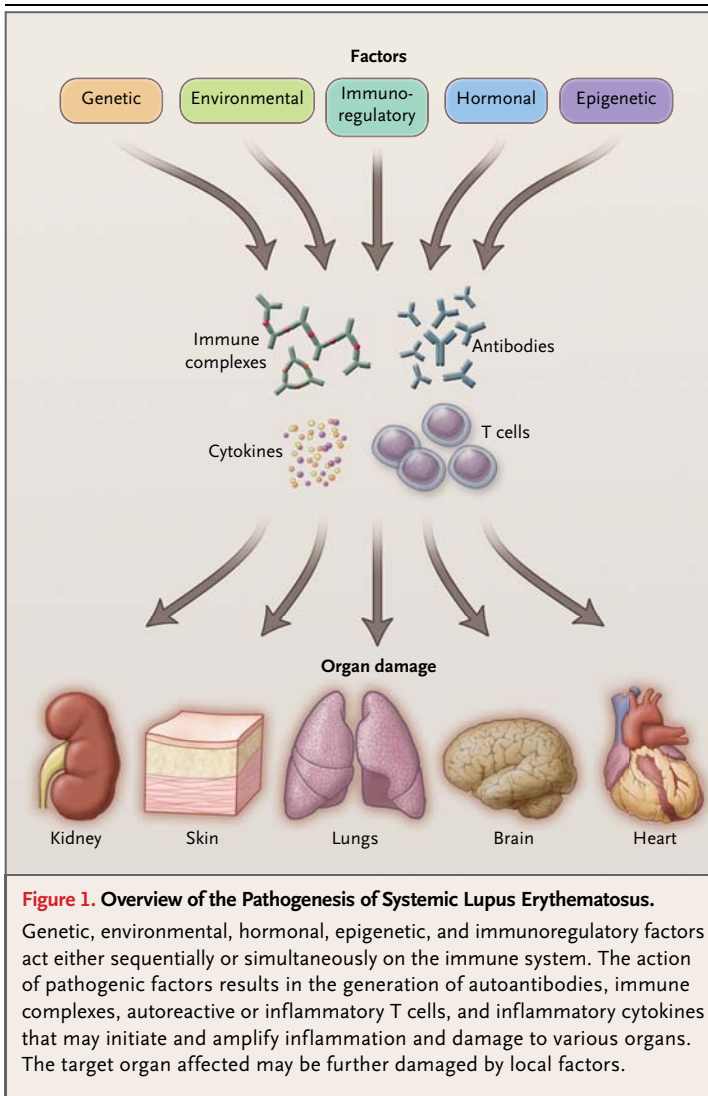
\* Four of the 11 criteria are needed for the formal diagnosis of SLE.

Trichostatin A, an inhibitor of histone deacetylase, normalizes the function of T cells from patients with SLE, and treatment of lupus-prone mice results in disease improvement.<sup>26</sup>

**IMMUNE CELLS AND CYTOKINES**

Antigen receptor–mediated activation is altered in T and B cells from patients with SLE, and early signaling events are amplified.<sup>27</sup> The T-cell receptor–CD3 complex, which recognizes and binds antigen and autoantigen and sends activation signals to the interior of the cell, is “rewired” in T cells, with the CD3- $\zeta$  chain replaced by the FcR- $\gamma$  common chain. In relaying the signal intracellularly, the spleen tyrosine kinase (Syk) is used rather than the canonical 70-kD  $\zeta$ -associated protein (ZAP-70).<sup>27</sup> Lipid rafts, cholesterol-rich scaffolds that contain signaling proteins on the surface membrane of cells, are present in aggregates that are metabolically active, and their inhibition in lupus-prone mice results in a change in disease expression<sup>28</sup> (Fig. 3).

Deficient production of interleukin-2 has been attributed to the binding of the transcriptional re-



pressor cyclic AMP response-element modulator  $\alpha$ , which is promoted by increased levels of calcium/calmodulin-dependent protein kinase IV (CaMK4),<sup>29</sup> and to diminished binding of the enhancer phosphorylated cyclic AMP response-element-binding protein, which is caused by the overexpressed phosphatase PP2Ac.<sup>30</sup> Limited amounts of interleukin-2, in turn, result in poor activity of cytotoxic T cells and thus an increased risk of infection, which is a major cause of illness and death in patients with SLE.<sup>27</sup> Lack of interleukin-2 also results in the suppression of activation-induced cell death and, therefore, increased longevity of autoreactive T cells in patients with SLE.<sup>27</sup>

Interleukin-17 is produced mainly by activated T cells and plays an important role in the immune response against certain bacteria and fungi.<sup>31</sup> A

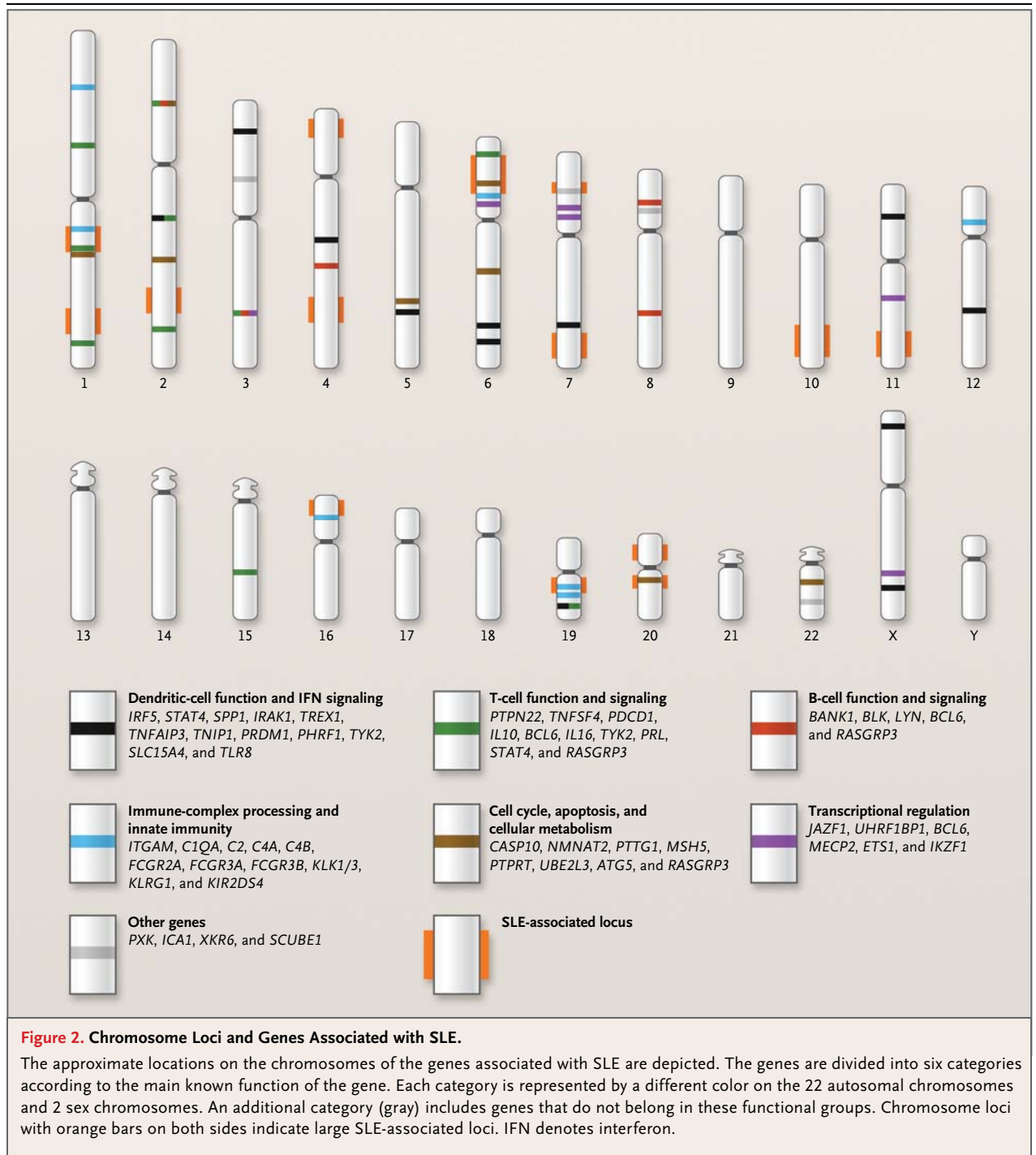
high percentage of CD4+ T cells and an increased number of blood CD3+CD4-CD8- T cells in these patients produce interleukin-17, and these cell types home to the kidney in patients with lupus nephritis.<sup>32</sup> Studies in lupus-prone mice support a role for interleukin-17 in the pathogenesis of SLE.<sup>33</sup>

The expression of the adhesion molecule CD44 is abnormally increased in T cells from patients with SLE.<sup>34</sup> In addition, such cells migrate at increased rates in response to the chemokine CXCL12, most likely because they express more CXCR4 receptors than T cells from healthy subjects, which enables them to migrate into inflamed organs.<sup>34,35</sup> The expression of CD44 variant 3 and CD44 variant 6 is increased in T cells from patients with SLE, and these cells infiltrate the kidneys in such patients.<sup>27</sup>

In active SLE, a marked disease activity-dependent reduction in the number of naive B cells is observed, and the number of plasma cells is increased in the peripheral blood.<sup>36</sup> All B-cell subgroups (B1 and B2 cells in both the follicular and marginal zones) contribute to the production of autoantibodies. B cells are central to the expression of the disease. In addition to producing autoantibodies, which mediate tissue damage (as described below), B cells process and present antigen and autoantigen to T cells and contribute to disease expression (at least in lupus-prone mice), even independently of their ability to produce antibodies.<sup>37</sup>

Compromise of tolerance checkpoints, along with other factors, may lead to increased production of autoantibodies.<sup>38</sup> The number of DNA-binding B cells (recognized with a peptide that looks in structure like DNA) is increased in antigen-exposed and antigen-unexposed B cells and correlates with disease activity.<sup>39</sup> Increased signaling of B-cell receptors<sup>40</sup> may be facilitated by limited Fc type II receptor-mediated suppression.<sup>41</sup> Germline variants of sialic acid acetyltransferase, an enzyme that limits signaling of B-lymphocyte antigen receptors, are linked to SLE and other autoimmune diseases; these variants have reduced activity and thus may contribute to increased B-cell signaling.<sup>42</sup> A variant of protein tyrosine phosphatase, nonreceptor type 22, that is associated with increased phosphatase activity is linked to autoimmunity,<sup>43</sup> and it has been proposed that by suppressing the signaling of B-cell receptors, the variant limits negative selection of autoreactive lymphocytes.

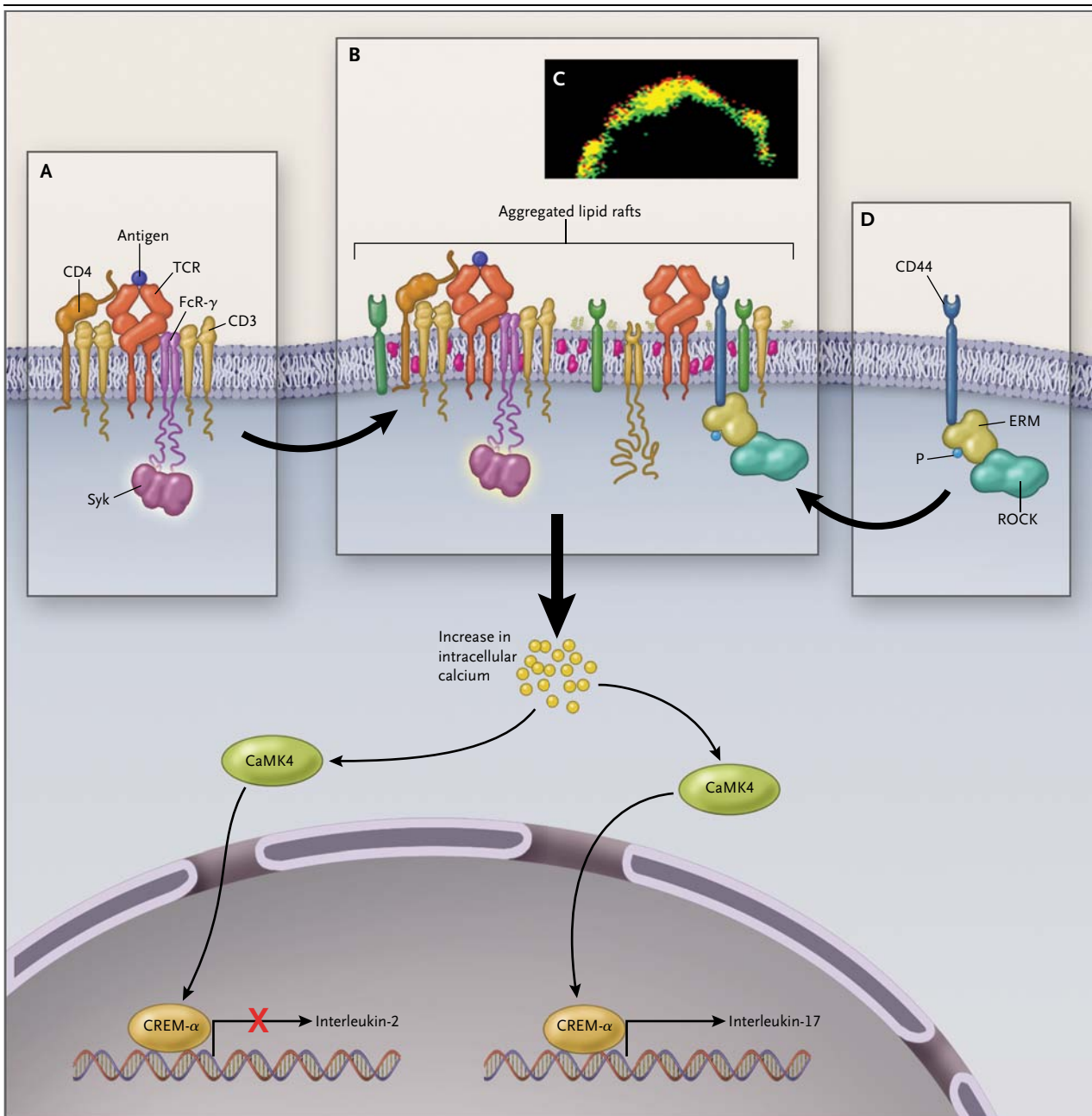
Antibody responses overall are lower than normal after immunization of patients with SLE



against tetanus toxoid or hemophilus influenza, but the majority of patients have protective responses. Low responses are associated with SLE itself and with immunosuppressive drug treatment.<sup>44</sup> Patients with SLE should always be vaccinated (but only with killed vaccines) to gain all possible protection against infections.

Interferon- $\alpha$ , CD40 ligand, free nucleosomes, and autoantibody–DNA complexes cause differentiation and activation of normal dendritic cells<sup>45–47</sup> and stimulate their cytokine production.<sup>27</sup> Dendritic cells may promote or suppress the immune response. Plasmacytoid dendritic cells secrete large amounts of type I interferon (interferon- $\alpha$ ) on viral





**Figure 3. Overview of T-Cell Early Signaling and Gene-Transcription Abnormalities in Patients with SLE.**

In SLE, the T-cell receptor (TCR) is “rewired” (Panel A). The place and function of the CD3- $\zeta$  chain are taken by the FcR- $\gamma$  chain, which uses spleen tyrosine kinase (Syk) to relay the signal that is initiated after the binding of antigen or autoantigen. Lipid rafts (Panels B and C), cholesterol-rich domains in which the TCR and important signal molecules converge, are aggregated and further contribute to abnormal signaling and, at least in mice, to disease expression. CD44 (Panel D), an adhesion molecule that facilitates homing of T cells to inflamed tissues (e.g., in the skin and kidney), is overexpressed in the T cells of patients with SLE and is associated with its signaling partner, ERM (ezrin, radixin, and moesin), with phosphorylation by Rho kinase (ROCK). Increased calcium concentrations after cross-linking of the TCR promote the translocation of calcium/calmodulin-dependent protein kinase IV (CaMK4) to the nucleus, where it facilitates the binding of the transcriptional repressor cyclic AMP response-element modulator  $\alpha$  (CREM- $\alpha$ ) to the promoter of interleukin-2 and suppresses its expression. In contrast, binding of CREM- $\alpha$  to the promoter of interleukin-17 enhances its activity. P denotes phosphate group PO<sub>4</sub>.

infection because of the activation of toll-like receptors 7 and 9,<sup>48</sup> and these cells are probably the main source of interferon- $\alpha$  in patients with SLE. Interferon-inducible genes are up-regulated in the majority of patients with SLE as compared with normal controls or patients with other rheumatic diseases.<sup>49,50</sup> The number of plasmacytoid dendritic cells is reduced in the peripheral blood, but they extensively infiltrate skin and renal lesions in patients with SLE.<sup>51</sup>

#### TISSUE INJURY IN SLE

Immune complexes are central players in the tissue injury in SLE. They are formed in large amounts as antinuclear antibodies bind to the abundant nuclear material in blood and tissues, and they are not cleared promptly because the Fc and complement receptors are numerically and functionally deficient.<sup>52</sup> In addition to activating complement, immune complexes may alter the function of Fc receptors. Defective clearance of immune complexes is genetically associated with polymorphisms in the Fc receptor genes<sup>53</sup> and the C3bi receptor gene (*ITGAM*).<sup>54</sup>

In the kidney, immune complexes accumulate in the subendothelial and mesangial areas first, followed by deposition in the basement membrane and subepithelial areas (Fig. 4). Immune complexes containing cationic anti-DNA antibodies<sup>55</sup> and antibodies against the collagen-like region of C1q<sup>56</sup> have an increased propensity to accumulate in the kidney. Anti-DNA and anti-nucleosome antibodies contribute to lupus nephritis,<sup>57</sup> and anti-chromatin-chromatin immune complexes are present in the mesangium of patients with lupus nephritis.<sup>58</sup> In addition, immune complexes may accumulate in the skin and the central nervous system. Immune complexes may bind to receptors expressed by tissue-specific cells and alter their function, but more important, the complexes cause an influx of inflammatory cells by activating the complement cascade.

Although the spectrum of autoantibody specificities in SLE is extensive, only a few have been shown to contribute to disease-related tissue injury. Anti-blood-cell antibodies that activate complement and cause cytopenias are typical. Anti-T-cell (CD3 and T-cell receptor) antibodies suppress interleukin-2 production.<sup>29</sup> Anti-Ro antibodies, which may alter the function of myocytes and cells of the

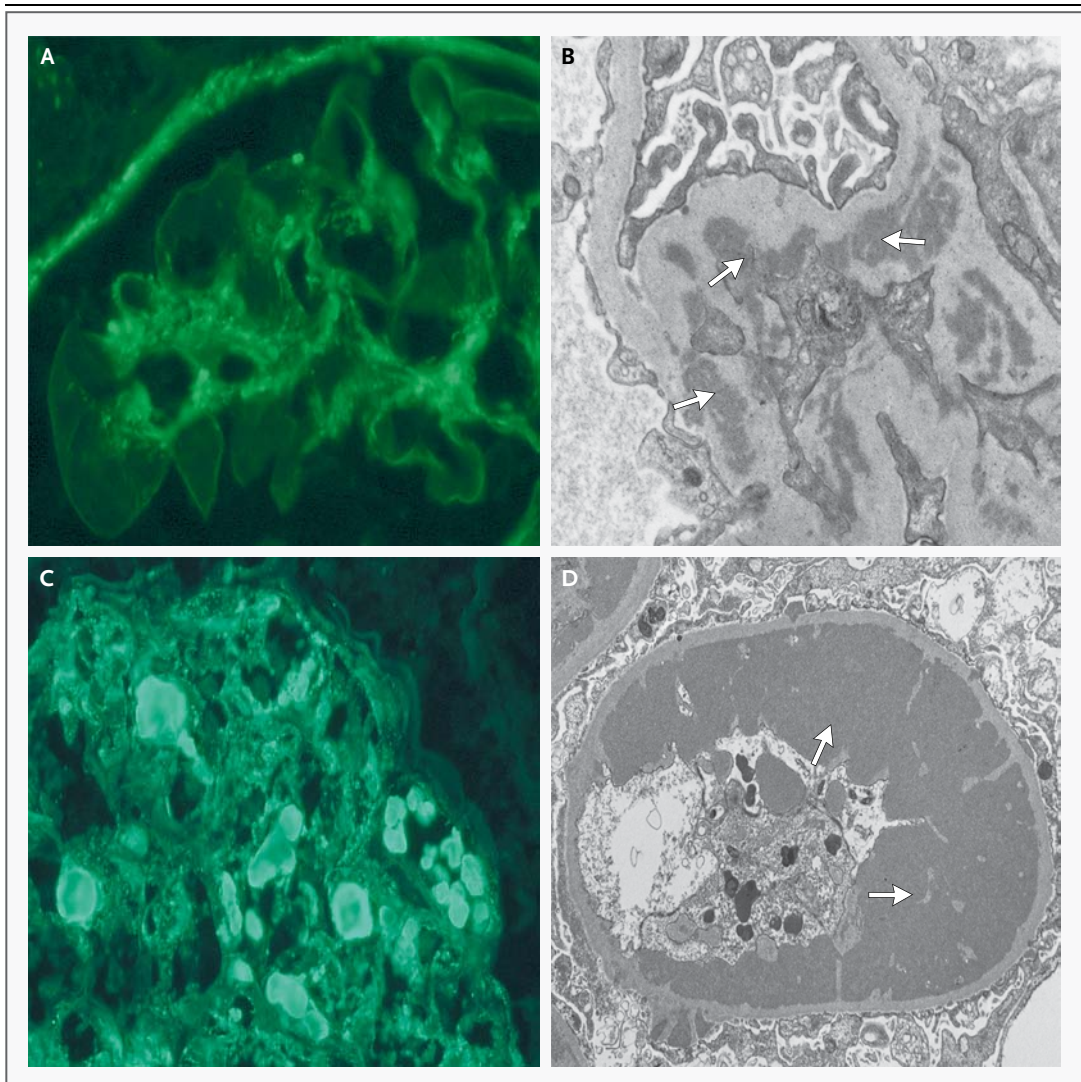
conduction system, have been linked to neonatal lupus and specifically to congenital heart block. The presence of anti-Ro antibodies calls for special fetal monitoring (neonatal lupus develops in only 2% of fetuses of mothers who are positive for such antibodies) and treatment.<sup>59</sup>

Some anti-DNA antibodies cross-react with *N*-methyl-D-aspartate receptors (NMDARs); these are widely distributed across the brain, with the highest density in the hippocampus and amygdala. Breach of the blood-brain barrier in animals enables these antibodies to bind to neuronal cells and destroy them. Anti-NMDAR antibodies in the cerebrospinal fluid and the brain in patients with SLE have been linked to neurocognitive defects.<sup>60</sup> Proinflammatory cytokines that are present in the cerebrospinal fluid of patients with SLE (interleukin-6, interferon- $\alpha$ , and interleukin-1) compromise the blood-brain barrier. Mice born to mothers with anti-NMDAR antibodies have cognitive defects through mechanisms that have not been fully defined.<sup>61</sup>

Some patients with SLE have antibodies against phospholipids and  $\beta_2$ -glycoprotein 1. The presence of such antibodies is linked to thrombotic events and fetal loss in mice and is known as the antiphospholipid syndrome.<sup>62</sup> Antiphospholipid antibodies interfere with the coagulation system (especially protein C) and the function of endothelial cells. These antibodies increase the expression of adhesion molecules on the surface of endothelial cells, induce the production of tissue factor, and thus promote the formation of thrombus.<sup>62</sup> Antiphospholipid antibodies also aggregate platelets. Fetal loss has been linked to the activation of complement by antiphospholipid antibodies that bind to placental trophoblast cells. Low doses of heparin (which has also been shown to inhibit complement activation) can reduce the risk of fetal loss in patients with the antiphospholipid syndrome.<sup>63</sup>

Certain naturally occurring antibodies and autoantibodies (against DNA, phospholipids, histones, and ribonucleoprotein) may bind to ischemic tissues, activate complement, and cause damage. Such experimental findings may explain why some patients with SLE have disease flares after they experience a stressful event.<sup>64</sup>

T cells infiltrate tissues, including the skin and the kidney, where they contribute to tissue damage. Peripheral-blood T cells from patients with



**Figure 4. Features of Lupus Nephritis on Immunofluorescence Staining and Transmission Electron Microscopy.**

The main elements in the expression of glomerular damage can be seen on immunofluorescence staining with anti-IgG antibodies and transmission electron microscopy. In Panel A, immunofluorescence staining shows Bowman's capsule and mesangial immune-complex deposition. Capillary walls are not stained. The transmission electron micrograph in Panel B shows extensive granular, electron-dense deposits (arrows) in the matrix of the mesangium. No deposits are seen in the capillary lumen (left). Overlying podocytes have intact foot processes. In Panel C, immunofluorescence staining shows confluent mesangial and endoluminal (hyaline thrombi) immune-complex deposition. Fine granules can be seen throughout the glomerulus. The transmission electron micrograph in Panel D shows a glomerular capillary with extensive subendothelial immune-complex deposition (arrows). Scattered small subepithelial deposits can also be seen. Such multisite deposition is typical of lupus nephritis.

SLE express adhesion molecules such as CD44 that may enable T cells to home inappropriately to tissues when CD44 is associated with its signaling partner, pERM (phosphorylated ezrin, radixin, and moesin). CD44+pERM+ cells are found in the kidneys of patients with SLE.<sup>34</sup> Many of these cells are CD3+CD4-CD8- and secrete interleukin-17,

which contributes to inflammation, particularly through the recruitment of polymorphonuclear cells.<sup>32</sup> Polymorphonuclear cells are readily recognized in renal-biopsy material from patients with lupus nephritis. B cells are also present, although it is not known whether these cells produce auto-antibodies.<sup>65</sup>



Tissue-specific cells contribute to disease expression, and their importance should not be underestimated. In the kidney, mesangial cells, interstitial cells, and podocytes acquire antigen-presenting properties and secrete proinflammatory cytokines when exposed to interferon- $\gamma$ . Mesangial cells from lupus-prone mice produce  $\alpha$ -actinin, which is targeted by anti-actinin antibodies and which strengthens the inflammatory response.<sup>66</sup> Kallikrein production seems to mitigate murine and human lupus nephritis, and kallikrein-gene polymorphisms and promoter-gene SNPs are associated with the development of nephritis in patients with SLE.<sup>67</sup>

In the skin, keratinocytes that are exposed to ultraviolet light become apoptotic and release nuclear material, which is not cleared efficiently in patients with SLE. This nuclear material may further stimulate the immune system. The clearance of nuclear material generated by the death of keratinocytes and other cells is mediated by serum amyloid P, c-Mer kinase, IgM, C1q, and DNase; a genetic deficiency of any of them in mice or humans leads invariably to SLE.<sup>7,68</sup> Patients with C1q deficiency, which is rare, are particularly photosensitive. The expression of additional organ-specific molecules is important in determining which organ or organs are damaged. Expression of tumor necrosis factor receptor 1 is needed for the expression of skin disease, whereas it provides protection against kidney inflammation.<sup>69</sup>

Atherosclerosis-attributed vascular events are significantly more frequent in patients with SLE than in matched healthy persons.<sup>70,71</sup> Several factors contribute to this increased frequency, including antibodies to lipoproteins, oxidized lipoproteins, hypertension, and the metabolic syndrome.<sup>72</sup> Endothelial cells may become injured because of immune complexes and inflammatory molecules.<sup>73</sup> Subsequently, they express adhesion molecules to attract lymphocytes and monocytes, which adhere to and infiltrate the subendothelial space or become detached. Increased numbers of endothelial cells are found in the blood of patients with SLE.<sup>74</sup>

#### GENE-EXPRESSION PATTERNS IN SLE

Peripheral-blood cells from children with SLE display a unique expression pattern of genes related to granulopoiesis and induced by interferon, and treatment with prednisone eliminates these characteristic gene-expression patterns.<sup>75</sup> Nevertheless,

more information is needed to establish the so-called interferon signature as a disease biomarker.<sup>50</sup> The expression profile of transcription factors in CD8+ T cells correlates with clinical patterns of disease.<sup>76</sup>

#### PROSPECTS FOR NEW THERAPEUTICS

Patients with SLE are treated with nonsteroidal antiinflammatory drugs, antimalarial agents, glucocorticoids, and immunosuppressive drugs, including cyclophosphamide, azathioprine, methotrexate, and mycophenolate mofetil (Table 2). The choice of the drug is determined largely by the severity of the disease and the function of the involved organ.

In addition to having antiinflammatory effects, inhibitors of cyclooxygenase-2 have been claimed to promote the death of autoreactive T cells.<sup>77</sup> The antimalarial agent hydroxychloroquine has therapeutic value and limited toxicity. It inhibits the function of toll-like receptors that contribute to autoimmunity.<sup>78</sup> Cyclophosphamide pulses (intravenous infusions every month or bimonthly at lower doses) are effective in the treatment of lupus nephritis, although there are serious potential side effects, including bone marrow suppression, infections, and gonadal suppression.<sup>79</sup> Mycophenolate mofetil has considerable therapeutic value with few side effects,<sup>80,81</sup> but its long-term effects with respect to the preservation of kidney function are unproven.<sup>82</sup>

B-lymphocyte stimulator (BLyS) is a cytokine that is involved in the survival of B cells, germinal-center formation, and T-cell-dependent and T-cell-independent immunoglobulin-class switching. It binds to the surface of B cells and acts with the B-cell receptor in signal transduction.<sup>83</sup> Studies in mice have shown a role of BLyS in the expression of lupus.<sup>83</sup> Blockade of BLyS<sup>84</sup> with an anti-BLyS antibody resulted in a small but significant beneficial clinical effect within the first year of treatment in patients with mild or moderate disease.<sup>85</sup> This antibody (belimumab) is approved by the Food and Drug Administration for use in the treatment of lupus.

Interleukin-6 promotes antibody production in humans and mice with lupus<sup>86</sup> and is present in the urine of patients with lupus nephritis.<sup>87</sup> A monoclonal antibody against the interleukin-6 receptor (tocilizumab) was judged to be promising in a phase 1 clinical trial. Complement activation



**Table 2. Treatment Approaches for SLE.\***

Aspirin†
Glucocorticoids†
Immunosuppressive agents
Cyclophosphamide
Methotrexate
Azathioprine
Mycophenolate mofetil
Modulation of B-cell function or numbers
Reestablishment of tolerance
B-cell depletion
B-cell–directed cytokines
Blockade of B-lymphocyte stimulator (belimumab)†
TACI–immune globulin (atacept)
Blockade of the interleukin-6 receptor (tocilizumab)
Interruption of T-cell–B-cell interaction
Blockade of CD40 ligand
CTLA4–immune globulin
Blockade of inducible costimulator
Reestablishment of tolerance in T cells
Autoantigen-derived peptides
Blockade of type I interferon
Inhibition of toll-like receptor
Hydroxychloroquine†
Hormone manipulation (dehydroepiandrosterone)
Modulation of cell signaling
Spleen tyrosine kinase (fostamatinib)
Janus kinase
Rho kinase
Calcium/calmodulin-dependent protein kinase IV
Calcineurin (dipyridamole)
Mammalian target of rapamycin (sirolimus)

\* CTLA4 denotes cytotoxic T-lymphocyte–associated antigen 4, and TACI transmembrane activator and calcium-modulator and cyclophilin-ligand interactor.

† These approaches have been approved by the Food and Drug Administration for use in patients with lupus.

is profoundly increased in patients with SLE, and inhibition of C5 with an antibody (eculizumab), which has proved efficacious in the treatment of paroxysmal nocturnal hemoglobinuria, is being considered.<sup>88</sup>

The proinflammatory cytokines interleukin-17 and interleukin-23 are important in the pathogenesis of nephritis in lupus-prone mice. Given that

interleukin-17–producing cells are found not only in the peripheral blood but also in the inflamed kidney in patients with SLE,<sup>32,33</sup> blockade of interleukin-17, interleukin-23, or both may warrant evaluation.

B-cell depletion in the treatment of autoimmune and rheumatoid arthritis has shown some clinical efficacy. A chimeric anti-CD20 antibody (rituximab) has shown initial promise in small studies and case series involving patients with SLE,<sup>89–91</sup> but a trial of rituximab in patients with moderate-to-severe SLE failed to reach its primary end points.<sup>92</sup> Thus, the role, if any, of B-cell depletion in the treatment of SLE is unclear. Such treatment may not come to fruition until we understand the short-term and long-term immune effects of B-cell depletion. For example, increased production of BlyS after B-cell depletion may counteract the expected clinical benefit. Rituximab plus belimumab may be a rational combination to test.

One approach to reestablish B-cell tolerance in patients with SLE involves the use of a compound that carries four short DNA pieces meant to promote capping and internalization of surface immunoglobulin, rendering B cells unable to recognize DNA. However, a clinical trial showed that the use of this compound was ineffective.<sup>93</sup> Restoration of T-cell tolerance with peptide components of putative autoantigens is being tested in clinical trials.<sup>94</sup>

Efforts to block the interaction between T and B cells have led to the use of a fusion molecule of cytotoxic T-lymphocyte–associated antigen 4 with immunoglobulin (abatacept), which in a phase 2 trial failed to meet set end points.<sup>95</sup> Inducible costimulator, a regulatory molecule, and its ligand, B7-related peptide 1, represent another costimulatory pair, and disruption of the interaction with a human antibody is currently in a phase 1 trial. In addition, the costimulatory pair CD40–CD40 ligand is important in the production of autoantibodies, but the use of antibodies to disrupt the interaction had considerable side effects in clinical trials.<sup>27</sup>

In developing antibody-based biologic therapies for SLE, the mechanism of action should be considered carefully. For example, complement levels are low in patients with severe disease, and the Fc portion of the antibody may need to be engineered to facilitate maximal complement activation. Certain Fc-receptor variants that are often

found in patients with SLE<sup>96</sup> do not allow sufficient binding of IgG subclasses, so the appropriate immunoglobulins may need to be selected or engineered.

Small-molecule inhibitors of kinases such as Syk and CaMK4 that are abnormally expressed in the immune cells of patients with SLE may present new therapeutic opportunities. Correction of the levels of these kinases in vitro in T cells from patients with SLE results in normalization of cell signaling and interleukin-2 production.<sup>27</sup> Inhibitors of either kinase have been shown to prevent or suppress disease in lupus-prone mice.<sup>97,98</sup> Inhibitors of the nuclear factor of activated T cells (NFAT), such as tacrolimus, may benefit patients with SLE, as should dipyridamole, which along with its antiplatelet function inhibits calcineurin-mediated NFAT activity.<sup>99</sup> The mammalian target of rapamycin (mTOR), which plays a role in several key metabolic pathways, is increased in T cells of patients with SLE, and treatment of cells with

rapamycin (i.e., sirolimus) corrects the signaling process.<sup>100</sup>

## SUMMARY

SLE is an autoimmune disease that predominantly affects women and typically has manifestations in multiple organs. Immune-system aberrations, as well as heritable, hormonal, and environmental factors, contribute to the expression of organ damage. Immune complexes, autoantibodies, autoreactive lymphocytes, dendritic cells, and local factors are all involved in clinical manifestations of SLE. Biologic therapies and small-molecule drugs that can correct the aberrant immune-cell function are being developed in the hope that they will be more effective and less toxic than current treatments.

Disclosure forms provided by the author are available with the full text of this article at NEJM.org.

## REFERENCES

- Duarte C, Couto M, Ines L, Liang MH. Epidemiology of systemic lupus erythematosus. In: Lahita RG, Tsokos G, Buyon J, Koike T, eds. *Systemic lupus erythematosus*. 5th ed. London: Elsevier, 2011:673-96.
- Tan EM, Cohen AS, Fries JF, et al. The 1982 revised criteria for the classification of systemic lupus erythematosus. *Arthritis Rheum* 1982;25:1271-7.
- Pons-Estel GJ, Alarcón GS, Scofield L, Reinlib L, Cooper GS. Understanding the epidemiology and progression of systemic lupus erythematosus. *Semin Arthritis Rheum* 2010;39:257-68.
- Moser KL, Kelly JA, Lessard CJ, Harley JB. Recent insights into the genetic basis of systemic lupus erythematosus. *Genes Immun* 2009;10:373-9.
- Tsokos GC, Kammer GM. Molecular aberrations in human systemic lupus erythematosus. *Mol Med Today* 2000;6:418-24.
- Roozendaal R, Carroll MC. Complement receptors CD21 and CD35 in humoral immunity. *Immunol Rev* 2007;219:157-66.
- Manderson AP, Botto M, Walport MJ. The role of complement in the development of systemic lupus erythematosus. *Annu Rev Immunol* 2004;22:431-56.
- Harley JB, Moser KL, Gaffney PM, Behrens TW. The genetics of human systemic lupus erythematosus. *Curr Opin Immunol* 1998;10:690-6.
- Gorman CL, Russell AI, Zhang Z, Cunninghame GD, Cope AP, Vyse TJ. Polymorphisms in the CD3Z gene influence TCRzeta expression in systemic lupus erythematosus patients and healthy controls. *J Immunol* 2008;180:1060-70.
- Tan W, Sunahori K, Zhao J, et al. Association of PPP2CA polymorphisms with SLE susceptibility in multiple ethnic groups. *Arthritis Rheum* 2011 May 16 (Epub ahead of print).
- Gateva V, Sandling JK, Hom G et al. A large-scale replication study identifies TNIP1, PRDM1, JAZF1, UHRF1BP1 and IL10 as risk loci for systemic lupus erythematosus. *Nat Genet* 2009;41:1228-33.
- Manolio TA, Collins FS, Cox NJ, et al. Finding the missing heritability of complex diseases. *Nature* 2009;461:747-53.
- Blanchong CA, Chung EK, Rupert KL, et al. Genetic, structural and functional diversities of human complement components C4A and C4B and their mouse homologues, Slp and C4. *Int Immunopharmacol* 2001;1:365-92.
- Niederer HA, Clatworthy MR, Willcocks LC, Smith KG. FcγRIIB, FcγRIIIB, and systemic lupus erythematosus. *Ann N Y Acad Sci* 2010;1183:69-88.
- Kelley J, Johnson MR, Alarcón GS, Kimberly RP, Edberg JC. Variation in the relative copy number of the TLR7 gene in patients with systemic lupus erythematosus and healthy control subjects. *Arthritis Rheum* 2007;56:3375-8.
- Ballestar E, Esteller M, Richardson BC. The epigenetic face of systemic lupus erythematosus. *J Immunol* 2006;176:7143-7.
- Simard JF, Costenbader KH, Liang MH, Karlson EW, Mittleman MA. Exposure to maternal smoking and incident SLE in a prospective cohort study. *Lupus* 2009;18:431-5.
- Tsokos GC, Magrath IT, Balow JE. Epstein-Barr virus induces normal B cell responses but defective suppressor T cell responses in patients with systemic lupus erythematosus. *J Immunol* 1983;131:1797-801.
- Kang I, Quan T, Nolasco H, et al. Defective control of latent Epstein-Barr virus infection in systemic lupus erythematosus. *J Immunol* 2004;172:1287-94.
- Poole BD, Scofield RH, Harley JB, James JA. Epstein-Barr virus and molecular mimicry in systemic lupus erythematosus. *Autoimmunity* 2006;39:63-70.
- Smith-Bouvier DL, Divekar AA, Sasidhar M, et al. A role for sex chromosome complement in the female bias in autoimmune disease. *J Exp Med* 2008;205:1099-108.
- Urowitz MB, Gladman DD, Farewell VT, Stewart J, McDonald J. Lupus and pregnancy studies. *Arthritis Rheum* 1993;36:1392-7.
- Doria A, Cutolo M, Ghirardello A, et al. Steroid hormones and disease activity during pregnancy in systemic lupus erythematosus. *Arthritis Rheum* 2002;47:202-9.
- Chang DM, Lan JL, Lin HY, Luo SF. Dehydroepiandrosterone treatment of women with mild-to-moderate systemic lupus erythematosus: a multicenter randomized, double-blind, placebo-controlled trial. *Arthritis Rheum* 2002;46:2924-7.

25. Tenbrock K, Juang YT, Leukert N, Roth J, Tsokos GC. The transcriptional repressor cAMP response element modulator alpha interacts with histone deacetylase 1 to repress promoter activity. *J Immunol* 2006;177:6159-64.
26. Mishra N, Reilly CM, Brown DR, Ruiz P, Gilkeson GS. Histone deacetylase inhibitors modulate renal disease in the MRL-*lpr/lpr* mouse. *J Clin Invest* 2003;111:539-52.
27. Crispin JC, Liou SN, Kis-Toth K, et al. Pathogenesis of human systemic lupus erythematosus: recent advances. *Trends Mol Med* 2010;16:47-57.
28. Deng GM, Tsokos GC. Cholera toxin B accelerates disease progression in lupus-prone mice by promoting lipid raft aggregation. *J Immunol* 2008;181:4019-26.
29. Juang YT, Wang Y, Solomou EE, et al. Systemic lupus erythematosus serum IgG increases CREM binding to the IL-2 promoter and suppresses IL-2 production through CaMKIV. *J Clin Invest* 2005;115:996-1005.
30. Katsiari CG, Kyttaris VC, Juang YT, Tsokos GC. Protein phosphatase 2A is a negative regulator of IL-2 production in patients with systemic lupus erythematosus. *J Clin Invest* 2005;115:3193-204.
31. Korn T, Bettelli E, Oukka M, Kuchroo VK. IL-17 and Th17 cells. *Annu Rev Immunol* 2009;27:485-517.
32. Crispin JC, Oukka M, Bayliss G, et al. Expanded double negative T cells in patients with systemic lupus erythematosus produce IL-17 and infiltrate the kidneys. *J Immunol* 2008;181:8761-6.
33. Zhang Z, Kyttaris VC, Tsokos GC. The role of IL-23/IL-17 axis in lupus nephritis. *J Immunol* 2009;183:3160-9.
34. Li Y, Harada T, Juang YT, et al. Phosphorylated ERM is responsible for increased T cell polarization, adhesion, and migration in patients with systemic lupus erythematosus. *J Immunol* 2007;178:1938-47.
35. Estess P, DeGrendele HC, Pascual V, Siegelman MH. Functional activation of lymphocyte CD44 in peripheral blood is a marker of autoimmune disease activity. *J Clin Invest* 1998;102:1173-82.
36. Odendahl M, Jacobi A, Hansen A, et al. Disturbed peripheral B lymphocyte homeostasis in systemic lupus erythematosus. *J Immunol* 2000;165:5970-9.
37. Chan OT, Hannum LG, Haberman AM, Madaio MP, Shlomchik MJ. A novel mouse with B cells but lacking serum antibody reveals an antibody-independent role for B cells in murine lupus. *J Exp Med* 1999;189:1639-48.
38. Yurasov S, Tiller T, Tsuiji M, et al. Persistent expression of autoantibodies in SLE patients in remission. *J Exp Med* 2006;203:2255-61.
39. Jacobi AM, Zhang J, Mackay M, Aranow C, Diamond B. Phenotypic characterization of autoreactive B cells — checkpoints of B cell tolerance in patients with systemic lupus erythematosus. *PLoS ONE* 2009;4(6):e5776.
40. Liou SN, Kovacs B, Dennis G, Kammer GM, Tsokos GC. B cells from patients with systemic lupus erythematosus display abnormal antigen receptor-mediated early signal transduction events. *J Clin Invest* 1996;98:2549-57.
41. Mackay M, Stanevsky A, Wang T, et al. Selective dysregulation of the FcγRIIB receptor on memory B cells in SLE. *J Exp Med* 2006;203:2157-64.
42. Surolia I, Pirnie SP, Chellappa V, et al. Functionally defective germline variants of sialic acid acetyltransferase in autoimmunity. *Nature* 2010;466:243-7.
43. Vang T, Congia M, Macis MD, et al. Autoimmune-associated lymphoid tyrosine phosphatase is a gain-of-function variant. *Nat Genet* 2005;37:1317-9.
44. Battafarano DF, Battafarano NJ, Larsen L, et al. Antigen-specific antibody responses in lupus patients following immunization. *Arthritis Rheum* 1998;41:1828-34.
45. Blanco P, Palucka AK, Gill M, Pascual V, Banchereau J. Induction of dendritic cell differentiation by IFN-α in systemic lupus erythematosus. *Science* 2001;294:1540-3.
46. Decker P, Singh-Jasuja H, Haager S, Kotter I, Rammensee HG. Nucleosome, the main autoantigen in systemic lupus erythematosus, induces direct dendritic cell activation via a MyD88-independent pathway: consequences on inflammation. *J Immunol* 2005;174:3326-34.
47. Means TK, Latz E, Hayashi F, Murali MR, Golenbock DT, Luster AD. Human lupus autoantibody-DNA complexes activate DCs through cooperation of CD32 and TLR9. *J Clin Invest* 2005;115:407-17.
48. Liu YJ. IPC: professional type 1 interferon-producing cells and plasmacytoid dendritic cell precursors. *Annu Rev Immunol* 2005;23:275-306.
49. Feng X, Wu H, Grossman JM, et al. Association of increased interferon-inducible gene expression with disease activity and lupus nephritis in patients with systemic lupus erythematosus. *Arthritis Rheum* 2006;54:2951-62.
50. Crow MK. Type I interferon in systemic lupus erythematosus. *Curr Top Microbiol Immunol* 2007;316:359-86.
51. Farkas L, Beiske K, Lund-Johansen F, Brandtzaeg P, Jahnsen FL. Plasmacytoid dendritic cells (natural interferon-α/β-producing cells) accumulate in cutaneous lupus erythematosus lesions. *Am J Pathol* 2001;159:237-43.
52. Kimberly RP. Immune complexes in the rheumatic diseases. *Rheum Dis Clin North Am* 1987;13:583-96.
53. Li X, Ptacek TS, Brown EE, Edberg JC. Fcγ receptors: structure, function and role as genetic risk factors in SLE. *Genes Immun* 2009;10:380-9.
54. Hom G, Graham RR, Modrek B, et al. Association of systemic lupus erythematosus with *C8orf13-BLK* and *ITGAM-ITGAX*. *N Engl J Med* 2008;358:900-9.
55. Shivakumar S, Tsokos GC, Datta SK. T cell receptor α/β expressing double-negative (CD4-/CD8-) and CD4+ T helper cells in humans augment the production of pathogenic anti-DNA autoantibodies associated with lupus nephritis. *J Immunol* 1989;143:103-12.
56. Leijh PC, van den Barselaar MT, van Zwet TL, Daha MR, van Furth R. Requirement of extracellular complement and immunoglobulin for intracellular killing of microorganisms by human monocytes. *J Clin Invest* 1979;63:772-84.
57. Manson JJ, Ma A, Rogers P, et al. Relationship between anti-dsDNA, anti-nucleosome and anti-α-actinin antibodies and markers of renal disease in patients with lupus nephritis: a prospective longitudinal study. *Arthritis Res Ther* 2009;11:R154.
58. Hedberg A, Mortensen ES, Rekvig OP. Chromatin as a target antigen in human and murine lupus nephritis. *Arthritis Res Ther* 2011;13:214.
59. Brucato A, Cimaz R, Caporali R, Ramioli V, Buyon J. Pregnancy outcomes in patients with autoimmune diseases and anti-Ro/SSA antibodies. *Clin Rev Allergy Immunol* 2011;40:27-41.
60. Kowal C, Degiorgio LA, Lee JY, et al. Human lupus autoantibodies against NMDA receptors mediate cognitive impairment. *Proc Natl Acad Sci U S A* 2006;103:19854-9.
61. Lee JY, Huerta PT, Zhang J, et al. Neurotoxic autoantibodies mediate congenital cortical impairment of offspring in maternal lupus. *Nat Med* 2009;15:91-6.
62. Ruiz-Irastorza G, Crowther M, Branch W, Khamashta MA. Antiphospholipid syndrome. *Lancet* 2010;376:1498-509.
63. Girardi G, Redecha P, Salmon JE. Heparin prevents antiphospholipid antibody-induced fetal loss by inhibiting complement activation. *Nat Med* 2004;10:1222-6.
64. Tsokos GC, Fleming SD. Autoimmunity, complement activation, tissue injury and reciprocal effects. *Curr Dir Autoimmun* 2004;7:149-64.
65. Chang A, Henderson SG, Brandt D, et al. In situ B cell-mediated immune responses and tubulointerstitial inflammation in human lupus nephritis. *J Immunol* 2011;186:1849-60.
66. Renaudineau Y, Deocharan B, Jousse S, Renaudineau E, Putterman C, Youinou P. Anti-α-actinin antibodies: a new marker of lupus nephritis. *Autoimmun Rev* 2007;6:464-8.
67. Liu K, Li QZ, Delgado-Vega AM, et al. Kallikrein genes are associated with lu-

- pus and glomerular basement membrane-specific antibody-induced nephritis in mice and humans. *J Clin Invest* 2009;119:911-23.
68. Cohen PL, Caricchio R. Genetic models for the clearance of apoptotic cells. *Rheum Dis Clin North Am* 2004;30:473-86.
69. Deng GM, Liu L, Kytтары VC, Tsokos GC. Lupus serum IgG induces skin inflammation through the TNFR1 signaling pathway. *J Immunol* 2010;184:7154-61.
70. Urowitz MB, Gladman D, Ibanez D, et al. Atherosclerotic vascular events in a multinational inception cohort of systemic lupus erythematosus. *Arthritis Care Res (Hoboken)* 2010;62:881-7.
71. Urowitz MB, Gladman D, Ibanez D, et al. Clinical manifestations and coronary artery disease risk factors at diagnosis of systemic lupus erythematosus: data from an international inception cohort. *Lupus* 2007;16:731-5.
72. Valdivielso P, Gómez-Doblas JJ, Macias M, et al. Lupus-associated endothelial dysfunction, disease activity and arteriosclerosis. *Clin Exp Rheumatol* 2008;26:827-33.
73. Mayadas TN, Tsokos GC, Tsuboi N. Mechanisms of immune complex-mediated neutrophil recruitment and tissue injury. *Circulation* 2009;120:2012-24.
74. Rajagopalan S, Somers EC, Brook RD, et al. Endothelial cell apoptosis in systemic lupus erythematosus: a common pathway for abnormal vascular function and thrombosis propensity. *Blood* 2004;103:3677-83.
75. Bennett L, Palucka AK, Arce E, et al. Interferon and granulopoiesis signatures in systemic lupus erythematosus blood. *J Exp Med* 2003;197:711-23.
76. Juang YT, Peoples C, Kafri R, et al. A systemic lupus erythematosus gene expression array in disease diagnosis and classification: a preliminary report. *Lupus* 2011;20:243-9.
77. Xu L, Zhang L, Yi Y, Kang HK, Datta SK. Human lupus T cells resist inactivation and escape death by upregulating COX-2. *Nat Med* 2004;10:411-5.
78. Sun S, Rao NL, Venable J, Thurmond R, Karlsson L. TLR7/9 antagonists as therapeutics for immune-mediated inflammatory disorders. *Inflamm Allergy Drug Targets* 2007;6:223-35.
79. Illei GG, Austin HA, Crane M, et al. Combination therapy with pulse cyclophosphamide plus pulse methylprednisolone improves long-term renal outcome without adding toxicity in patients with lupus nephritis. *Ann Intern Med* 2001;135:248-57.
80. Radhakrishnan J, Moutzouris DA, Ginzler EM, Solomons N, Siempos II, Appel GB. Mycophenolate mofetil and intravenous cyclophosphamide are similar as induction therapy for class V lupus nephritis. *Kidney Int* 2010;77:152-60.
81. Contreras G, Pardo V, LeClercq B, et al. Sequential therapies for proliferative lupus nephritis. *N Engl J Med* 2004;350:971-80.
82. Boumpas DT, Bertias GK, Balow JE. A decade of mycophenolate mofetil for lupus nephritis: is the glass half-empty or half-full? *Ann Rheum Dis* 2010;69:2059-61.
83. Davidson A. Targeting BAFF in autoimmunity. *Curr Opin Immunol* 2010;22:732-9.
84. Moore PA, Belvedere O, Orr A, et al. BlyS: member of the tumor necrosis factor family and B lymphocyte stimulator. *Science* 1999;285:260-3.
85. Navarra SV, Guzmán RM, Gallacher AE, et al. Efficacy and safety of belimumab in patients with active systemic lupus erythematosus: a randomised, placebo-controlled, phase 3 trial. *Lancet* 2011;377:721-31.
86. Kishimoto T, Hirano T. Molecular regulation of B lymphocyte response. *Annu Rev Immunol* 1988;6:485-512.
87. Tsai CY, Wu TH, Yu CL, Lu JY, Tsai YY. Increased excretions of beta2-microglobulin, IL-6, and IL-8 and decreased excretion of Tamm-Horsfall glycoprotein in urine of patients with active lupus nephritis. *Nephron* 2000;85:207-14.
88. Brodsky RA. Advances in the diagnosis and therapy of paroxysmal nocturnal hemoglobinuria. *Blood Rev* 2008;22:65-74.
89. Looney RJ, Anolik JH, Campbell D, et al. B cell depletion as a novel treatment for systemic lupus erythematosus: a phase I/II dose-escalation trial of rituximab. *Arthritis Rheum* 2004;50:2580-9.
90. Ramos-Casals M, Soto MJ, Cuadrado MJ, Khamashta MA. Rituximab in systemic lupus erythematosus: a systematic review of off-label use in 188 cases. *Lupus* 2009;18:767-76.
91. Lu TY, Ng KP, Cambridge G, et al. A retrospective seven-year analysis of the use of B cell depletion therapy in systemic lupus erythematosus at University College London Hospital: the first fifty patients. *Arthritis Rheum* 2009;61:482-7.
92. Merrill JT, Neuwelt CM, Wallace DJ, et al. Efficacy and safety of rituximab in moderately-to-severely active systemic lupus erythematosus: the randomized, double-blind, phase II/III systemic lupus erythematosus evaluation of rituximab trial. *Arthritis Rheum* 2010;62:222-33.
93. Alarcón-Segovia D, Tumlin JA, Furie RA, et al. LJP 394 for the prevention of renal flare in patients with systemic lupus erythematosus: results from a randomized, double-blind, placebo-controlled study. *Arthritis Rheum* 2003;48:442-54.
94. Hahn BH, Ebling F, Singh RR, Singh RP, Karpouzas G, La Cava A. Cellular and molecular mechanisms of regulation of autoantibody production in lupus. *Ann NY Acad Sci* 2005;1051:433-41.
95. Merrill JT, Burgos-Vargas R, Westhovens R, et al. The efficacy and safety of abatacept in patients with non-life-threatening manifestations of systemic lupus erythematosus: results of a twelve-month, multicenter, exploratory, phase IIb, randomized, double-blind, placebo-controlled trial. *Arthritis Rheum* 2010;62:3077-87.
96. Su K, Yang H, Li X, et al. Expression profile of FcγRIIb on leukocytes and its dysregulation in systemic lupus erythematosus. *J Immunol* 2007;178:3272-80.
97. Ichinose K, Juang YT, Crispin JC, Kis-Toth K, Tsokos GC. Suppression of autoimmunity and organ pathology in lupus-prone mice upon inhibition of calcium/calmodulin-dependent protein kinase type IV. *Arthritis Rheum* 2011;63:523-9.
98. Deng GM, Liu L, Bahjat FR, Pine PR, Tsokos GC. Suppression of skin and kidney disease by inhibition of spleen tyrosine kinase in lupus-prone mice. *Arthritis Rheum* 2010;62:2086-92.
99. Kytтары VC, Zhang Z, Kampagianni O, Tsokos GC. Calcium signaling in systemic lupus erythematosus T cells: a treatment target. *Arthritis Rheum* 2011;63:2058-66.
100. Fernandez DR, Telarico T, Bonilla E, et al. Activation of mammalian target of rapamycin controls the loss of TCRzeta in lupus T cells through HRES-1/Rab4-regulated lysosomal degradation. *J Immunol* 2009;182:2063-73.

Copyright © 2011 Massachusetts Medical Society.

MY NEJM IN THE JOURNAL ONLINE

Individual subscribers can store articles and searches using a feature on the *Journal's* Web site ([NEJM.org](http://NEJM.org)) called "My NEJM." Each article and search result links to this feature. Users can create personal folders and move articles into them for convenient retrieval later.