

Division of Gastroenterology, Hepatology and Nutrition

Research

Research

Matthew Cave, M.D.

Cave Research **Industry Sponsored Clinical Trials**

- **Merck** (hepatitis C protease inhibitor)
- **Intercept** (PBC FXR agonist)
- **Sucampo** (Wo, cytokines in motility disorder)

Cave Research ***Liver Research Opportunities***

- Occupational/Environmental Liver Disease
- Alcoholic Liver Disease
- Industry Sponsored Clinical Trials

Cave Research ***Alcoholic Liver Disease***

- **Zinc supplementation for alcoholic cirrhosis.** K23AA18399-01A. \$990,436.
- **Epigenetic mechanisms of ethanol-induced immune suppression (Shirish Barve).** National Institutes of Health Extramural Loan Repayment Program for Clinical Research (NIAAA).

Cave Research ***Industry Sponsored Clinical Trials***

- **Merck** (hepatitis C protease inhibitor)
- **Intercept** (PBC FXR agonist)
- **Sucampo** (Wo, cytokines in motility disorder)

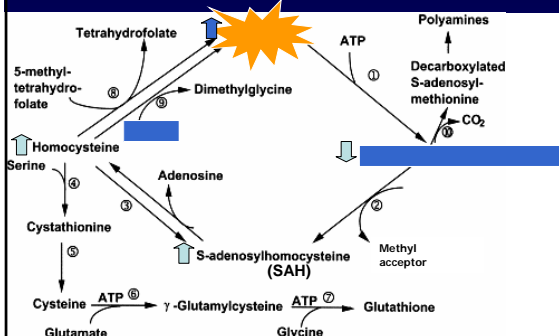
Cave Research Occupational/Environmental Liver Disease

- **Hepatic hemangiosarcoma biomarkers:** Rubbertown workers. UofL/Commonwealth of Kentucky CTSPGP advanced Award. \$98,007.
- **PCB's and organochlorine pesticides in obesity, diabetes, and NAFLD:** Mouse and cell culture. NCRR 5P20RR024489-02. \$405,404.
- **Identification (rubbertown workers) and mechanisms (mitochondrial toxicity / necrosis) of toxicant-associated steatohepatitis (TASH)**
- **Environmental liver disease (NHANES).**

Research

Craig McClain, M.D.

McClain Research Abnormal methionine metabolism in liver disease



McClain Research Human NIH Trials

1. SAME therapy ALD
2. SAME therapy NASH
3. Biochemical profile NASH
4. Cytokine response NASH
5. Cytokine/Trental Rx in ALD

McClain Research Animal Studies

1. Obesity NAFLD
2. Drug therapy NAFLD/ASH

Article/Chapters

1. Nutrition Liver Disease
2. Therapy for Alcoholic Hepatitis
3. HAART Hepatotoxicity

Research

Richard Redinger, M.D.

Redinger Research

- Publications in preparation
 - Cholesterol catabolism – advances in its understanding
 - The conundrum of common but complex polygenesis obesity

Research

John Wo, M.D.

Wo Research *Investigator-Initiated Trials*

- Gastroparesis
 - Idiopathic gastroparesis registry to define severity, treatment response and prognosis using a predominant-symptoms classification
 - Underlying causes of vomiting-predominant symptoms of unclear etiology
 - Domperidone

Wo Research *Investigator-Initiated Trials*

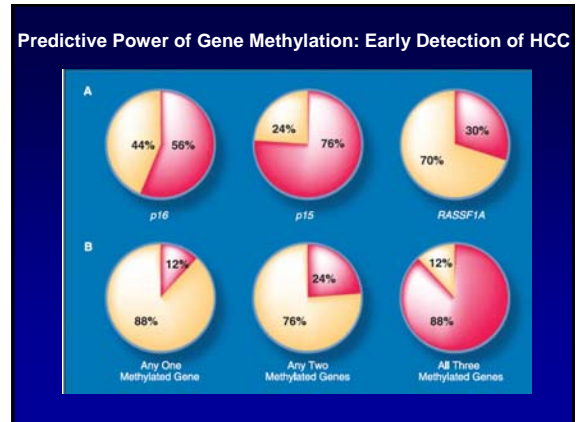
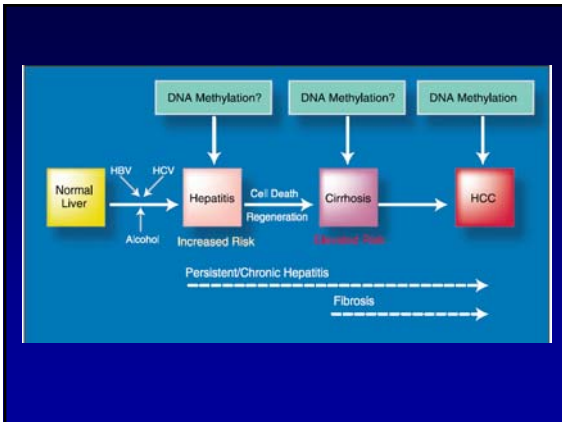
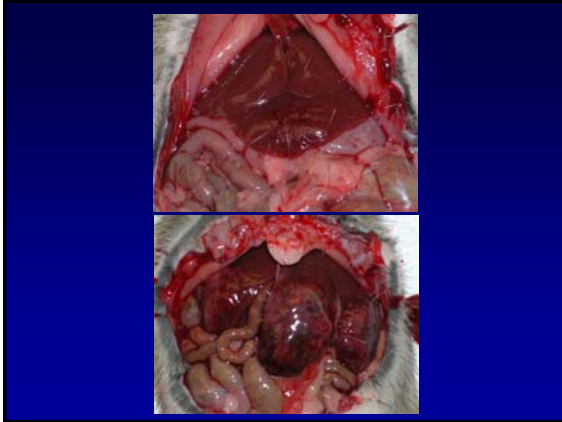
- High Resolution Esophageal Manometry
 - Correlation with symptoms
- Barrett's Esophagus
 - Registry, Biorepository
 - Evaluation of curcumin in patients with dysplastic Barrett's esophagus

Wo Research *Industry-Sponsored Trials*

- Diarrhea-predominant IBS with *K* opioid agonist
- Prevention of diverticulitis recurrence with 5-ASA

Research

Shirish Barve, PhD



Research

Tad Dryden, MD, MSPH, MSc

Novel Endoscopic Overtube

- Currently undergoing development of prototype
- Animal trial anticipated in 2-3 months
- Will need assistance with recording, analysis, writing of abstract/manuscript
- Assistance with regulatory paperwork

Novel Endoscopic Bariatric Device

- Will begin work on prototype in 2-3 months
- Funded for development of prototype
- Funded for acute animal trial
- Will need assistance with development, animal trial, analysis, abstract/manuscript production

Anti-TNF Therapy to Reduce Colon Tumor Formation

- Animal study using AOM/DSS in WT animals
- Animals regularly treated with anti-TNF antibody during course of inflammation
- Undergo periodic endoscopy
- Analyze for macrophage phenotype, angiogenesis markers
- Will need assistance with any aspect

Adipose-Derived Mesenchymal Stem Cells for Fistulizing CD

- Active IACUC
- Currently evaluating stem cell infiltration into matrix plug vs electrospun fibrinogen
- Anticipate animal trial within 3-4 months
- Will need assistance with data collection, analysis, abstract/manuscript preparation

Industry Sponsored Trials

- Vedolizumab for moderate to severe ulcerative colitis
- Vedolizumab for moderate to severe Crohn's disease

Investigator Initiated Trials

- Green tea polyphenol extract in mild to moderate ulcerative colitis

Research Resources

- CREST program
 - <http://louisville.edu/sphis/>
 - <http://louisville.edu/sphis/documents-and-pdfs/UofL%20CREST%20Student%20Handbook%20-July%202009.pdf>
- Division of Infectious Disease Research Program
 - http://www.iduofl.us/index.php?option=com_ocman&Itemid=87

Research Requirements

- BRAAN
 - <https://braanprod.louisville.edu/default.aspx>
 - COI
- HIPAA
 - <http://security.louisville.edu/training/HIPAA/logon.html>
- CITII
 - <http://louisville.edu/research/humansubjects/training/human-subjects-training-citi.html>

Research Requirements

- Animal Safety
- Chemical and Radiologic Safety
- Blood Born Pathogens