

UofL Healthcare Outpatient Center (HCOC)
401 E. Chestnut Street, Suite 170
Louisville, KY 40202

www.uoflphysicians.com
www.familymedicine.louisville.edu
www.polypharmacyinitiative.com

Appointments 502-588-4271

Fax 502-588-4280

UofL Geriatrics Academic Office 502-588-4260

UofLGeriatrics@louisville.edu

Grand Opening at the UofL Health Care Outpatient Center

The Grand Opening and ribbon cutting ceremony for our new office was held on May 15. We are excited to be in the UofL Health Care Outpatient Center. The office was designed specifically for geriatric care. Throughout the clinical space we have increased the width of our hallways to accommodate traffic flow, wheelchair turns, and patients that have caregivers with them. We have also lined our hallways with handrails for patients to hold on to as they walk between rooms. Additionally we have increased the width of doors on the bathroom and exam rooms to accommodate for wheelchairs.

The choice of flooring with a medium color and a matte, non-slip finish office reduces glare and lessens the risk of falls within the practice.

We have placed power hi/low exam tables in each exam room, side chairs with high arms to aid in sitting and in rising from the chair, and have provided curtains for more privacy.

We added a Medication Management/Resource Room. In this space, the PharmD meets with patients and their families to review medications. Also, our Social Worker meets with patients in this room to help meet their psychosocial needs. We have a library in this room for patient and families to access for resources. In this room, our Psychologist meets with patients for neuropsychology assessment and counseling.

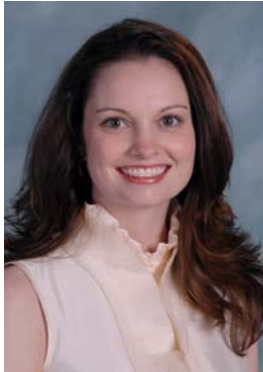
Parking is conveniently located across the street with access to the building by an overhead walkway. Patient drop off and wheelchair transfers are available at the rear entrance.



UofL Health Care Outpatient Center | 401 E. Chestnut St. , Suite 170 | Louisville, KY 40202 | 502-588-4271 | UofLGeriatrics@louisville.edu

Geriatrics is excited to announce the addition of a new faculty member

Ronna Compton, DO



Dr. Ronna Compton will return to UofL Geriatrics as a new faculty member in July 2012. Dr. Compton graduated from Virginia College of Osteopathic Medicine in Blacksburg, VA. She did her residency training with the University of Louisville Family Medicine Program, and completed the Geriatric Medicine Fellowship at UofL in 2011.

Welcome to our new Social Worker

Brenda Purser, MSSW, CSW



Brenda B. Purser, MSSW, CSW, is a graduate of University of Louisville Kent School of Social Work. With experience in medical social work and aging, she provides support, community referrals, advance care planning, and serves as facilitator for the dementia caregiver support group. She works part time in our office and is available by phone at 502-588-4238 on Monday, Tuesday, Wednesday afternoons, and on Thursday and Friday mornings. Please call her if you have any concerns or questions.

Caregiver Support Group

UofL Geriatrics & Alzheimer's Association Caregiver Support Group meets at 1:00 PM on the 3rd Monday of every month in our conference room at the UofL Health Care Outpatient Center (HCOC). The next meeting will be on June 18.

Future meetings will be on:

July 16	October 15
August 20	November 19
September 17	December 17

Everyone is welcome — all family members and caregivers. If you'd like more information, please call Brenda Purser, 502-588-4238, or email us at UofLGeriatrics@louisville.edu.

UofL Health Care Outpatient Center | 401 E. Chestnut St. , Suite 170 | Louisville, KY 40202 | 502-588-4271 | UofLGeriatrics@louisville.edu

Who inspires you to anticipate later life with confidence and joy?

Gold Standard Award for Optimal Aging

We are seeking people 85+ who exemplify “optimal” aging – people who are making the most of whatever their later years bring and continue to love life.

NOMINATION DEADLINE IS 5PM, JULY 16, 2012

The winner will be announced on September 25, 2012, at our annual luncheon (information on reverse.)

Criteria for the Gold Standard Award for Optimal Aging

- At least 85 years old by Oct. 1, 2012
- Outstanding model for optimal aging in any or all of the following areas:
 - 1) Physical; 2) Emotional; 3) Social; 4) Spiritual and/or Creative

Nominee Name	_____	Age	_____
Address	_____		
City, ST Zip	_____		
Phone	_____		
Email	_____		

In the space below, briefly describe why this person fits the criteria for the Gold Standard Award for Optimal Aging. Additional information limited to 2 double-spaced pages.

Nominator Name	_____
Business Affiliation (if applicable)	_____
Address	_____

Phone	_____
Email	_____

Return form to: Award - UofL Geriatrics
401 E. Chestnut, Suite 170
Louisville, KY 40202

For more information, contact UofL Geriatrics at 502-852-1998 or by email to UofLGeriatrics@louisville.edu.

UofL Health Care Outpatient Center | 401 E. Chestnut St. , Suite 170 | Louisville, KY 40202 | 502-588-4271 | UofLGeriatrics@louisville.edu



Geriatrics

Gold Standard Award for Optimal Aging Luncheon

September 25, 2012

The Olmsted

3701 Frankfort Avenue

St. Matthews, KY 40207-2556

11:30 AM – 1:30 PM

Tickets

\$50 per person

\$450 for table of 10

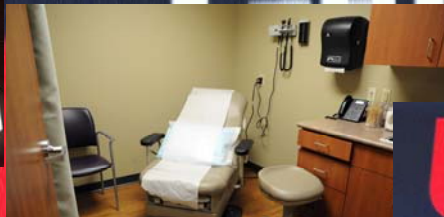
For more information or to make a reservation,

please call **502-852-1998** or

e-mail UofLGeriatrics@louisville.edu

UofL Health Care Outpatient Center | 401 E. Chestnut St., Suite 170 | Louisville, KY 40202 | 502-588-4271 | UofLGeriatrics@louisville.edu

More Of Our Grand Opening



UofL Geriatrics



UofL Geriatrics

UofL Geriatrics

UofL Geriatrics

UofL Health Care Outpatient Center | 401 E. Chestnut St. , Suite 170 | Louisville, KY 40202 | 502-588-4271 | UofLGeriatrics@louisville.edu

Geriatricians

Ronna Compton, DO
 Christian Furman, MD
 Rangaraj Gopalraj, MD, PhD
 Laura Grooms, MD
 Patrick Murphy, MD
 James O'Brien, MD
 Belinda Setters, MD

Psychologist

Benjamin Mast, PhD

Fellows

Sadaf Naqvi, MD
 Daniela Neamtu, MD

Medication Management

Demetra Antimisiaris, PharmD

Nurse Practitioners

Rebecca Griffin, APRN
 Angela Irvin, APRN
 Noreen Mason, APRN
 Amy Varner, APRN

Social Worker

Brenda Purser, MSSW, CSW

Staff

Lora Doram, MA, Team Lead
 Michael Lawrence, MA
 Audrey Lee, Practice Manager & Coordinator
 of Nursing Home & Home Call Program
 Robin Naiser, Staff of Nursing Home &
 Home Call Program
 Natasha Ross, MA
 Rhonda Woosley, Receptionist

Margaret Feldman, Coordinator-Geriatric
 Enhancements

Norma Thieman, Program Coordinator Sr.

Chad Vaughn, Executive Director
 Amanda Padgett, Asst. Dir. Clinical Oper.

Veterans Affairs Medical Center Faculty

Kelly Church, MD
 Sarah Fulks, MD
 Nicholas Mattingly, MD
 Lisa Vuovolo, MD

www.familymedicine.louisville.edu

www.polypharmacyinitiative.com

UofL Geriatrics serves as Medical Director in these nursing homes:

Christian Health Center

920 S. 4th St.
 Louisville, KY 40202
 502-583-6538
 Patrick Murphy, MD
 Angela Irvin, APRN

Episcopal Church Home

7504 Westport Rd.
 Louisville, KY 40222
 502-736-7800

Laura Grooms, MD

Rebecca Griffin, APRN

Noreen Mason, APRN

Owen Household/Palliative Care

Masonic Home of Louisville

3701 Frankfort Avenue
 Louisville, KY 40207
 502-897-4907

Christian Davis Furman, MD, MSPH

Rangaraj K. Gopalraj, MD, PhD

Sacred Heart Village

2120 Payne St.
 Louisville, KY 40206
 502-895-9888

Patrick Murphy, MD

Rebecca Griffin, APRN

Treyton Oak Towers

211 W. Oak St.
 Louisville, KY 40202
 502-589-3211

Laura Grooms, MD

Amy Varner, APRN

Support UofL Geriatrics

If you would like to make a
 tax deductible gift to support
 UofL Geriatrics contact:

Larissa Reece
 Office of Advancement
 University of Louisville
 2323 S. Brook St.
 Louisville, KY 40208
 502-852-8910