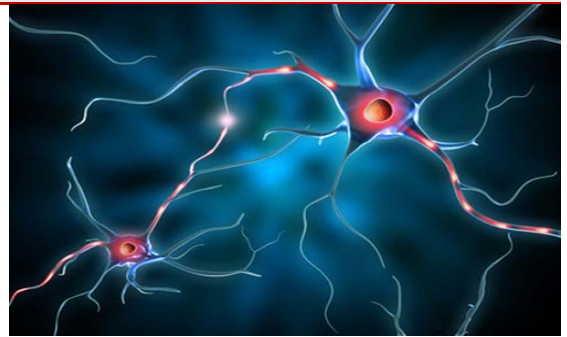


Late Winter Epilepsy Symposium

Saturday, March 12, 2016

Jewish Hospital - Bottigheimer Auditorium, First Floor
200 Abraham Flexner Way
Louisville, KY 40202

*Registration for this course is free to all participants until March 1, 2016.
Please complete online registration in advance to allow for program planning.
A late fee of \$15 will apply for registration received after March 1, 2016.*



Register now at:

<http://bit.ly/epilepsy16>

Course Overview

This continuing medical education course will cover various topics related to the latest advances in diagnosis and treatment of epilepsy. Specific areas covered will include GABA Receptors and Epilepsy, Sleep and Epilepsy, Nonepileptic Seizures, Current Management of Refractory Epilepsy and What's New for Kids? (an update in epilepsy management for children). Didactic information will be given by faculty in both adult and pediatric epilepsy. A panel discussion will occur during the break.

Course Director

M. Steven Evans, MD
Professor
Director, Epilepsy Division
Department of Neurology
University of Louisville
School of Medicine
Louisville, KY

Learning Objectives

- Identify and manage sleep disorders in the patient with refractory epilepsy.
- Better recognize and manage nonepileptic seizures.
- Identify and refer earlier for management of refractory epilepsy.

Target Audience

The target audience for this seminar is attending physicians, residents, APRNs and RNs from neuroscience specialties, primary care, and any other healthcare professional with an interest in learning more about epilepsy diagnosis and treatment.

Designation Statements

Physician Credit - The University of Louisville Continuing Medical Education office designates this live activity for a maximum of 4.0 *AMA PRA Category 1 Credits™*. Physicians should claim only the credit commensurate with the extent of their participation in the activity.

Nurses - This program has been approved by the Kentucky Board of Nursing for 4.8 continuing education credits through University of Louisville Hospital, provider number 4-0068-7-16-910. The Kentucky Board of Nursing approval of an individual nursing education provider does not constitute endorsement of program content.

Accreditation Statement

The University of Louisville School of Medicine is accredited by the Accreditation Council for Continuing Medical Education (ACCME) to provide continuing medical education for physicians.

Next Page
View Full Details
and Schedule

Conference Schedule

Saturday, March 12, 2016

7:30 – 8:25am

Registration and Breakfast

8:25 – 8:30am

Welcome

Dr. Steve Evans

8:30 – 9:15am

GABA Receptors and Epilepsy

Dr. Greg Barnes

9:15 – 10:00am

Sleep and Epilepsy

Dr. Brittany Chapman

10:00 – 10:45am

Nonepileptic Seizures

Dr. Chris Shafer

10:45 – 11:00am

Snack Break and Discussion/Review Panel

All Speakers

11:00 – 11:45am

Current Management of Refractory Epilepsy

Dr. Adriana Palade

11:45 – 12:30pm

What's New for Kids?

Dr. Michael Oldham

Acknowledgements

We thank our supporting and exhibiting companies for their participation in the conference! A final listing of supporters and exhibitors will be available at the meeting.

Participating Faculty

Gregory Barnes, MD, PhD

Associate Professor
Department of Neurology
University of Louisville
School of Medicine
Louisville, KY

Brittany Chapman, MD

Assistant Professor
Department of Neurology
University of Louisville
School of Medicine
Louisville, KY

Michael S. Oldham, MD

Assistant Professor
Department of Neurology
University of Louisville
School of Medicine
Louisville, KY

Adriana Palade, MD

Associate Professor
Department of Neurology
University of Louisville
School of Medicine
Louisville, KY

Chris Shafer, MD

Associate Professor
Department of Neurology
University of Louisville
School of Medicine
Louisville, KY

Special Services

All individuals are encouraged to participate. To request disability arrangements, please contact the Course Coordinator Emily Rollins **502-407-3226** at least 14 days prior to the date of this program. Continuing Medical Education and Professional Development fully complies with the legal requirements of the ADA and the rules and regulations thereof.