

FOURTH ANNUAL SYMPOSIUM

Pediatric Behavioral & Mental Health

Friday, September 25, 2015
8:15 a.m. – 4:30 p.m.

Home of the Innocents
1100 E. Market Street
Louisville, KY, 40206



Nature
& Nurture

Updated Perspectives on a Classic Question

Register Online at
<http://bit.ly/pediatrics15>



UNIVERSITY OF
LOUISVILLE
PEDIATRICS



KOSAIR
CHILDREN'S
HOSPITAL



John F. Ice Lecturship Fund
Bingham Clinic



Target audience

This activity is targeted toward pediatricians, child psychiatrists, psychologists, nurse practitioners, social workers, educators, and all those working with pediatric mental health.



Statement of Educational Need

Pediatricians throughout Kentucky view mental health as an area of critical concern in their practices and report that up to 30 percent of their office time is devoted to meeting the mental and behavioral health care needs of patients and families. According to the chair of the American Academy of Pediatrics Task Force on Mental Health, 21 percent of children and adolescents in the United States meet diagnostic criteria for a mental health disorder and another 16 percent have impaired mental health functioning but no specific diagnosis. The World Health Organization (WHO) has called integrating mental health services into primary care the most viable way to close the treatment gap for mental illness and an investment that can yield affordable and effective results. The Pediatric Alliance for Behavioral and Mental Health was formed in 2010 in response to pediatrician concerns and community needs. The Alliance includes pediatricians, psychologists, child psychiatrists, educators, social workers, nurse practitioners, and representatives from mental health organizations and mental health providers. The Alliance, in its effort to advocate for pediatric mental health services and training, began the annual Pediatric Mental and Behavioral Health Symposium in 2012.

Learning Objectives

As a result of participating in this activity, participants should be able to:

1. Use a family-based approach to implement interventions that promote wellness and resilience in their pediatric patients.
2. Use evidence-based psychosocial and pharmacologic interventions to treat childhood disruptive behaviors and aggression.
3. Recognize the role of temperament in childhood emotional and behavioral problems and understand family based treatment options.
4. Identify characteristic features of PTSD in pediatric patients and evidence based treatments available for these children.

Course Director

David Lohr, MD

Assistant Professor of Pediatrics
University of Louisville School of Medicine
Louisville, Ky.

Gail Williams, M.D.

Professor of Pediatrics
University of Louisville School of Medicine
Louisville, Ky.

Planning Committee

Joseph Bargione, PhD

Fay Jones, MD, PhD, MSPH

David Lohr, MD

Debbie Lorence, MSSW, LCSW

Laurie Mount-Grimes, PhD

Gail Williams MD

Our Sponsors

Special thanks to our major supporters:

Bingham Clinic

Kosair Charities

Kosair Children's Hospital

Genesight

Supernus Pharmaceuticals

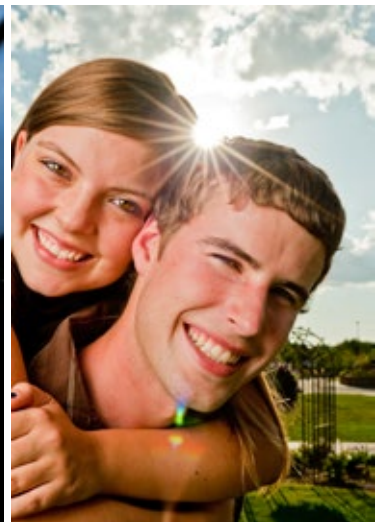
UL Pediatrics

Other sponsors:

Our Lady of Peace/Kentucky One Health

Passport Health Plan

WellCare Health Plans, Inc.



Participating Faculty

Joseph Bargione, PhD

Chief Psychologist
Jefferson County Public Schools
Louisville, KY

Jessica Beal, PsyD

Behavioral Health Program Manager
Passport Health Plan
Louisville, KY

Bryan Carter, PhD

Professor of Child Psychology
Department of Pediatrics
University of Louisville School of
Medicine
Louisville, KY

Deborah Davis, PhD

Professor of Pediatrics
University of Louisville School of
Medicine
Louisville, KY

John Gallehr, MD

Assistant Professor of Child Psychiatry
Department of Pediatrics
University of Louisville School of
Medicine
Louisville, KY

James Hudziak, MD

Director of Vermont Center for
Children, Youth & Families and the
Division of Child Psychiatry,
Professor of Psychiatry, Medicine, and
Pediatrics
University of Vermont College of
Medicine
Burlington, VT

Allan Josephson, MD

Professor of Child Psychiatry
Department of Pediatrics
University of Louisville School of
Medicine
Louisville, KY

Jennifer Le, MD

Associate Professor of Child
Psychiatry
Department of Pediatrics
University of Louisville School of
Medicine
Louisville, KY

Liz McKune, EdD

Behavioral Health Director
Passport Health Plan
Louisville, KY

Amber Pendleton, MD

Assistant Professor
Division of General Pediatrics
University of Louisville School of
Medicine
Louisville, KY

Chris Peters, MD

Associate Professor of Child
Psychiatry
Department of Pediatrics
University of Louisville School of
Medicine
Louisville, KY

Sarah Spurling, PhD

Assistant Professor of Child
Psychology
Department of Pediatrics
University of Louisville School of
Medicine
Louisville, KY

Fred Stocker, MD

Associate Professor of Child
Psychiatry
Department of Pediatrics
University of Louisville School of
Medicine
Louisville, KY

Agenda

Morning Sessions

8:15 – 8:50 a.m.

Registration & Breakfast

8:50 – 9:00 a.m.

Opening Remarks

9:00 – 9:40 a.m.

Preventing Teen Suicide

Joseph Bargione PhD

9:40 – 10:40 a.m.

Keynote Address:

**The Vermont Family Based
Approach**

Jim Hudziak MD

10:40 – 11:20 a.m.

PTSD: Diagnosis and Therapy

Fred Stocker MD

11:20 a.m. – 12:00 p.m.

**The Impact of Video Games on
Pediatric Mental Health**

Chris Peters MD

12:00 – 12:50 p.m.

Lunch provided

Afternoon Sessions

**Breakout Sessions with case presentations:
participants pick two of three topics**

1:00 – 2:30 p.m.

Breakout Session 1

2:45 – 4:15 p.m.

Breakout Session 2

*Topic 1: Psychopharmacology of
Impulse Control Difficulties and
Aggression*

Speakers:

John Gallehr MD, Jennifer Le, MD,
Sarah Spurling PhD

*Topic 2: Integrated Health Care
Model: Practical Implementation*

Speakers:

Liz McKune EdD, Jessica Beal PsyD,
Amber Pendleton MD

Topic 3: Understanding Temperament

Speakers:

Bryan Carter PhD, Deborah Davis PhD,
Allan Josephson, MD

4:15 – 4:30 p.m.

**Closing Remarks and
Call to Action**





Accreditation Statement

The University of Louisville School of Medicine is accredited by the Accreditation Council for Continuing Medical Education (ACCME) to provide continuing medical education for physicians.

Continuing Education

Physicians

The University of Louisville Continuing Medical Education office designates this live activity for a maximum of 6.25 *AMA PRA Category 1 Credits*[™]. Physicians should claim only the credit commensurate with the extent of their participation in the activity.

Nurses

This program has been approved by the Kentucky Board of Nursing for 7.5 continuing education credits through University of Louisville Hospital, provider number 4-0068-7-16-870. The Kentucky Board of Nursing approval of an individual nursing education provider does not constitute endorsement of program content.

Social workers

Social Work Credit has been applied for with the Kentucky Board of Social Work.

Psychologists

Psychology Credit has been applied for with the Kentucky State Board of Psychology. Registrants should obtain a certificate of completion from UL CME and send to the KY State Board of Psychology for CE credit.

Registration Information

Register Online at:

<http://bit.ly/pediatrics15>

Deadline: Wed., September 16, 2015

Cancellation policy

Requests for cancellation must be submitted to CME&PD@louisville.edu on or before Wednesday September 16, 2015 will receive a full refund less a \$25 processing fee. No refund will be given for requests received after Wednesday September 16, 2015.

E-syllabus

Slide presentations will be available at the website as they are received and will remain on line for 30 days after the presentation.

Special Services

All individuals are encouraged to participate. To request disability arrangements, please contact UL CME at cme&pd@louisville.edu at least 14 days prior to the date of this program. Continuing Medical Education and Professional Development fully complies with the legal requirements of the ADA and the rules and regulations thereof.

Location and parking

Home of the Innocents is located at 1100 E. Market St., east of downtown Louisville in the Butchertown neighborhood. Free uncovered parking is available on the Home of the Innocents campus.

Presented by:



Other Sponsors:

