

# UNDERSTAND THE ORIGINS AND TREATMENT OF PBC AND PSC

By Attending this Complimentary CME Event

## “Improving Diagnostic and Treatment Outcomes of Cholestatic Liver Diseases and Pruritus”

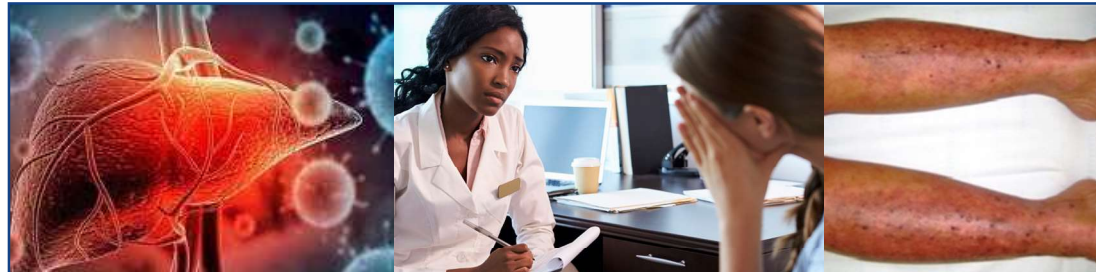
**MAYO CLINIC JACKSONVILLE**

**Monday, September 30, 2024**

**12:30 - 1:30pm**

**Walker Auditorium**

**4500 San Pablo Road, South**



Cholestatic Liver Disease causes liver damage and fibrosis owing to bile stasis. It is represented by primary biliary cholangitis (PBC) and primary sclerosing cholangitis (PSC). The pathogenesis of the disease is still unclear, the disease may progress slowly but can progress to liver cirrhosis or liver failure.

The seminar will explore the natural history of PBC and PSC and provide information on the latest drug therapies currently available as well as those under investigation. A special section will focus on the frequent complaint of itching and the management of Cholestatic Pruritus.

This seminar will focus on:

- ▶ The progression of chronic cholestatic disease.
- ▶ Explaining how and why PBC patients are unaware of their disease status for so long.
- ▶ The newest AASLD and EASL diagnostic guidelines and tests for PBC and PSC.
- ▶ Working with patients to better manage Cholestatic Pruritus and the current and future therapies to reduce itch.
- ▶ The long-term approaches to managing PBC and PSC patients.
- ▶ Evaluate the newest PBC therapies in late-stage development and the state of the art in treating Primary Sclerosing Cholangitis

**There is no charge for this event, but space is limited and Pre-registration is requested.**

For More Information and to Register:

<https://bit.ly/PBC24>



Your Course Faculty  
**Paul Martin, MD, FAASLD**  
Professor of Medicine  
University of Miami

### Joint Provider Statement

This activity has been planned and implemented in accordance with the Essential Areas and Policies of the Accreditation Council for Continuing Medical Education (ACCME) through the joint providership



of the University of Louisville and SC Liver Research Consortia. The University of Louisville is accredited by the ACCME to provide continuing education for physicians.



### Designation Statements

**Physicians** - The University of Louisville Office of Continuing Medical Education & Professional Development designates this live activity for a maximum of **1.0 AMA PRA Category 1 Credit(s)**<sup>™</sup>. Physicians should claim only the credit commensurate with the extent of their participation in the activity.

**Nurses** - This program has been approved by the Kentucky Board of Nursing for 1.2 continuing education credits through University of Louisville Hospital, provider number 4-0068-12-24-1390. The Kentucky Board of Nursing approval of an individual nursing education provider does not constitute endorsement of program content.

This activity is supported in part by educational grants from CymaBay, Intercept and Mirum Pharmaceuticals.