

Nephrology Conference 2023

For Nephrologists and Advanced Practice Providers

March 18, 2023
8:30 a.m.-3 p.m. EST

UofL Health – Heart Hospital
UofL Health – Rudd Center
16th Floor Conference Center
Louisville, KY

Updates in transplant nephrology and treatment of glomerulonephritis patients

REGISTER NOW: <https://bit.ly/nephrology23>
In-Person and Virtual Options

Objectives:

- Describe developments in immunosuppression for kidney transplant patients
- Identify new emerging ways to monitor for the efficacy of immunosuppression
- List criteria for combined kidney and pancreas transplantation and how it is different from kidney alone transplant
- Describe new kidney allocation system that affects decisions on listing with multiple programs, wait times for cadaver kidney
- Identify newest evidence-based treatments of glomerulonephritis patients
- Review data on hepatitis C positive donor transplantation

Course Description:

There have been many new developments in kidney transplantation in recent years – including allocation of cadaveric kidneys, use of hepatitis C positive donor kidneys, changes in immunosuppression and monitoring for the efficacy of it. This course will familiarize general nephrology providers with all the new developments, so they can help their dialysis and CKD patients make important decisions on accepting a hepatitis C positive kidney or listing at multiple centers. This course will also update general nephrology providers on the developments in management of immunosuppression for the patients they follow long-term post-transplant. Dr. Dawn Caster, internationally known expert in glomerulonephritis, will give updates in the treatment of patients with IgA nephropathy and Lupus nephritis.

UofL Health

Trager Transplant Center

For more information, contact:

Dana Bland, Physician Relations Liaison
Dana.Bland@uoflhealth.org

Thank you to our sponsors

calliditas
THERAPEUTICS

 **eurofins**
Viracor

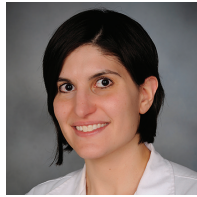
 **natera**[™]


Veloxis
PHARMACEUTICALS
an Asahi Kasei company

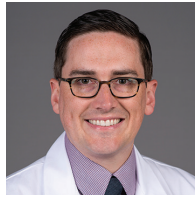
Conference Speakers



Rosemary Ouseph, M.D.



Dawn Caster, M.D.



Dylan Adamson, M.D.



Mary Eng, M.D.



Lina Mackelaite, M.D.

Agenda:

8:30–9 a.m. EST	Registration/Continental Breakfast
9-10 a.m.	Opening Remarks/Immunosuppression Post Kidney Transplant – Does One Size Fit All? <i>Lina Mackelaite, M.D.</i>
10-11 a.m.	Review and Update of Kidney/Pancreas Transplantation <i>Mary Eng, M.D.</i>
11-11:30 a.m.	Hepatitis C Positive Donor Transplant <i>Dylan Adamson, M.D.</i>
11:30 a.m-noon	Keeping Up with Changes in Cadaveric Kidney Allocation <i>Lina Mackelaite, M.D.</i>
Noon-12:30 p.m.	Lunch
12:30-1 p.m.	Living Donor Transplantation <i>Dylan Adamson, M.D.</i>
1-2 p.m.	Updates in the Treatment of Lupus Nephritis and IgA Nephropathy <i>Dawn Caster, M.D.</i>
2-3 p.m.	Recurrent Glomerulonephritis in Kidney Transplant Recipient <i>Rosemary Ouseph, M.D.</i>
3 p.m.	Closing remarks



Designation Statement

The University of Louisville School of Medicine designates this live activity for a maximum of 5.5 AMA PRA Category 1 Credit(s)[™]. Physicians should claim only the credit commensurate with the extent of their participation in the activity.



Accreditation Statement

The University of Louisville School of Medicine is accredited by the Accreditation Council for Continuing Medical Education (ACCME) to provide continuing medical education for physicians.

Kentucky Board of Nursing

This program has been approved by the Kentucky Board of Nursing for 6.6 continuing education credits through University of Louisville Hospital, provider number 4-0068-12-24-1321. The Kentucky Board of Nursing approval of an individual nursing education provider does not constitute endorsement of program content. Completion criteria to obtain CE's: Attend entire session and complete the evaluation.