

UofL's BOOK-IN-COMMON 2009-10 CALENDAR OF EVENTS

Tuesday, September 1st: Conversation Café
SAC Room 303A, 12:30 - 1:45pm
Discussion of *The Devil's Highway* and issues related to immigration

Thursday, September 10th: *The Other Side of Immigration*
SAC Floyd Theatre, 7:30 - 9pm
Documentary film and Q&A with director Roy Germano

Monday, September 14th: *Senorita Extraviada*
Ekstrom Library, Chao Auditorium, 5 - 7pm
Documentary film about the hundreds of missing women in Juárez, Mexico. Panel discussion to follow.



Thursday, September 24th: Luis Alberto Urrea
Strickler Hall, Middleton Auditorium, 6pm
Author lecture, Q&A, and book signing reception

Thursday, October 15th: *The Sixth Section*
Chao Auditorium, 1 - 2:15pm
Film screening and informal discussion w/ director Alex Rivera

Thursday, October 15th: *Sleep Dealer*
Speed Museum Auditorium, 5:30pm
Sci-fi film and Q&A with Director Alex Rivera

Oct. 15th - Nov. 7th: "The Women of Michoacán: Art and Artists"
University of Louisville, Hite Gallery

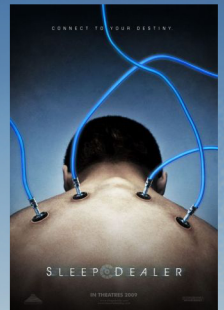
Wednesday, October 21st:
Let's Talk Lunch/Conversation Café
Cultural Center, 11:30am - 1pm
Come have lunch and discuss issues in the local Hispanic community.

Wednesday, October 28th: International Tea
Cultural Center, 11:30am - 1pm
Spend an hour enjoying lunch and conversation with international and other students.

Monday, November 2nd: Peace & Justice Week Begins
Visit louisville.edu/aliinstitute for more details.

Friday, November 6th: Downtown Day of the Dead Celebration
UofL Day of the Dead Altars at various downtown locations, 5 - 9pm
Free Trolley Hop. Visit louisville.edu/bookincommon for more information.

Monday, November 30th: Essay Contest Deadline
Visit louisville.edu/bookincommon for contest details.



"The single most compelling, lucid, and lyrical contemporary account of the absurdity of U.S. border policy...Urrea cuts through the prevailing mythologies surrounding the border and reveals, unsentimentally but with compassion, how a simple political boundary manages to scramble the basic humanity of all whose lives it divides and defines." - Atlantic Monthly

The Devil's Highway by Luis Alberto Urrea

Various BinC events sponsored by the Office of First Year Initiatives, the Commonwealth Center for Humanities, the Cultural Center, Ideas 2 Action; Latin American and Latino Studies; the McConnell Center; the Office of Civic Engagement, Leadership and Service; PEACC and the Student Activities Board.

Cover photograph by David Maisel
Reprinted with permission from Hachette Book Group USA

louisville.edu/bookincommon