

What You Need to Know Before Moving Out of Your Residence Hall

This is a small guide for moving out of an on-campus residence hall and into your new home at one of UofL's Affiliated Properties.



COOKING

Once you move into an apartment, you will have more opportunities to cook. Shopping lists and recipes are two tools that will make this a smooth transition.



CLEANING

In an apartment, you and your roommates are 100% responsible for keeping your space clean. A cleaning schedule is an effective tool to make sure that your home is clean and work is distributed equally.



INTERIOR DESIGN

Probably the best part about moving into an apartment is that now you have more spaces to decorate and turn into a home! Make sure to have a roommate meeting so that you can pick an aesthetic and include everyone in this fun activity.



Safety Tips

Now that you will be living in an apartment, you also have more responsibility for keeping your roommates and yourself safe. Make sure to lock front and back doors before exiting. Also make sure to lock your car and remove any valuable items.



Budgeting Tips

At this point in your college career, you might want to start forming good habits regarding money and expenses. Budgeting is the best way to keep track of expenses and achieve savings goals. Check out our webpage for some examples of different types of college budgets.



What you need to know about

THE RETREAT

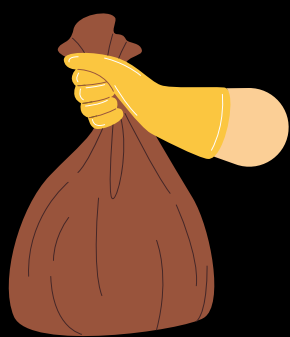
BEDDING



Buying new sheets!

In contrast to the beds in your residence hall, all beds at The Retreat are queen-sized. Be sure to get bedding that fits!

TRASH DISPOSAL



Where to throw away your trash

Trash will be picked up on the front porch of your cottage. Just make sure to place it in a visible spot for the maintenance team to see.

GATED COMMUNITY



Gate-openers and parking passes

The Retreat is a gated community just outside of campus. Remote-controlled gate-openers are given to all residents and allow selective entry and exit. Parking at The Retreat requires a parking pass, and violators will be towed.

MAINTENANCE

How does maintenance work?



Any utility issues can be reported via an online maintenance form located in each resident's portal on our official website. Issues are resolved within 2-4 business days.

What you need know about

THE PROVINCE



UOFL POLICE DEPT. ESCORT

How to go back home at night safely



The Province is only a 10-minute walk from campus; however, we recommend utilizing UofL's Police Escort Service if you find yourself cramming in the Library until late at night.

WALKING BRIDGE

How to get to UofL Campus



In order to get to campus, you must walk across a pedestrian bridge which runs over a set of train tracks. This bridge is open for students, but it may be locked for safety purposes during long breaks or other events. Make sure to bring your keyfob!

TRASH DISPOSAL

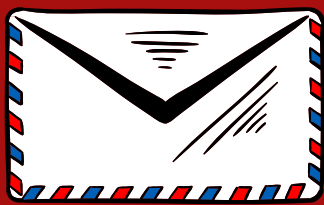


Where to throw away your trash

There are several trash disposal compartments throughout the property. Make sure to locate the one nearest to your apartment. The compartments get emptied several times a week.

MAIL

How to get your mail



There is a small gazebo with lockers which hold mail for each apartment. You and your roommates will share a mailbox. All packages should be picked up at the leasing office by showing an ID.



What you need to know about **THE CLUBHOUSE**

MAINTENANCE

Something broken?



The Clubhouse has maintenance staff that will handle any issues you may have in your apartment unit. All you have to do is login to your resident portal and submit a work order. They will respond to your request as soon as possible and help fix the issue at hand.

TRASH DISPOSAL



How to take care of the trash

The Clubhouse provides trash service called Trash Money. This service provides you with a trashcan to place outside your door for nightly trash collection.

MAIL

Where and how to pick up your mail



Packages are delivered to the front office. To retrieve them, all you need is your name and an ID. You will be notified when a package is delivered and picked up in your name. Upon move-in, you will receive a key to your mailbox, and you can drop and pick up mail there.

CAMPUS ESCORT

How to get home safely after hours



Although The Clubhouse is near campus, the walk may be a bit too far, so don't forget to call the Belknap Police to request a Campus Escort anytime from dusk to dawn. Simply request a ride and let them know between which buildings you will be waiting.



What you need to know about **THE NINE**

SECURITY

How does security work?



The UofL Police Department makes regular patrols around the building and in the parking garage. Additionally, a private security company monitors security inside of the building.

MAIL

How can I get my mail?



There are mailboxes per apartment for smaller packages and paper mail. Larger packages must be retrieved at the front desk. Remember to bring a form of ID!

MAINTENANCE

Is something broken or not functioning in your unit?



Simply submit a maintenance form in your resident portal on our website. This is the same website where you pay your rent. A maintenance employee will arrive to resolve your issue within 2-3 business days!

GUESTS

Guest are welcomed at The Nine.



If your guest needs to park in the visitor lot, make sure to get a parking pass from the front office to make sure that they do not get towed! Guests can enter the building by inputting your specific key code at the front door keypad.

What to buy!

A guide to getting everything you might need to start cooking for yourself and keeping your apartment clean. These lists can be split up between you and your roommates to start building a fully equipped kitchen and cleaning kit!

Basic Kitchen Needs

- Cutlery (knives, forks, spoons)
- A few glasses/cups
- A few plates
- One eight-inch chef's knife
- A medium-sized pot
- 10-inch pan
- A spatula
- A large stirring spoon
- Oven mitts
- A glass baking dish
- A metal baking sheet
- A colander
- A can opener



Basic Cleaning Kit

- Toilet brush
- Grout and tile cleaner
- Extendable duster
- Vacuum
- Oven cleaner
- Stainless steel cleaner
- Scrubbing sponges
- Microfiber cloths
- Rags or chamois mop



Check out our Instagram page for posts about UofL events on campus and other info!



@ochlouisville