

# THE ADVOCATE



## The Graduate School Celebrates Black History Month!

February is dedicated to Black History Month, honoring the triumphs, struggles, and achievements of African Americans throughout U.S. history.

### Upcoming BHM events:

[https://www.canva.com/design/DAEzSgHRu2g/xXKEGN1I9xrMYnCbqc4ujQ/view?utm\\_content=DAEzSgHRu2g&utm\\_campaign=designshare&utm\\_medium=link&utm\\_source=viewer](https://www.canva.com/design/DAEzSgHRu2g/xXKEGN1I9xrMYnCbqc4ujQ/view?utm_content=DAEzSgHRu2g&utm_campaign=designshare&utm_medium=link&utm_source=viewer)

#### IN THIS ISSUE

---

**M.A.G.S OFFICERS  
AND VACANCIES**

---

**THE BLACK GRADUATE  
AND PROFESSIONAL  
STUDENT ASSOCIATION**

---

**RESEARCH AWARDS  
AND FUNDING  
OPPORTUNITIES**

---

**STUDENT SPOTLIGHT:  
NANA BULLOCK**

---



## Letter from the Director

Dear Advocate Reader,

Welcome to the Advocate Newsletter. I hope that your spring semester has gotten off to a wonderful start! This newsletter will provide updates on graduate programs and initiatives as well as local and national happenings relevant to graduate students, faculty and staff.

While we are slowly transitioning back to on campus events and activities, we know that “normal” looks a lot different and the COVID-19 pandemic continues to impact us and has repositioned our lives. Here in the Graduate School, your safety and well-being are our number one concern, and our entire staff wants to continue to be a resource to you.

Our mission is to advocate and provide support for graduate education, graduate students, and interdisciplinary programs, and to promote the advancement of knowledge through the teaching and training of post-baccalaureate students.

*The Advocate* newsletter serves as an informational means to keep readers up to date with developments and happenings in the Graduate School, at the University, and in the community, as related to diversity, inclusion and scholarship. This issue is packed with information, so enjoy and happy reading!

Sincerely,

***Dr. Tamekka Cornelius***

Director, Graduate Recruitment and Diversity Retention  
The Graduate School

# Multicultural Association of Graduate Students

The mission of M.A.G.S. is to engage and empower underserved graduate students of color at the University of Louisville. M.A.G.S. serves as an advocate for graduate students of color that include organizing professional development opportunities, enhancing personal connections, and creating a culture of mentorship.

## M.A.G.S. Current Executive Board



President: Selma  
Podbicanin

PhD Student, School of  
Public Health &  
Informational Sciences



Vice-President: Taylor  
Garrison

PhD student, Microbiology



Secretary: Michelle  
Montalvo-Jourdan

Master's Student, Anthropology



Treasurer: Deme Wharton

Master's Student, Human  
Resources and Organizational  
Development



# It's nominations time!

M.A.G.S is seeking nominations and self-nominations for M.A.G.S. 2021-2023 Executive Board! This is a great way to get more involved with M.A.G.S. and serve as a leader/advocate for graduate students of color. If interested send an email to [uoflmags@gmail.com](mailto:uoflmags@gmail.com)

## Open positions include:

### **Parliamentarian**

#### **Roles, Responsibilities, and Requirements:**

- Attend all executive board meetings
- Give advice to the President/Vice-President during meetings
- Inform the President of errors in Parliamentary procedure if they affect the basic rights of members
- Ensures equality and upholds fairness for all members of the organization
- maintain archives artifacts and records
- Time commitment: 2 hours per week

### **Public Relations**

#### **Roles, Responsibilities, and Requirements:**

- Attend all executive board meetings
- Create flyers and all promotional items for the organization
- Market M.A.G.S around the University of Louisville's campus
- Market and publicize M.A.G.S. social, professional development, research, and service events to regular membership and the university community
- Maintain M.A.G.S. presence on social media platforms (Facebook, Twitter, Instagram, etc.)
- Time commitment: 5 hours per week



# Research Award Opportunity



## RESEARCH AWARD

Need help with the cost of presenting at a conference, research travel, or certain research supplies this semester?

MAGS research awards are designed to encourage and highlight diverse research that engages global and social justice issues!

For more information and the application please see:  
<https://louisville.edu/graduate/diversity/mags/mags-research-awards-application>

Deadline: February 28, 2022  
Application Notification: March 11, 2022

For questions please contact:  
Selma Podbicanin [selma.podbicanin@louisville.edu](mailto:selma.podbicanin@louisville.edu) or Tamekka Cornelius [tamekka.cornelius@louisville.edu](mailto:tamekka.cornelius@louisville.edu)

**The Graduate School in collaboration with the Office of Diversity and Equity sponsors two graduate students and two faculty members to attend this year's event**

## **The Graduate School Invites**

current doctoral students to apply to the annual Faculty Women of Color in the Academy National Conference (FWCA)



10<sup>TH</sup> FACULTY WOMEN OF COLOR IN THE ACADEMY NATIONAL CONFERENCE

**KEYNOTE SPEAKERS**

**APRIL 1 - 3, 2022**



**DR. ROXANE GAY**

**NIKOLE HANNAH-JONES**

**NORMA V. CANTU**



REGISTER ► [www.inclusive.vt.edu/fwca](http://www.inclusive.vt.edu/fwca)  
CRYSTAL GATEWAY MARIOTT | 1700 S EADS ST. | ARLINGTON, VA 22202

Current and former GTAs and those with an interest in a faculty career are encouraged to apply

**Link to apply and full conference details:**

<https://louisville.edu/graduate/diversity/fwca-application-conference>



**The two students selected to attend will have registration, airfare, and hotel (double-room occupancy) covered!**

# Graduate Student Spotlight!



Nana Bullock is a Fulbright Scholar, originally from Ghana and grew up in Chicago. Nana received her bachelor's degree in Health Education from Southern Illinois University. Nana then received her Master's of Public Health from Michigan State.

Nana feels that UofL chose her and she chose UofL. She developed a great relationship with the dean of the School of Public Health and felt the faculty and staff were very nice and warm. Her department is very intimate and supportive of their students.

Nana has been interested in public health since 2008. She has studied and worked in areas of disease like tobacco, heart disease, and sexual health. Nana took an interest in sexual health because sex culture is negative and sex is not talked about enough. There is a stigma around HIV, there are barriers to access, and those with an HIV diagnosis face discrimination. Nana wants to help improve the health and well-being of those in Ghana.

Nana wants to remind other graduate students to "be resilient and persistent. You don't have to know it all and imposter syndrome is very real. Have multiple plans when you fail. Keep pushing and have fun!"

Nana has limited free time but intentionally creates time for herself and enjoys traveling, eating, trying new foods, and doing "rich auntie stuff" with her nieces.





# The Black Graduate and Professional Student Association



Black Graduate & Professional  
Student Association

BGPSA serves to provide an environment that promotes and defends cultural awareness and responsiveness, supports the total complete Black student experience on campus, and supports the professional growth for Black Graduate and Professional Students

## BGPSA Officers and Executives:



**Adrienne B. Smith,**

**MPH**

PhD Candidate  
Finance Chair



**W. Denae**

**Powell, MA**

PhD Candidate  
Secretary



**Nana Ama**

**Bullock, MPH**

PhD Candidate  
Executive Vice  
Chair



**Kendria**

**Kelly-Taylor,**

**MSPH**

PhD Candidate  
Communications  
Chair



**Jason A.**

**Deakings,**

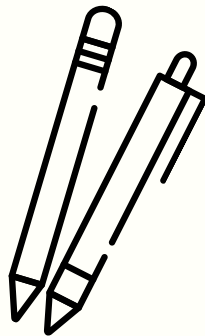
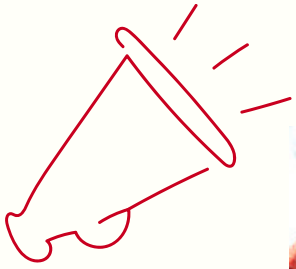
**MSPH**

PhD Candidate  
Executive Chair

**Follow BGPSA on Instagram @bgpsauofl**

# Know anyone interested in attending graduate school at the University of Louisville?

Attend the Graduate School Spring Visitation Day for more info!



The Graduate School at the University of Louisville presents

## Spring 2022 Visitation Day!

Thursday, March 24th

9am-4pm

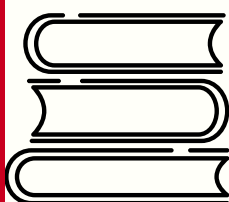
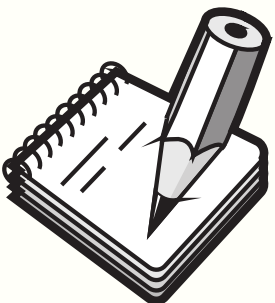
Shumaker Room 139

Deadline to register:

Thursday, March 10th

Link to register:

<https://louisville.edu/graduate/forms/graduate-visitation-day>





# Graduate Student Support Group

Come join us & meet other graduate students from a variety of disciplines with whom you can share your struggles & successes in both graduate school & life.

The goal of this group is to provide a comfortable space to receive & offer support as you navigate through your graduate school journey. This group is led by two licensed therapists.

Location: Virtually through Microsoft Teams

Time: 4:30-5:30pm

When: Every other Thursday

Meeting Dates:

Jan. 27th

Feb. 10th & 24th

Mar. 10th & 24th

Apr. 7th

Questions? Interested in joining the group? Please contact the group leaders - Gabrielle Billings, LCSW [gabrielle.billings@louisville.edu](mailto:gabrielle.billings@louisville.edu) or Michelle Pinckney Johnson, LPCC-S, LMFT [michelle.pinckney@louisville.edu](mailto:michelle.pinckney@louisville.edu)

University of Louisville Counseling Center  
Phone 502-852-6585



# Scholarship Opportunity!



## BRIDGING THE GAP SCHOLARSHIP

BFSA will provide two \$500 scholarships each academic year to two students who champion diversity, inclusion, opportunity, and social justice within the university and the broader Black community. This scholarship intends to "Bridge the Gap" for students with financial need for their educational endeavors.

### CRITERIA

#### ELIGIBILITY

Must be a degree-seeking student who is currently enrolled

\*Scholarships will be awarded to one graduate and one undergraduate student.

#### APPLICATION

Each applicant must submit a letter of recommendation and a 500 word essay.

Essay must include the following:

- Expresses a commitment to diversity and equity and what it means
- Explains an understanding of why the commitment to diversity and equity is an integral part of the university's mission and inseparable from the goal of excellence,
- Details your commitment to inclusive excellence through one's own leadership activities, public service, cultural and/or community involvement at UofL and in the community

**For more information or to apply:**

[www.louisville.edu/bfsa/studentsupport](http://www.louisville.edu/bfsa/studentsupport)



Apply using EngageUofL

**Application deadline: Friday, February 18, 2022**



[bfsascholarshipcommittee\\_group@cardmail.louisville.edu](mailto:bfsascholarshipcommittee_group@cardmail.louisville.edu)

# CODRE Awards



**UL** COMMISSION ON DIVERSITY  
& RACIAL EQUITY

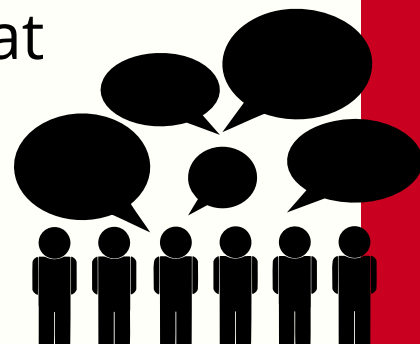
CODRE Is accepting  
nominations for the  
**2022 CODRE  
Awards**

Deadline for submissions  
**March 10**, 11:45pm

To apply go to **[louisville.edu/codre/Applications](https://louisville.edu/codre/Applications)**

The Commission on Diversity and Racial Equity is committed to building an exemplary educational community that offers a rigorous and cultivating intellectual climate that respects human diversity and has a deep understanding of the many differences that enrich a vibrant metropolitan research university.

The Graduate Student Council and  
the Graduate School invite graduate  
students to share their research at  
the annual Graduate Student  
Regional Research Conference  
(GSRRC)



The deadline to apply is Friday, February 25th, 2022

hosted by the Graduate Student Council



**15th Annual  
Graduate Student  
Regional Research  
Conference**

*Located in SAC Ballroom AB*  
**March 24th-25th, 2022**







**MT<sup>®</sup> THREE  
MINUTE  
THESIS**  
FOUNDED BY THE UNIVERSITY OF QUEENSLAND

\$500 First Prize  
\$250 Runner Up  
\$100 People's Choice

### ABOUT 3MT

The Three Minute Thesis (3MT<sup>™</sup>) competition is a collaborative effort between the University of Louisville Graduate School PLAN graduate student professional development and the Graduate Student Council.

Graduate students who participate in 3MT develop vital skills for success in their career inside or outside academia, including presentation and research communication skills.

### ELIGIBILITY

Active doctoral and masters students are eligible to participate in UofL's 3MT Competition.

### BENEFITS OF PARTICIPATING

- Network with other graduate students and faculty
- Awards for Winner, Runner up, and People's Choice
- Finalists can receive one-on-one coaching



LEARN MORE

### VIRTUAL INFO SESSIONS



February 8th, from 3:00 -3:30 pm

February 14th, from 4:00 -4:30 pm

Questions: [michelle.rodems@louisville.edu](mailto:michelle.rodems@louisville.edu)

The deadline to register is  
Friday, February, 18th, 2022 at  
11:59pm