

Staff Senate Update

Harlan Sands

March 14, 2016

Updates

- **Organizational Structure Update**
- **Active Searches**
- **Academic Classroom Building**
- **Commonwealth Credit Union**

- **Office of SVP Finance & Administration**
 - **January 2015 - Total positions: 15**

- **Restructure**
 - **March 2016 - 10 positions**
 - **Eliminated 2 Administrator positions**
 - **No loss of staff level positions - reallocated 4 staff positions to open positions**
 - **Created new unit for Performance Improvement & Business Analytics**
 - **\$100,000 in salary savings**

AVP Search Process

I. Screening/ Interviews

- Review candidate resumes/questionnaire
- Conduct Skype interviews
- Recommend candidates for Campus

II. Campus Visits/ Interviews

- 2 - 4 candidates
- Interviews/presentation to Committee
- Interviews w/Harlan Sands & Leadership
- Interviews w/others

III. Feedback/ Recommendation

- Feedback received/compiled from all interviews
- Recommendation to extend offer

PARTICIPANTS

Search Firm
Search Committee
includes Staff Senate Representative(s)

President & Provost
Staff & Faculty Senate Ex Committees
Peers
Direct Reports
Colleagues/Constituents

Search Committee

■ Offers Extended

- **Associate Vice President for Business Services**

Rep: Ginger Brown

- **Associate Vice President for Facilities Management**

Rep: Alex McWilliams

■ Active Searches

- **Associate Vice President for Human Resources**

Rep(s): Angela Lewis Klein & Laura McKinney

- Committee completed 1st round Skype interviews
- Evaluating additional candidates

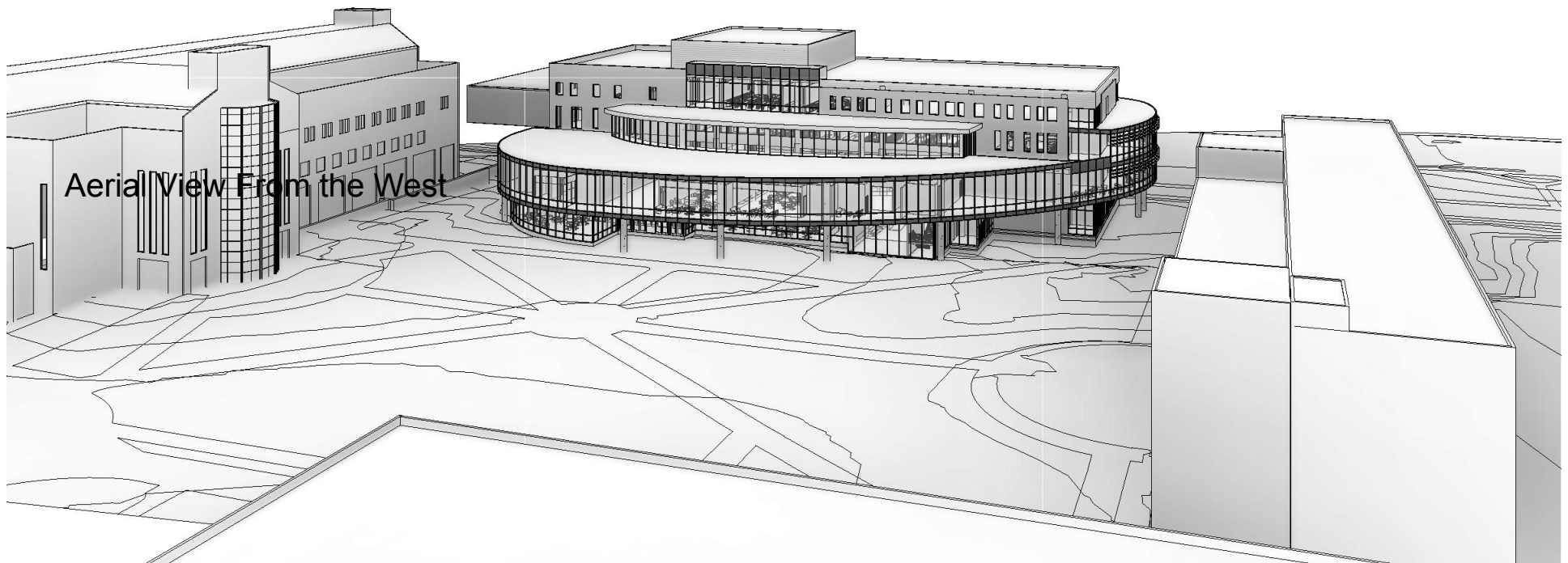
- **Associate Vice President Finance**

- **Associate Vice President Enterprise Risk Management (ERM), Audit & Compliance**

The University of Louisville Belknap Academic Building

UNIVERSITY OF
LO **I**







- Light Court



Key Dates

- **Design Process Begins** **May 2015**
- **Crawford Gym Demolition** **Aug 2016**
- **Construction Begins** **Aug 2016**
- **Classes begin in new building** **Aug 2018**

UNIVERSITY OF
LOUISVILLE.



Partnership

University of Louisville's "Preferred Credit Union."

- **Temporary Branch Now Open, Mon - Fri, 9 am - 4 pm**
 - **SAC Room 104 (previous intramural offices were located)**

- **Automated Teller Machines (ATM)**
 - **Proposed locations on Belknap & Health Sciences campuses**

- **New Belknap Campus Branch**
Grand Opening in August

- **Personalized Service**
 - **Contact: Tracy Coffey, Director of Campus Relations**
502-564-4775 or tcoffey@cwcu.org

QUESTIONS?