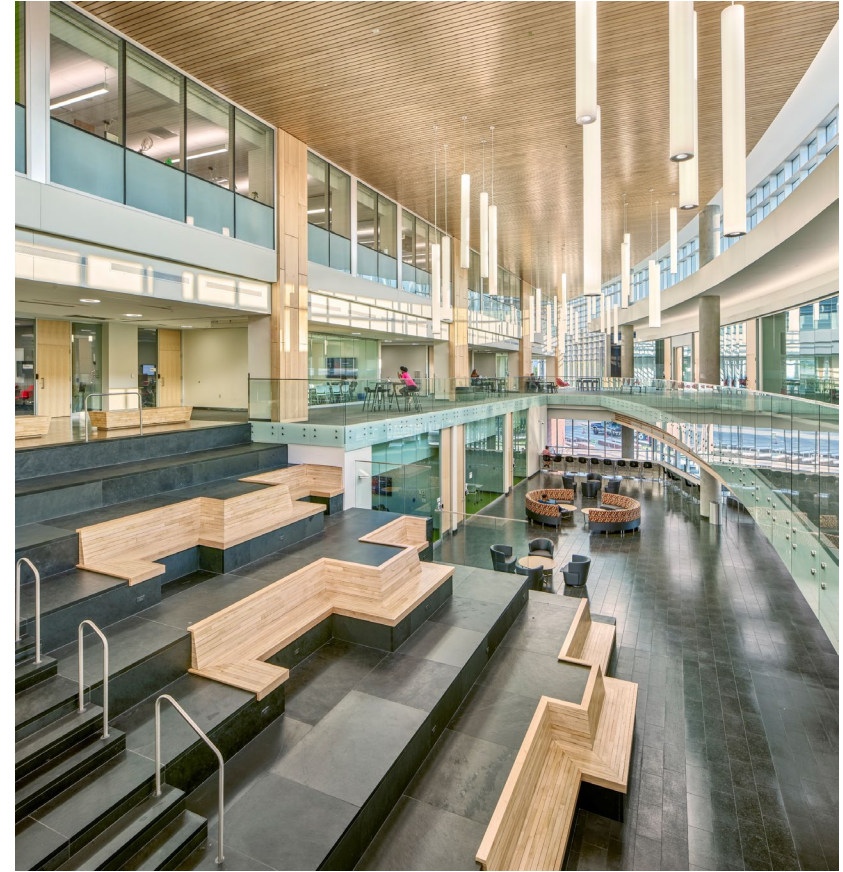


PLANNING DESIGN & CONSTRUCTION



YOUR VISION OUR MISSION

To enhance and support the mission of the university by creating and sustaining visually vibrant and functional working environments through design consultation, project management and space coordination.





WHAT WE DO

University Planning, Design and Construction (UPDC) is a division of the Office of Facilities Management. UPDC supports the planning and architectural services for new construction, renovation, expansion of existing facilities and installation of specialty equipment. UPDC's professional staff provide:

- Architectural Services
- Capital Planning
- Classroom Scheduling
- Construction Management
- Facilities Management
- Interior Design
- Master Planning
- Signage
- Space Programming

MITC REPROGRAMMING PHASE 1

- **Information Technology:** consolidate in MITC 041/043 & 102
- **Human Resources:** move from Cardinal Station to MITC 160/161
 - **HR Services:** renovate
 - **Audit Services:** move from Administrative Annex to Cardinal Station
 - **Auxiliary Services:** move from Grawemeyer to Administrative Annex
- **Emergency Operations Center:** move from HSC K Wing to MITC 03C

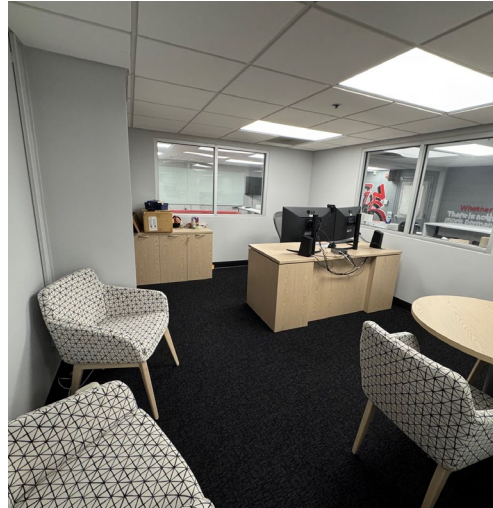
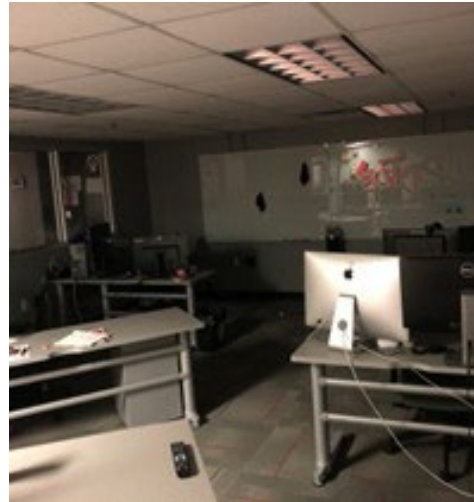
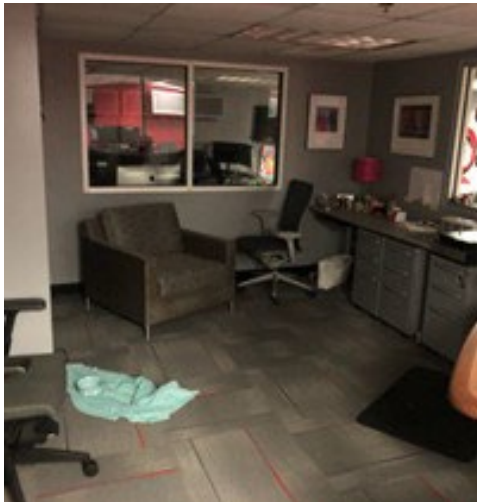


MITC PHASE 1: CIO & DIGITAL UX SERVICES

BEFORE



AFTER



MITC PHASE 1: HUMAN RESOURCES

BEFORE



AFTER

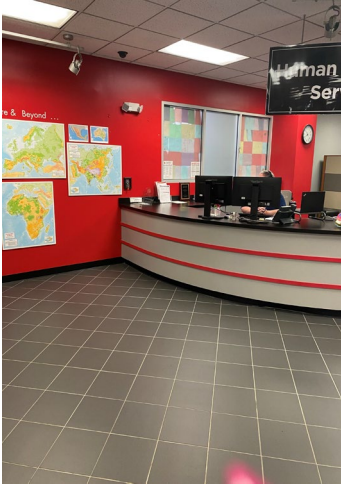


MITC PHASE 1: HR SERVICES

BEFORE



AFTER

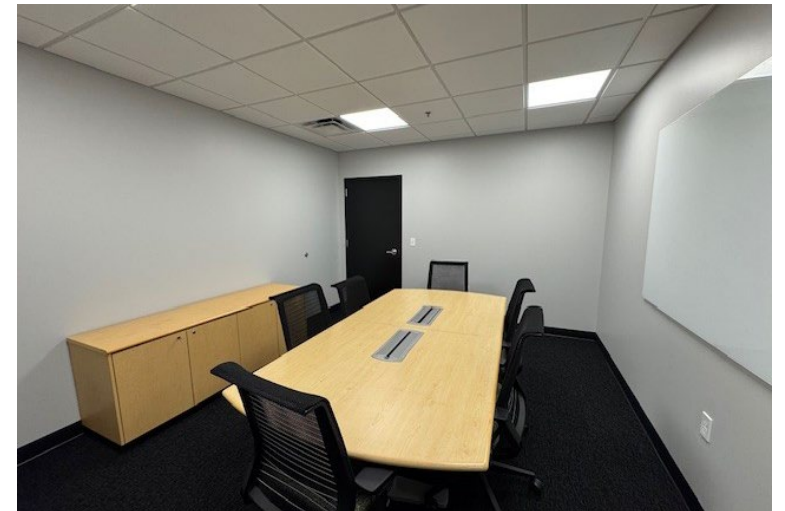


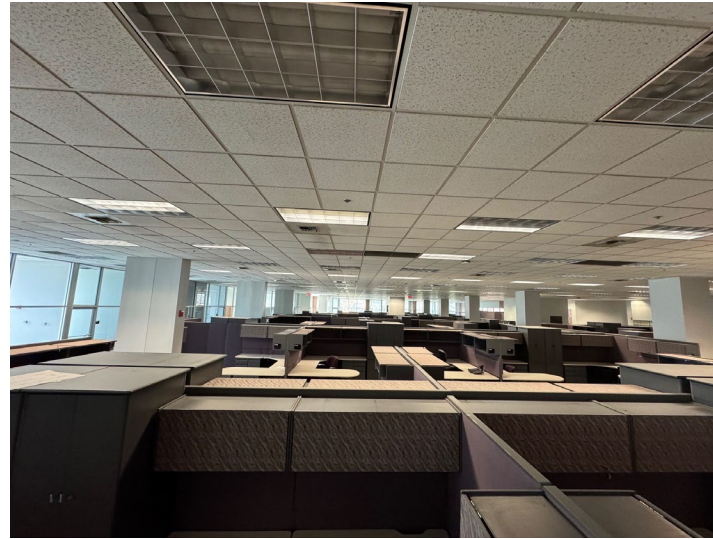
MITC PHASE 1: EMERGENCY OPERATIONS CENTER

BEFORE



AFTER





MITC REPROGRAMMING PHASE 2

- **Student Wellness Center:** program into MITC 109
 - **Campus Health:** move from Cardinal Station
 - **Counseling Center:** move from SAC
 - **Wellness Hub:** supporting eight dimensions of wellness
 - **Lactation/Sensory Room**
- **Former McAlister's Dining:** TBD