

# Overview of Services for Young Children

Child Find and Services

Tal Curry & Paula Goff  
Department of Public Health  
June 2012

## Session Objectives

- Learn the child find requirements of the Individuals with Disabilities Education Act
- Learn what public services are available for young children and their families
- Learn about new initiatives to support young children and their families

## Session Agenda

- Introductions
- Child Find
  - Requirements
  - Screening
- General Services for Young Children
  - HANDS
  - Head Start
  - Child Care
  - State-Funded Preschool

## Session Agenda

- Young Children with Autism Spectrum Disorders (ASD)
  - Current Status in Kentucky
- Early Identification
  - Help Me Grow
  - Act Early Campaign
- Services for Children with ASD
  - First Steps
  - Early Childhood Special Education
  - Early Childhood Mental Health
  - Michelle P Waiver

## Session Agenda

- Continuity of care for families
- Questions

## Child Find

○ IDEA requires that every state identify, locate and evaluate EVERY infant, toddler, and preschooler who are in need of early intervention or special education and related service.

## Responsibility

- Under Part C (infants and toddlers and their families), a child suspected (identified) of the need for services must be referred within 7 days.
- Under Part B (special education 3-21), a child or youth suspected of the need for services must be referred as soon as possible.

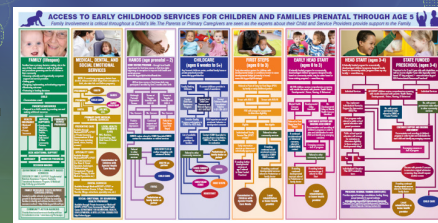
## Screening

- Well-baby/child screenings
- Community screenings
- Program-specific screening

## General Public Services for Young Children

- HANDS
  - Eligibility based on first-time parent status
- Child Care
  - Eligibility based on income
- Early Head Start/Head Start
  - Eligibility based on income
  - Early Head Start is not available statewide
- State-funded Preschool
  - Eligibility based on income or disability and age

## Access to Early Childhood Services Guide



<http://kypartnership.org/resource/early-childhood-services/>

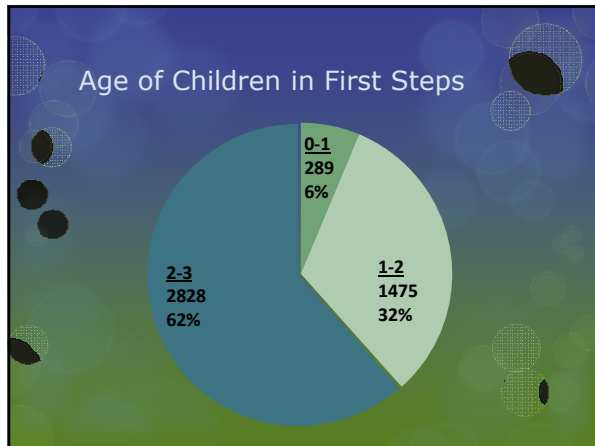


Let's take a break!

## Children with Autism Spectrum Disorders in Kentucky

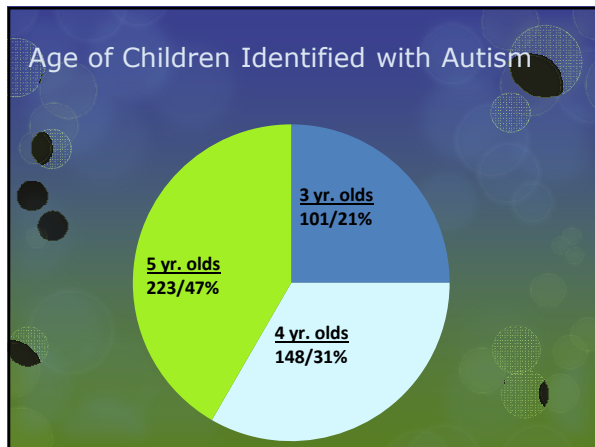
### First Steps

December 1 Child Count: 4592  
 Number with ASD Diagnosis: 12  
 Number with Developmental Delay: 4153



### Early Childhood Special Education (3-5)

- December 1 child count: 17,422
- Number with Autism: 472
- Number with Developmental Delay: 6754
- Number with Speech/Language: 9559



### Interesting trend...

- The number of children identified with autism in the schools continues to steadily rise until age 11.

### Early Identification Initiatives

- Help Me Grow
- Act Early Campaign

### Targeted Services for ASD

- First Steps
- ECMH
- Early Childhood Special Education
- Michelle P Waiver

## First Steps

- Statewide early intervention system for infants and toddlers with disabilities and their families.
- Consists of an array of supports and services individually designed for the child and family.
- Supports/services delivered through a Primary Service Provider model using a consultative approach.
- Emphasis is on building the capacity of the family to address their child's needs.

## ECMH

- Under the Community mental Health Centers (CMHC), Early Childhood Therapists have been trained to provide treatment in Early Childhood Evidence Based Practices
- At the heart of ASD Diagnosis are social emotional challenges

## Early Childhood Special Education

- Part B special education services begin at age 3.
- Every school district in the state must serve all eligible children
- Individualized Education Plan (IEP) developed that outlines the special education and related services child will receive.
- Services can be provided in a variety of settings.

## Michelle P Waiver

- The Michelle P. Waiver (MPW) is a home- and community-based waiver program within the Kentucky Medicaid program developed as an alternative to institutional care for individuals with intellectual or developmental disabilities. MPW allows individuals to remain in their homes with services and supports.

## MPW Eligibility

- Persons with a developmental or intellectual disability who require a protected environment while learning living skills, educational experiences, awareness of their environment and meet Medicaid financial eligibility requirements.
- Contact local Community Mental Health Center
- <http://chfs.ky.gov/NR/rdonlyres/93B63FC-A-802B-4D9A-B461-31AFC48B3378/0/MichellePWaiverAssessmEntContactList420publicist.pdf>

## Local Rehabilitation or Home Health Agencies

- Referral needed from primary care provider whether Medicaid or Private Insurance
- Local Rehab. Provider (OT, Speech, PT) will provide assessment for services
- Medical model offers advantage of consultation at each session but often means travel to appointments

### Issues for Families

- Transition between programs
- Parent support

### Transition

- Families and children need continuity between programs as children age.
- Collaboration and coordination required to result in effective transitions.

### Parent Support

- Support Groups- What local options are there?
- Peer to Peer Support- Ask for a family member who has been successful working with their young child with ASD.

### Questions

