

Learn the Signs.
Act Early.



Centers for Disease
Control and Prevention

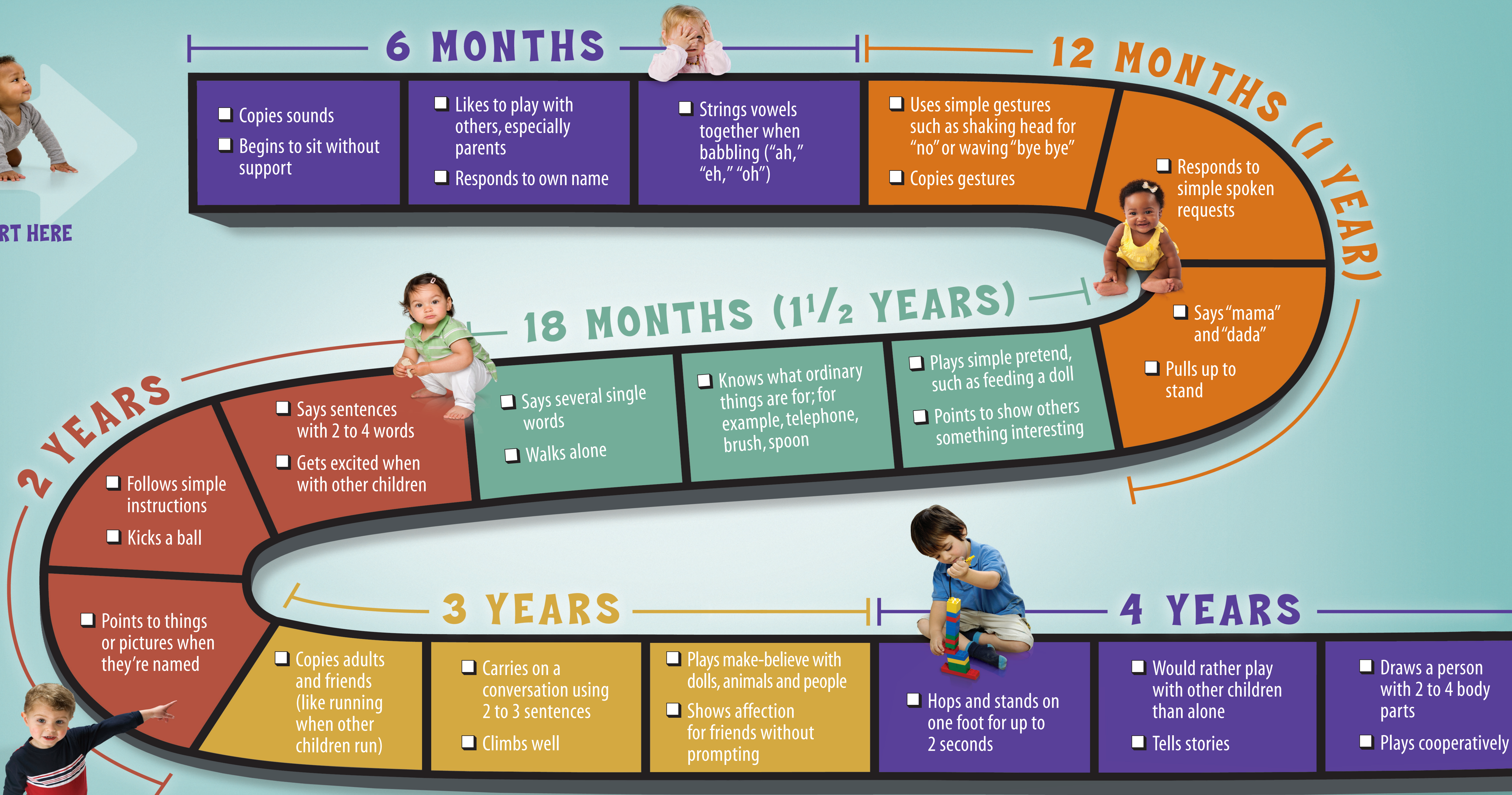
www.cdc.gov/actearly
1-800-CDC-INFO

Your Child's Early Development is a Journey

Look for these milestones in your own child and share your child's progress with the doctor at every visit.



START HERE



These are just a few of many important milestones to look for. For more complete checklists by age visit www.cdc.gov/ActEarly or call 1-800-CDC-INFO.

Kentucky "Learn the Signs. Act Early."

For more information call: 502.852.7799
<https://louisville.edu/education/kyautismtraining/actearly>

Seek early intervention, if your child is under age 3, contact the First Steps Program at (800) 442-0087.
Contact your local school district's special education department, if your child is age 3 or older to secure special education services your child is entitled to under the Individuals with Disabilities Education Act (IDEA).

