

Annual Report

July 2020 - June 2021

KENTUCKY AUTISM TRAINING CENTER

The Kentucky Autism Training Center is committed to improving the quality of life for Kentuckians affected by Autism Spectrum Disorder. We do this by bridging research to practice through training and collaboration.



1405 E. Burnett Avenue | Louisville, KY | 40217

www.kyautism.org | 502.852.4631 | katc@louisville.edu

Find us on Facebook, Twitter, and YouTube

Message from the Director



1405 E. Burnett Avenue
Louisville, Kentucky 40217

August 14, 2021

Dear Friends:

On behalf of the Kentucky Autism Training Center (KATC) Advisory Board, University of Louisville's College of Education and Human Development, and KATC staff, I am proud to present the KATC's 2020-2021 Annual Report for our 25th year of service to the autism community of Kentucky. Since the establishment of the KATC in 1996 by the Kentucky General Assembly, the need for integrated and systemic supports and services across all regions of the Commonwealth continues to increase. KATC, like the rest of the world, has experienced some significant challenges since March 2020 to the present in providing support to our families and service providers alike. While the pandemic has been a barrier to our in-person training, we have continued to provide services by expanding our virtual format resources.

This report represents a summary of our work in the areas of information dissemination, training, coaching and various other supports. Each section provides an overview of the services, supports provided, and information regarding endeavors with our collaborative partners. In addition to the areas detailed above, it is important to note the many hours KATC staff spend providing resources and supports via telephone calls, virtual consultations, committee meetings, community awareness events, and resource fairs even when a pandemic is not present. Individuals with autism, their families, and service providers need access and opportunities to promote the best possible outcomes in all areas affected by autism.

Establishing and maintaining collaborative partnerships with professionals and related agencies has proven to be productive in moving KATC toward the initial vision of improving the lives of those affected by autism. This has been especially important with the ever-changing and often challenging fiscal climate. With that said, we would like to specifically acknowledge our partnerships with the Regional Educational Cooperatives and Regional Early Childhood Training Centers, Human Development Institute at UK, Office of Vocational Rehabilitation, and the Office of Autism. Through these collaborations, the KATC has been successful at leveraging resources and bolstering efforts across the Commonwealth.

On behalf of the KATC Advisory Board and the KATC staff of eight, I would like to thank the many individuals and agencies who support the work of KATC. A special thank you to the KY General Assembly for their continued support.

Sincerely,

A handwritten signature in blue ink, reading 'R. Larry Taylor', is written over a faint, larger version of the same signature.

R. Larry Taylor, Ed.D.
Executive Director
1405 E. Burnett Avenue
Louisville, KY 40217

KATC Advisory Board

The KATC has an Advisory Board that advises the director in matters of policy, staffing, and operation. Board members are committed to the growth of the Kentucky Autism Training Center as it strives towards its mission to enhance supports for persons with autism by providing information, training and technical assistance to families and service providers across Kentucky. Board members are actively involved in the development of collaborative relationships. Members also provide input and expertise in the development, implementation and evaluation of services provided by the KATC. Unless restricted by their employment, members will assist the KATC to procure funding, in addition to state general funds, to accomplish its mission.

Our Advisory Board Members

- Meagan Brannon, Parent
- Gwenna Pennell, Grandparent
- Mindy Pfau, Parent
- Terri Srinivasan, Parent
- Norma Thomas, Parent
- Dr. Justin Cooper, Professional
- Dr. Nancy Lovett, Professional
- Kathy Meredith, Professional
- Dr. Elizabeth Sternberg, Professional
- S. Coy Travis, Professional

KATC Staff



R. Larry Taylor, Ed.D.
Executive Director



Heidi Cooley-Cook, M.Ed.
Assistant Director



Michelle Bush, M.A.E.
Program Coordinator



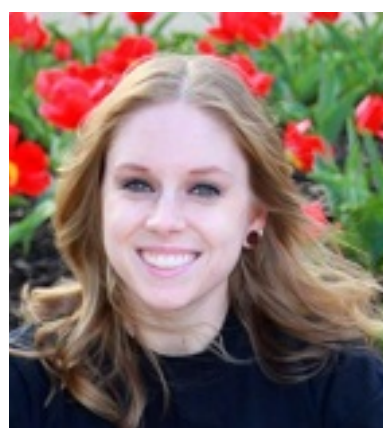
Michelle Antle, Ed.S.
Field Training Coordinator



Kim Howard, M.Ed.
Field Training Coordinator



Enid Hurtado, M.Ed.
Field Training Coordinator



Sarah Kaiser, M.Ed.
Field Training Coordinator



Mike Miller, M.Ed.
Field Training Coordinator



KATC's work during COVID-19

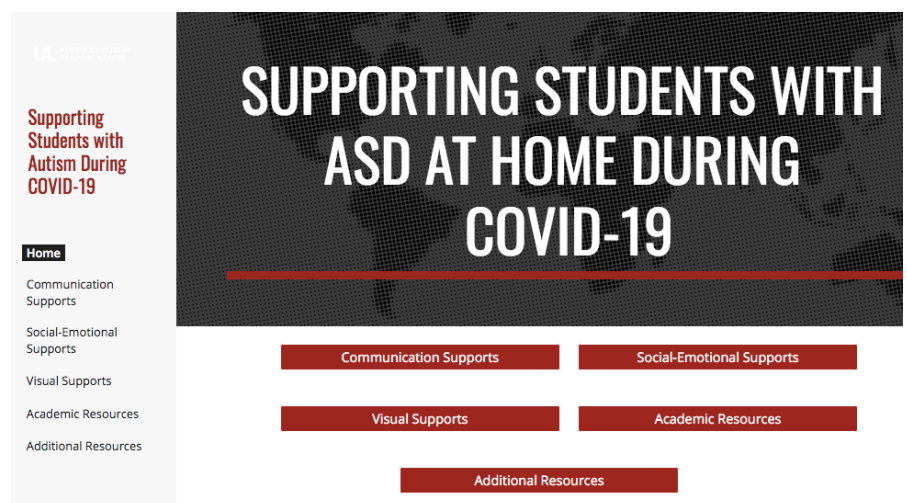
Throughout the pandemic KATC continued to work remotely as advised by the University of Louisville and local and state officials. Staff took advantage of countless virtual professional development opportunities while actively creating and conducting online trainings, consulting with families, etc. across the state. Focused on continuously providing individuals we serve with training, support, and resources during this unprecedented time.

On March 20, 2020 KATC launched a statewide website titled Supporting Students with Autism Spectrum Disorder During COVID 19. The website was created to support teachers, families and other professionals during the global pandemic. It contains information about communication, social emotional skills and visual supports. In addition the website provides additional resources from the CDC and state and was featured on the Kentucky Governor's website and reached not only Kentuckians but individuals across the nation and the globe.

July 1, 2020 -June 30, 2021

<https://bit.ly/ASDathome>

- 1,800 users (7,680 total)
- 5,335 page views (23,349 total)
- 61 countries reached



FACEBOOK



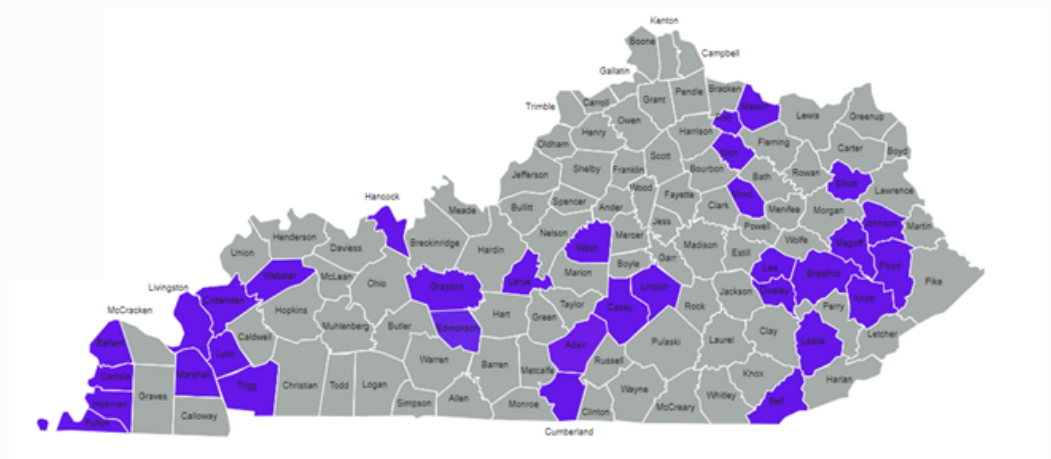
@Kyautism
386 Followers
879 Tweets

Kyautismtraining
97 Videos
1,097 Subscribers
176,126 Views

www.kyautism.org
85,455 Page Views

Ky Autism Listserv
413 Subscribers

In 2021, KATC has reached 87 of the 120 counties in Kentucky through our First Responder Trainings, collaborative work with the Office of Autism, Training Site Initiative, and other events/trainings.



Professional Trainings

ADOS-2 Autism Diagnostic Observation Schedule (ADOS -2)

KATC hosted two virtual Autism Diagnostic Observation Schedule (ADOS-2) trainings, December 7-8, 2020 and May 20-21, 2021. Given the virtual setting participants were able to participate from across the Commonwealth of Kentucky, elsewhere across the United states and even from other countries! The participants included clinical and school psychologists, psychiatrists, developmental pediatricians, therapists and others that have prior education, training, and experience in conducting assessments. The training was conducted by Rachel Hundley, Ph.D., Assistant Professor of Pediatrics, Division of Developmental Medicine; Assistant Professor of Psychiatry; Psychologist, Vanderbilt Kennedy Center Learning Assessment Clinic. Dr. Hundley is a clinical psychologist who specializes in the assessment and ongoing care for children with developmental disabilities, emotional and behavioral concerns, and autism spectrum disorder (ASD).



Training Site Initiative

The Kentucky Autism Training Center (KATC), in partnership with the Kentucky Department of Education (KDE), and the Regional Educational Cooperatives, provides learning opportunities to professionals and parents of students with autism. These opportunities are designed to increase the positive outcomes for learners with autism by the time they complete their high school experience. The "Training Site" initiative through the KATC has been a benefit to local public schools for over 10 years. Schools apply to participate, and if accepted, receive focused onsite or virtual technical assistance from KATC Field Training Coordinators and consultants from the Regional Special Education Cooperatives. The focus of this work is to enhance the school personnel's skills to serve students with autism. The selected sites for the 2020-2021 school year were the same as those the year previous. The COVID-19 pandemic brought unique challenges and opportunities and the staff felt that supporting these sites for another academic year would best meet the needs of school personnel and their students



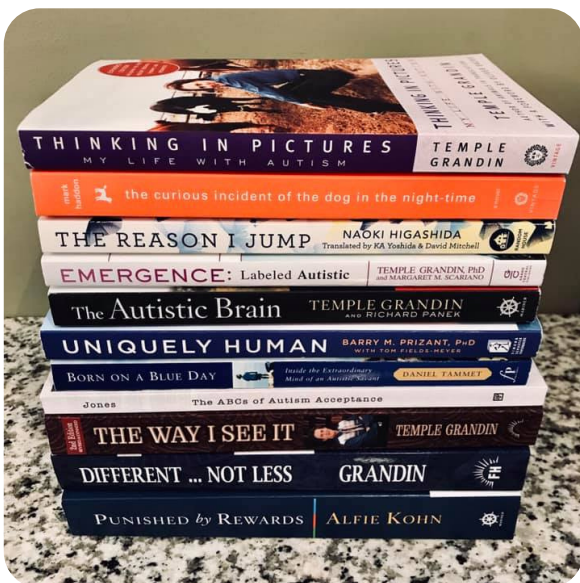
Training Site Initiative

Criterion:

- Administrative support and engagement
- Teacher who serves students with ASD
- Teacher who demonstrates responsiveness to professional learning
- Commitment to partner with the regional cooperative consultant
- School personnel demonstrate a desire to build district capacity
- Commitment to participate in regional cadre trainings related to autism

General Guidelines:

- School may apply for multiple classrooms
- Teacher completes the application form (collaboratively if multiple teachers)
- Involved personnel are each in good standing with school/district (teacher is not on a corrective improvement plan, student with autism is not a part of the dispute resolution process, etc.)
- All classroom staff and related service staff must review the application and sign to show their commitment
- District director of special education must be informed of the application submission



Training Site Initiative

2020-21 School Year Training Sites

Bracken County - Taylor Elementary
Bullitt County - Old Mill Elementary School
Calloway County – District Site
Christian County - District Site
Clark County - District Site
Corbin Independent - Corbin Primary School
Garrard County - Camp Dick Robinson Elementary School
Garrard County - Garrard Middle School
Garrard County - Paint Lick Elementary School
Graves County - District Site
Greenup County - McKell Preschool
Hardin County – James T. Alton Middle School
Henderson County - District Site
Henry County - Henry County Middle School
Henry County - New Castle Elementary School
Jefferson County - The Binet School
Mayfield Independent - District Site
McCracken County - District Site
McCreary County - McCreary Central High School
McLean County - McLean County Middle School
Metcalf County - Metcalfe County Middle School
Morgan County - Morgan County Middle School
Morgan County - Wrigley Elementary School
Ohio County - Wayland Alexander Elementary School
Paducah Independent - Paducah Head Start Preschool
Pike County - Mullins Elementary School
Pike County - Belfry Elementary School
Pike County - Bevins Elementary School
Russellville Independent - Russellville Preschool Academy
Simpson County - Franklin Elementary
Simpson County - Simpson Elementary
Walton-Verona Independent - Walton-Verona Elementary

First Responder Initiative

The KATC offers a two-hour training currently approved for two CE/Contact Hours from the KY Board of Emergency Medical Services (KBEMS) and KY Fire Commission State Fire Rescue Training. The FREE training is offered throughout the state of Kentucky and can be provided multiple times to allow greatest participation among agency personnel.

Topics include:

- Explaining what autism is, including characteristics and spectrum of how these characteristics are expressed among individuals with autism
- Reviewing frequently used terms, interventions, and common types/titles of caregivers
- Understanding how to respond to and interact with individual(s) with autism, including communication strategies
- Identify de-escalation strategies that could be utilized with individuals with autism
- Reviewing local, state-wide, and national resources related to autism



18

**FIRST RESPONDER
TRAININGS**

5

**DIFFERENT
CITIES**



First Responder Initiative

Autism and the First Responder Trainings:

February 2021

Autism and the First Responder, Lexington (District 6)
Autism and the First Responder, Lexington (District 6)
Autism and the First Responder DOCJT Contemporary Policing in the 21st Century, Louisville (District 3)
Autism and the First Responder DOCJT Contemporary Policing in the 21st Century, Louisville (District 3)

March 2021

Autism and the First Responder, Lexington (District 6)
Autism and the First Responder, Lexington (District 6)
Autism and the First Responder, DOCJT Contemporary Policing in the 21st Century, Elizabethtown (District 2)
Autism and the First Responder, DOCJT Contemporary Policing in the 21st Century, Elizabethtown (District 2)

April 2021

Autism and the First Responder, DOCJT Contemporary Policing in the 21st Century, Elizabethtown (District 2)
Autism and the First Responder, DOCJT Contemporary Policing in the 21st Century, Elizabethtown (District 2)
Autism and the First Responder, DOCJT Contemporary Policing in the 21st Century, Louisville (District 3)
Autism and the First Responder, DOCJT Contemporary Policing in the 21st Century, Louisville (District 3)
Autism and the First Responder, Lexington (District 6)
Autism and the First Responder, Lexington (District 6)

May 2021

Autism and the First Responder, DOCJT - Contemporary Issues in Policing, Erlanger (District 4)
Autism and the First Responder, DOCJT - Contemporary Issues in Policing, Erlanger (District 4)

June 2021

Autism and the First Responder, Bowling Green (District 2)
Autism and the First Responder, Lexington (District 6)



Yellow Dot Program



The Yellow Dot Program alerts First Responders at crash scenes of critical medical information that could save a life.

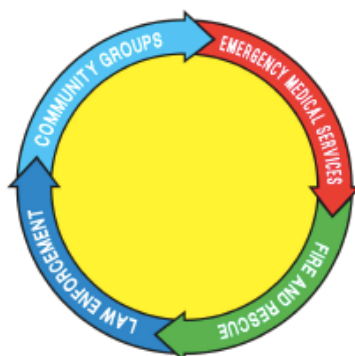
Participants put a decal on their vehicle's rear windshield and place a completed Yellow Dot pamphlet in their glove compartment. The information included could help emergency responders make split second decisions about how to assist the individual with autism or other medical needs.

Medical Conditions/Recent Surgeries	
Date this information was last reviewed and/or updated: ____ / ____ / 20 ____	
<input type="checkbox"/> I HAVE NO KNOWN MEDICAL CONDITIONS or	
Please check all the following that apply to you:	
<input type="checkbox"/> Abnormal EKG	<input type="checkbox"/> Lung/Breathing problems i.e. COPD, Emphysema, Asthma
<input type="checkbox"/> Chest pain (Angina)	<input type="checkbox"/> Alzheimer's (Dementia/Alzheimer's)
<input type="checkbox"/> Heart Attack	<input type="checkbox"/> Diabetes-take insulin injections (Diabetes/Insulin Dependent)
<input type="checkbox"/> High Blood Pressure	<input type="checkbox"/> Diabetes-take pills
<input type="checkbox"/> Heart Rhythm issues (cardiac dysrhythmias)	<input type="checkbox"/> Low sugar (Hypoglycemia)
<input type="checkbox"/> Pacemaker	<input type="checkbox"/> Vision Problems (Eye Surgery)
<input type="checkbox"/> Internal Heart Defibrillator	<input type="checkbox"/> Glaucoma
<input type="checkbox"/> Heart Surgery/Treatment for blockages (Coronary Bypass Grafts, Stents)	<input type="checkbox"/> Broken Bones (Fractures)
<input type="checkbox"/> Heart Surgery for valve problems	<input type="checkbox"/> Overheat easily (Malignant Hyperthermia)
<input type="checkbox"/> Stroke	<input type="checkbox"/> Pregnant: Date due: _____
<input type="checkbox"/> Seizure Disorder	<input type="checkbox"/> Any metal plates, joints, etc.?
<input type="checkbox"/> Previous head injury/surgery Date: _____	
<input type="checkbox"/> Adrenal Insufficiency	
<input type="checkbox"/> Bleeding problems (disorder)	
<input type="checkbox"/> Dialysis (Hemodialysis)	
<input type="checkbox"/> Kidney Problems	
<input type="checkbox"/> Kidney (Renal) Failure	
<input type="checkbox"/> Anemia (Hemolytic Anemic)	
<input type="checkbox"/> Sickle Cell anemia	
<input type="checkbox"/> Hepatitis	
<input type="checkbox"/> HIV/AIDS	
<input type="checkbox"/> Leukemia (Cancer: type)	
<input type="checkbox"/> Other Cancer	
<input type="checkbox"/> Laryngectomy	
<input type="checkbox"/> Autism	

Allergies (Check ALL That Apply)	
<input type="checkbox"/> NO KNOWN ALLERGIES	
<input type="checkbox"/> LATEX	<input type="checkbox"/> Novocaine
<input type="checkbox"/> Aspirin	<input type="checkbox"/> Penicillin
<input type="checkbox"/> Barbiturates	<input type="checkbox"/> Sulfas
<input type="checkbox"/> Codeine	<input type="checkbox"/> Tetracycline
<input type="checkbox"/> Demoral	<input type="checkbox"/> X-Rays Dyes
<input type="checkbox"/> Insect Stings	<input type="checkbox"/> Xylocaine
<input type="checkbox"/> Lidocaine	<input type="checkbox"/> Other: List Below
<input type="checkbox"/> Morphine	

Materials provided by University of Louisville
 Kentucky Autism Training Center
kyautism.org

KATC continues to provide Yellow Dots to Kentuckians with autism and their families. Yellow Dot stickers and information folders are available for free and are prepared in-house at the KATC and with the help of volunteers.



The Yellow Dot Program

The information contained in this folder is for first responder use for accident or other medical emergency to assist EMS, Law Enforcement, and Fire and Rescue personnel during the "golden hour."

Communication Style: _____

Calming Strategies: _____

Triggers/Fears: _____

Interests/Attractions: _____

To request a Yellow Dot brochure visit www.kyautism.org

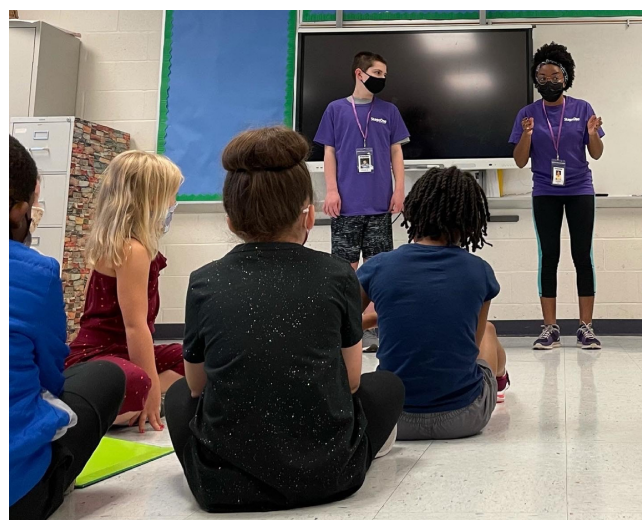
Consultation

KATC Staff consult with individuals, families, and professionals on a variety of topics including sensory friendly performances, behavioral concerns, academic issues, navigating resources, employment, etc. Additionally, KATC Staff often collaborates with groups, agencies, and organizations on matters that impact the lives of autistic citizens in Kentucky.

817 hours

**OF CONSULTATION AND
COLLABORATION WITH:**

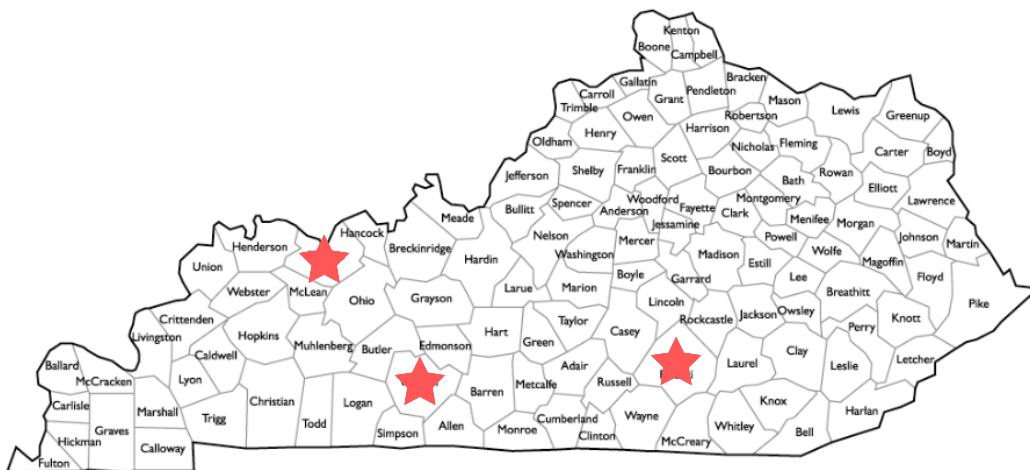
- Arts for All KY
- AUK/KASA
- Bowling Green Medical Personnel
- Bluegrass Behavioral Health Group
- Caregivers and Families in Kentucky and Indiana
- FEAT of Louisville
- Fuller Life Counseling
- HIVE
- KAITTER Clinic
- KY Center for School Safety
- Kentucky Advisory Council on Autism (KYACA)
- KY-SPIN
- Lifeworks
- Louisville Ballet
- National Autism Network of Statewide Implementers (NANSI)
- Norton Children's Autism Clinic
- Office of Autism
- Office for Children with Special Health Care Needs
- Parent Support Groups
- Stage One
- University of Louisville faculty, staff and students
- University of Louisville College of Education and Human Development
- WKU-Family Resource Program
- WKU-LifeWorks



Additional Partnerships

Office for Children with Special Health Care Needs

The Kentucky Autism Initiative in Treatment, Training, and Research (KAITTR) provides diagnostic and/or treatment clinics in collaboration with the Office for Children for Special Health Care Needs (OCSHCN) and physicians from the Norton Children's Autism Center and Development Center in 5 regions in Kentucky. The team typically consists of a developmental pediatrician, child psychiatrist, and a neurologist who work in conjunction with the OCSHCN staff. KATC provided initial and on-going training for OCSHCN staff at these clinics. The KATC Field Training Coordinators continue to provide ongoing support to families, staff and others by identifying resources and services to address the child's specific needs, especially related to the child's school programming. During the 2020-2021 school year, the KATC staff provided 36 hours of support and collaboration to patients served at the Owensboro and Bowling Green OCSHCN clinics.



Kentucky Advisory Council on Autism (KYACA) *delete Office of Autism

KATC's Executive Director is a Governor-appointed member on the Kentucky Advisory Council on Autism. Additionally, KATC staff are active participants in each of the Council's three subcommittees: Early Childhood, School-Age, and Adolescent/Adult. Collaboratively with other KYACA members, the KATC supports the work of Kentucky's Office of Autism and the KYACA.

Additional Trainings and Events

July 2020

- How to Support Clients through Covid Transitions, KYSteps Professional Development Training, Human Service Professionals -Bowling Green (District 2)
- Autism 101 for Support Staff, KEDC Virtual Summer Institute, School Personnel - Lewis. Carter. Rowan. Boyd (District 4)
- Autism Awareness, Human Services Training for Division of Emergency Management, First Responders, Human Service Professionals Online (District 3)
- EBPs for Students with Autism in the Reg Ed Setting, Hardin Co PD Day, Elementary, Middle and High School Personnel- Elizabethtown (District 2)
- Structured teaching at Home, Kvec Virtual Institute, School Personnel - Hazard (District 5)
- Supporting Student with Autism during Puberty, KEDC Virtual Summer Institute, School Personnel -Multiple KEDC counties plus Wolfe (District 4)
- Meeting Sensory Needs for Children with Autism, KEDC Virtual Summer Institute, School Personnel- KEDC districts (District 4)
- EBPs for Students with ASD, Hardin Co PD Day, Preschool and Elementary School Personnel - Elizabethtown (District 2)
- Visual Supports in the Preschool Classroom, Headstart PD Event, Human Service Professionals, Headstart staff - Paducah (District 1)
- Regional Headstart Conference, Behavior Interventions for Students with Autism, Headstart Training Event, Human Service Professionals, Headstart Staff -Paducah (District 1)
- Headstart Regional Training (attendees from all counties in Western KY region),
- Virtual information dissemination for Caregivers, First Responders, Human Service Professionals, Medical Personnel
- Behavioral Interventions for the Preschool Classroom, Graves County Preschool PD Day, School Personnel For district training site team, Mayfield - (District 1)

August 2020

- Considerations for Preparing Your Child for School (COVID), Family Resource Center Parent Coffee Hour, Caregivers -Bowling Green (District 2)
- Webinar for Caregivers, Human Service Professionals, School Personnel -All over Kentucky, mostly OVEC (District 4)
- Intro to ASD, Old Mill Elementary PD and Planning Meeting, School Personnel, Online
- Intro to ASD training for whole staff (1.5 hrs) and Planning Meeting with small team, Supporting Our Students with ASD, Simpson Elementary PD Day, School Personnel - Franklin (District 1)
- Webinar for statewide School Personnel
- Understanding and Responding to Challenging Behavior, St. Joseph Children's Home Staff Training, Caregivers, Human Service Professionals, Medical Personnel, School Personnel -Online (District 4)

Additional Trainings and Events

September 2020

- Medical Personnel, NCAC- Louisville (District 3)
- Day Springs -Louisville (District 3)
- WKEC ASD Cadre: Learn and Churn Sessions ASD Cadre: Learn and Churn School Personnel - Murray (District 1)
- GRREC ASD Cadre, School Personnel -Bowling Green (District 2)
- Visual Supports in the Preschool Classroom for Students with ASD, Headstart State Conference- Frankfort (District 6)
- Starting Parent Support Groups, KY-SPIN Training, Caregivers, Human Service Professionals, Individuals with Autism, Medical Personnel, School Personnel-Louisville (District 3)
- Student Affairs and COVID19, Student Affairs, Human Service Professionals, Individuals with Autism, Medical Personnel, School Personnel, higher ed -Louisville (District 3)
- U of L Residents Autism Resources for Physicians, Medical Personnel - Louisville (District 3)

October 2020

- School Personnel District Training Site Webinar - Winchester (District 2)
- Growing Your Own Autism Team: The Western Kentucky Way
- OCALI (pre-recorded event) with Sherida Gentry -(recording site) Bowling Green (District 2)
- Executive Functioning, KY-SPIN Tuesday Tips Webinar Caregivers, Human Service Professionals, School Personnel Online -Stearns (District 5)
- Social Narratives, KY-SPIN Tuesday Tips Webinar Caregivers, School Personnel, Online
- Using Visuals to Teach Play and Academics in the Preschool Setting RTC Training Series, School Personnel-Murray (District 1)

November 2020

- WKEC Learn and Churn, School Personnel - Murray (District 1)
- How to use Time Delay in the Reg Ed Setting, McLean Co Middle Training Site, School Personnel - Calhoun (District 1)Trained reg ed and spec ed staff via Zoom , Growing Your Own Autism Team: The Western Kentucky Way
- OCALI, Caregivers, Human Service Professionals, Individuals with Autism, School Personnel - Ohio
- Autism: From Recognition to Intervention, Community Action of Southern Kentucky (Headstart Conference) School Personnel, Headstart - Bowling Green (District 2)

Additional Trainings and Events

December 2020

- School Personnel Winchester Webinar was sponsored by CKEC (District 6)
- Executive Functioning (Part 2) - Across the Lifespan KY-SPIN's Tuesday Tips, Caregivers, Human Service Professionals, School Personnel - Online)
- School Personnel all over CKEC region (District 6)
- School Personnel -Winchester (District 6)

January 2021

- Using Functional Communication Planning, WKEC ASD Cadre, School Personnel -Murray (District 1)
- Using Functional Communication Planning, WKEC ASD Cadre, School Personnel - Murray (District 1)
- CEC-DADD Conference 2021, Go, Backpack, Go! Ensuring safety During Times of Crises, School Personnel -Tampa and national (District 3)
- CEC-DADD Conference 2021, Go, Backpack, Go! Ensuring safety During Times of Crises, School Personnel-Tampa and national (District 3)
- Allfor OneWorking together to support students with Autism Spectrum Disorder with Evidence Based Practices, 2021 CEC- DADD Conference, School Personnel, CEC-DADD participants - Clearwater, FL and National (District 3)
- Allfor OneWorking together to support students with Autism Spectrum Disorder with Evidence Based Practices, 2021 CEC- DADD Conference, School Personnel, CEC-DADD participants - Clearwater, FL and National (District 3)
- Parent Trainings: Behavior Management, Autism 101, WKU Family Resource Program, Caregivers, Zoom recordings, Recorded 2 Parent Trainings for WKU Family Resource Program - Bowling Green (District 2)
- Parent Support Group, Parent Trainings: Behavior Management, Autism 101.WKU Family Resource Program, Caregivers, Zoom recordings, Recorded 2 parent trainings for WKU Family Resource Program Parent Support Group - Bowling Green (District 2)
- School Personnel, OVEC members -Shelbyville (District 3)
- School Personnel, OVEC members -Shelbyville (District 3)

February 2021

- IEP Considerations during Covid (co-presented with Michelle Black, DOSE of Warren County Schools) WKU Parent Coffee Hour, Caregivers, Human Service Professionals -Bowling Green (District 2)
- IEP Considerations during Covid (co-presented with Michelle Black, DOSE of Warren County Schools) WKU Parent Coffee Hour, Caregivers, Human Service Professionals - Bowling Green (District 2)
- Using a FCT Tool for Planning Communication Instruction, WKEC Autism Cadre, School Personnel - Murray (District 1)
- Using a FCT Tool for Planning Communication Instruction, WKEC Autism Cadre, School Personnel -Murray (District 1)

Additional Trainings and Events

March 2021

- School Personnel - Winchester (District 6)
- School Personnel - Winchester (District 6)
- Supporting Parents of Children with Special Needs in a Pandemic Series, WKU Family Resource Center Parent Coffee Hour, Caregivers, Human Service Professionals - Bowling Green (District 2)
- Supporting Parents of Children with Special Needs in a Pandemic Series, WKU Family Resource Center Parent Coffee Hour, Caregivers, Human Service Professionals - Bowling Green (District 2)
- IEP FAQ for Parents, Hart of Autism Parent Support Group, Caregivers - Munfordville (District 2)
- IEP FAQ for Parents, Hart of Autism Parent Support Group, Caregivers - Munfordville (District 2)
- GRREC Autism Cadre, GRREC ASD Cadre, School Personnel -Bowling Green (District 2)
- School Personnel -Ashland (District 4)
- KEDC Dose Meeting, School Personnel - Ashland (District 4)
- KEDC Dose Meeting, GRREC Autism Cadre, GRREC ASD Cadre, School Personnel - Bowling Green (District 2)
- Caregivers, Human Service Professionals, School Personnel -Online
- Caregivers, Human Service Professionals, School Personnel -Online

April 2021

- Using Visual Supports in the HeadStart Classroom, KHSA 2021 Conference, School Personnel - Frankfort (District 6)
- Using Visual Supports in the HeadStart Classroom, KHSA 2021 Conference, School Personnel -Frankfort (District 6)
- Parent Support Group Role Out "The Village", WKU FRP Parent Coffee Hour, Caregivers, Human Service Professionals -Bowling Green (District 2)
- Parent Support Group Role Out "The Village", WKU FRP Parent Coffee Hour, Caregivers, Human Service Professionals - Bowling Green (District 2)
- Caregivers, First Responders, Human Service Professionals, Medical Personnel, School Personnel - Louisville (District 3)
- Caregivers, First Responders, Human Service Professionals, Medical Personnel, School Personnel - Louisville (District 3)
- Setting up the Physical Space for Success!, StageOne Family Theatre DramaWorks Camp, Theatre staff - Louisville (District 3)
- Setting up the Physical Space for Success!, StageOne Family Theatre DramaWorks Camp, Theatre staff - Louisville (District 3)

Additional Trainings and Events

May 2021

- Cognitive Behavioral Intervention in the Autism Resource Classroom, Plano Elem (follow up training for previous school site), School Personnel -Bowling Green (District 2)
- Cognitive Behavioral Intervention in the Autism Resource Classroom, Plano Elem (follow up training for previous school site), School Personnel -Bowling Green (District 2)
- Autism in the Reg Ed Classroom: Strategies that Work, Butler Co Staff PD Day, School Personnel - Morgantown (District 2)
- Tips to Help with Summer Regression, KY-SPIN Tuesday Tips, Caregivers, School Personnel - Online
- Tips to Help with Summer Regression, KY-SPIN Tuesday Tips, Caregivers, School Personnel -Online
- Tips for an Au-Some Summer at Camp!, StageOne DramaWorks Camp, Human Service Professionals, School Personnel - Online
- Tips for an Au-Some Summer at Camp!, StageOne DramaWorks Camp, Human Service Professionals, School Personnel -Online

June 2021

- Caregivers, First Responders, Human Service Professionals, Individuals with Autism, Medical Personnel, School Personnel, Families - Louisville (District 3)
- Teaching Executive Functioning in the Early Childhood Setting, System of Care Academy, Human Service Professionals, School Personnel - Louisville (District 3)
- Caregivers training - Louisville (District 3)
- School Resource Officers and Students with Disabilities, NKCES Webinar, First Responders, School Personnel - Online
- 10 Tips for Supporting Learners on the Autism Spectrum, Fort Knox Child Youth Services, School Personnel Fort Knox

Additional Trainings and Events

To request or to receive additional details about a training, visit our website www.kyautism.org.

- **Training for First Responders**

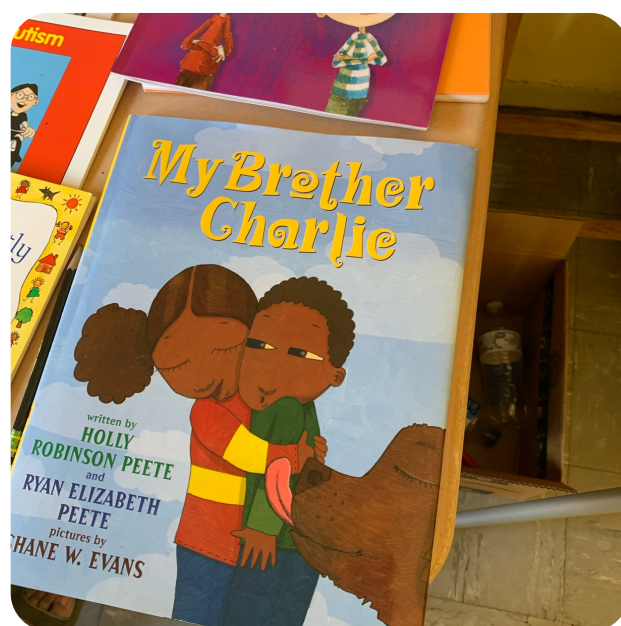
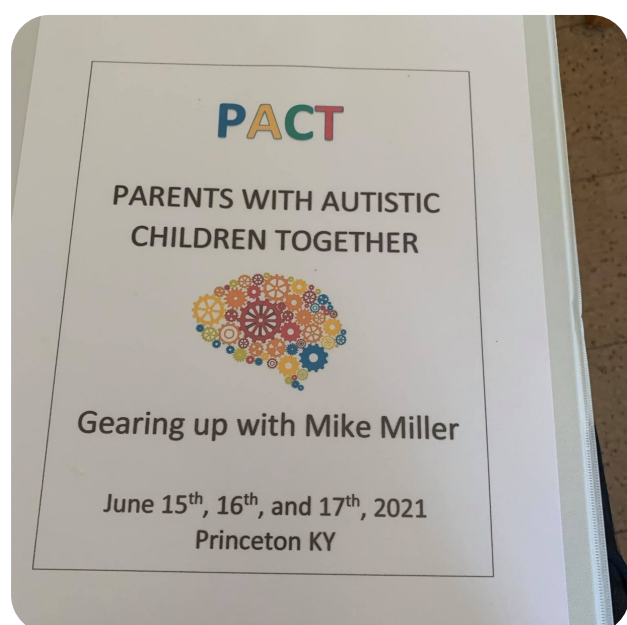
The KATC staff can provide the free Autism and First Responder training at a variety of times and days of the week to best meet the needs of the requesting agency. For example, one agency needed a single session with 10 participants, while another agency requested 1,200 individuals be trained by offering the training over 20 times. The First Responders training provides the opportunity for discussion, brainstorming and problem solving, as well as enhanced connections amongst participants.

- **Training for Professionals**

The KATC staff can provide training on autism and related topics to professional and community groups across Kentucky. The KATC encourages professional groups to work in collaboration with KATC to design a presentation to meet the group's needs.

- **Training for Groups**

Autism related support groups and other family groups across Kentucky can access workshops on a variety of topics free of charge. Although we have a list of suggested topics on our website, we encourage family groups to work in collaboration with our trainers to design a presentation to meet the support group's needs.



How to Support KATC

General Donations

The KATC's asks that you please make a donation to aid in continuing our mission to improve the lives of individuals affected by autism.

Donations will be used for, but not limited to, the following:

- Continue and increase the number of regional trainings and workshops we offer throughout the state
- Continue and increase the number of service provider trainings
- Increase First Responder trainings (Fire Fighters, EMS, Police Officers, etc.) throughout the state and provide them with communication boards as requested
- Continue distributing Yellow Dot Brochures to individuals and agencies across the state
- Develop and distribute other resources for individuals with autism and those that love and support them
- Provide KATC staff with professional development opportunities to keep them abreast of the most current resources, supports, etc. pertaining to autism to assist individuals and their families

Donations can be made online or mailed.

Online Donations:

<https://tinyurl.com/DonatetoSupportKATC>

Mailed Donations:

University of Louisville
1000 University of Louisville
Louisville, KY 40208

*Add KATC Gift account to note line of your check



Scan Here
to Donate