

## PROPER DISPOSAL OF EMPTY NON-REFILLABLE CYLINDERS

**SCOPE:** This procedure applies to empty non-refillable cylinders such as propane, butane, MAPP gas, and calibration gases.

**EXCLUSIONS:** This procedure should not be used on any partially-used cylinders or aerosol cans. Additionally, this procedure cannot be used on empty cylinders of poisonous gas, pyrophoric gas, or ammonia. All of these cylinders, as well as partially-filled aerosol cans, must be turned in to DEHS for chemical waste disposal. All refillable-type cylinders should be returned to supplier.

**QUESTIONS/CONCERNS:** Please direct to DEHS Hazardous Waste Coordinator at 502-852-2956 or 502-852-6670.

**SAFETY START-UP:** Put on safety glasses or goggles before you begin.

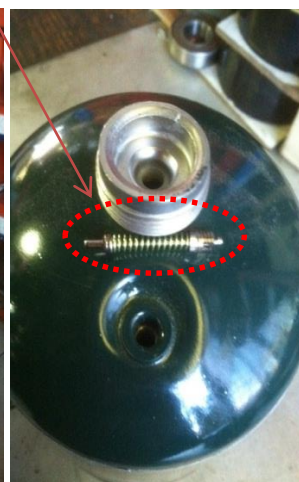
### STEP 1 -

Attach hand torch to cylinder.  
Depress ignitor to verify  
cylinder is empty.



### STEP 2 -

Using tire core tool, remove fill port stem.



### STEP 3 -

Deface product label.  
Mark as "EMPTY".



### STEP 4 -

Discard cylinder into  
regular trash can.

