

Shower and Eye Wash Safety

**Safe Science =
Good Science**
July 17, 2024

Awareness

- In the event of a potential chemical burn, it is essential to have emergency equipment readily available in the laboratory to effectively minimize the impact of exposure to toxic or hazardous chemicals.

Monthly Testing Requirements

- Physical Plant conducts monthly inspections to ensure that the safety showers and eyewash stations are functioning properly.
- Ensure the area is clear and that nothing blocks the safety shower and eye wash station to ensure that the inspections take place.
- If items are blocking the area, physical plant will not be able to conduct the monthly inspection.

Contact UofL Physical Plant

Belknap Campus: 502-852-6241

Health Science Center: 502-852-5695

Shelby Campus: 502-852-6241

Video: [Shower and Eye Wash Safety](#)

Please refer to [Robert's Story](#) in the attached PDF for real life examples on how the Eyewash Station is used.

For questions or concerns please call DEHS at 852-6670 or email dehsubm@louisville.edu.

Safety showers and eyewash stations are essential safety devices designed to rinse off toxic or harmful chemicals promptly in the event of spills or exposure incidents in the workplace. **Safety shower/eyewash stations can be located in laboratory rooms or hallways near you.** These stations should be no more than 10 seconds away from your lab stations for immediate response.

How to Use

Using the Safety Shower:

1. Know the exact location of the safety shower's water shut on/off valve/lever.
2. Avoid placing any electrical equipment near the unit.
3. If your clothing is contaminated with a chemical, remove them (or have a lab member help you) before getting under the shower.
4. Once the lever has been pulled, the shower will discharge water at a specific rate and volume for at least 15 minutes.
5. Continue under the shower for at least 15 minutes to ensure thorough decontamination before seeking medical attention.

Using the Eyewash Station:

1. If something gets into your eyes, immediately go towards the nearest eyewash station as quickly and safely as possible.
2. Turn your eyewash station on and use your hands/fingers to open and to keep your eyes open.
3. Flush your eyes thoroughly for at least 15 minutes and seek immediate professional medical attention.

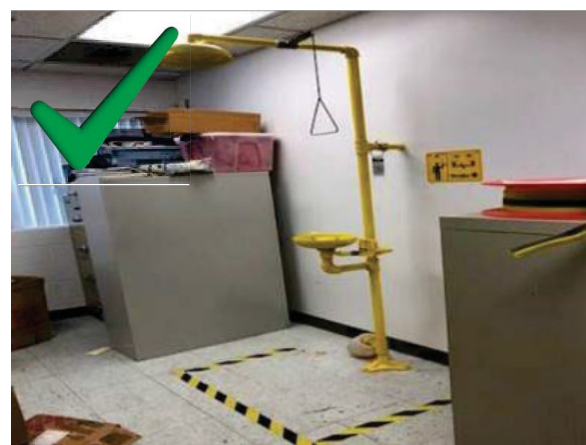
Have a lab member call 911 while you are flushing your eyes.

Important Reminder:

Ensure that safety showers and eyewash stations are readily accessible during emergencies and must never be blocked. If items obstruct these areas, Physical Plant will be unable to conduct the monthly inspection. Laboratory staff must ensure these spaces are clear for inspections to occur.



Blocked safety shower obstructed by items



Accessible safety shower with cleared surroundings