

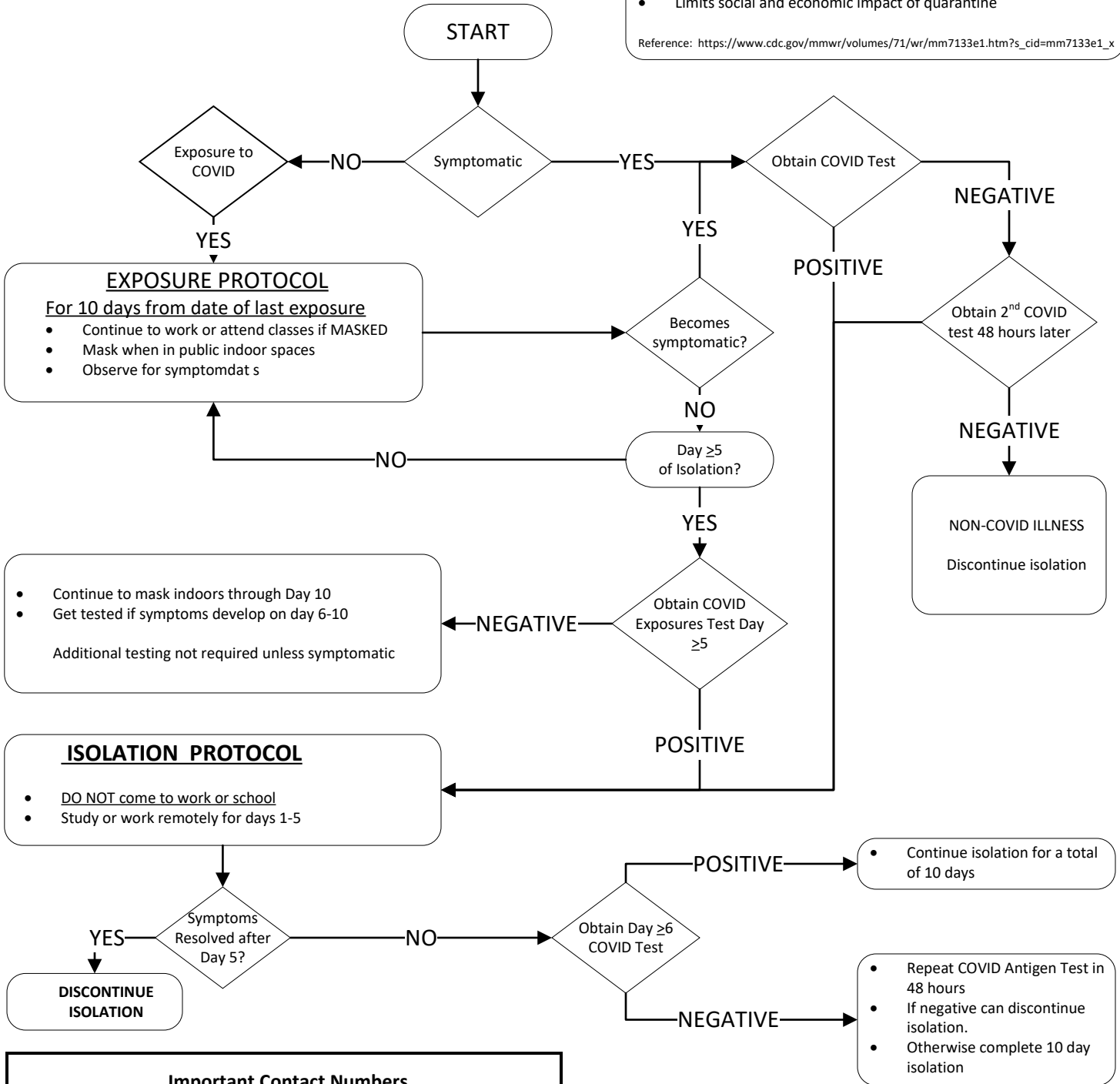
**EXPOSURE DEFINITION**

Exposure to COVID positive individual for >15 min in a 24 hour period within 6 feet.

**QUARANTINE EFFECTIVELY ELIMINATED**  
Effective 8/11/2022

- No longer recommended to due general population immunity regardless of immunization status
- Limits social and economic impact of quarantine

Reference: [https://www.cdc.gov/mmwr/volumes/71/wr/mm7133e1.htm?s\\_cid=mm7133e1\\_x](https://www.cdc.gov/mmwr/volumes/71/wr/mm7133e1.htm?s_cid=mm7133e1_x)



**Important Contact Numbers**

Campus Health Services	852-6479
Contact Tracing Team	852-2955
Campus Housing Office	852-6636
COVID Hotline	852-7549