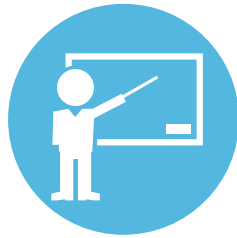


University of Louisville Community Partnerships, 2014-15

Through the partnerships created during the 2014-15 academic year, faculty, staff and students have become engaged in the local, state-wide, national and international community through engaged teaching, research and service. Students have given more than 447,000 hours of service through the 1,214 reported community partnerships. According to the Independent Sector¹, the value of UofL volunteer time in 2014-15 was an estimated \$9,086,206.



2,323
STAFF*



1,870
FACULTY*



17,051
STUDENTS* with
447,817 hours of
service

Community Engagement

UofL collaborates with the larger communities for the mutually beneficial exchange of knowledge and resources. This collaboration guides the work of faculty, staff and students in the areas of teaching, research, and service.



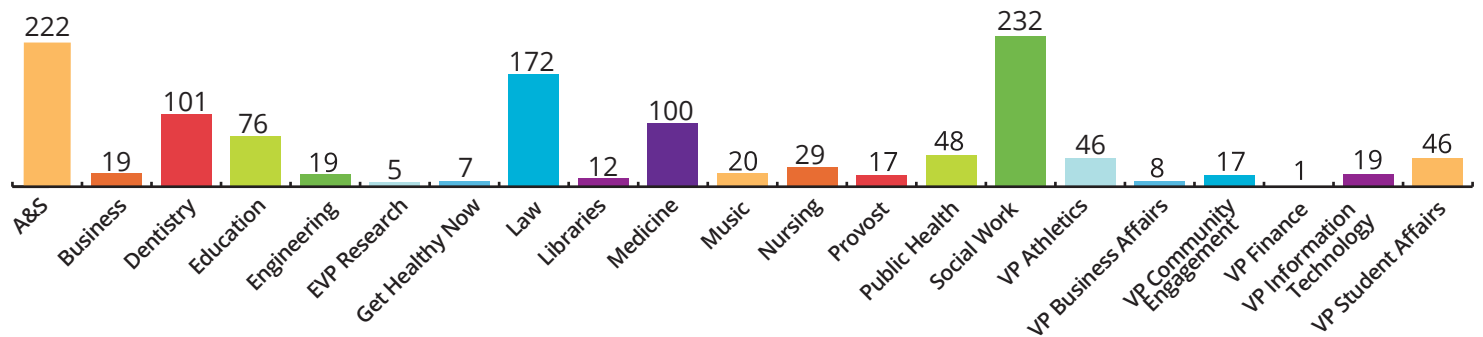
Signature Partnership

The Signature Partnership is a University effort to enhance the quality of life and economic opportunity for residents of West Louisville.

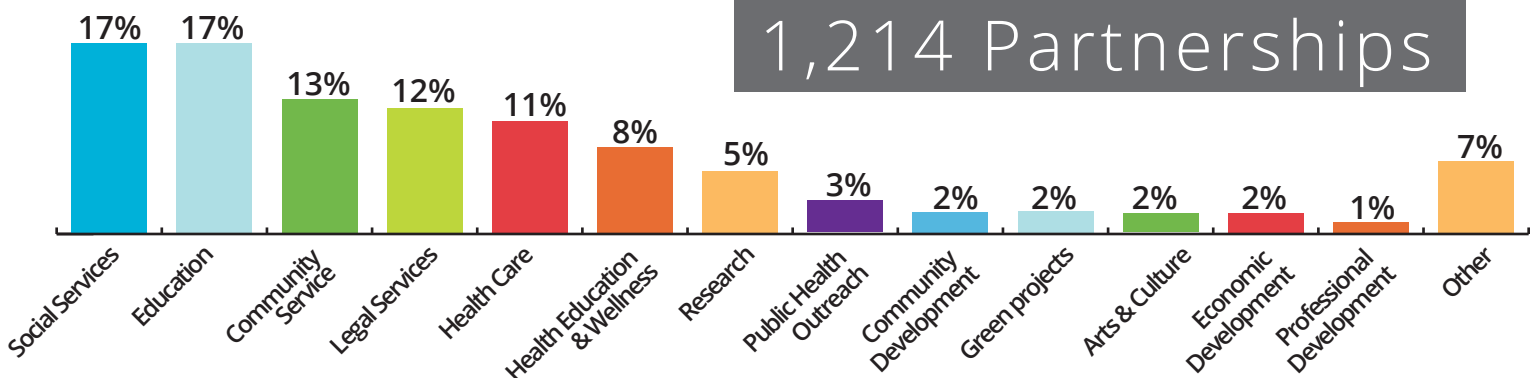


The goal is to work with various community partners to improve the education, health, residents, and social status of individuals and families who live in our urban core.

Number of Partnerships by Unit



Partnerships by Category (%)



1,214 Partnerships

NOTES: The Independent Sector. (n.d.). National Value of Volunteer Time. Retrieved May 2015, from: http://www.independentsector.org/volunteer_time#sthash.0PeK6X8M.dpbs

* These numbers represent instances of service and may reflect a duplicated head count for faculty, staff and students; but does not represent a duplication of service.

— Icons made by Freepik from flaticon.com licensed under Creative Commons