

## Save the Dates

### [Cafecito con HLII](#)

March 5, 10:30 a.m. - 12 p.m.  
Cultural and Equity Center

### [Norton Guide to Equity-Minded Teaching](#)

March 5 and 19, 11 a.m.-12 p.m.  
MS Teams

### [Center for Asian Democracy Annual Lecture feat. Patricia Evangelista](#)

March 5, 4-6 p.m.  
Speed Art Museum

### [International Women's Day](#)

March 5, 5-8 p.m.  
Red Barn

### [2024 Minx Auerbach Lecture: "Legislating Gender"](#)

March 7, 5:30-7 p.m.  
Rauch Planetarium

### [LGBTQ+ Healthcare Professional Panel](#)

March 18, 6-7 p.m.  
SAC, W116

### ["Learning About Belonging Through Black Joy"](#)

March 19, 6-7:30 p.m.  
Shumaker Research Building

### [Empowering Queer Sexual Health](#)

March 21, 12-1 p.m.  
MS Teams

### **CODRE Listening Session**

Date and topic TBD  
12-1:30 p.m.  
MS Teams

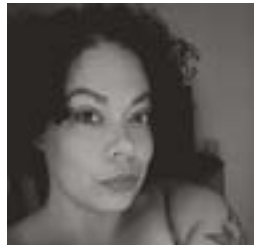
Find details about these and  
other events on the [UofL  
Events Calendar](#).



## 18th-annual Ky. Women's Book Festival is March 2

The 18th annual Kentucky Women's Book Festival will feature authors from a wide variety of genres March 2, 2024, in University of Louisville's Belknap Campus' Ekstrom Library. The festival begins at 9 a.m. with coffee and conversation, and the opening session begins at 9:30 a.m. in Chao Auditorium. Festival sessions and presentations are free but participants are asked to register to guarantee their space.

### Opening Speaker: Joy Priest



The festival's opening speaker is Joy Priest (she/her) the author of *Horsepower* (Pitt Poetry Series, 2020), winner of the Donald Hall Prize for Poetry and the editor of *Once a City Said: A Louisville Poets Anthology* (Sarabande, 2023). She is the recipient of a National Endowment for the Arts fellowship, a Fine Arts Work Center fellowship and the Stanley Kunitz Memorial Prize

from the American Poetry Review. Her poems have appeared or are forthcoming in Boston Review, the Los Angeles Review of Books and The Nation, among others. She is an assistant professor of African American/African Diasporic Poetry at the University of Pittsburgh and the curator of community programs and practice at Pitt's Center for African American Poetry & Poetics.

### Other Speakers:

- [Minda Honey](#)
- [Deedee Cummings](#)
- [Brittany J. Thurman](#)
- [Rheonna Thornton](#)
- [Pamela Haines](#)
- [Jackie Floyd](#)
- [Tytianna Ringstaff](#)

The Kentucky Women's Book Festival 2024 is sponsored by the Women's Center, UofL Libraries and Office of Institutional Equity.

See the [Women's Center website](#) for more information and to register.



## KUDOS to Marian Vasser!



CODRE Vice Chair Marian Vasser, assistant vice president for inclusive excellence and belonging, Office of Institutional Equity, was selected as a recipient of the 2024 Kentucky PTA Honorary Life Recognition Award for Distinguished Service to Children and Youth. Vasser's work across the district, and especially at Manual High School, earned her this outstanding achievement.

## Support the Cardinal Cupboard

The [Commonwealth Credit Union Cardinal Cupboard](#) increases accessibility to food and hygiene products to members of the Cardinal community in an effort to reduce their financial burden.

Currently there is an urgent need for new donations including shelf-stable items and hygiene products. The supplies are so low that the Cupboard has not been able to provide for the Cardinals in need.

UofL faculty, staff and students are encouraged to make

a product or [monetary donation](#) to help replenish stock.

The Cardinal Cupboard is located in the Student Activities Center, room W312, and is open Monday through Friday, 9 a.m. to 6 p.m.

Cardinal Cupboard is operated by a large number of volunteers to help staff the pantry during the fall and spring semesters. If you are interested in volunteering in the pantry, email [involved@louisville.edu](mailto:involved@louisville.edu).

Learn more on the [Cardinal Cupboard Food Pantry Introduction Video](#).

## Transformation Tea volunteers

The Transformation Tea for Women of Color and their Allies began in 1997.

The Tea affords Women of Color an opportunity on an annual basis to empower one another by sharing concerns, problems and positive suggestions.

This committee will need to develop a theme, confirm speaker(s), date (April 2024), location, plan food, entertainment and solicit door prizes.

Those interested in volunteering should email Fannie Cox at [fmcox@louisville.edu](mailto:fmcox@louisville.edu).



*The Commission on Diversity and Racial Equity (CODRE) was established in 1998 by University of Louisville President John Shumaker, to promote a campus culture of inclusion and engagement. CODRE strives to foster and sustain an environment of inclusiveness that empowers us all to achieve our highest potential without fear of prejudice or bias.*

### Executive Committee

[Dwayne Compton](#)  
Chair

[Marian Vasser](#)  
Vice Chair

[Wanda Long](#)  
Treasurer

[Chris Wooton](#)  
Communications Director

Learn more about CODRE at [louisville.edu/codre](https://louisville.edu/codre).