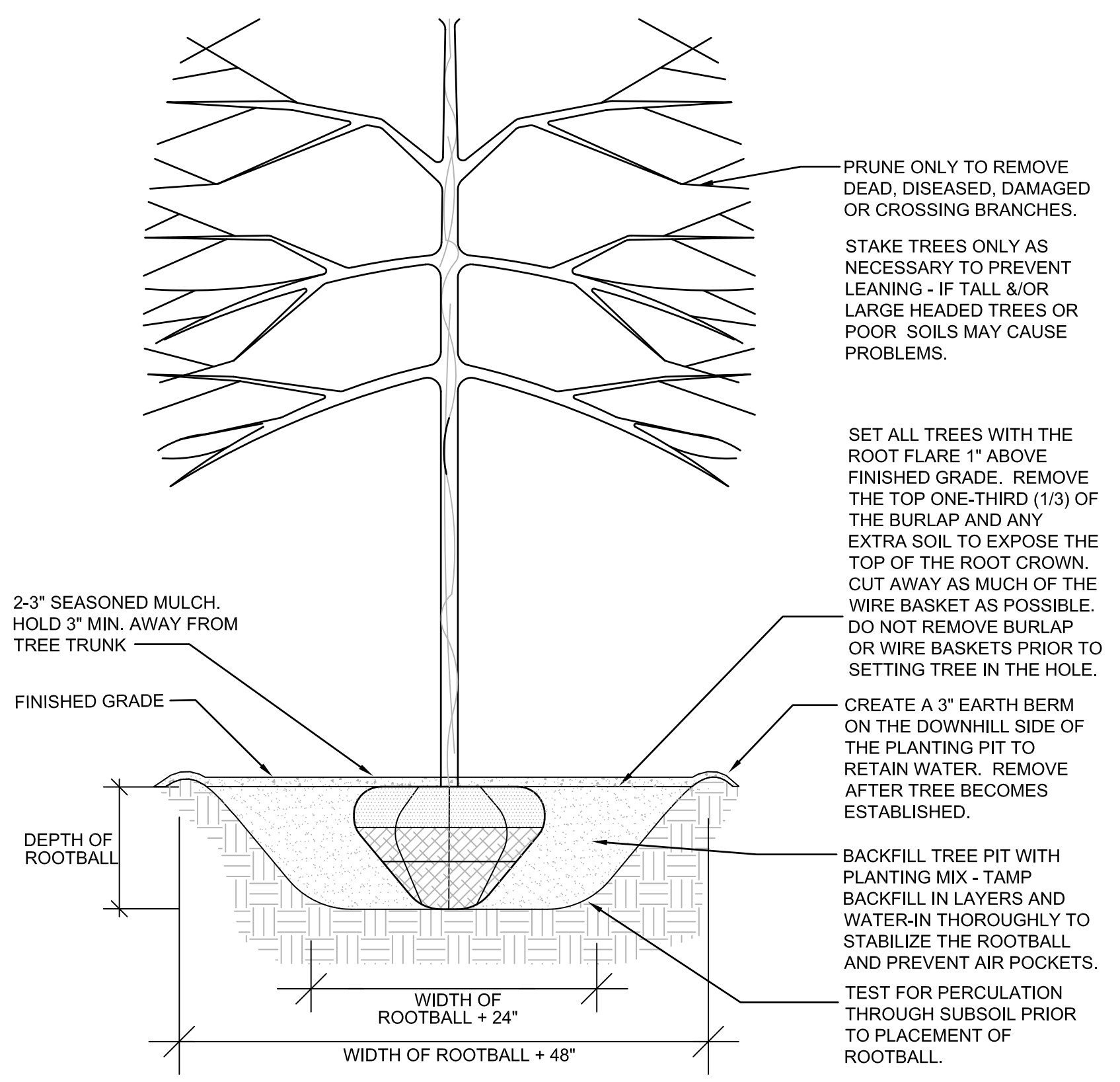
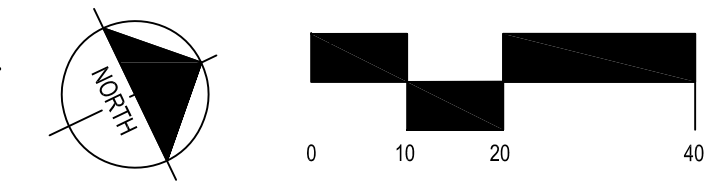
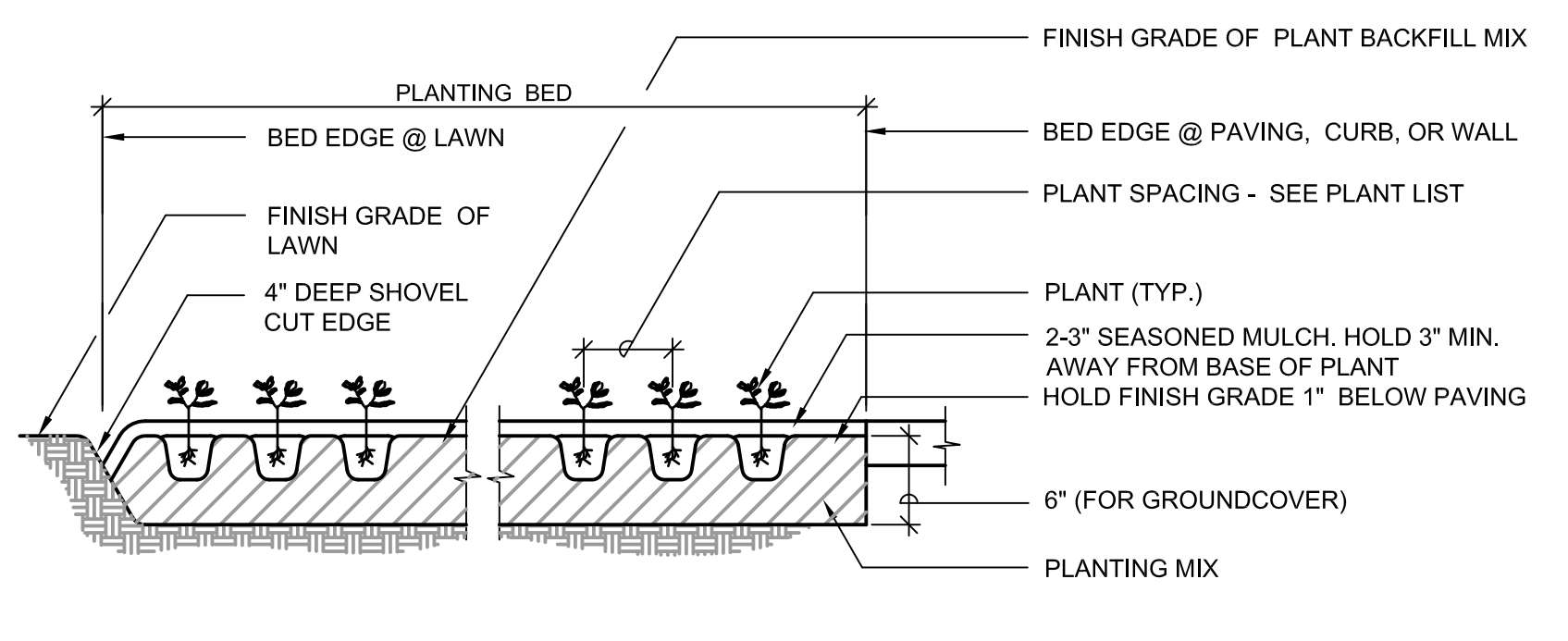


**1 PLANTING PLAN**  
L-107 SCALE: 1" = 20'-0"



**2 TREE PLANTING**  
L-107 SCALE: N.T.S.

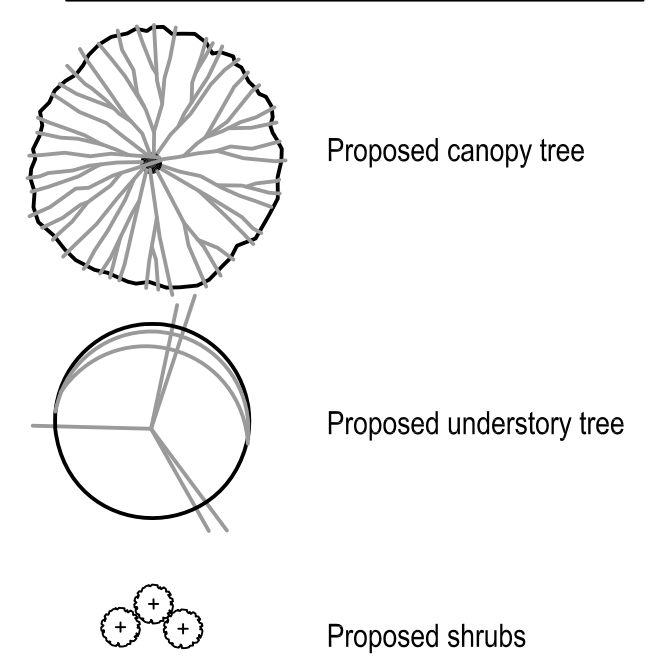


**3 GROUNDCOVER PLANTING**  
L-107 SCALE: N.T.S.

**PLANTING NOTES:**

- ALL AREAS, WITHIN THE PROJECT BOUNDARY, NOT OTHERWISE DESIGNATED ON PLANS SHALL BE LAWN.
- PLACE A 2" LAYER OF SHREDDED BARK MULCH OVER ALL BEDS AND OVER ALL TREE PITS.
- CONTRACTOR SHALL VERIFY PLANT COUNTS BY CONFIRMING PLANTING PLAN AND PLANT LIST FOR ACCURACY DURING THE BIDDING PROCESS. REPORT ANY DISCREPANCIES IMMEDIATELY FOR CLARIFICATION BY THE LANDSCAPE ARCHITECT.
- DO NOT DISPERSE SOIL EXCAVATED FROM PLANTING PITS OVER PLANT BED SURFACES.
- NO EXCAVATION OR PLANTING PIT SHALL BE LEFT OPEN OR UNATTENDED OVERNIGHT.

**LEGEND:**



**PLANT LIST:**

KEY	QTY.	BOTANICAL NAME	COMMON NAME	SIZE	SPACING	REMARKS
<b>CANOPY AND UNDERSTORY TREE SPECIES:</b>						
NS	3	<i>Nyssa sylvatica</i>	Black gum	2" cal. B&B	as shown	
PO	3	<i>Platanus occidentalis</i>	Bloodgood London Planetree	2" cal. B&B	as shown	
QA	1	<i>Quercus alba</i>	White oak	2" cal. B&B	as shown	
QB	6	<i>Quercus bicolor</i>	Swamp white oak	2" cal. B&B	as shown	
TD	4	<i>Taxodium distichum</i>	Bald cypress	2" cal. B&B	as shown	
<b>SHRUB SPECIES:</b>						
PO	5	<i>Physocarpus opulifolius</i> 'Diablo'	Diablo ninebark	#3 Cont.	as shown	
VC	18	<i>Viburnum carlesii</i> 'Cayuga'	Cayuga Koreanspice viburnum	24" B&B	as shown	

**ABBREVIATIONS:**

cal. = CALIPER, B&B = BALLED AND BURLAPPED, O.C. = ON CENTER, HT. = HEIGHT, CONT. = CONTAINER GROWN  
TRIA SPR. = TRIANGULAR SPACING