

LEGEND

- Home ownership (for sale)
Single-Family Houses & Townhouses
- Rental Single-Family Houses, Townhouses,
4-unit & 6-unit Apartment Buildings
- Mixed-use Commercial/Residential
- Commercial
- Community Facilities
- Multi-Family by Others

Park DuValle Hope VI Conceptual Master Plan

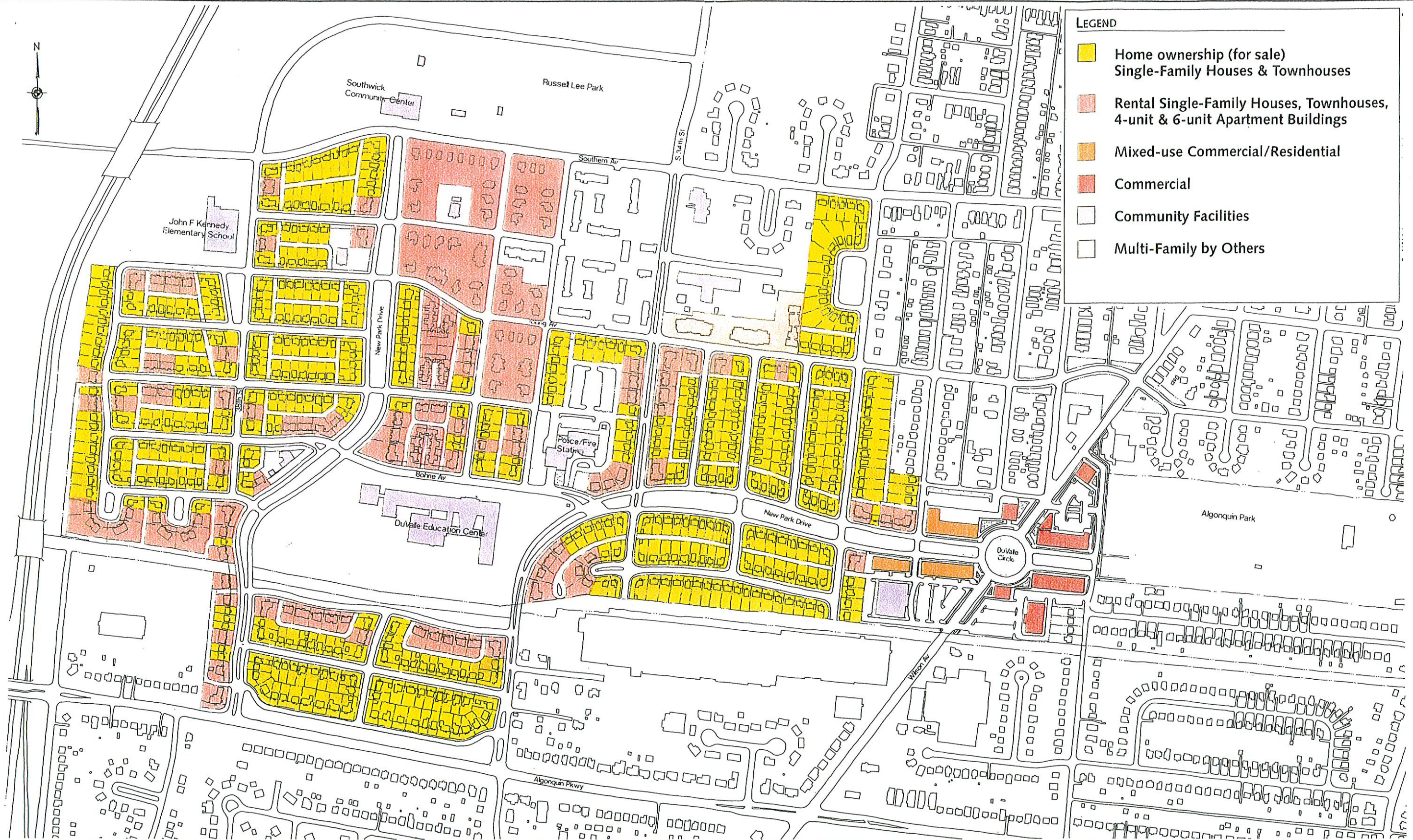
Building Uses Plan

Prepared for the Housing Authority of Louisville and the City of Louisville



Urban Design Associates
LaQuatra Bonci Associates

March 1998



- LEGEND**
- Home ownership (for sale)
Single-Family Houses & Townhouses
 - Rental Single-Family Houses, Townhouses,
4-unit & 6-unit Apartment Buildings
 - Mixed-use Commercial/Residential
 - Commercial
 - Community Facilities
 - Multi-Family by Others

Park DuValle Hope VI Conceptual Master Plan

Building Uses Plan (Anticipated Future Disposition)

Prepared for the Housing Authority of Louisville and the City of Louisville

0 200 400



Urban Design Associates
LaQuatra Bonci Associates

March 1998



Park DuValle Hope VI Conceptual Master Plan

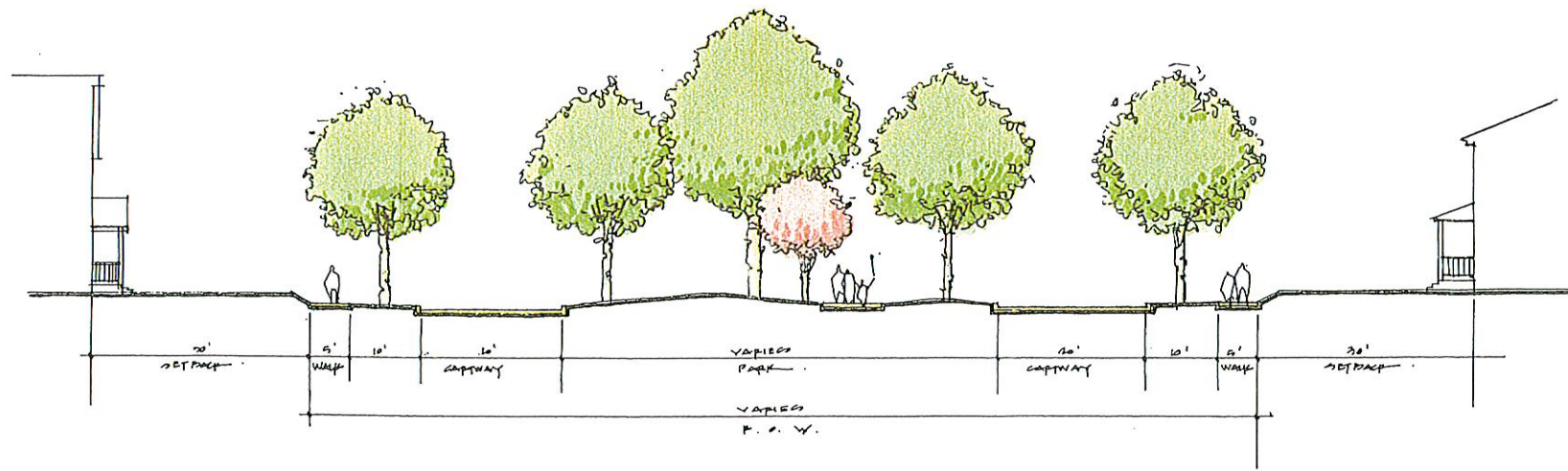
Parks & Open Space Plan

Prepared for the Housing Authority of Louisville and the City of Louisville

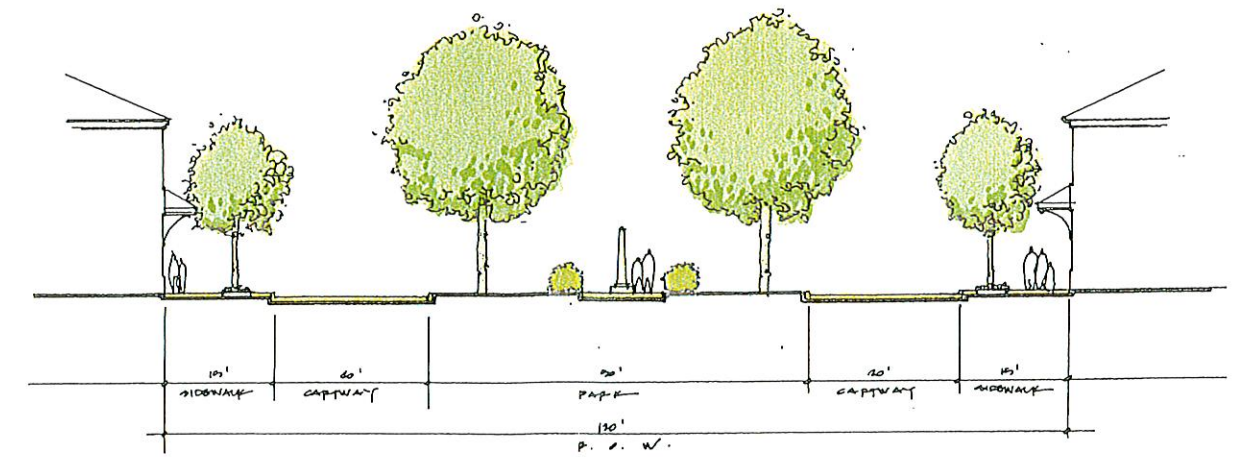


Urban Design Associates
LaQuatra Bonci Associates

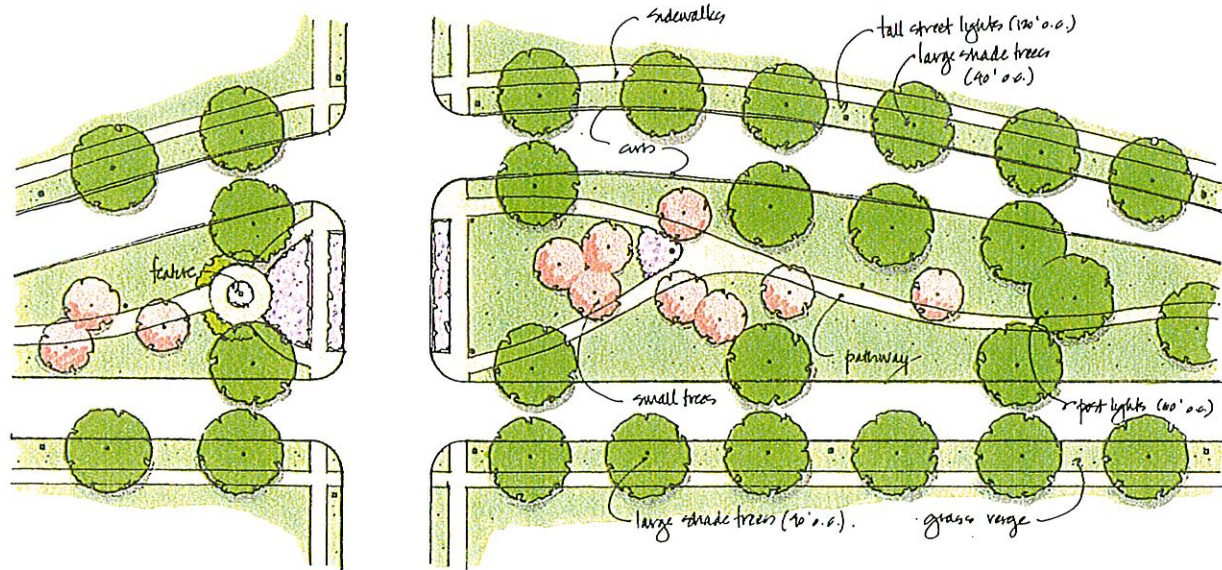
March 1998



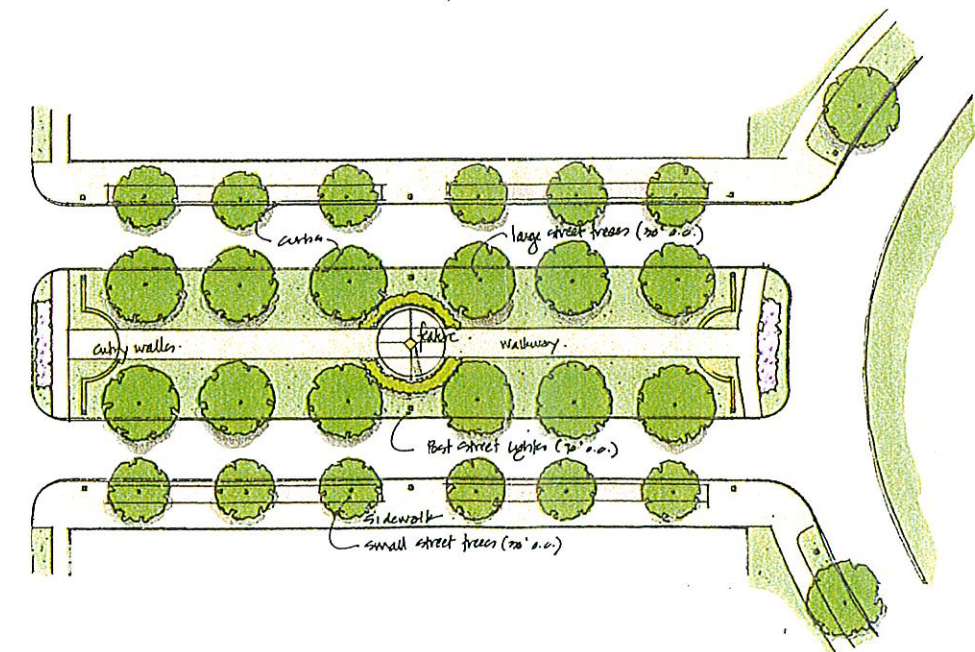
Section of Typical Park Drive



Section of Park at Commercial Street



Plan of Typical Park along Park Drive



Plan of Park at Commercial Street

Park DuValle Hope VI Conceptual Master Plan

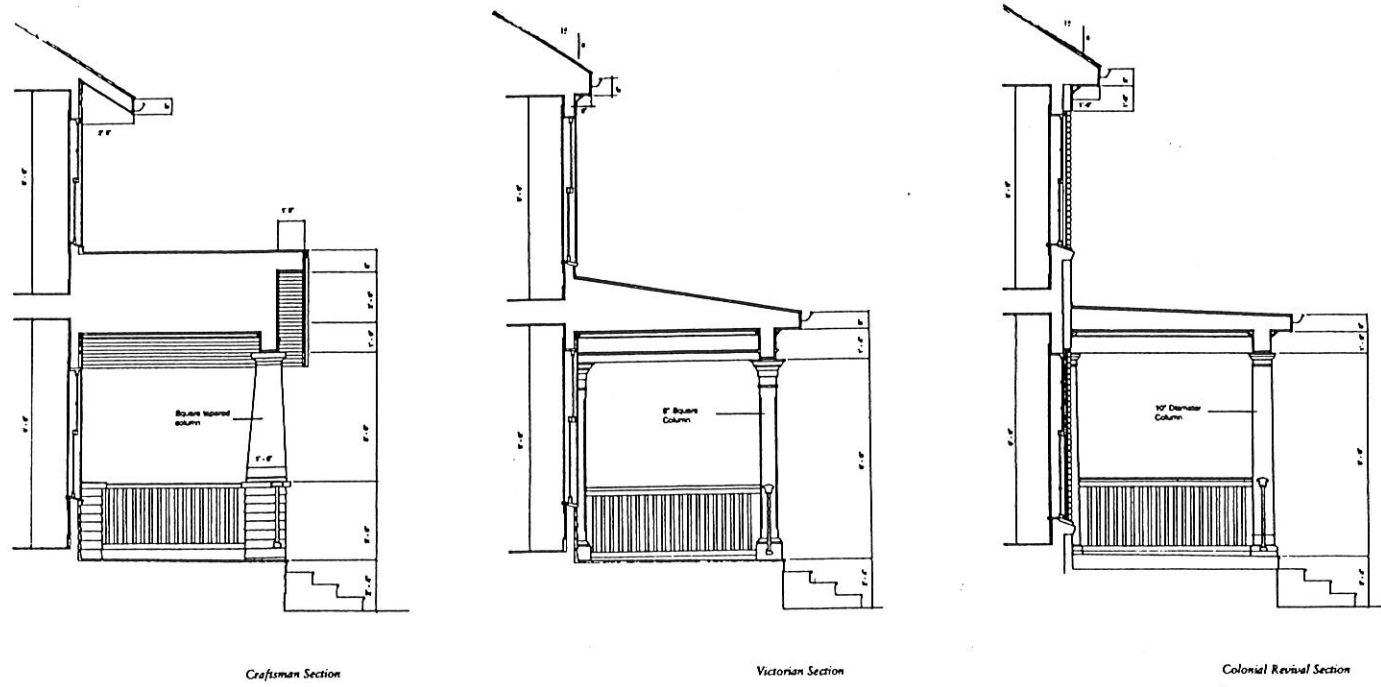
Parks & Open Space · Sections and Details

Prepared for the Housing Authority of Louisville and the City of Louisville

Urban Design Associates
LaQuatra Bonci Associates

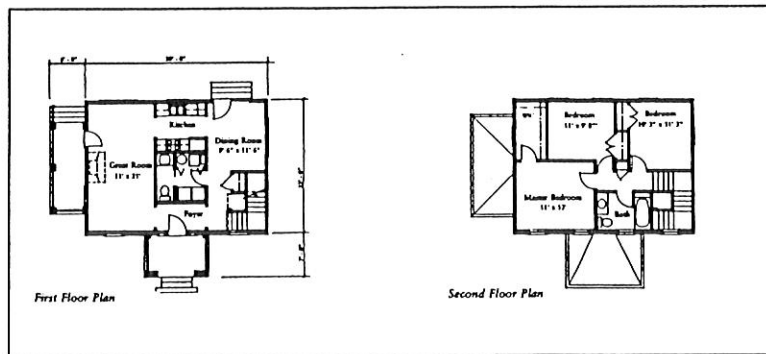
March 1998

Park DuValle Builder Houses



The Essex

The Essex continues the Louisville tradition of distinctive Colonial Revival, Victorian and Craftsman houses. This 1300 square foot, three bedroom house is designed to accommodate today's lifestyles. The rooms are connected and open to allow for views out the windows in the front and back and to provide flexibility in furniture layout and room use. Generous storage areas including a kitchen pantry and closets near the living spaces



are amenities built into the design.

Porches on all three houses extend the livability of the house and provide the essential quality of traditional neighborhood living. These porches can be varied to change the appearance of the house. The Essex is designed to accept additions in the form of rear wings that can have family rooms, master bedroom suites and connections to garages.