

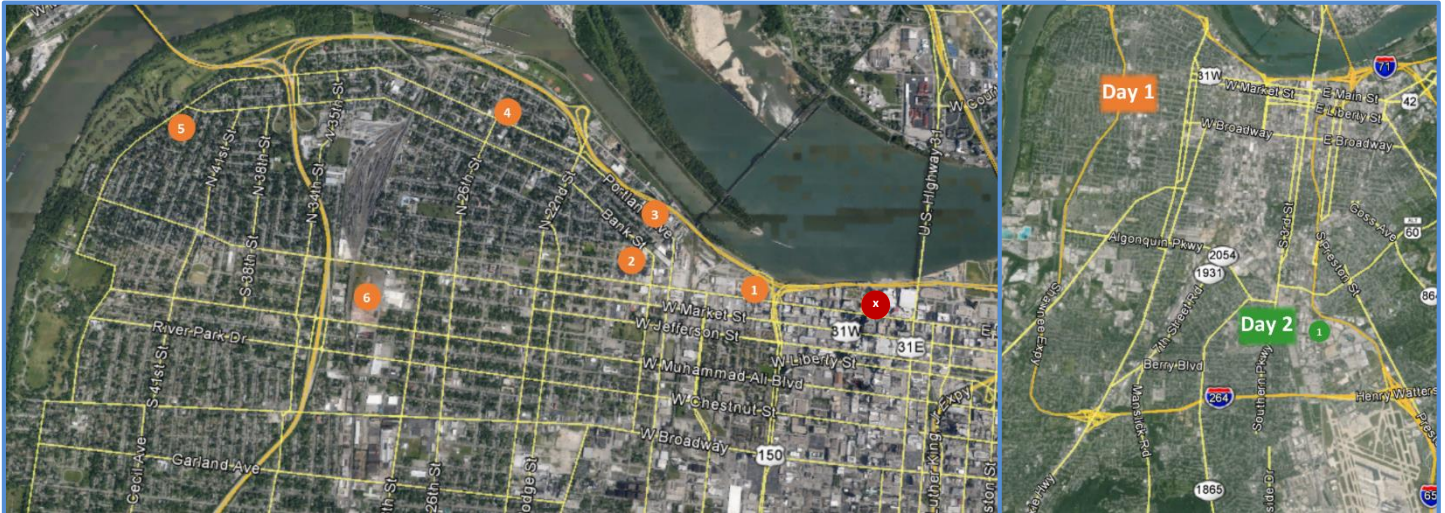
## BUS TOUR ITINERARY

### Growing the Local / Regional Food System: Strategies for Sustainable and Equitable Economic Development

February 18-19, 2015 | Louisville, KY



Sustainable Communities  
Learning Network



Map Source: Google Maps

#### Wednesday, February 18

3:15 p.m. – 5:30 p.m.

- 3:15 p.m. ✘ Passenger Pick-up  
Location: Galt House Rivue Tower lobby doors, 140 N. 4<sup>th</sup> Street, 40202
- 3:20 p.m. – 3:50 p.m. 1 Kentucky Peerless Distilling Company, 120 N. 10<sup>th</sup> Street, 40202 (bus stop on Main St at 10<sup>th</sup>)  
<http://kentuckypeerless.com/>  
*En route to 2509 Portland Avenue, we will drive past two new food businesses/operations:*
- 2 (remain on bus): Please & Thank You Hot Coffee and Bakehouse, 1626 Duncan Street, Louisville, 40202  
<http://www.pleaseandthankyoulouisville.com/hotcoffee/>
- 3 (remain on bus): Lots of Food, 1651 Portland Avenue, 40203  
<http://www.louisvillelotsoffood.com/>
- 4:00 p.m. – 4:30 p.m. 4 Gelato Gilberto/Hillbilly Tea Commissary, 2509 Portland Avenue, 40212  
[www.gelatogilberto.com](http://www.gelatogilberto.com)  
[www.hillbillyteashop.com](http://www.hillbillyteashop.com)
- 4:45 p.m. – 5:15 p.m. 5 The People's Garden/Urban Growers Collaborative, 516 N 44<sup>th</sup> Street, 40212  
*(Portland Avenue turns into Northwestern Parkway; take a left onto Bank Street (Boone Lane) then right on 44th St)*  
<http://www.louisvillegrows.org/what-we-do/urban-agriculture/the-peoples-garden/>
- 6 (remain on bus): West Louisville Food Port, 3029 West Muhammad Ali Boulevard, 40212
- 5:30 p.m. ✘ Return to Galt House Rivue Tower lobby doors, 140 N. 4<sup>th</sup> Street, 40202

#### Thursday, February 19

12:30 p.m. – 2:30 p.m.

- 12:30 p.m. ✘ Passenger Pick-up  
Location: Galt House Rivue Tower lobby doors, 140 N. 4<sup>th</sup> Street, 40202
- 12:45 p.m. – 3:00 p.m. 1 Jefferson County Public School Nutrition Service Center, 3001 Crittenden Drive, 40209  
[http://www.jefferson.kyschools.us/Departments/NutritionServices/nutrition\\_center.htm](http://www.jefferson.kyschools.us/Departments/NutritionServices/nutrition_center.htm)  
Event Wrap-up Session
- 3:30 p.m. ✘ Return to Galt House Rivue Tower lobby doors, 140 N. 4<sup>th</sup> Street, 40202