

Greater Portland Sustainable Food Production Cluster

Growing the Local /Regional Food System Workshop

February 18-19, 2015

Louisville, Kentucky



Caroline Paras
Community & Economic Planner
Greater Portland Council of Governments

Rebecca Schaffner, AICP
Director of Sustain Southern Maine
Greater Portland Council of Governments

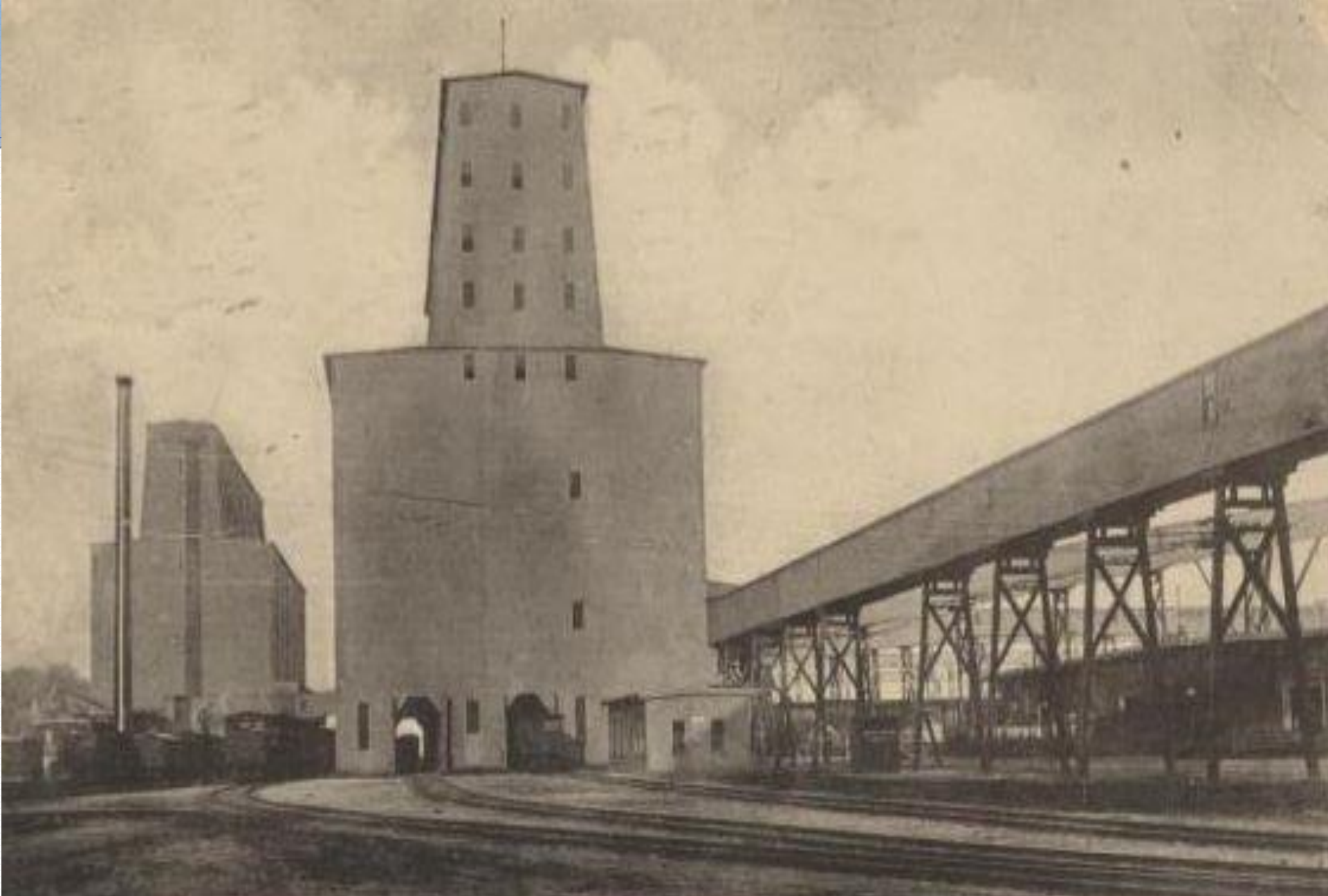
Golden Age of Sailing



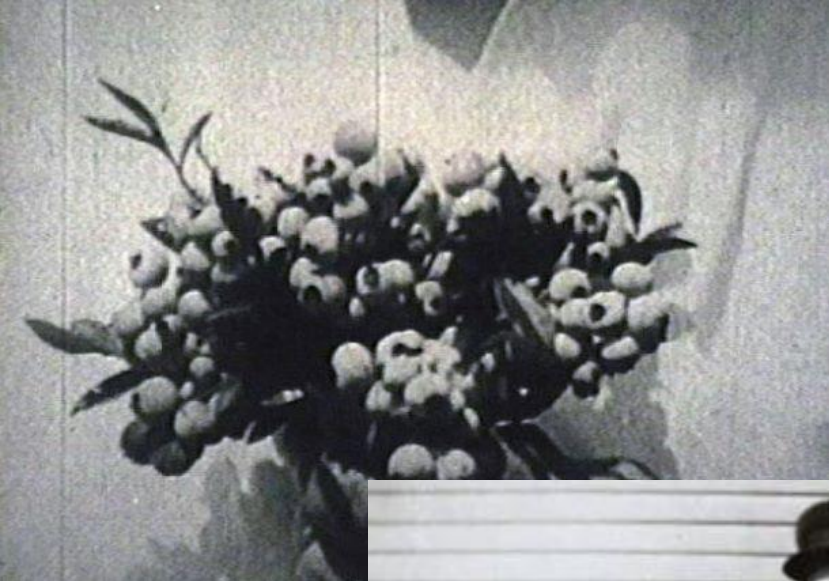




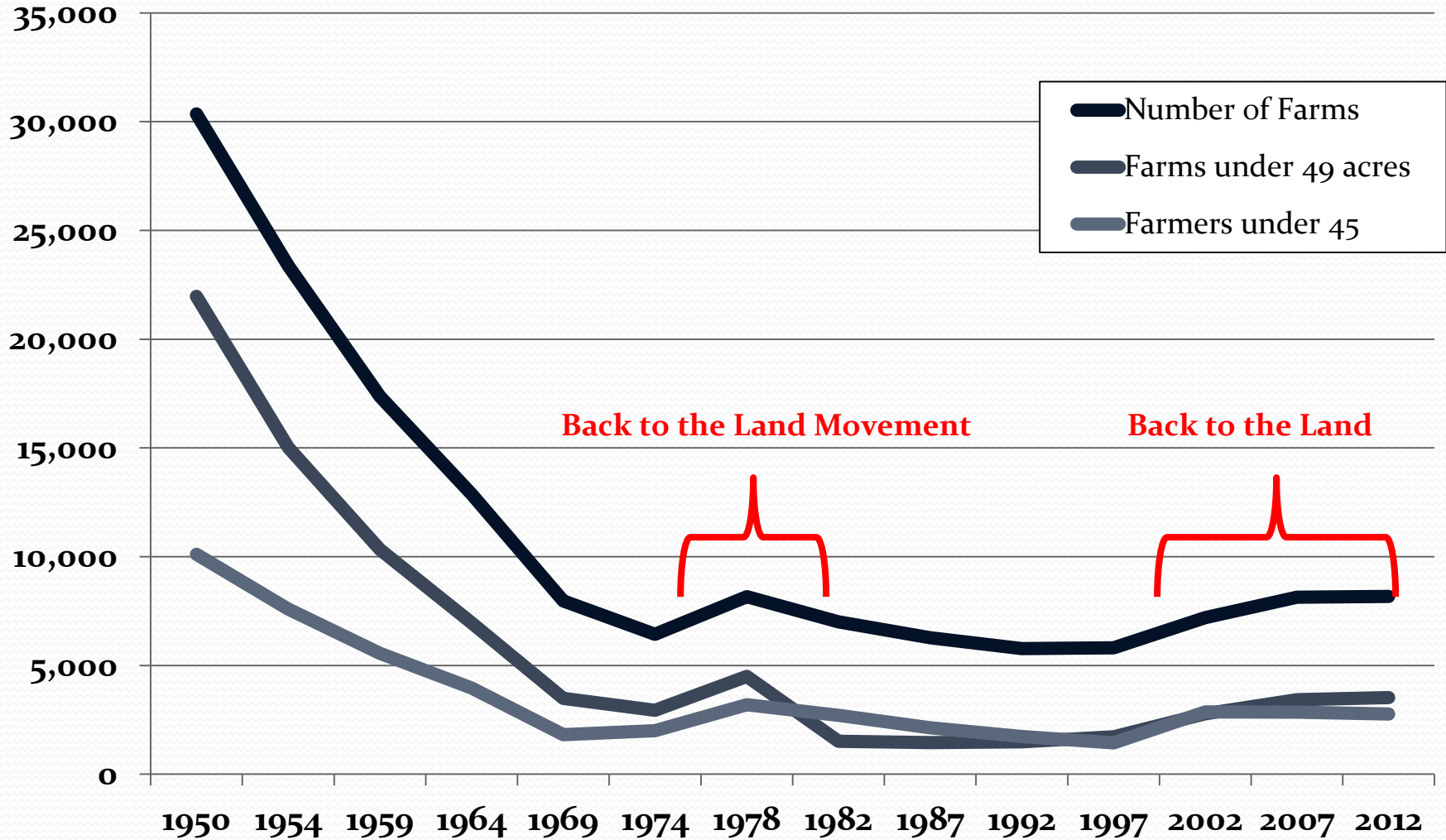




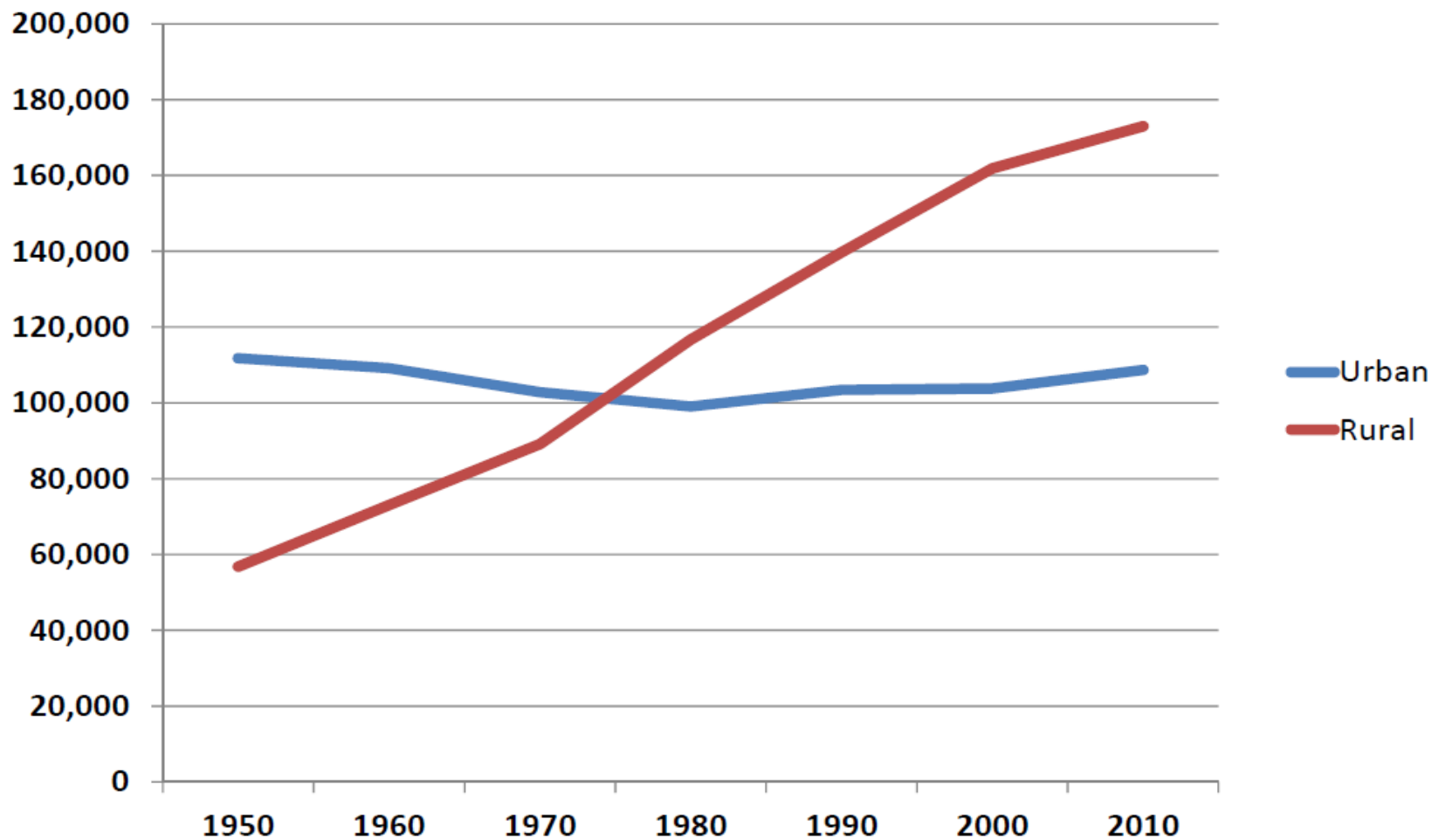
Grand Trunk Grain Elevator, Portland, Me.

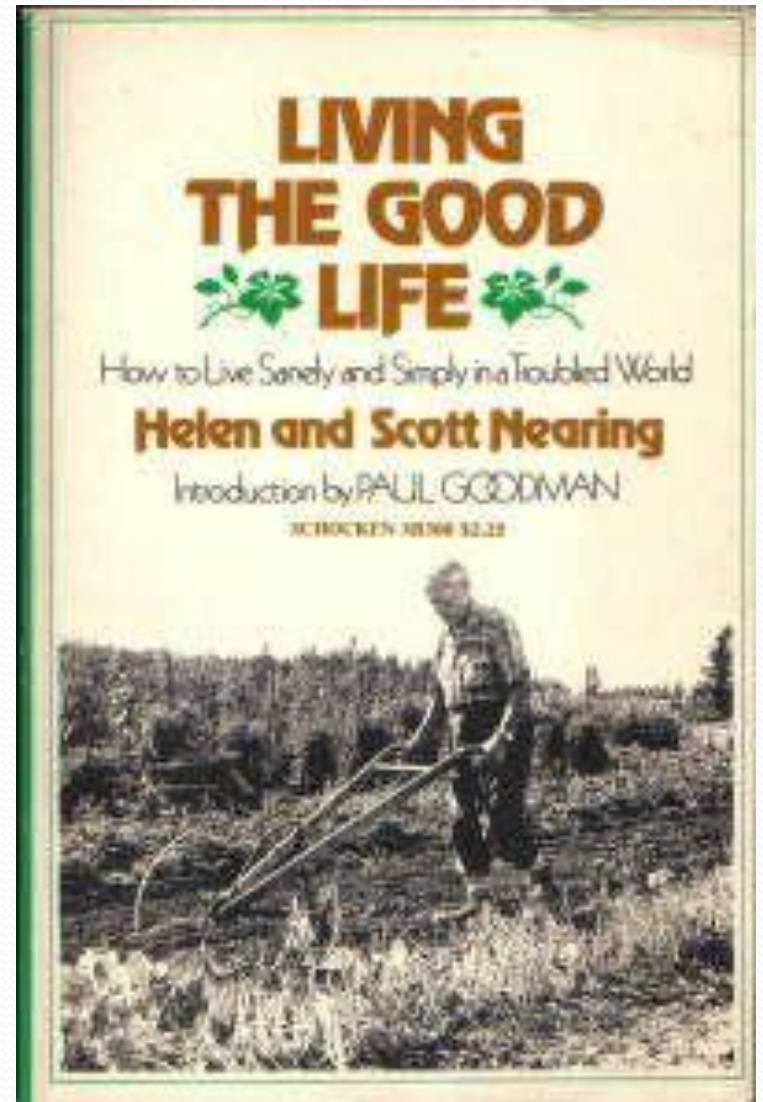
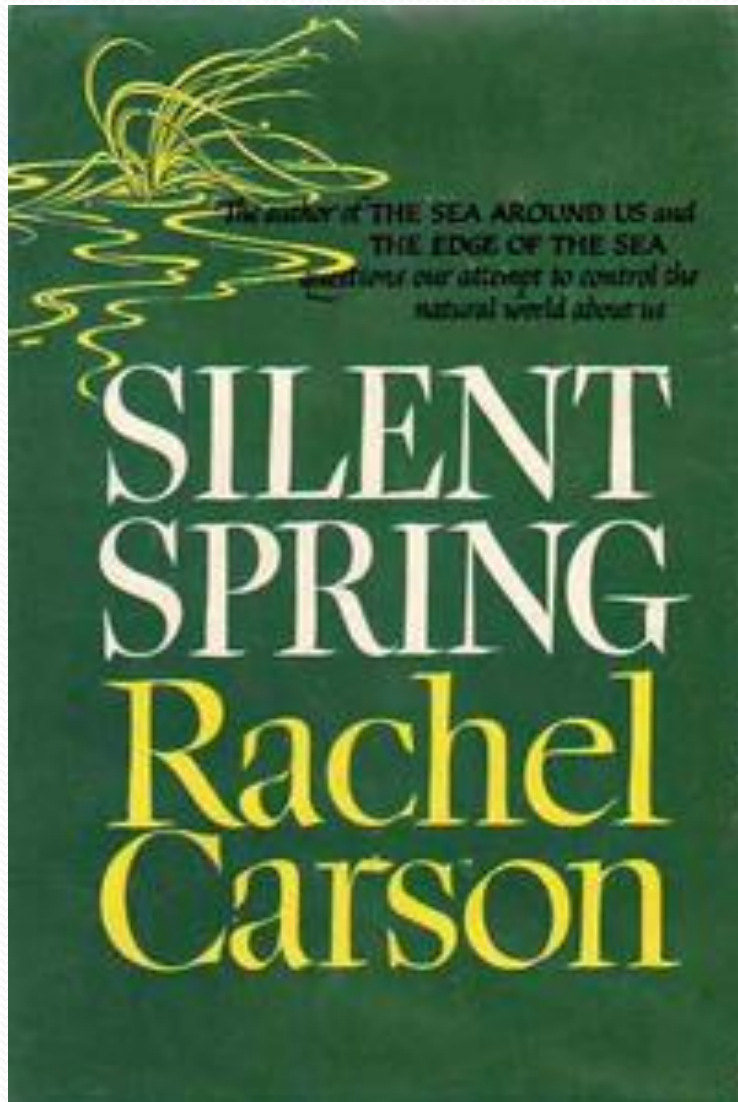


Trends in Maine Agriculture, 1950-2012



Population in Cumberland County, 1950-2010





Back to the Land: 1970-1980

- Get out of the capitalist system
- Live off the land
- Become self-sufficient
- Grow as much of your own food as possible

So, what happened?...



Economic shifts =
Mismatch between skills
& employment



Housing shortage =
Expensive real estate &
Lack of options



High energy costs =
High cost of living



Antiquated & Inadequate Infrastructure =
Inability to compete in
21st Century economy &
Vulnerable to changing climate

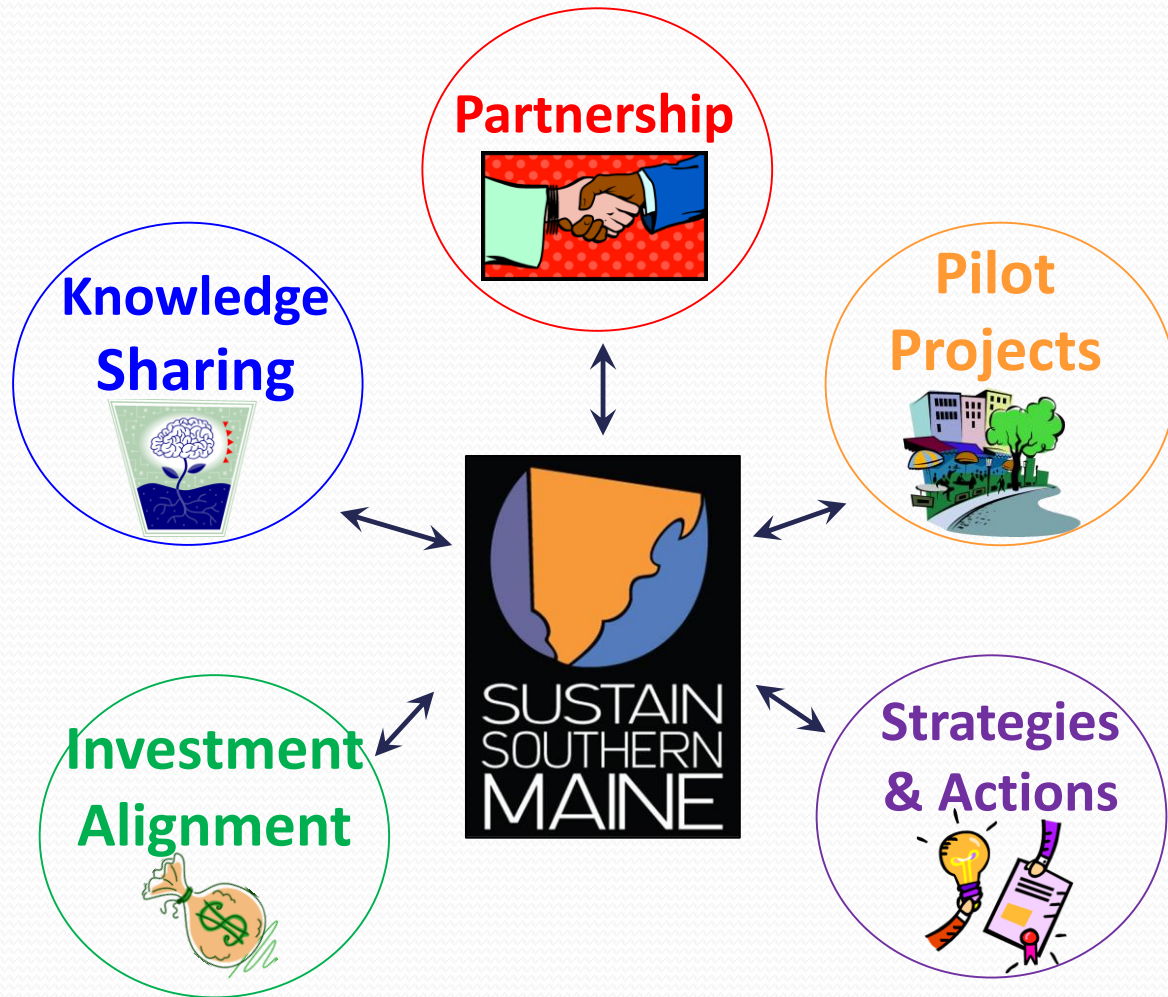


Oldest state in the nation =
Lack of services for seniors &
Diminishing workforce

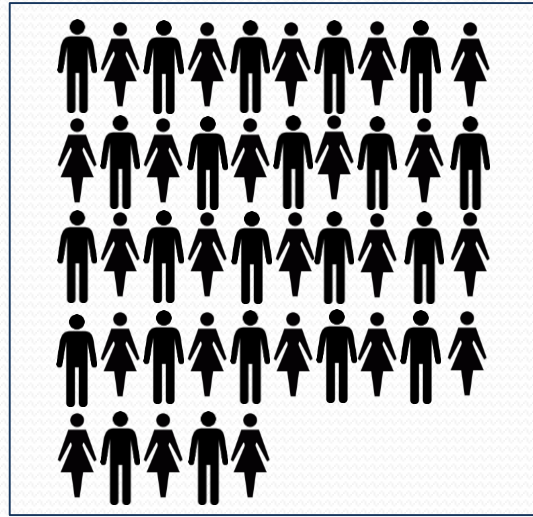


Sprawling development =
Loss of resources &
Loss of regional brand

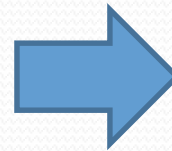
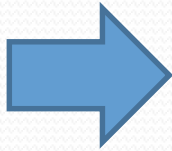
Enter Sustain Southern Maine

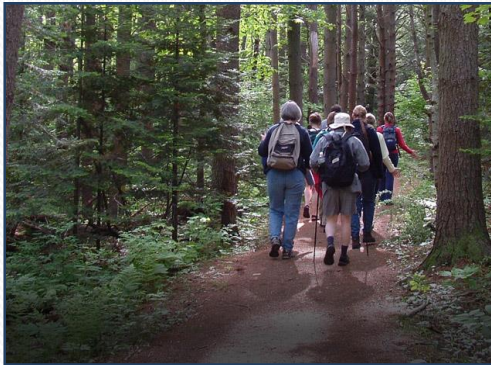
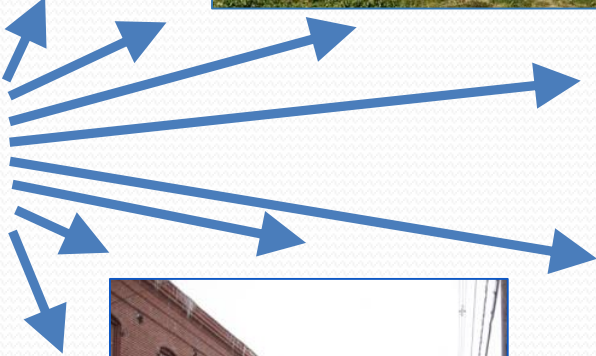
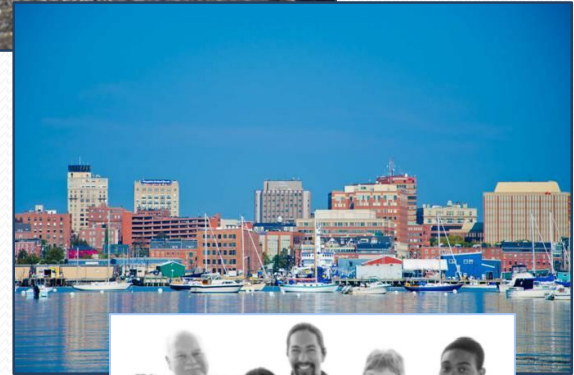
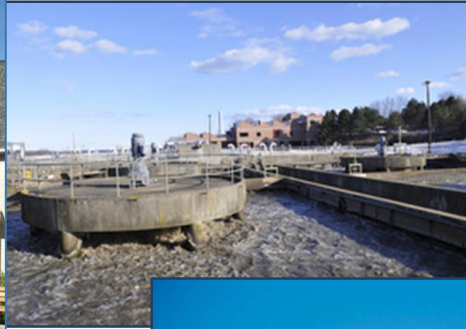


Partnership



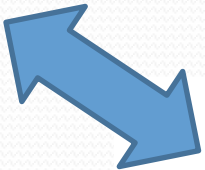
Pilot Projects





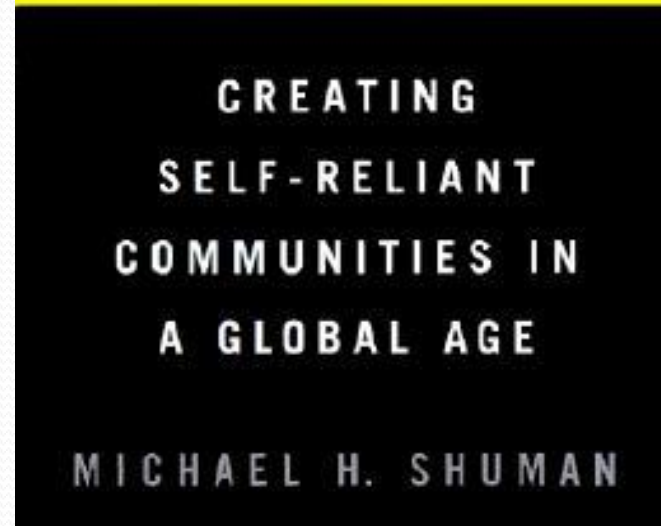
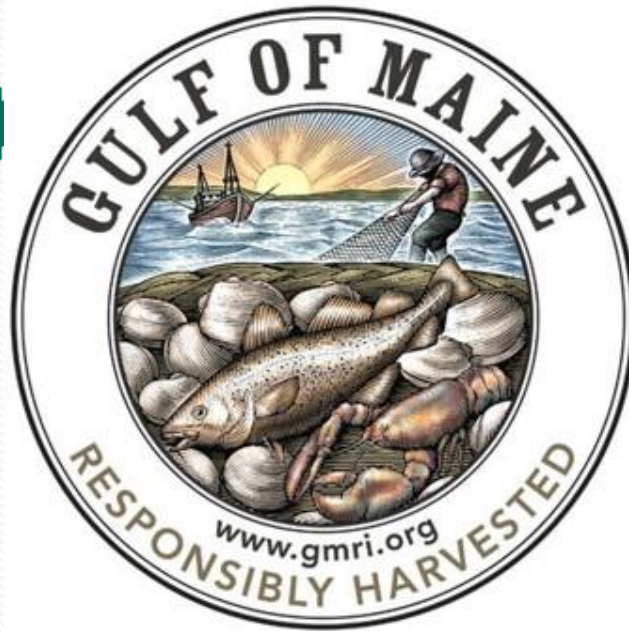


UNIVERSITY OF
SOUTHERN MAINE
Muskie School of Public Service



**Greater Portland
Sustainable Food Production
Cluster**





www.portlandbuylocal.org

Location Quotient

LQ =

Region's manufacturing employment in specific industry sector

Region's total employment

Nation's manufacturing employment in specific industry sector

Nation's total employment

Agriculture & Fisheries – Food Processing

Cumberland County

5.52

LQ for Fisheries and Fish Products

1.83

LQ for Specialty Foods

64

Businesses plus home processors

1,812

Jobs

31%

Maine's food processing employment

\$682 million

Sales revenue

Investing in Manufacturing Communities Partnership (IMCP)

**Portland wins federal
manufacturing designation for
food and agriculture**

White House designates 12 'Manufacturing Communities'

**Portland seeks manufacturing
boost from local foods**

Scale up 50 home enterprises to food manufacturing operations

\$14 million

110 jobs



Find markets for 20% of raw food that is wasted

\$47 million

290 jobs

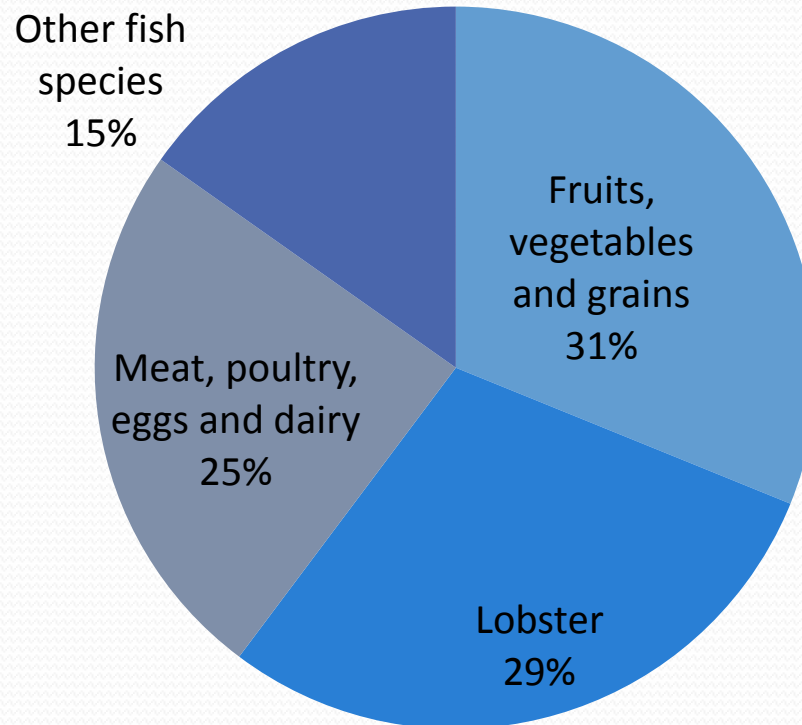


Add value to 10% of raw food that is now shipped out of state for processing

\$80 million

500 jobs

Maine Farm and Fish Products in 2012 by Value \$1.2 billion

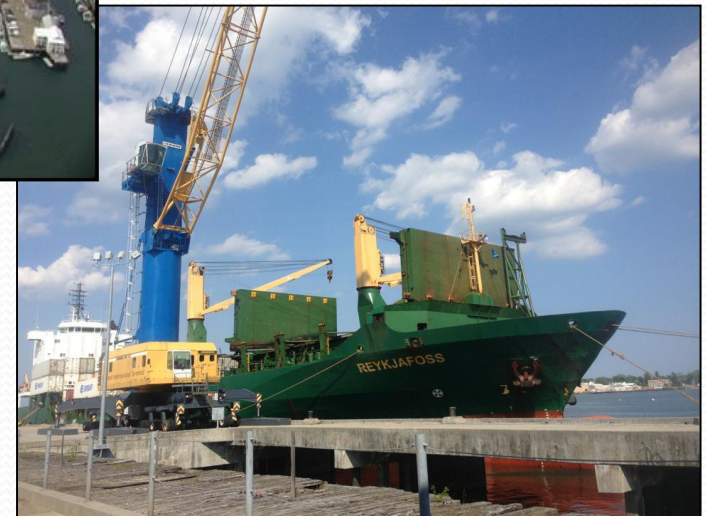




Increase global markets for Maine food by 25%

\$133 million

800 jobs



Replace 10% of imported manufacturing inputs with Maine product

\$26 million

160 jobs



Replace \$100 million in food imported by households, restaurants and institutions with local food

\$100 million

600 jobs



Greater Portland Sustainable Food Production Cluster

Direct impact

\$400 million

2,500 jobs

