

Logan CSO Basin Storage and Interceptor Project

Germantown Shelby Park Meeting
Tuesday, July 8, 2014
AMVETS Post



Logan CSO Storage Basin & Interceptor Overview

- Project Description
- Project Schedule
- Project Information
- Project Benefits & Challenges



Logan CSO Storage Basin & Interceptor Project Description - Demolition

- Four Commercial Buildings
 - 53,600 sf
 - Lead & Asbestos Abatement
- Two Metal Canopies
 - 8,600 sf
- Underground Tanks
 - 20,000 gallon Diesel Fuel Tank
 - 20,000 gallon Gasoline Fuel Tank
 - Oil Water Separators
- One Single Family Structure



Logan CSO Storage Basin & Interceptor Project Description - Interceptor

- Beneath Improved Channel of Beargrass Creek
- Downstream End: Breckenridge St & Logan St
- Upstream End: Calvary Cemetery
- Length: 10,000 ft
- Diameter: 48 in to 96 in



Logan CSO Storage Basin & Interceptor Project Description - Basin

- Basin Size: 202 ft x 408 ft
- Capacity: 17.1 MG
- Maximum Basin Water Elevation: 434.80 ft
- Existing Ground Elevation: 447.00 ft
- Average Basin Floor Elevation: 406.80 ft
- Gravity In Pump Out
- Collects Flow from 13 CSOs
- Overflows Reduced to 8 or less per year

Logan CSO Storage Basin & Interceptor Project Schedule – Demolition

- Planning Complete
- Preliminary Design Complete
- Final Design Complete
- Advertise Demolition Complete
- Demolition Start Complete
- Demolition Finish Complete

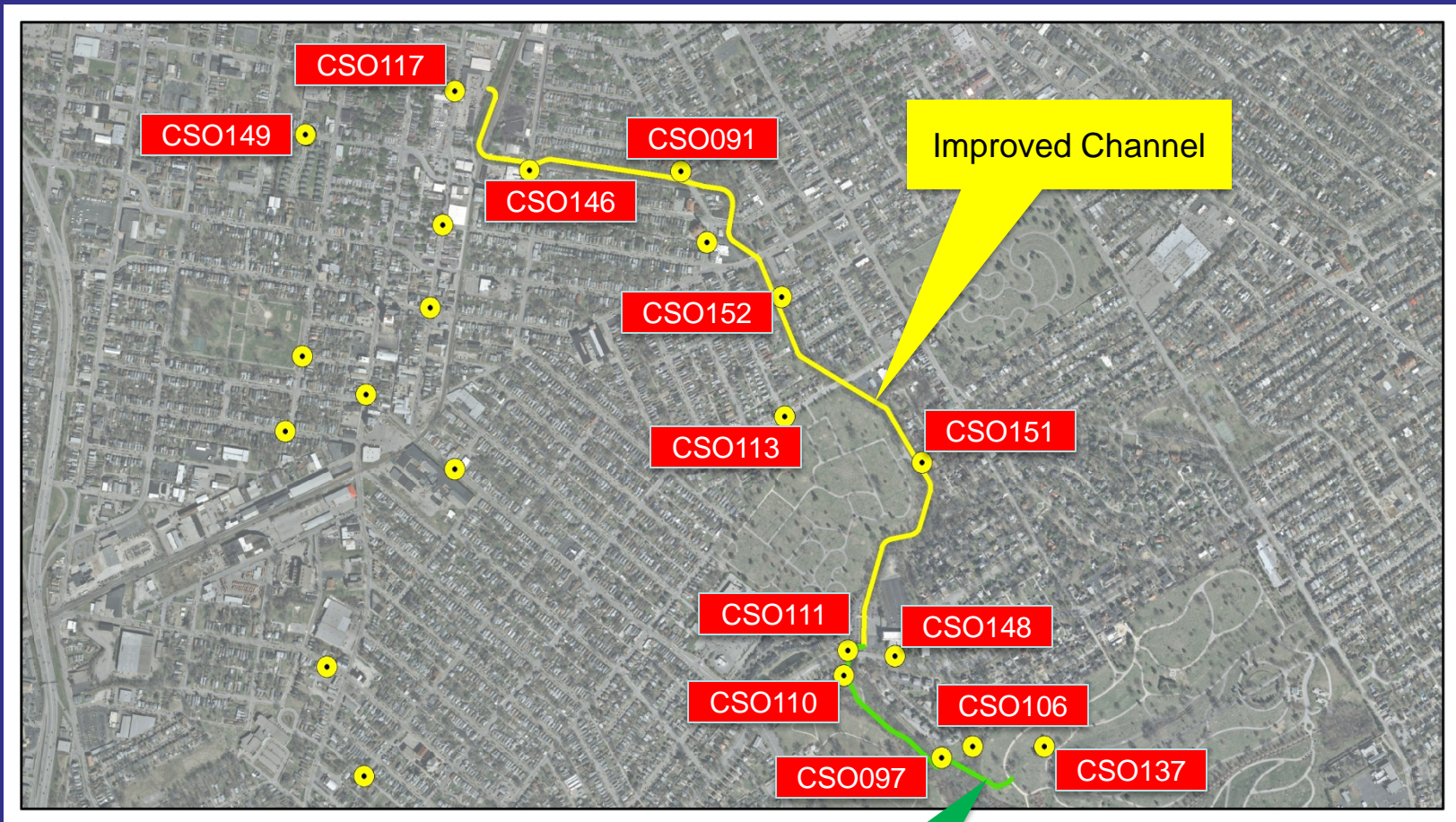
Logan CSO Storage Basin & Interceptor Project Schedule – Interceptor

- Planning Complete
- Preliminary Design Complete
- Final Design Complete
- Advertise Construction March 2014
- Construction Start September 2014
- Consent Decree Deadline Dec. 31, 2017

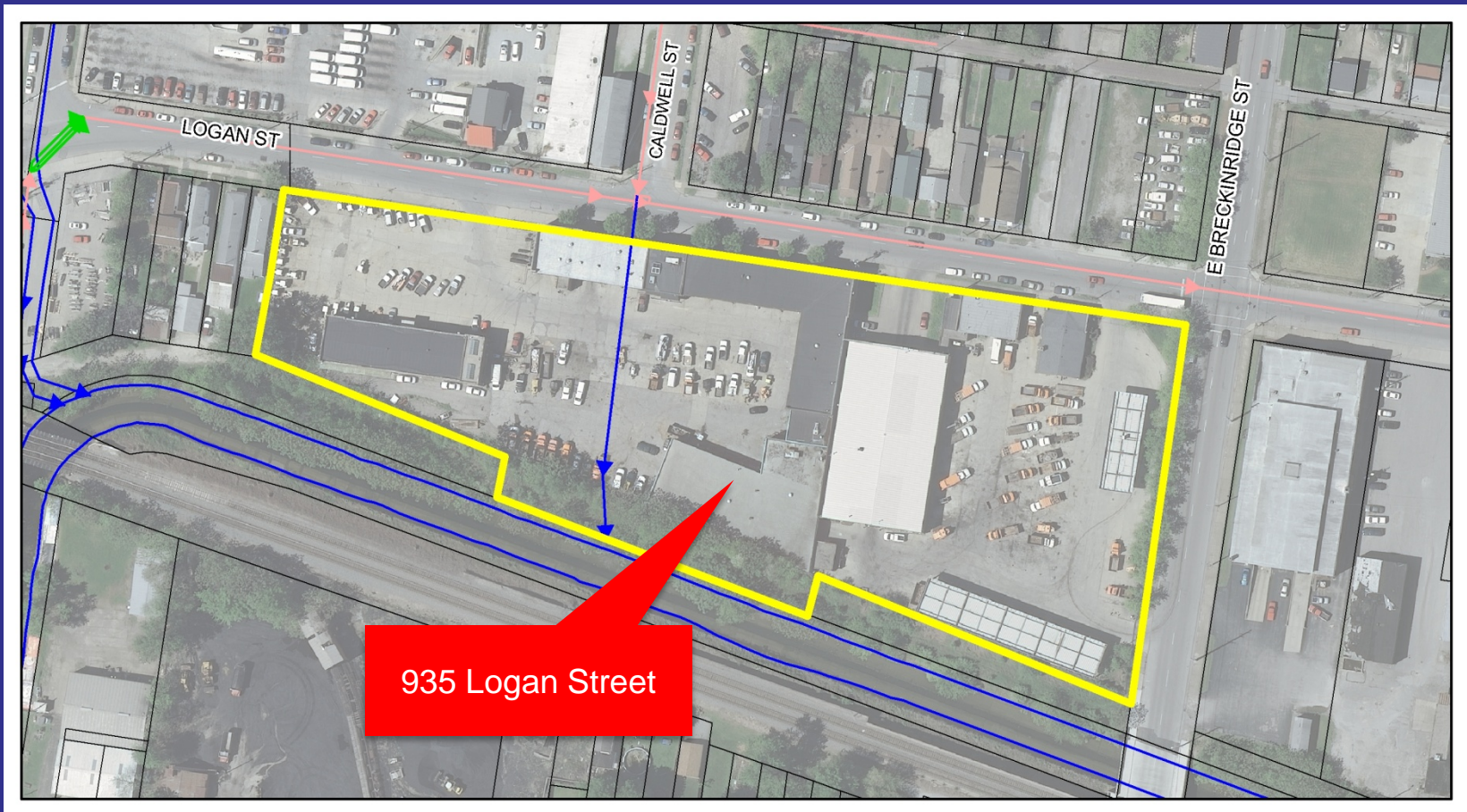
Logan CSO Storage Basin & Interceptor Project Schedule – Basin

- Planning Complete
- Preliminary Design Complete
- Final Design July 2014
- Advertise Construction August 2014
- Construction Start October 2014
- Consent Decree Deadline Dec. 31, 2017

Logan CSO Storage Basin & Interceptor Project Information – Interceptor Alignment



Logan CSO Storage Basin & Interceptor Project Information – Basin Site



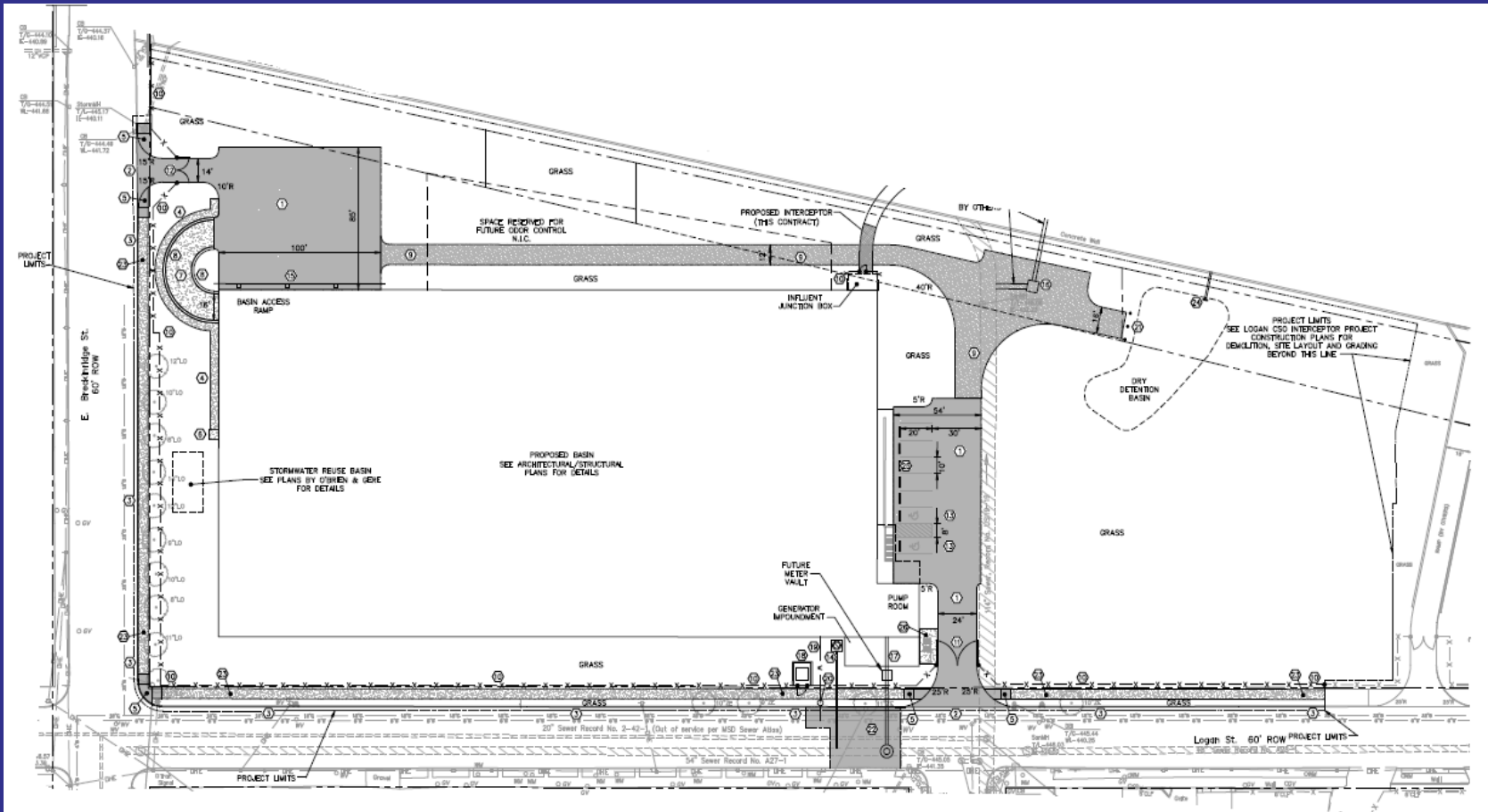
Logan CSO Storage Basin & Interceptor Project Information – Basin Rendering



Logan CSO Storage Basin & Interceptor Project Information – Basin Rendering



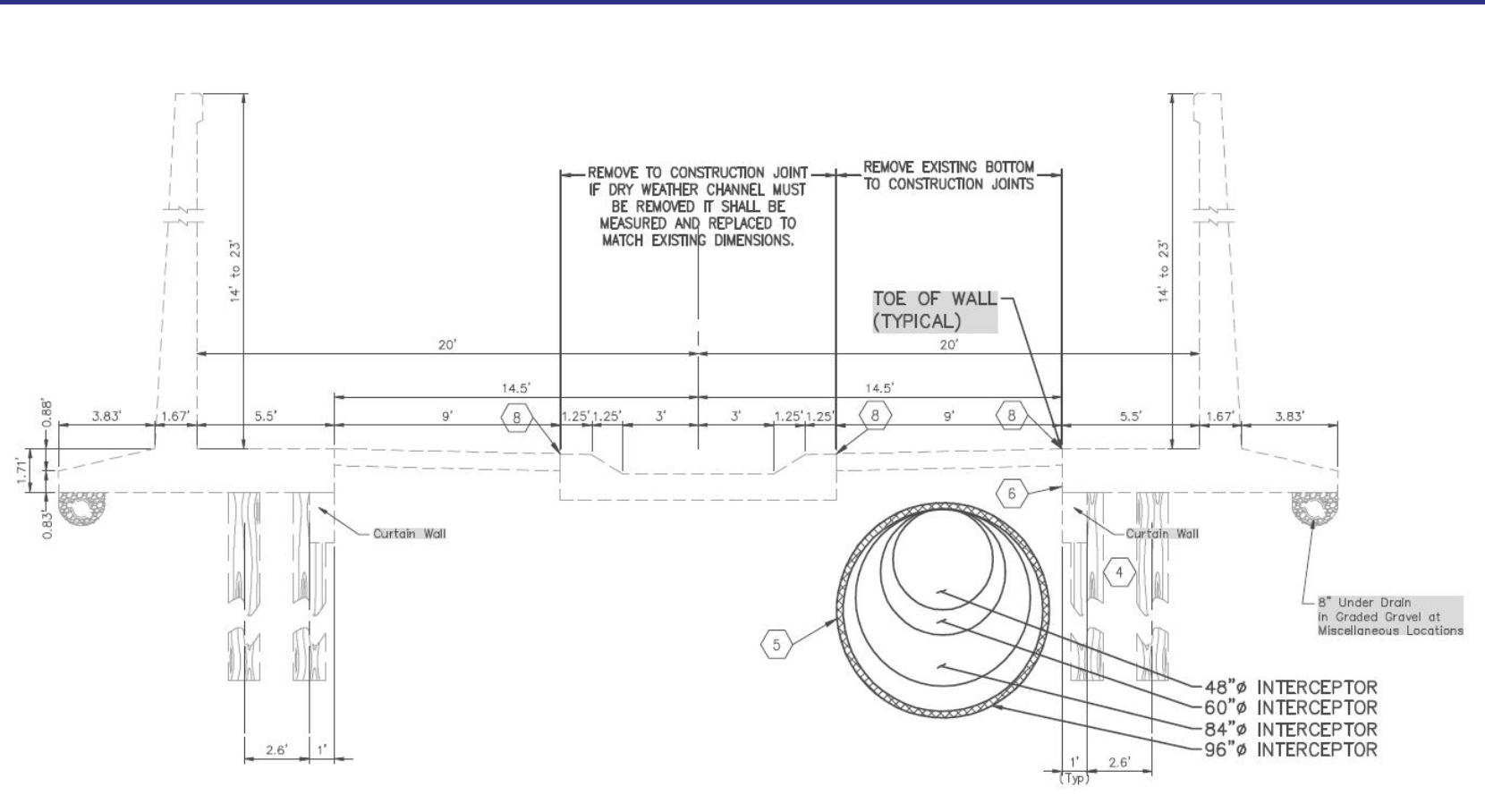
Logan CSO Storage Basin & Interceptor Project Information – 100% Basin Site Layout



Logan CSO Storage Basin & Interceptor Project Information – Existing Channel



Logan CSO Storage Basin & Interceptor Project Information – Interceptor Section



Logan CSO Storage Basin & Interceptor Project Benefits and Challenges

- Capture & treat sewage
 - Less untreated water to Beargrass Creek
- Construct these mandatory improvements in a way that is:
 - Affordable to the community
 - Respectful to the environment
- Result in an overall improvement to the surroundings